

Wild Earth Travel

Small Ships, Big Adventures

wildearth-travel.com

info@wildearth-travel.com

PANAMA, COLOMBIA & CARIBBEAN ISLANDS LUXURY CRUISE

Explore the breathtaking landscapes and vibrant culture of the Caribbean Sea. On the Panamanian and Colombian coastlines, lush mangroves and lively towns recount the colonial past of the region, featuring Congo ceremonies and sleepy ruins. Off the coast, the turquoise sea wraps itself around stunning archipelagos, such as the San Blas Islands, home to the Kuna community, or the Grenadines, like a confetti of islets bound together by the most beautiful coral reef in the West Indies. In these crystal-clear waters, the underwater life is mesmerising, as are the panoramas provided by the Pitons of Saint Lucia and the gentle Creole way of life pervading Les Saintes.



ITINERARY

Day 1 COLÓN

Colon is the second largest city in Panama, at the Caribbean entrance of the Panama Canal. Colon is today an important port, and the free trade zone created in 1953 contributed greatly to the development of the city. Colon was founded in 1850 by Americans working on the Panama railroad connecting the Atlantic and Pacific coasts through the isthmus of Panama; the city rapidly overshadowed the older Caribbean ports of Panama when the canal opened.

Day 2 PORTOBELLO

In the province of Colon, along the magnificent Caribbean coast of Panama, Portobelo is located not far from the famous canal. Given its name of

Wild Earth Travel

Small Ships, Big Adventures

0800 945 3327 (within New Zealand) | +64 (0) 3 365 1355 | **1800 107 715** (within Australia)

info@wildearth-travel.com | **wildearth-travel.com**



Wild Earth Travel

Small Ships, Big Adventures

wildearth-travel.com

info@wildearth-travel.com

"beautiful port" by Christopher Columbus, who discovered it in 1502, this charming and peaceful bay was one of the most important ports for the shipping of precious metals from the New World to Spain. Don't miss a visit to its fortifications, listed as a UNESCO World Heritage Site. The town has preserved the strong religious and cultural traditions of its colonial past, such as the veneration of the Black Christ and a strongly-rooted Afro-Caribbean culture. The Congo ceremonies retrace the story of Spanish domination over black slaves through traditional dances and music.

Day 3 SAN BLAS ISLANDS

Located on the north-east coast of Panama, the San Blas archipelago is a string of coral islands in the heart of the Caribbean Sea. More than 300 islands and cays cover an area of 300 square kilometres offering travellers a multitude of treasures. Sheltered behind a long coral reef, the San Blas Islands are full of enchanting anchorages. The long sandy white beaches bound by crystal-clear waters will allow you to relax and enjoy incredible marine fauna before engaging with the Kunas Indian community. Still subsisting on hunting and fishing, they will welcome you in their villages of bamboo houses gathered near the beaches.

Day 4 CARTAGENA

A splendid harbour city in the north of Columbia, a source of inspiration for the Columbian writer Gabriel Garcia Marquez, Cartagena will win you over with its well-preserved colonial architecture, and warm friendly atmosphere. You can visit the sumptuous UNESCO World Heritage fortified historical centre whose churches and houses have magnificent multi-coloured façades. A witness of Spanish domination, the San Felipe de Barajas fortress stands on top of a hill from where you can admire views over the whole city. The Las Bovedas neighbourhood will charm you with its arcades, used as prison cells during the 19th century civil wars.

Day 5 SANTA MARTA

Santa Marta, located in the north of the Caribbean coast of Colombia, is a seaside town dominated by the majestic Sierra Nevada. The highest coastal chain of mountains in the world, it is listed as a Biosphere Reserve by UNESCO for the diversity of its fauna and flora. At the heart of the first Spanish colony, you will discover the heritage of the Tairona, the largest indigenous civilisation

in Colombia. The eponymous national park offers you sumptuous landscapes, combining lush tropical forest and beautiful fine sandy beaches edged with crystal-clear water. The archaeological heritage and the Pre-Columbian treasures of the region are a source of endless enchantment.

Day 6 AT SEA

During your day at sea, make the most of the many services and activities on board. Treat yourself to a moment of relaxation in the spa or stay in shape in the fitness centre. Depending on the season, let yourself be tempted by the swimming pool or a spot of sunbathing. This day without a port of call will also be an opportunity to enjoy the conferences or shows proposed on board, to do some shopping in the boutique or to meet the PONANT photographers in their dedicated space. As for lovers of the open sea, they will be able to visit the ship's upper deck to admire the spectacle of the waves and perhaps be lucky enough to observe marine species. A truly enchanted interlude, combining comfort, rest and entertainment.

Day 7 BONAIRE

Surrounded by a barrier reef and a marine sanctuary, Bonaire is a true paradise for divers. This peaceful and preserved little island is renowned all over the world for its coral reefs, which are directly accessible from the beach, providing a unique sensation of freedom. Discover magnificent marine fauna and flora while snorkelling or diving in its turquoise waters. The Washington Slagbaai National Park in the north of the island is home to many birds. It is the most important breeding site in the south Caribbean for the pink flamingo, the island's emblematic animal.

Day 8 AT SEA

During your day at sea, make the most of the many services and activities on board. Treat yourself to a moment of relaxation in the spa or stay in shape in the fitness centre. Depending on the season, let yourself be tempted by the swimming pool or a spot of sunbathing. This day without a port of call will also be an opportunity to enjoy the conferences or shows proposed on board, to do some shopping in the boutique or to meet the PONANT photographers in their dedicated space. As for lovers of the open sea, they will be able to visit the ship's upper deck to admire the spectacle of the waves and perhaps be lucky enough to observe marine species. A truly enchanted interlude, combining

Wild Earth Travel

Small Ships, Big Adventures

0800 945 3327 (within New Zealand) | +64 (0) 3 365 1355 | **1800 107 715** (within Australia)

info@wildearth-travel.com | **wildearth-travel.com**



Wild Earth Travel

Small Ships, Big Adventures

wildearth-travel.com

info@wildearth-travel.com

comfort, rest and entertainment.

Day 9 MAYREAU ISLAND

Among the string of paradisiac islands with their sandy beaches that form the Saint Vincent and the Grenadines archipelago, Mayreau is the smallest. Its peaceful and idyllic atmosphere, far from the madding crowd, invites you to relax. On shore, enjoy a shaded and fully equipped beach from which to go snorkelling if you'd like to observe the colourful fish around the coral sitting at the foot of the rocks that stretch across the bay.

Day 10 UNION ISLAND

Deserted bays, long stretches of golden sand, turquoise waters and endless coral reefs - Union Island is without a doubt one of the most beautiful islands in the Caribbean. Overlooked by soaring peaks, this strange little strip of land owes its nickname of "the Tahiti of the West Indies" to its volcanic silhouette and its large swathes of greenery. When you call here, you will discover what the locals consider to be "the best-kept secret in the Grenadines" - Chatham Bay. Surrounded by hills and valleys carpeted in tropical rainforest, sheltering many sea turtles, this delightful half-moon of sand is, each day, the setting for the tireless ballet of the numerous pelicans who inhabit the island.

Day 11 PIGEON ISLAND BEACH & SOUFRIÈRE

Linked to St Lucia by a sand causeway, Pigeon Island has been a designated National Park since 1979. On this wild and pristine land, you will be inspired to take pleasant walks amid the tropical vegetation and through a magnificent tree-filled garden. You will also be irresistibly drawn to the two pretty little sandy beaches nestling on the southern side and bathed by crystal-clear waters. While snorkelling, be sure to explore the underwater world that is teeming with life, along the rocks lining this peninsula's coast. You will thoroughly enjoy the calm and beauty of this place, which is really conducive to simply relaxing. Nestled in the crook of a breath-taking bay, the former capital of St Lucia is brimming with attractions. Soufriere is famous for The Pitons, volcanic spires that tower over the entrance to the town. In the vicinity of the lush botanical gardens, you will be able to enjoy the curative powers of the Diamond Falls mineral baths. From the beach at the north end of the bay, you can set off to explore the reefs that are home to stunning gardens of sea fans at the foot of the cliffs that plunge into the sea.

Day 12 LES SAINTES

During the feast of All Saints in 1493, Christopher Columbus discovered this archipelago of nine islands that he named "The Saints". Today, only two of them are inhabited. Terre de Haut, in the east, is dominated by the Morne Mire hill; at the summit stands Fort Napoleon, paying homage to the islands' history. In the heart of the botanical garden, shared by iguanas and cacti, there is an exceptional view of the Baie des Saintes, one of the most beautiful in the world. The long shady beach of Pompierre, where it is forbidden to drop anchor, is a peaceful place for a swim, while Pain de Sucre Beach offers wonderful opportunities for snorkelling. On the island, don't forget to taste the local speciality, the "tourment d'amour", a cake made with coconut.

Day 13 FORT-DE-FRANCE

Located on the western coast of Martinique, Fort-de-France will amaze you by the splendour of its bay, a magnificent cut-out in the coastline, considered as one of the most beautiful in the world. At the harbour mouth, on its strip of land, fort Saint-Louis overlooks the capital city of Martinique. If you climb up to it, you can see some breath-taking views. Saint Louis Cathedral and the Schoelcher library bear witness to a secular history, intimately linked to the island's story. Why not try some fresh coconut at the colourful Grand Marche. Two really pleasant places you can take a breather in, right in the heart of the city, are the garden of Balata and the Aime Cesaire park.

Please Note:

Itineraries are subject to change.



Wild Earth Travel

Small Ships, Big Adventures

wildearth-travel.com

info@wildearth-travel.com

YOUR SHIP: LE BELLOT

YOUR SHIP:	Le Bellot
VESSEL TYPE:	Luxury Expedition / Cruise Ship
LENGTH:	131 metres
PASSENGER CAPACITY:	184
BUILT/REFURBISHED:	2019-2020

Featuring innovative and environmentally-friendly equipment, elegantly designed staterooms, spacious suites with large windows, and lounge areas that open onto the outside, this new limited-capacity yacht boasting just 92 staterooms and suites will offer you a truly unique cruising experience.

As the first ship in a new series that remains true to the Ponant spirit, Le Bellot will embody the unique atmosphere that is the cruise line's hallmark: a subtle blend of refinement, intimacy and comfort.

Aboard this ship that flies the French flag, you will experience the incomparable pleasure of an intimate cruise, with the possibility of exploring an ever-increasing range of destinations in an ethnic-chic ambiance with luxury service.

Experience a luxurious setting where the accent is on authenticity and passion for travel.

RESTAURANTS

As it is an essential part of French culture, gastronomy will naturally have pride of place aboard this new ship.

To the back of Deck 4, you will find a 260 m² panoramic restaurant which can accommodate all of our passengers in a single sitting. Designed differently to that on our other ships, this

dining area, which opens onto the outside, will have a buffet of salads, desserts and cheeses at your disposal. Our discreet and attentive crew will provide table service for hot meals.

In a relaxed atmosphere, an outdoor grill on Deck 3 will serve grilled meats with a variety of salads and desserts.

PUBLIC AREAS

Le Bellot has many common areas that are designed and equipped to meet all of your needs while preserving the intimacy of each passenger.

A 140 m² reception area includes:

A reception/concierge desk,

An excursions desk,

The ship's administrative services,

The sales office, manned by our Guest Relations Officer,

Our 50 m² boutique which sells clothing, jewellery, beauty products, postcards and various accessories,

Toilets accessible to passengers with reduced mobility.

A new hydraulic platform with adjustable height provides:

Easier boarding than on any other cruise ship,

Easier Zodiac embarkation and disembarkation for expeditions,

Easier access to the sea for swimming and practising various water sports such as kayaking or paddle-boarding.

A pool deck offering:

A pool with a panoramic view, equipped with a counter-current swimming system,

A pleasant solarium,

An outdoor bar and lounge with armchairs and sofas.

A 200 m² main lounge which can accommodate all of our passengers to share convivial moments and to host activities

Wild Earth Travel

Small Ships, Big Adventures

0800 945 3327 (within New Zealand) | +64 (0) 3 365 1355 | **1800 107 715** (within Australia)

info@wildearth-travel.com | **wildearth-travel.com**



Wild Earth Travel

Small Ships, Big Adventures

wildearth-travel.com

info@wildearth-travel.com

organised during the day or evening.

Lastly, a theatre that seats 188, equipped with:

The latest sound and lighting technology,

A LED wall as the stage backdrop, for the projection of high-resolution images and videos.



and videos.



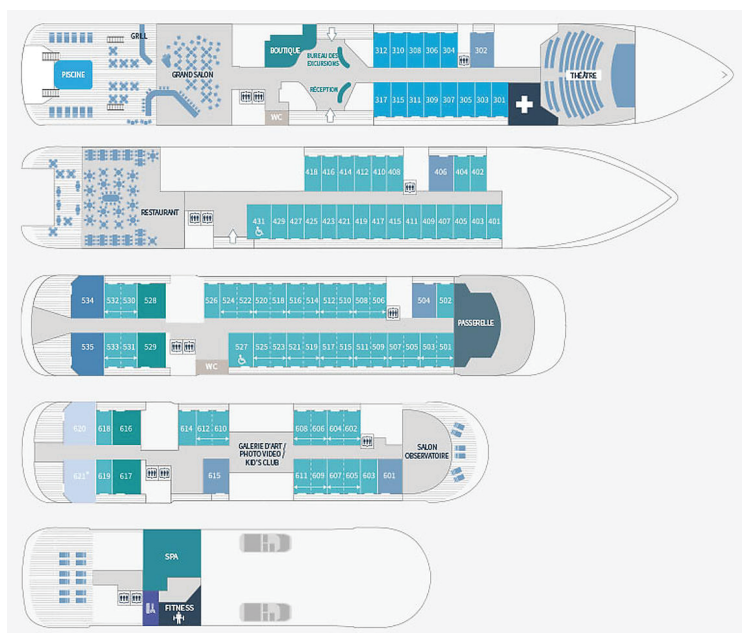
Wild Earth Travel

Small Ships, Big Adventures

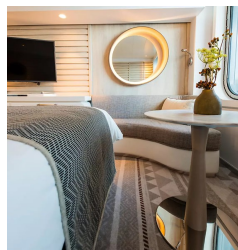
0800 945 3327 (within New Zealand) | +64 (0) 3 365 1355 | **1800 107 715** (within Australia)

info@wildearth-travel.com | **wildearth-travel.com**

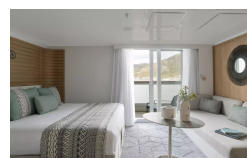
INSIDE YOUR SHIP



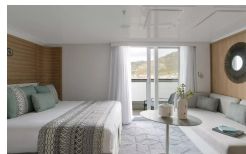
Deluxe Stateroom



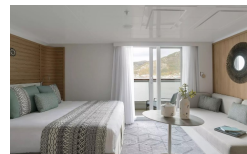
Deluxe Suite



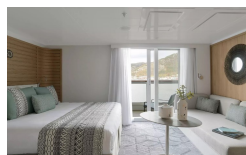
Deluxe Suite Deck 3



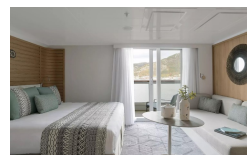
Deluxe Suite Deck 4



Deluxe Suite Deck 5



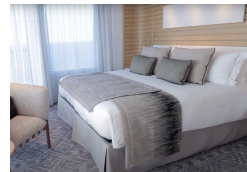
Deluxe Suite Deck 6



Grand Deluxe Suite



Grand Deluxe Suite Deck 5



Wild Earth Travel

Small Ships, Big Adventures

wildearth-travel.com

info@wildearth-travel.com

PRICING

07-Dec-2025 to 19-Dec-2025

Deluxe Stateroom	9750 AUD pp
Prestige Deck 4	10820 AUD pp
Prestige Deck 5	11350 AUD pp
Prestige Deck 6	12000 AUD pp
Deluxe Suite Deck 6	15620 AUD pp
Deluxe Suite Deck 3	15620 AUD pp
Deluxe Suite Deck 4	15620 AUD pp
Deluxe Suite Deck 5	15620 AUD pp
Prestige Deck 5 Suite	18810 AUD pp
Prestige Deck 6 Suite	19670 AUD pp
Privilege Suite Deck 6	20300 AUD pp
Privilege Suite Deck 5	20300 AUD pp
Grand Deluxe Suite Deck 5	20950 AUD pp
Grand Deluxe Suite Deck 6	20950 AUD pp

Deluxe Stateroom	10340 AUD pp
Prestige Deck 4	11490 AUD pp
Prestige Deck 5	12050 AUD pp
Prestige Deck 6	12740 AUD pp
Deluxe Suite Deck 3	16610 AUD pp
Deluxe Suite Deck 6	16610 AUD pp
Deluxe Suite Deck 4	16610 AUD pp
Deluxe Suite Deck 5	16610 AUD pp
Prestige Deck 5 Suite	20010 AUD pp
Prestige Deck 6 Suite	20920 AUD pp
Privilege Suite Deck 5	21600 AUD pp
Privilege Suite Deck 6	21600 AUD pp
Grand Deluxe Suite Deck 6	22290 AUD pp
Grand Deluxe Suite Deck 5	22290 AUD pp

16-Jan-2026 to 28-Jan-2026

Wild Earth Travel

Small Ships, Big Adventures

wildearth-travel.com

info@wildearth-travel.com

PRICING

25-Mar-2026 to 06-Apr-2026

Deluxe Stateroom	10950 AUD pp
Prestige Stateroom Deck 4	12150 AUD pp
Prestige Stateroom Deck 5	12760 AUD pp
Prestige Stateroom Deck 6	13480 AUD pp
Deluxe Suite	17590 AUD pp
Deluxe Suite Deck 4	17590 AUD pp
Deluxe Suite Deck 5	17590 AUD pp
Deluxe Suite Deck 6	17590 AUD pp
Prestige Suite Deck 5	21220 AUD pp
Prestige Suite Deck 6	22190 AUD pp
Privilege Suite	22900 AUD pp
Privilege Suite Deck 6	22900 AUD pp
Grand Deluxe Suite	23620 AUD pp
Grand Deluxe Suite Deck 6	23620 AUD pp
Owner's Suite	27620 AUD pp

07-Dec-2026 to 19-Dec-2026

Deluxe Stateroom	10240 AUD pp
Prestige Deck 4	11360 AUD pp
Prestige Deck 5	11900 AUD pp
Prestige Deck 6	12580 AUD pp
Deluxe Suite Deck 3	16360 AUD pp
Deluxe Suite Deck 4	16360 AUD pp
Deluxe Suite Deck 5	16360 AUD pp
Deluxe Suite Deck 6	16360 AUD pp
Prestige Deck 5 Suite	19700 AUD pp
Prestige Deck 6 Suite	20600 AUD pp
Privilege Suite Deck 5	21270 AUD pp
Privilege Suite Deck 6	21270 AUD pp
Grand Deluxe Suite Deck 6	21930 AUD pp
Grand Deluxe Suite Deck 5	21930 AUD pp

Wild Earth Travel

Small Ships, Big Adventures

0800 945 3327 (within New Zealand) | +64 (0) 3 365 1355 | **1800 107 715** (within Australia)

info@wildearth-travel.com | wildearth-travel.com



Wild Earth Travel

Small Ships, Big Adventures

wildearth-travel.com

info@wildearth-travel.com

PRICING

12-Mar-2027 to 22-Mar-2027

Deluxe Stateroom	8160 AUD pp
Prestige Deck 4	9040 AUD pp
Prestige Deck 5	9490 AUD pp
Prestige Deck 6	10020 AUD pp
Deluxe Suite Deck 6	13030 AUD pp
Deluxe Suite Deck 4	13030 AUD pp
Deluxe Suite Deck 5	13030 AUD pp
Deluxe Suite Deck 3	13030 AUD pp
Prestige Deck 5 Suite	15700 AUD pp
Prestige Deck 6 Suite	16400 AUD pp
Privilege Suite Deck 5	16940 AUD pp
Privilege Suite Deck 6	16940 AUD pp
Grand Deluxe Suite Deck 6	17470 AUD pp
Grand Deluxe Suite Deck 5	17470 AUD pp

Deluxe Stateroom	10430 AUD pp
Prestige Deck 4	11570 AUD pp
Prestige Deck 5	12140 AUD pp
Prestige Deck 6	12830 AUD pp
Deluxe Suite Deck 3	16700 AUD pp
Deluxe Suite Deck 5	16700 AUD pp
Deluxe Suite Deck 6	16700 AUD pp
Deluxe Suite Deck 4	16700 AUD pp
Prestige Deck 5 Suite	20120 AUD pp
Prestige Deck 6 Suite	21030 AUD pp
Privilege Suite Deck 5	21720 AUD pp
Privilege Suite Deck 6	21720 AUD pp
Grand Deluxe Suite Deck 6	22400 AUD pp
Grand Deluxe Suite Deck 5	22400 AUD pp

29-Mar-2027 to 10-Apr-2027



Wild Earth Travel
Small Ships, Big Adventures

0800 945 3327 (within New Zealand) | +64 (0) 3 365 1355 | **1800 107 715** (within Australia)

info@wildearth-travel.com | wildearth-travel.com



Wild Earth Travel

Small Ships, Big Adventures



wildearth-travel.com

info@wildearth-travel.com

SPECIAL OFFERS

Online prices reflect the current brochure fare savings of up to 30%. Prices may change based on demand. Terms and conditions apply. This special offer is subject to availability. Please contact us for more details.



Wild Earth Travel

Small Ships, Big Adventures

0800 945 3327 (within New Zealand) | +64 (0) 3 365 1355 | **1800 107 715** (within Australia)

info@wildearth-travel.com | **wildearth-travel.com**