



OUT OF THE NORTHWEST PASSAGE (WEST TO EAST)

The Northwest Passage is one of the world's greatest voyages. Our fleet of Zodiacs guarantees excitement with every excursion.

The Arctic is calling. Pristine fjords. Looming glaciers. Jagged icebergs. Grand vistas, historic sites, graves, and abandoned outposts. Marine mammals, bears and birds... wonders await.

You will find a warm welcome in Nunavut's communities, and Greenland offers geology, geography, and culture with a European flair.

Every day is a new adventure when sailing the Northwest Passage; hiking, photography, birding. Exploring archaeology and spotting bears.

Visiting villages perched on mighty mountains. Learning with our experts. Meeting the people who call the Arctic home. And sailing the passage at the top of the world!

Please note: your voyage rates do not include commercial and charter flight costs.



ight costs.

ITINERARY

Day 1: Kugluktuk (Coppermine) *

Located at the mouth of the Coppermine River, Kugluktuk is the westernmost community in Nunavut. Known for many years as Coppermine, the community reverted to its original Inuinnaqtun name--meaning "place of moving waters"--on January 1st, 1996. Our charter flight will land in Kugluktuk and we will embark Ocean Endeavour by Zodiac. Iqaluktuuttiaq (Cambridge Bay), NU is an alternate embarkation point, and may be used based on sea, ice and weather conditions.



Wild Earth Travel

Small Ships, Big Adventures

wildearth-travel.com

info@wildearth-travel.com

Days 2 - 4: Kitikmeot Region *

The Kitikmeot Region consists of parts of Victoria Island, the adjacent part of the mainland as far as the Boothia Peninsula, King William Island, and the southern portion of Prince of Wales Island. Recently, the Kitikmeot Region has been in the news since the finding of the lost ships of the Franklin Expedition in its waters. It is Nunavut's least-populated region, though wildlife abounds here both in the sea and on land. We'll explore by Zodiac and on foot.

Day 5: Prince Regent Inlet *

This passage marks an area rich in marine and avian life. Thick-billed murres, ivory gulls, beluga, narwhal, and bowhead whales reside in the ice-strewn waters. In addition to abundant wildlife, we'll delve deeper into the exploration of the Northwest Passage and mercantile efforts of the Hudson's Bay Company.

Day 6: Beechey Island *

In 1845, Sir John Franklin set out from England with HMS Erebus and HMS Terror, attempting to sail through the Northwest Passage. His crew overwintered at Beechey Island where three of his men died. Numerous search parties later used Beechey as a depot and rendezvous. Amundsen, Bernier, and Larsen visited Beechey. Thomas Morgan of HMS Investigator was buried there in 1854 alongside Franklin's men. The graves and the ruins of Northumberland House are a haunting memorial.

Days 7 - 8: Tallurutiup Imanga (Lancaster Sound) *

We will spend two days exploring Tallurutiup Imanga (Lancaster Sound), one of Canada's newest National Marine Conservation Areas. Large populations of marine mammals, including narwhal, beluga, and bowhead whales, transit and feed in this area. There is a great selection of landing sites available to choose from, depending on weather, wildlife, and sea conditions.

Day 9: Ajuittuq (Grise Fjord) *

Ajuittuq means "place that never thaws". 1,150 kilometres above the Arctic Circle, Canada's northernmost "civilian" community originated in the Cold War; in 1953, Inuit were relocated to Ajuittuq to boost Canadian sovereignty. We'll be welcomed into the hamlet, where we will have a chance to meet members of the community, learn about their way of life, and hear their poignant stories.

Days 10 - 11: Smith Sound *

Smith Sound, an ancient Inuit travel route, divides Ellesmere Island from Greenland, and served as the main route for explorers and adventurers searching for the North Pole. Adolphus Greely, Sir George Nares, and Elisha Kent Kane all travelled these waters with varying degrees of success.

Day 12: At Sea *

On this exploration day, we'll be making the most of what the wind, weather and wildlife have to offer. Our expedition staff will scan for polar bears, walrus, whales, seals, and seabirds as we go.

Days 13-14: Northwest Greenland *

We will explore stunning fjords that line the coast. Glaciers and icebergs abound here. In true expedition style, we will seek opportunities to hike, explore, and view wildlife as conditions allow.

Day 15: Ilulissat *

Ilulissat translates literally into "iceberg", an apt name for this site at the mouth of the Ilulissat Icefjord--a UNESCO World Heritage Site. The icefjord is the outlet of the Sermeq Kujalleq Glacier, source of many of the icebergs in the North Atlantic. Here, we will cruise in Zodiacs to appreciate the icebergs. And we'll visit the bustling town of Ilulissat, with its museums, cafes, craft shops, and busy fishing harbour.

Day 16: Itilleq Fjord *

Wild Earth Travel
Small Ships, Big Adventures

0800 945 3327 (within New Zealand) | +64 (0) 3 365 1355 | **1800 107 715** (within Australia)

info@wildearth-travel.com | **wildearth-travel.com**



Wild Earth Travel

Small Ships, Big Adventures

wildearth-travel.com

info@wildearth-travel.com

The west Greenland coastline is a rich mixture of islands and complex coastal waterways. As we enter the Arctic autumn, the tundra foliage will be in gorgeous colour. We will be making an expedition stop here to explore the landscape of wild Greenland.

Day 17: Kangerlussuaq, Greenland *

Søndre Strømfjord is one of the longest fjords in the world and boasts 168 kilometres of superb scenery. We end our adventure by sailing up this dramatic fjord. Kangerlussuaq, the town at its eastern head, is a former US Air Force base and Greenland's primary flight hub. Here we will disembark the Ocean Endeavour for our return charter flight to Toronto, ON.

Please Note: *

The itineraries/programs described are subject to change at the discretion of the ship's master.

Wild Earth Travel
Small Ships, Big Adventures

0800 945 3327 (within New Zealand) | +64 (0) 3 365 1355 | **1800 107 715** (within Australia)

info@wildearth-travel.com | **wildearth-travel.com**



YOUR SHIP: EXPLORIS ONE

YOUR SHIP:	Exploris One
VESSEL TYPE:	Expedition Cruise
LENGTH:	108 metres / 354 feet
PASSENGER CAPACITY:	144
BUILT/REFURBISHED:	1989/2018/2023

Capacity for 144 passengers

Purpose-built for expedition travel

Design combines bold exploration with relaxed comfort and elegance

Well-suited for polar, temperate, and tropical environments

Life on Board

Food and Drink

Aboard the Exploris One, dining is an adventure! Top chefs craft dishes blending local flavours with international favourites, served in cozy open-seating spaces--indoors or al fresco. Start your day with hearty breakfasts and lunches to fuel your explorations. At dinner, savour globally inspired a la carte meals catering to seafood lovers, vegetarians, and everyone in between--don't forget the freshly made desserts! Dietary needs? Our team's got you covered with advance notice. With 24/7 beverages, from specialty coffee to fine wine, from beer to cocktails, every bite and sip celebrates your journey. Bon appetit!

Life on Board

Wake up aboard the Exploris One, where breathtaking ocean views from your cabin spark your inner poet. This intimate ship,

with space for 144 adventurers is designed to take you to the planet's most remote corners in style. Blending cozy comforts with epic exploration, it's perfect for you thrill-seekers that don't want to leave your barista behind. Learn from our expert expedition team, known for their deep knowledge and quirky charm. Spot seabirds from panoramic decks, enjoy inspiring talks, hands-on workshops, live music, or simply unwind in the ship's welcoming spaces.

From Ship to Shore

Heading ashore on the Exploris One is part of the adventure! With a fleet of trusty Zodiacs, you'll easily reach remote beaches, wildlife hotspots, and stunning coastlines. Designed for exploration, these versatile crafts get you right into the action. Our expert team ensures smooth, safe transfers, so you can focus on the thrill of discovery. Whether stepping onto untouched shores or cruising past playful seals, the journey is as exciting as the destination. On the Exploris One, every shore excursion is an adventure waiting to unfold!

Facilities

The Explorer's Table - Grand Restaurant

Enjoy exceptional dining in a spacious setting where gourmet meals and regional specialties are served with care and creativity.

The Outside Grill

Savour fresh-grilled favourites while taking in stunning views and the invigorating sea breeze on this open-air deck dining space.

Learning Lounge

Engage with experts and fellow travellers in this comfortable venue designed for insightful presentations and enriching talks.

Wild Earth Travel

Small Ships, Big Adventures

wildearth-travel.com

info@wildearth-travel.com

Main Lounge

Relax and socialize in this welcoming hub, perfect for unwinding, sharing stories, or enjoying evening entertainment.

Observation Lounge

Take in sweeping views and quiet contemplation in this serene space.

Fitness Centre

Stay active in the fully equipped fitness area, featuring modern equipment and ample space to maintain your workout routine while at sea.

Sauna

Recharge and unwind in the soothing warmth of our on-board sauna, perfect after a day of exploration.

Massage Room

Massages offered to provide relaxation and comfort, with appointments available throughout each journey.

Two Outdoor Jacuzzis

Soak in warm, bubbling waters while enjoying expansive views and refreshing ocean breezes.

Gift Shop

Browse a selection of unique items and essentials, perfect for souvenirs or travel needs.

Additional Facilities

Panoramic bridge

Bridge deck

Elevators to all decks

Steam Room

Complimentary launderette

Reception

Ready room

Medical centre



ical centre

Wild Earth Travel

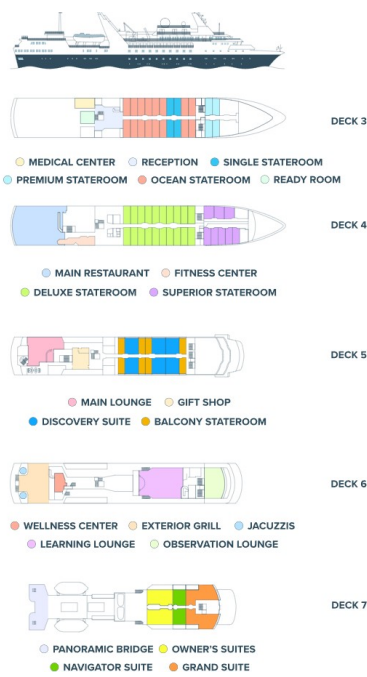
Small Ships, Big Adventures

0800 945 3327 (within New Zealand) | +64 (0) 3 365 1355 | **1800 107 715** (within Australia)

info@wildearth-travel.com | **wildearth-travel.com**



INSIDE YOUR SHIP



Cabin Category 1



Cabin Category 10



Cabin Category 2



Cabin Category 3



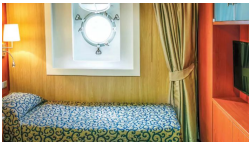
Cabin Category 4



Cabin Category 5



Cabin Category 6



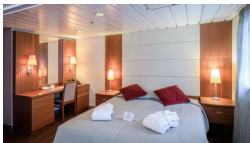
Cabin Category 7



Cabin Category 8



Cabin Category 9





Wild Earth Travel

Small Ships, Big Adventures

wildearth-travel.com

info@wildearth-travel.com

PRICING

01-Sep-2025 to 17-Sep-2025

Cabin Category 1	14495 USD pp
Cabin Category 2	16495 USD pp
Cabin Category 3	18495 USD pp
Cabin Category 4	19995 USD pp
Cabin Category 5	21495 USD pp
Cabin Category 6	22995 USD pp
Cabin Category 7	24495 USD pp
Cabin Category 8	25995 USD pp
Cabin Category 9	27495 USD pp
Cabin Category 10	28995 USD pp

Northbound Charter Flight. From 1100 USD

Northbound Charter Flight: Yellowknife, NT, Canada to Kugluktuk (Coppermine), NU, Canada. Early-morning departure.

Southbound Charter Flight. From 1595 USD

Southbound Charter Flight: Kangerlussuaq, Greenland to Toronto, ON, Canada. Evening arrival.

11-Sep-2026 to 27-Sep-2026

Cabin Category 1	23995 USD pp
Cabin Category 2	24695 USD pp
Cabin Category 3	25395 USD pp
Cabin Category 4	26695 USD pp
Cabin Category 5	28145 USD pp
Cabin Category 6	30295 USD pp
Cabin Category 7	30995 USD pp
Cabin Category 8	33145 USD pp
Cabin Category A	34195 USD pp
Cabin Category 9	35695 USD pp

Optional extras & upgrades

Wild Earth Travel
Small Ships, Big Adventures

0800 945 3327 (within New Zealand) | +64 (0) 3 365 1355 | 1800 107 715 (within Australia)

info@wildearth-travel.com | wildearth-travel.com