

Wild Earth Travel

Small Ships, Big Adventures

wildearth-travel.com

info@wildearth-travel.com

BREATHTAKING NORTHERN CROATIA LUXURY CRUISE, OPATIJA TO SPLIT

A breathtaking cruise from Opatija to Split along the stunning and less visited North Adriatic coastline and islands. The intermingling of various influences in the past has crystallized Croatia's spectacular scenery with small coves where bathers drift on the crystal-blue waters as well as historical towns and cities. You will cruise in the mornings, with a swim stop somewhere en route in a secluded bay, and, after lunch on board, you will arrive at your destination for the evening, and what destinations they are. Split is a great destination in itself, and preferred by many to Dubrovnik. Kornati and Brijuni National Parks further north provide a slower pace, but buzzing Zadar and Opatija give a true Croatian flavour.



ITINERARY

Day 1 OPATIJA - CRES (L) *

Check-in from 12.00h, meet the crew and enjoy a welcome cocktail, followed by departure at 13:00 with lunch onboard towards Cres, an unspoiled island, long and narrow abundant with olive groves, vineyards, forests of oak, beech and remarkable stone walls. Swim stop in one of the many astonishing pebble beaches Cres has to offer. Take a walk along the port of Cres - a typical medieval town with hidden squares and courtyards. Overnight in Cres.

Day 2 CRES - NP BRIJUNI / PULA (B, L) *

Wild Earth Travel

Small Ships, Big Adventures

0800 945 3327 (within New Zealand) | +64 (0) 3 365 1355 | **1800 107 715** (within Australia)

info@wildearth-travel.com | **wildearth-travel.com**

Wild Earth Travel

Small Ships, Big Adventures

wildearth-travel.com

info@wildearth-travel.com

While enjoying breakfast on board, cruise towards the National Park Brijuni, which consists of 14 islands and islets, among which the biggest is Veliki Brijun. Except for its beautiful nature, the archipelago has numerous dinosaur footprints. Explore this oasis of magnificent harmony between man, animal and plant life. After lunch on board, the cruise continues towards Pula. Upon arrival, time at leisure to explore the city that has existed for three thousand years. Settled in the prehistoric era and valued for its strategic location, Pula has been occupied, destroyed and rebuilt numerous times. The Arena in Pula is the only remaining Roman amphitheatre to have four side towers entirely preserved. Overnight in Pula.

Day 3 PULA - MALI LOŠINJ (B, L) *

Morning departure towards Lošinj, known as the "sunshine island" with an abundance of pines, wildflowers and herbs. Lošinj is one of the most popular islands on the northern Adriatic because of its hidden coves and cool Mediterranean vibe. Upon arrival, visit the Museum of Apoxyomenos, dedicated to the ancient bronze statue of an athlete found in the sea near the island. Time at leisure to explore this fragrant island: walk up to the Lošinj Aromatic Garden or to the smaller town of Veli Lošinj. Overnight in Mali Lošinj.

Day 4 MALI LOŠINJ - ZADAR (B, L) *

Morning cruise towards Zadar, for centuries the capital of Dalmatia and the oldest university town in Croatia. Join a guided tour of the city. Zadar is well known for its rich historical heritage of world importance, visible at every step: the Roman Forum from the 1st century, St Donat church from the 9th century - the most famous medieval basilica and the symbol of the city, mighty city walls with a bow and a representative City Gate from the 16th century, the Museum of ancient glass, over 30 churches in the old town, many palaces and villas, as well as the famous, contemporary Sea Organs and "Greeting to the Sun" light installation. Overnight in the port of Zadar.

Day 5 ZADAR - NP KORNATI / PRIMOŠTEN (B, L, CD) *

Early morning departure to the Kornati National Park, which consists of around 100 islands, islets and reefs. In addition to this, the continental part includes ¼ of the surface of the park, while the rest belongs to the marine ecosystem.

Enjoy the ruins of the ancient Illyrian fortress, Roman villas, old Christian church of St Mary and medieval fortresses and settlements. Some of the reefs are sometimes up to 100 m deep in the sea. Lunch on board as the cruise continues towards Primošten, a small, picturesque town situated between Šibenik and Trogir, in the central part of the Adriatic coast and surrounded by seven other islets, a wonderful sight and a beautiful place to explore. Captain's dinner with live entertainment onboard tonight. Overnight in Primošten.

Day 6 PRIMOŠTEN - STARI GRAD (B, L, D) *

After breakfast, set sail for Hvar, an island covered in vibrant and fragrant lavender fields and olive groves. Stop for swimming and lunch in one of many secluded bays. Upon arrival at Stari Grad, join a guided tour to explore this unique town. The famous Stari Grad Field is the oldest in Croatia and the best-preserved example of an ancient Greek system of agriculture. Together with the old town, it is a part of world heritage protected by UNESCO. A heritage dinner with transfer in the evening. Overnight in the port of Stari Grad.

Day 7 STARI GRAD - BOL / SPLIT (B, L) *

After breakfast, departure towards the island Bra, to visit the most famous Croatian beach, Zlatni Rat (Golden Horn) - a beautiful, horn-shaped sandy beach that constantly changes shape due to wind, current and waves. After lunch, as the cruise continues towards Split, enjoy the unbelievable views of the surrounding seas and the amazing Split Riviera. Upon arrival in the early afternoon, join the guided city tour. A dynamic port city with a medieval Old Town grown out of the 1,700-year-old Diocletian Palace, Split bustles with modern life amid its ancient Roman setting. Cafes, restaurants, and galleries cram the cobblestone alleyways, the waterfront and the Marjan peninsula, making Croatia's second-largest city one of the Mediterranean's most compelling. Return to the vessel and overnight in Split.

Day 8 SPLIT (B) *

A tasty breakfast before bidding farewell to the crew. Check-out and transfer to the airport. Legend: B - breakfast, L - lunch, D - dinner, T - tasting, CD - Captain's dinner

Wild Earth Travel

Small Ships, Big Adventures

0800 945 3327 (within New Zealand) | +64 (0) 3 365 1355 | **1800 107 715** (within Australia)

info@wildearth-travel.com | **wildearth-travel.com**

Wild Earth Travel

Small Ships, Big Adventures

wildearth-travel.com

info@wildearth-travel.com

YOUR SHIP: AQUAMARIN

YOUR SHIP:

Aquamarin

VESSEL TYPE:

LENGTH:

PASSENGER CAPACITY:

BUILT/REFURBISHED:



Sq. metres.

MV Aquamarin is a luxury vessel that was launched in 2017. She has 19 double and twin cabins that can accommodate 38 passengers. She has 8 lower deck cabins and 11 main deck cabins, all with en-suite shower and W/C, and air conditioning, wardrobe, safe, TV (no one ever watches!), hairdryer, table and chair.

Aquamarin is 43 metres long and 8.5 metres wide, and was built specifically for cruising the Croatian Islands. She has a large sun deck, spacious dining room and lounge and a swimming platform at the rear.

Features

Swimming platform for easy access

Exceptional personal service from the crew

Spacious air-conditioned dining room and bar area

Enticing jacuzzi on the top deck with sun loungers

Complimentary Wi-Fi is available throughout the vessel

Leisure equipment: Dinghy for up to 8 people, 36 sunbeds, snorkelling equipment, pool noodles, swimming rings

Lower deck cabins are the largest, measuring 15-16 sq. metres.

Main deck cabins are 14-15 sq. metres. Upper deck cabins measure around 13 Sq. metres.

Wild Earth Travel

Small Ships, Big Adventures

0800 945 3327 (within New Zealand) | +64 (0) 3 365 1355 | **1800 107 715** (within Australia)

info@wildearth-travel.com | **wildearth-travel.com**

Wild Earth Travel

Small Ships, Big Adventures

wildearth-travel.com

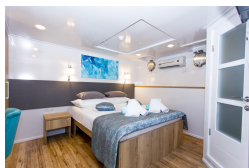
info@wildearth-travel.com

INSIDE YOUR SHIP

Lower deck cabin



Main/upper deck cabin



Wild Earth Travel

Small Ships, Big Adventures

0800 945 3327 (within New Zealand) | +64 (0) 3 365 1355 | **1800 107 715** (within Australia)

info@wildearth-travel.com | **wildearth-travel.com**



Wild Earth Travel

Small Ships, Big Adventures

wildearth-travel.com

info@wildearth-travel.com

PRICING

06-Jun-2026 to 13-Jun-2026

Lower deck cabin	2200 EUR pp
Main/upper deck cabin	2500 EUR pp

Wild Earth Travel

Small Ships, Big Adventures

0800 945 3327 (within New Zealand) | +64 (0) 3 365 1355 | **1800 107 715** (within Australia)

info@wildearth-travel.com | **wildearth-travel.com**