

Wild Earth Travel

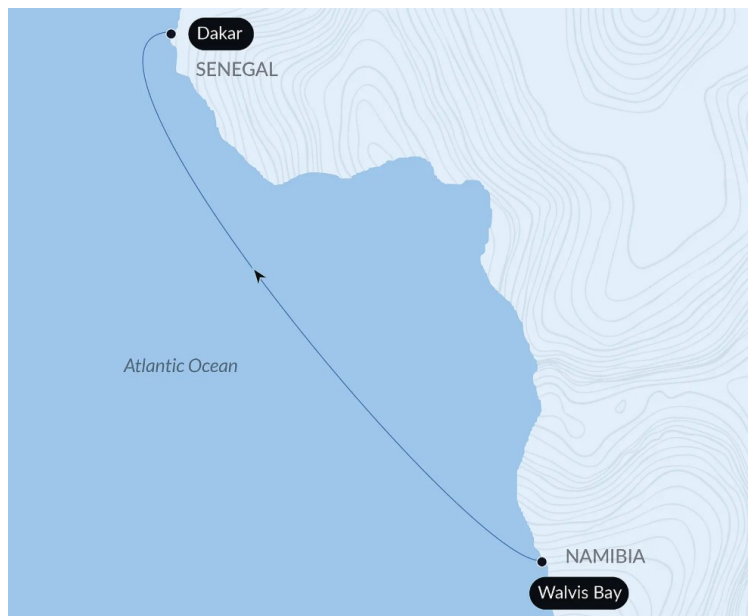
Small Ships, Big Adventures

wildearth-travel.com

info@wildearth-travel.com

OCEAN VOYAGE: FROM WALVIS BAY TO DAKAR IN LUXURY

From sea to sea, or from continent to continent, PONANT welcomes you aboard its ships for a Sea Journey. A few times a year we invite sea lovers, dreamers, and keen observers of endless horizons to join our non-stop journeys, to enjoy the comfort of our ships for an extended period and share the daily lives of our crew.



ITINERARY

Day 1 - Walvis Bay *

On the **wild coastlines of Namibia**, you will feel the force of the encounter between the infinite dunes of **the oldest desert in the world** and the tempestuous waves of the Atlantic Ocean. A natural port in the curve of a bay formed by an old river delta, **Walvis Bay** is protected from the whims of the ocean by the natural barrier of **Pelican Point**. It is a real refuge for migratory birds, where thousands of **pink** **flamingos** and Cape cormorants mix with one of the largest **Cape fur seal colonies** in the world. On the Namibian coastline, the seals make the most of the Benguela Current, cold and full of fish, which comes up from the Antarctic.

Days 2 - 12 At sea *

Wild Earth Travel

Small Ships, Big Adventures

0800 945 3327 (within New Zealand) | +64 (0) 3 365 1355 | **1800 107 715** (within Australia)

info@wildearth-travel.com | **wildearth-travel.com**



Wild Earth Travel

Small Ships, Big Adventures

wildearth-travel.com

info@wildearth-travel.com

During your journey at sea, make the most of the many services and activities on board. Treat yourself to a moment of relaxation in the spa or stay in shape in the fitness centre. Depending on the season, let yourself be tempted by the swimming pool or a spot of sunbathing. This journey without a port of call will also be an opportunity to enjoy the conferences or shows proposed on board, depending on the activities offered, or to do some shopping in the boutique or to meet the PONANT photographers in their dedicated space. As for lovers of the open sea, they will be able to visit the ship's upper deck to admire the spectacle of the waves and perhaps be lucky enough to observe marine species. A truly enchanted interlude, combining comfort, rest and entertainment.

Day 13 - Dakar *

During your journey at sea, make the most of the many services and activities on board. Treat yourself to a moment of relaxation in the spa or stay in shape in the fitness centre. Depending on the season, let yourself be tempted by the swimming pool or a spot of sunbathing. This journey without a port of call will also be an opportunity to enjoy the conferences or shows proposed on board, depending on the activities offered, or to do some shopping in the boutique or to meet the PONANT photographers in their dedicated space. As for lovers of the open sea, they will be able to visit the ship's upper deck to admire the spectacle of the waves and perhaps be lucky enough to observe marine species. A truly enchanted interlude, combining comfort, rest and entertainment.

Please note: *

Itineraries are subject to change.

Wild Earth Travel

Small Ships, Big Adventures

0800 945 3327 (within New Zealand) | +64 (0) 3 365 1355 | **1800 107 715** (within Australia)

info@wildearth-travel.com | **wildearth-travel.com**



Wild Earth Travel

Small Ships, Big Adventures

wildearth-travel.com

info@wildearth-travel.com

YOUR SHIP: LE BOUGAINVILLE

YOUR SHIP: Le Bougainville

VESSEL TYPE: Luxury

LENGTH:

PASSENGER CAPACITY: 92 cabins

BUILT/REFURBISHED: 2017/2018

Featuring innovative and environmentally-friendly equipment, elegantly designed cabins, spacious suites with large windows, and lounge areas that open onto the outside, this new limited-capacity yacht boasting just 92 cabins and suites will offer you a truly unique cruising experience.

As the first ship in a new series that remains true to the Ponant spirit, Le Bougainville will embody the unique atmosphere that is the cruise line's hallmark: a subtle blend of refinement, intimacy and comfort.

Aboard this ship that flies the French flag, you will experience the incomparable pleasure of an intimate cruise, with the possibility of exploring an ever-increasing range of destinations in an ethnic-chic ambiance with luxury service.

Experience a luxurious setting where the accent is on authenticity and passion for travel.

RESTAURANTS

As it is an essential part of French culture, gastronomy will naturally have pride of place aboard this new ship. Through its two restaurants, Le Bougainville will invite you on a journey to elegance and epicureanism.

In a relaxed atmosphere, a first dining area located on Deck 3

and able to seat 70 will serve grilled meats daily, along with a variety of salads and desserts.

To the back of Deck 4, you will find a 260 m² panoramic restaurant which can accommodate all of our passengers in a single sitting. Designed differently to that on our other ships, this dining area, which opens onto the outside, will have a buffet of salads, desserts and cheeses at your disposal. Our discreet and attentive crew will provide table service for hot meals.

PUBLIC AREAS

Like Le Boreal and its sisterships, Le Bougainville has many common areas that are designed and equipped to meet all of your needs while preserving the intimacy of each passenger.

A 140 m² reception area includes:

A reception/concierge desk, An excursions desk, The ship's administrative services, The sales office, manned by our Guest Relations Officer, Our 50 m² boutique which sells clothing, jewellery, beauty products, postcards and various accessories, Toilets accessible to passengers with reduced mobility.

A new hydraulic platform with adjustable height provides: Easier boarding than on any other cruise ship, Easier Zodiac embarkation and disembarkation for expeditions, Easier access to the sea for swimming and practising various water sports such as kayaking or paddle-boarding.

A pool deck offering: A pool with a panoramic view, equipped with a counter-current swimming system, A pleasant solarium, An outdoor bar and lounge with armchairs and sofas.

A 200 m² main lounge which can accommodate all of our passengers to share convivial moments and to host activities organised during the day or evening.

Wild Earth Travel

Small Ships, Big Adventures

0800 945 3327 (within New Zealand) | +64 (0) 3 365 1355 | **1800 107 715** (within Australia)

info@wildearth-travel.com | wildearth-travel.com

Wild Earth Travel

Small Ships, Big Adventures

wildearth-travel.com

info@wildearth-travel.com

Lastly, a theatre that seats 188, equipped with: The latest sound and lighting technology, A LED wall as the stage backdrop, for the projection of high-resolution images and videos.



and videos.

Wild Earth Travel

Small Ships, Big Adventures

0800 945 3327 (within New Zealand) | +64 (0) 3 365 1355 | **1800 107 715** (within Australia)

info@wildearth-travel.com | **wildearth-travel.com**



wildearth-travel.com

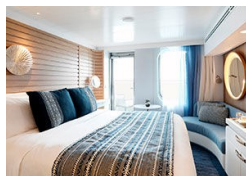
info@wildearth-travel.com

INSIDE YOUR SHIP

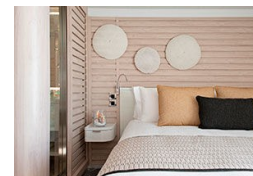


- Owner's Suite Deck 6
- Privilege Suites Deck 5-6
- Grand Deluxe Suites Deck 5-6
- Prestige Suites Deck 5-6
- Deluxe Suites Deck 5-6
- Prestige Cabins Deck 4-5-6
- Deluxe Cabins Deck 3

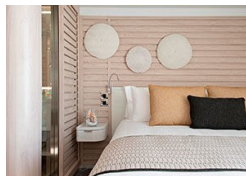
Deluxe Stateroom



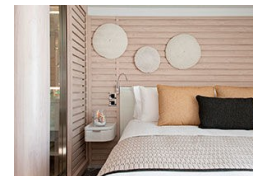
Deluxe Suite Deck 3



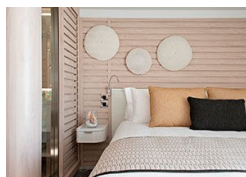
Deluxe Suite Deck 4



Deluxe Suite Deck 5



Deluxe Suite Deck 6



Grand Deluxe Suite Deck 5



Grand Deluxe Suite Deck 6



Owner's Suite



Wild Earth Travel

Small Ships, Big Adventures

wildearth-travel.com

info@wildearth-travel.com

PRICING

29-Mar-2026 to 10-Apr-2026

Deluxe Stateroom	5070 AUD pp
Prestige Deck 4	5330 AUD pp
Prestige Deck 5	5480 AUD pp
Prestige Deck 6	5690 AUD pp
Deluxe Suite Deck 6	7570 AUD pp
Deluxe Suite Deck 5	7570 AUD pp
Deluxe Suite Deck 4	7570 AUD pp
Deluxe Suite Deck 3	7570 AUD pp
Prestige Deck 5 Suite	8140 AUD pp
Prestige Deck 6 Suite	8390 AUD pp
Privilege Suite Deck 6	8600 AUD pp
Privilege Suite Deck 5	8600 AUD pp
Grand Deluxe Suite Deck 5	8860 AUD pp
Grand Deluxe Suite Deck 6	8860 AUD pp

31-May-2026 to 03-Jun-2026

Deluxe Stateroom	10830 AUD pp
Prestige Deck 4	11410 AUD pp
Prestige Deck 5	11980 AUD pp
Prestige Deck 6	12670 AUD pp
Deluxe Suite Deck 3	20570 AUD pp
Deluxe Suite Deck 5	20570 AUD pp
Deluxe Suite Deck 6	20570 AUD pp
Deluxe Suite Deck 4	20570 AUD pp
Prestige Deck 5 Suite	22880 AUD pp
Prestige Deck 6 Suite	23440 AUD pp
Privilege Suite Deck 6	24590 AUD pp
Privilege Suite Deck 5	24590 AUD pp
Owner's Suite	29740 AUD pp
Grand Deluxe Suite Deck 6	29740 AUD pp
Grand Deluxe Suite Deck 5	29740 AUD pp

Wild Earth Travel

Small Ships, Big Adventures

0800 945 3327 (within New Zealand) | +64 (0) 3 365 1355 | **1800 107 715** (within Australia)

info@wildearth-travel.com | wildearth-travel.com



Wild Earth Travel

Small Ships, Big Adventures

wildearth-travel.com

info@wildearth-travel.com

PRICING

03-Mar-2027 to 15-Mar-2027

Deluxe Stateroom	5180 AUD pp
Prestige Deck 4	5440 AUD pp
Prestige Deck 5	5590 AUD pp
Prestige Deck 6	5800 AUD pp
Deluxe Suite Deck 6	7730 AUD pp
Deluxe Suite Deck 3	7730 AUD pp
Deluxe Suite Deck 5	7730 AUD pp
Deluxe Suite Deck 4	7730 AUD pp
Prestige Deck 5 Suite	8310 AUD pp
Prestige Deck 6 Suite	8570 AUD pp
Privilege Suite Deck 6	8770 AUD pp
Privilege Suite Deck 5	8770 AUD pp
Grand Deluxe Suite Deck 6	9040 AUD pp
Grand Deluxe Suite Deck 5	9040 AUD pp



Wild Earth Travel
Small Ships, Big Adventures

0800 945 3327 (within New Zealand) | +64 (0) 3 365 1355 | **1800 107 715** (within Australia)

info@wildearth-travel.com | **wildearth-travel.com**



Wild Earth Travel

Small Ships, Big Adventures

wildearth-travel.com

info@wildearth-travel.com

SPECIAL OFFERS

Online prices reflect the current brochure fare savings of up to 30%. Prices may change based on demand. Terms and conditions apply. This special offer is subject to availability. Please contact us for more details.

Wild Earth Travel

Small Ships, Big Adventures

0800 945 3327 (within New Zealand) | +64 (0) 3 365 1355 | **1800 107 715** (within Australia)

info@wildearth-travel.com | **wildearth-travel.com**