

Wild Earth Travel

Small Ships, Big Adventures

wildearth-travel.com

info@wildearth-travel.com

OCEAN VOYAGE THROUGH NORTH ATLANTIC: BREST - REYKJAVÍK

PONANT invites you to spend several days aboard Le Commandant Charcot, the first hybrid electric polar exploration ship, enjoying an immersive interlude during an Ocean Voyage. Leaving from Brest, you will set sail north for a five-day voyage, without ports of call, to Reykjavik. The sea exercises an undeniable power of attraction. Infinite time and space take on their full meaning in the heart of the elements, inviting you to humbly enter the here and now. As lovers of the sea, experienced observers and curious explorers of the planet, you can make the most of this rare opportunity and, alongside those who bring the ship to life, discover the soul of Le Commandant Charcot, which is fitted out for polar exploration. During this voyage with the ocean as the horizon, you will share an on-board experience that follows the pace of the ship and its crew. You will feel the majesty and the power of this ship, whose design is a genuine technological achievement. Alongside the naturalists who will share their knowledge of the polar regions with you, you will understand the challenges of scientific knowledge and gain awareness about the actions of the company, which is committed to preserving biodiversity. Following in the wake of Commandant Cousteau, we are convinced that people only really protect what they know. The interior design, entrusted to the architects Jean-Michel Wilmotte and Jean-Philippe Nuel, provides a precious cocoon in which it feels good to warm up and take shelter so as to get more out of the exterior. Noble materials, soft tones, subdued lighting, refined decoration. The gastronomy symbolises French-style luxury and will offer you fine epicurean escapades, thanks to the menus imagined by Michelin-starred chef Alain Ducasse and the

signature dishes served in his restaurants. Let yourself be tempted by a dip in the Blue Lagoon while you enjoy the light over the sea. The indoor pool, the gym and the fitness classes, the Biologique Recherche spa, with its treatment rooms, massages and sauna, the snow room and the hair salon will also allow you to unwind without a care in the world. Enjoy this crossing aboard Le Commandant Charcot, like a prelude to the infinite possibilities of knowledge and openness to the world that it promises, between a conscious adventure and new explorations.



plorations.

ITINERARY

Wild Earth Travel

Small Ships, Big Adventures

0800 945 3327 (within New Zealand) | +64 (0) 3 365 1355 | **1800 107 715** (within Australia)

info@wildearth-travel.com | **wildearth-travel.com**



Wild Earth Travel

Small Ships, Big Adventures

wildearth-travel.com

info@wildearth-travel.com

Day 1 BREST

Itineraries are subject to change.

Built around a magnificent harbour, Brest opens onto the Iroise Sea and the river Penfeld that runs through the city. Its port was used by the French navy for centuries before becoming an important commercial port and marina appreciated by the great navigators. As you stroll along Quai Commandant Malbert, you may catch a glimpse of the superb schooner La Recouvrance and, in the distance, a few lighthouses along the chiselled coastline. You will be able to discover the marine ecosystems at the Oceanopolis centre and visit the naval museum housed in Chateau de Brest. Officially recognised as a city of art and history, Brest will also charm you with its architectural eclecticism, mingling modernism, neoclassicism, art nouveau and art deco.

Days 2 - 4 AT SEA ABOARD LE COMMANDANT CHARCOT

Spend exceptional moments sailing aboard Le Commandant Charcot, the world's first luxury polar exploration vessel and the first PC2-class polar cruise ship capable of sailing into the very heart of the ice, on seas and oceans which the frozen conditions render inaccessible to ordinary ships. Le Commandant Charcot is fitted with oceanographic and scientific equipment selected by a committee of experts. Take advantage of the on-board lectures and opportunities for discussion with these specialists to learn more about the poles. Participate in furthering scientific research with PONANT and let us discover together what these fascinating destinations have yet to reveal to us.

Day 5 REYKJAVÍK

Iceland's capital stretches along the edge of a vast bay in the west of the country. Perlan, the "Pearl of Reykjavik", a museum located on 'Oskjuhlíð hill, offers a panoramic view of the lush, green landscapes. A little further, one can easily spot the signpost showing the way to the evangelical Hallgrímskirkja church, and to the historical centre where one can stroll along the Skólavörðustígur and the Laugavegur, two lively streets with charming small shops. For some relaxation just outside of the city, visitors have the opportunity to visit the Reykjanes peninsula and its famous thermal lagoons of the Blue Lagoon.

Please Note:

Wild Earth Travel

Small Ships, Big Adventures

0800 945 3327 (within New Zealand) | +64 (0) 3 365 1355 | **1800 107 715** (within Australia)

info@wildearth-travel.com | **wildearth-travel.com**



Wild Earth Travel

Small Ships, Big Adventures

wildearth-travel.com

info@wildearth-travel.com

YOUR SHIP: LE COMMANDANT-CHARCOT

YOUR SHIP: Le Commandant-Charcot

VESSEL TYPE: Polar Luxury Expedition

LENGTH: 149.9 meters

PASSENGER CAPACITY: 135 cabins

BUILT/REFURBISHED: 2018/2019

Be the first aboard Le Commandant-Charcot, the world's luxury polar exploration vessel, and enjoy a unique sailing experience in the Arctic or Antarctic!

With its hybrid propulsion combining liquefied natural gas (LNG) and electric generators, Le Commandant-Charcot has been designed to minimise the environmental impact of travel to the furthest latitudes.

The decoration of the ship, imagined by two internationally renowned design and architecture firms - the studio of Jean-Philippe Nuel and Wilmotte & Associates - is designed to be in harmony with the environment. The approach is contemporary with the desire to create a warm and elegant setting; stone, wood and leather recall the natural environment in which the ship is sailing.

Equipped with just 135 staterooms including 31 suites with balconies and outside views, Le Commandant-Charcot welcomes you in an intimate and refined atmosphere. Outstanding gastronomy in the two restaurants, relaxation in the indoor pool surrounded by its winter garden, relaxation in the well-being area with sauna and Snow Room... Like on a private yacht, each of our guests is unique.

PUBLIC AREAS

Le Commandant-Charcot has many common areas that are designed and equipped to meet all of your needs while preserving the intimacy of each passenger.

A 177 m² reception area includes: A reception/concierge desk, An expeditions desk, The ship's administrative services, The sales office, manned by our Hospitality & Travel Manager officer, Our boutique which sells clothing, jewellery, beauty products, postcards and various accessories, The image & photo desk.

The different lounges: A 302 m² main lounge including a 28 m² cigar lounge, a tea corner and a bar, with live music on selected evenings, A 400 m² panoramic bar and lounge, An open-air Bar.

The recreation spaces

Fitness & Beauty Corner: Fitness room: Elliptic, running machines, bicycles...

Beauty Corner: Hairdresser, Massage rooms, Sauna, Snow Room, Nail Shop.

Pool area: Indoor Pool and winter garden - Outdoor Pool

Theatre: Capacity: 270-276 - Main show room for conferences and live entertainment on selected evenings - State-of-the-art audio and video technology.

Leisure area: Public areas - Library - Medical centre.

16 Zodiac®.

Wild Earth Travel

Small Ships, Big Adventures

0800 945 3327 (within New Zealand) | +64 (0) 3 365 1355 | **1800 107 715** (within Australia)

info@wildearth-travel.com | **wildearth-travel.com**



Wild Earth Travel

Small Ships, Big Adventures

wildearth-travel.com

info@wildearth-travel.com



16 Zodiac®.



Wild Earth Travel

Small Ships, Big Adventures

0800 945 3327 (within New Zealand) | +64 (0) 3 365 1355 | **1800 107 715** (within Australia)

info@wildearth-travel.com | **wildearth-travel.com**





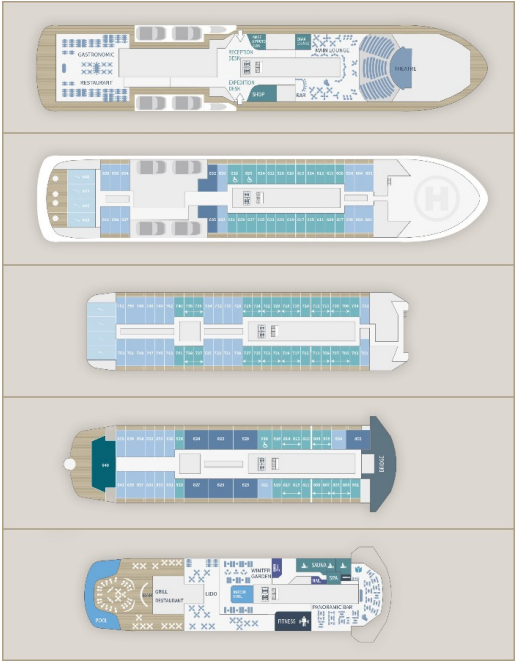
Wild Earth Travel

Small Ships, Big Adventures

wildearth-travel.com

info@wildearth-travel.com

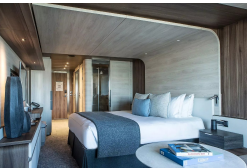
INSIDE YOUR SHIP



Deluxe Suite Deck 6



Deluxe Suite Deck 8



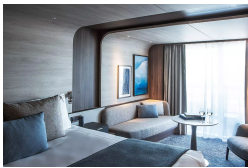
Owner's Suite



Prestige Stateroom Deck 7



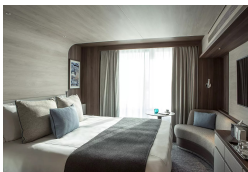
Deluxe Suite Deck 7



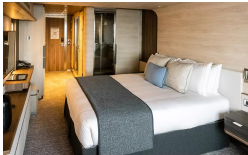
Grand Prestige Suite



Prestige Stateroom Deck 6



Prestige Stateroom Deck 8





Wild Earth Travel

Small Ships, Big Adventures

wildearth-travel.com

info@wildearth-travel.com

PRICING

30-Apr-2026 to 04-May-2026

| | |
|----------------------------------|---------------------|
| Prestige Stateroom Deck 6 | 5330 AUD pp |
| Prestige Stateroom Deck 7 | 5430 AUD pp |
| Prestige Stateroom Deck 8 | 5540 AUD pp |
| Deluxe Suite Deck 6 | 5690 AUD pp |
| Deluxe Suite Deck 7 | 5970 AUD pp |
| Deluxe Suite Deck 8 | 6180 AUD pp |
| Prestige Suite Deck 7 | 7990 AUD pp |
| Prestige Suite Deck 8 | 8260 AUD pp |
| Grand Prestige Suite | 8520 AUD pp |
| Privilege Suite Deck 8 | 9050 AUD pp |
| Suite Duplex | 12510 AUD pp |
| Owner's Suite | 15390 AUD pp |

ADDITIONAL CHARGES:

Port Taxes and Fees 300 AUD pp



Wild Earth Travel
Small Ships, Big Adventures

0800 945 3327 (within New Zealand) | +64 (0) 3 365 1355 | **1800 107 715** (within Australia)

info@wildearth-travel.com | **wildearth-travel.com**



Wild Earth Travel

Small Ships, Big Adventures

wildearth-travel.com

info@wildearth-travel.com

SPECIAL OFFERS

Online prices reflect the current brochure fare savings of up to 30%. Prices may change based on demand. Terms and conditions apply. This special offer is subject to availability. Please contact us for more details.

Wild Earth Travel

Small Ships, Big Adventures

0800 945 3327 (within New Zealand) | +64 (0) 3 365 1355 | **1800 107 715** (within Australia)

info@wildearth-travel.com | **wildearth-travel.com**