

# Wild Earth Travel

*Small Ships, Big Adventures*

**wildearth-travel.com**

**info@wildearth-travel.com**

## OCEAN VOYAGE: FORT DE FRANCE - LAS PALMAS IN LUXURY

From sea to sea, or from continent to continent, PONANT welcomes you aboard its ships for a Sea Journey. A few times a year we invite sea lovers, dreamers, and keen observers of endless horizons to join our non-stop journeys, to enjoy the comfort of our ships for an extended period and share the daily lives of our crew.



### ITINERARY

#### Day 1 FORT-DE-FRANCE

Located on the western coast of Martinique, Fort-de-France will amaze you by the splendour of its bay, a magnificent cut-out in the coastline, considered as one of the most beautiful in the world. At the harbour mouth, on its strip of land, fort Saint-Louis overlooks the capital city of Martinique. If you climb up to it, you can see some breath-taking views. Saint Louis Cathedral and the Schoelcher library bear witness to a secular history, intimately linked to the island's story. Why not try some fresh coconut at the colourful Grand Marche. Two really pleasant places you can take a breather in, right in the heart of the city, are the garden of Balata and the Aime Cesaire park.

#### Days 2 - 10 AT SEA

Wild Earth Travel

*Small Ships, Big Adventures*

**0800 945 3327** (within New Zealand) | +64 (0) 3 365 1355 | **1800 107 715** (within Australia)

info@wildearth-travel.com | **wildearth-travel.com**



# Wild Earth Travel

*Small Ships, Big Adventures*

**wildearth-travel.com**

**info@wildearth-travel.com**

During your journey at sea, make the most of the many services and activities on board. Treat yourself to a moment of relaxation in the spa or stay in shape in the fitness centre. Depending on the season, let yourself be tempted by the swimming pool or a spot of sunbathing. This journey without a port of call will also be an opportunity to enjoy the conferences or shows proposed on board, depending on the activities offered, or to do some shopping in the boutique or to meet the PONANT photographers in their dedicated space. As for lovers of the open sea, they will be able to visit the ship's upper deck to admire the spectacle of the waves and perhaps be lucky enough to observe marine species. A truly enchanted interlude, combining comfort, rest and entertainment.

## Day 11 LAS PALMAS DE GRAN CANARIA, CANARY ISLANDS

A stopover of sunny climes, Las Palmas is located on the north-east coast of Gran Canaria. A few streets away from Puerto de la Luz port, you'll discover the vast Las Canteras beach, bordered with the town's characteristic palms. You'll find these palms are all over Las Palmas, in the streets and squares, especially on the plaza de Santa Ana in the heart of the historical district. It feels like you've travelled back in time here, as you stand looking at the tall houses beside the Santa Ana cathedral. Very close by, you can visit the Casa de Colon, a museum dedicated to the famous explorer. The museum is housed in the palace belonging to the island's former governor. Chances are, you'll be drawn to the covered Vegueta market to partake in some daily life along with the locals and taste some unfamiliar dishes.

### Please note:

Itineraries are subject to change.

**Wild Earth Travel**

*Small Ships, Big Adventures*

**0800 945 3327** (within New Zealand) | +64 (0) 3 365 1355 | **1800 107 715** (within Australia)

info@wildearth-travel.com | **wildearth-travel.com**

## YOUR SHIP: LE BELLOT

<b>YOUR SHIP:</b>	<b>Le Bellot</b>
<b>VESSEL TYPE:</b>	<b>Luxury Expedition / Cruise Ship</b>
<b>LENGTH:</b>	<b>131 metres</b>
<b>PASSENGER CAPACITY:</b>	<b>184</b>
<b>BUILT/REFURBISHED:</b>	<b>2019-2020</b>

Featuring innovative and environmentally-friendly equipment, elegantly designed staterooms, spacious suites with large windows, and lounge areas that open onto the outside, this new limited-capacity yacht boasting just 92 staterooms and suites will offer you a truly unique cruising experience.

As the first ship in a new series that remains true to the Ponant spirit, Le Bellot will embody the unique atmosphere that is the cruise line's hallmark: a subtle blend of refinement, intimacy and comfort.

Aboard this ship that flies the French flag, you will experience the incomparable pleasure of an intimate cruise, with the possibility of exploring an ever-increasing range of destinations in an ethnic-chic ambiance with luxury service.

Experience a luxurious setting where the accent is on authenticity and passion for travel.

### RESTAURANTS

As it is an essential part of French culture, gastronomy will naturally have pride of place aboard this new ship.

To the back of Deck 4, you will find a 260 m<sup>2</sup> panoramic restaurant which can accommodate all of our passengers in a single sitting. Designed differently to that on our other ships, this

dining area, which opens onto the outside, will have a buffet of salads, desserts and cheeses at your disposal. Our discreet and attentive crew will provide table service for hot meals.

In a relaxed atmosphere, an outdoor grill on Deck 3 will serve grilled meats with a variety of salads and desserts.

### PUBLIC AREAS

Le Bellot has many common areas that are designed and equipped to meet all of your needs while preserving the intimacy of each passenger.

A 140 m<sup>2</sup> reception area includes:

A reception/concierge desk,

An excursions desk,

The ship's administrative services,

The sales office, manned by our Guest Relations Officer,

Our 50 m<sup>2</sup> boutique which sells clothing, jewellery, beauty products, postcards and various accessories,

Toilets accessible to passengers with reduced mobility.

A new hydraulic platform with adjustable height provides:

Easier boarding than on any other cruise ship,

Easier Zodiac embarkation and disembarkation for expeditions,

Easier access to the sea for swimming and practising various water sports such as kayaking or paddle-boarding.

A pool deck offering:

A pool with a panoramic view, equipped with a counter-current swimming system,

A pleasant solarium,

An outdoor bar and lounge with armchairs and sofas.

A 200 m<sup>2</sup> main lounge which can accommodate all of our passengers to share convivial moments and to host activities



# Wild Earth Travel

*Small Ships, Big Adventures*

**wildearth-travel.com**

**info@wildearth-travel.com**

organised during the day or evening.

Lastly, a theatre that seats 188, equipped with:

The latest sound and lighting technology,

A LED wall as the stage backdrop, for the projection of high-resolution images and videos.



and videos.

**Wild Earth Travel**

*Small Ships, Big Adventures*

**0800 945 3327** (within New Zealand) | +64 (0) 3 365 1355 | **1800 107 715** (within Australia)

info@wildearth-travel.com | **wildearth-travel.com**

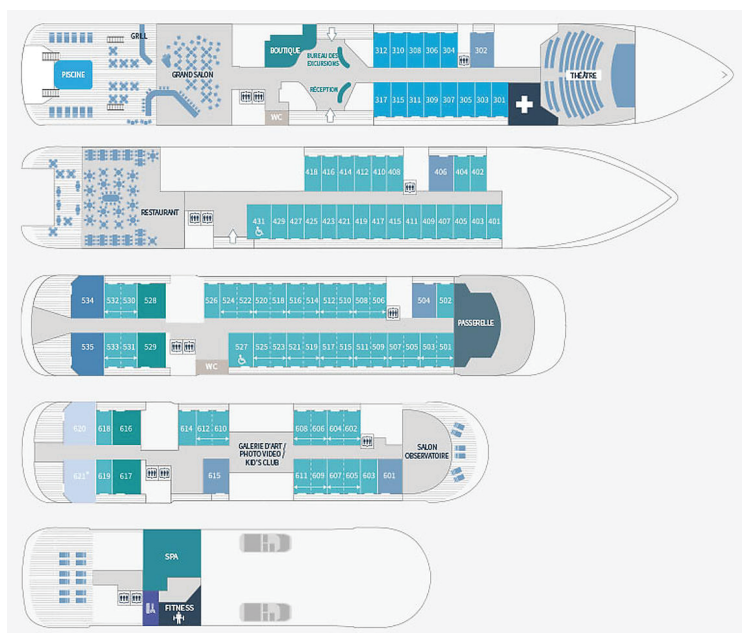
# Wild Earth Travel

*Small Ships, Big Adventures*

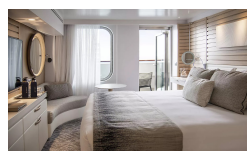
[wildearth-travel.com](http://wildearth-travel.com)

[info@wildearth-travel.com](mailto:info@wildearth-travel.com)

## INSIDE YOUR SHIP



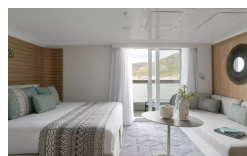
Deluxe Stateroom



Deluxe Suite



Deluxe Suite Deck 3



Deluxe Suite Deck 4



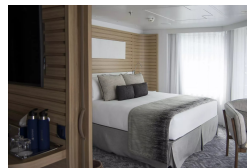
Deluxe Suite Deck 5



Deluxe Suite Deck 6



Grand Deluxe Suite



Grand Deluxe Suite Deck 5



Wild Earth Travel

*Small Ships, Big Adventures*

0800 945 3327 (within New Zealand) | +64 (0) 3 365 1355 | 1800 107 715 (within Australia)

[info@wildearth-travel.com](mailto:info@wildearth-travel.com) | [wildearth-travel.com](http://wildearth-travel.com)

# Wild Earth Travel

*Small Ships, Big Adventures*

[wildearth-travel.com](http://wildearth-travel.com)

[info@wildearth-travel.com](mailto:info@wildearth-travel.com)

## PRICING

### 16-Mar-2026 to 26-Mar-2026

Deluxe Stateroom	4720 AUD pp
Prestige Stateroom Deck 4	4960 AUD pp
Prestige Stateroom Deck 5	5110 AUD pp
Prestige Stateroom Deck 6	5300 AUD pp
Deluxe Suite Deck 4	7110 AUD pp
Deluxe Suite	7110 AUD pp
Deluxe Suite Deck 6	7110 AUD pp
Deluxe Suite Deck 5	7110 AUD pp
Prestige Suite Deck 5	7650 AUD pp
Prestige Suite Deck 6	7890 AUD pp
Privilege Suite Deck 6	8080 AUD pp
Privilege Suite	8080 AUD pp
Grand Deluxe Suite	8330 AUD pp
Grand Deluxe Suite Deck 6	8330 AUD pp
Owner's Suite	9790 AUD pp

### 06-Apr-2026 to 16-Apr-2026

Deluxe Stateroom	5220 AUD pp
Prestige Deck 4	5490 AUD pp
Prestige Deck 5	5660 AUD pp
Prestige Deck 6	5870 AUD pp
Deluxe Suite Deck 3	7910 AUD pp
Deluxe Suite Deck 4	7910 AUD pp
Deluxe Suite Deck 6	7910 AUD pp
Deluxe Suite Deck 5	7910 AUD pp
Prestige Deck 5 Suite	8510 AUD pp
Prestige Deck 6 Suite	8780 AUD pp
Privilege Suite Deck 5	9000 AUD pp
Privilege Suite Deck 6	9000 AUD pp
Grand Deluxe Suite Deck 5	9280 AUD pp
Grand Deluxe Suite Deck 6	9280 AUD pp

#### ADDITIONAL CHARGES:

Port Taxes 740 AUD pp



# Wild Earth Travel

*Small Ships, Big Adventures*

**wildearth-travel.com**

**info@wildearth-travel.com**

## SPECIAL OFFERS

Online prices reflect the current brochure fare savings of up to 30%. Prices may change based on demand. Terms and conditions apply. This special offer is subject to availability. Please contact us for more details.

**Wild Earth Travel**

*Small Ships, Big Adventures*

**0800 945 3327** (within New Zealand) | +64 (0) 3 365 1355 | **1800 107 715** (within Australia)

info@wildearth-travel.com | **wildearth-travel.com**