

# Wild Earth Travel

*Small Ships, Big Adventures*



**wildearth-travel.com**

**info@wildearth-travel.com**

## OCEAN VOYAGE: DUNEDIN - NOUMEA 7 DAYS IN LUXURY

From sea to sea, or from continent to continent, PONANT welcomes you aboard its ships for a Sea Journey. A few times a year we invite sea lovers, dreamers, and keen observers of endless horizons to join our non-stop journeys, to enjoy the comfort of our ships for an extended period and share the daily lives of our crew.



### ITINERARY

#### Day 1 DUNEDIN

Dunedin is New Zealand's oldest city and is often referred to as the Edinburgh of New Zealand. This city of the south, wears its Scottish heritage with pride. The city contains some of the best preserved Victorian and Edwardian architecture in the Southern Hemisphere. The Silverpeaks hinterland to the North West provides a picturesque backdrop and The Otago Peninsula, which lies within the city boundaries, has internationally renowned wildlife reserves, including the only mainland breeding colony of Northern Royal Albatross.

#### Days 2 - 6 AT SEA

During your journey at sea, make the most of the many services and activities

Wild Earth Travel

*Small Ships, Big Adventures*

**0800 945 3327** (within New Zealand) | +64 (0) 3 365 1355 | **1800 107 715** (within Australia)

info@wildearth-travel.com | **wildearth-travel.com**



# Wild Earth Travel

*Small Ships, Big Adventures*



**wildearth-travel.com**

**info@wildearth-travel.com**

on board. Treat yourself to a moment of relaxation in the spa or stay in shape in the fitness centre. Depending on the season, let yourself be tempted by the swimming pool or a spot of sunbathing. This journey without a port of call will also be an opportunity to enjoy the conferences or shows proposed on board, depending on the activities offered, or to do some shopping in the boutique or to meet the PONANT photographers in their dedicated space. As for lovers of the open sea, they will be able to visit the ship's upper deck to admire the spectacle of the waves and perhaps be lucky enough to observe marine species. A truly enchanted interlude, combining comfort, rest and entertainment.

## Day 7 NOUMÉA

Perched on a peninsula between bays and hills, on the south-west coast of Grande Terre, Noumea enjoys a magnificent natural setting. The town shelters some exceptional biodiversity, thanks especially to the coastal mangroves. To feel the town's heartbeat, you can mosey in the place des Cocotiers, where Noumeans love to gather. The Tjibaou cultural centre unveils the secrets of the kanak culture. As for the Hagen castle or the maison Celieres, these are precious witnesses of a colonial past. But Noumea is also about sumptuous beaches.

### Please Note:

Itineraries are subject to change.

# Wild Earth Travel

*Small Ships, Big Adventures*



**wildearth-travel.com**

**info@wildearth-travel.com**

## YOUR SHIP: LE SOLEAL

<b>YOUR SHIP:</b>	<b>Le Soleal</b>
<b>VESSEL TYPE:</b>	<b>Luxury Small Ship</b>
<b>LENGTH:</b>	<b>142 metres</b>
<b>PASSENGER CAPACITY:</b>	<b>264</b>
<b>BUILT/REFURBISHED:</b>	<b>2013</b>



Sailing under the French flag, this magnificent yacht of only 132 staterooms and suites, with balconies, joined in 2013. You will be enchanted by the contemporary decor inspired by the luxury yachting world, with fluid lines and a modern colour scheme combining natural wood with shades of grey and white.

A refined ambience is enhanced by the quality of the workmanship and materials: white Corian counters in the lobby contrast with the warmth of leather to recall a boat's hull, while the central sculpture of enamelled pieces takes its inspiration from the sea. In the loungebar, the carpet picks up a tennis stripe theme symbolising a certain idea of cruising, one synonymous with French elegance and a chic seaside spirit.

**Wild Earth Travel**

*Small Ships, Big Adventures*

**0800 945 3327** (within New Zealand) | +64 (0) 3 365 1355 | **1800 107 715** (within Australia)

info@wildearth-travel.com | **wildearth-travel.com**

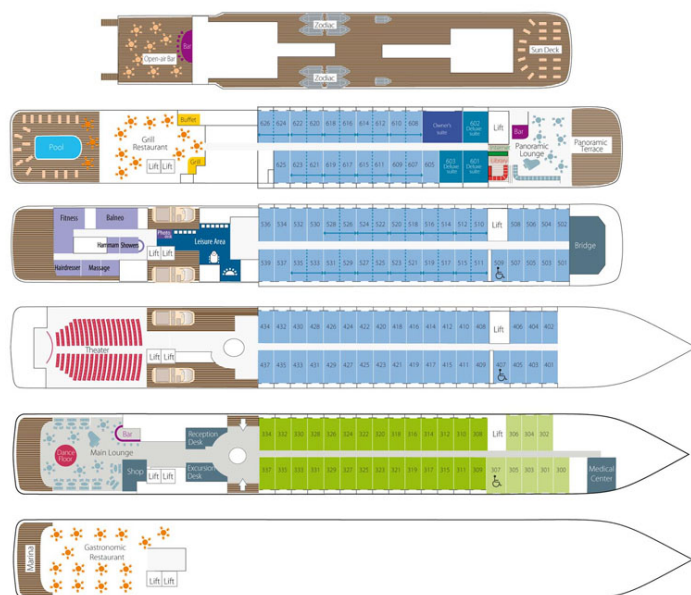




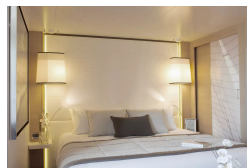
[wildearth-travel.com](http://wildearth-travel.com)

[info@wildearth-travel.com](mailto:info@wildearth-travel.com)

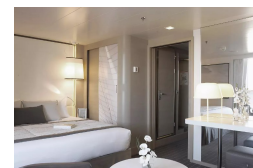
## INSIDE YOUR SHIP



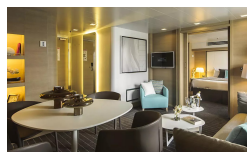
DeLuxe Stateroom



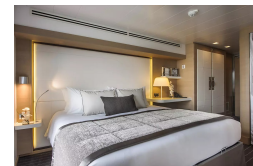
Deluxe Suite



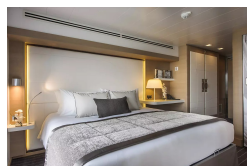
Owner's Suite



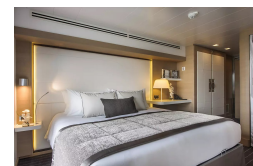
Prestige Stateroom - Deck 4



Prestige Stateroom - Deck 5



Prestige Stateroom - Deck 6



Prestige Suite - Deck 5



Prestige Suite - Deck 6



# Wild Earth Travel

*Small Ships, Big Adventures*



**wildearth-travel.com**

**info@wildearth-travel.com**

## PRICING

**16-Feb-2026 to 22-Feb-2026**

<b>Superior Stateroom</b>	<b>2320 AUD pp</b>
<b>DeLuxe Stateroom</b>	<b>2500 AUD pp</b>
<b>Prestige Stateroom - Deck 4</b>	<b>2630 AUD pp</b>
<b>Prestige Stateroom - Deck 5</b>	<b>2700 AUD pp</b>
<b>Prestige Stateroom - Deck 6</b>	<b>2800 AUD pp</b>
<b>Deluxe Suite</b>	<b>3760 AUD pp</b>
<b>Prestige Suite - Deck 5</b>	<b>4040 AUD pp</b>
<b>Prestige Suite - Deck 6</b>	<b>4170 AUD pp</b>
<b>Owner's Suite</b>	<b>4820 AUD pp</b>

### ADDITIONAL CHARGES:

**Port Taxes and Fees 440 AUD pp**

**Wild Earth Travel**  
*Small Ships, Big Adventures*

**0800 945 3327** (within New Zealand) | +64 (0) 3 365 1355 | **1800 107 715** (within Australia)

info@wildearth-travel.com | **wildearth-travel.com**



# Wild Earth Travel

*Small Ships, Big Adventures*



**wildearth-travel.com**

**info@wildearth-travel.com**

## SPECIAL OFFERS

Online prices reflect the current brochure fare savings of up to 30%. Prices may change based on demand. Terms and conditions apply. This special offer is subject to availability. Please contact us for more details.



**Wild Earth Travel**

*Small Ships, Big Adventures*

**0800 945 3327** (within New Zealand) | +64 (0) 3 365 1355 | **1800 107 715** (within Australia)

info@wildearth-travel.com | **wildearth-travel.com**