

# Wild Earth Travel

*Small Ships, Big Adventures*

**wildearth-travel.com**

**info@wildearth-travel.com**

## OCEAN VOYAGE: FROM CAPE TOWN TO BREST IN LUXURY

PONANT invites you to spend several days aboard Le Commandant Charcot, the first hybrid electric polar exploration ship, enjoying an immersive interlude during an Ocean Voyage. Leaving from Cape Town, you will set sail north for a five-day voyage, without ports of call, to Brest.

The sea exercises an undeniable power of attraction. Infinite time and space take on their full meaning in the heart of the elements, inviting you to humbly enter the here and now. As lovers of the sea, experienced observers and curious explorers of the planet, you can make the most of this rare opportunity and, alongside those who bring the ship to life, discover the soul of Le Commandant Charcot, which is fitted out for polar exploration. During this voyage with the ocean as the horizon, you will share an on-board experience that follows the pace of the ship and its crew. You will feel the majesty and the power of this ship, whose design is a genuine technological achievement.

Alongside the naturalists who will share their knowledge of the polar regions with you, you will understand the challenges of scientific knowledge and gain awareness about the actions of the company, which is committed to preserving biodiversity. Following in the wake of Commandant Cousteau, we are convinced that people only really protect what they know.

The interior design, entrusted to the architects Jean-Michel Wilmotte and Jean-Philippe Nuel, provides a precious cocoon in which it feels good to warm up and take shelter so as to get more out of the exterior. Noble materials, soft tones, subdued

lighting, refined decoration. The gastronomy symbolises French-style luxury and will offer you fine epicurean escapades, thanks to the menus imagined by Michelin-starred chef Alain Ducasse and the signature dishes served in his restaurants.

Let yourself be tempted by a dip in the Blue Lagoon while you enjoy the light over the sea. The indoor pool, the gym and the fitness classes, the Biologique Recherche spa, with its treatment rooms, massages and sauna, the snow room and the hair salon will also allow you to unwind without a care in the world.



the world.

### ITINERARY

Wild Earth Travel

*Small Ships, Big Adventures*

**0800 945 3327** (within New Zealand) | +64 (0) 3 365 1355 | **1800 107 715** (within Australia)

info@wildearth-travel.com | **wildearth-travel.com**



# Wild Earth Travel

*Small Ships, Big Adventures*

**wildearth-travel.com**

**info@wildearth-travel.com**

## Day 1 CAPE TOWN

Itineraries are subject to change.

Dynamic and peaceful, cosmopolitan and hip, Cape Town offers its visitors a most unique mix. Here, the locals like to say that their city is "the quintessential melting pot of South Africa". Located in the heart of one of the most beautiful bays in the world and dominated by the famous Table Mountain, it is graced with extraordinary landscapes including sheer cliffs that plunge into the Atlantic Ocean and vast whitesand beaches. We invite you to discover this incredible city, the South African capital of fashion, the art of living, and gastronomy. Further on, the Cape of Good Hope Nature Reserve awaits you and is home to a wide variety of endemic fauna and flora.

## Days 2 - 20 AT SEA

During your journey at sea, make the most of the many services and activities on board. Treat yourself to a moment of relaxation in the spa or stay in shape in the fitness centre. Depending on the season, let yourself be tempted by the swimming pool or a spot of sunbathing. This journey without a port of call will also be an opportunity to enjoy the conferences or shows proposed on board, depending on the activities offered, or to do some shopping in the boutique or to meet the PONANT photographers in their dedicated space. As for lovers of the open sea, they will be able to visit the ship's upper deck to admire the spectacle of the waves and perhaps be lucky enough to observe marine species. A truly enchanted interlude, combining comfort, rest and entertainment.

## Day 21 BREST

Built around a magnificent harbour, Brest opens onto the Iroise Sea and the river Penfeld that runs through the city. Its port was used by the French navy for centuries before becoming an important commercial port and marina appreciated by the great navigators. As you stroll along Quai Commandant Malbert, you may catch a glimpse of the superb schooner La Recouvrance and, in the distance, a few lighthouses along the chiselled coastline. You will be able to discover the marine ecosystems at the Oceanopolis centre and visit the naval museum housed in Chateau de Brest. Officially recognised as a city of art and history, Brest will also charm you with its architectural eclecticism, mingling modernism, neoclassicism, art nouveau and art deco.

Please note:

**Wild Earth Travel**  
*Small Ships, Big Adventures*

**0800 945 3327** (within New Zealand) | +64 (0) 3 365 1355 | **1800 107 715** (within Australia)

info@wildearth-travel.com | **wildearth-travel.com**



## YOUR SHIP: LE COMMANDANT-CHARCOT

**YOUR SHIP:** Le Commandant-Charcot

**VESSEL TYPE:** Polar Luxury Expedition

**LENGTH:** 149.9 meters

**PASSENGER CAPACITY:** 135 cabins

**BUILT/REFURBISHED:** 2018/2019

Be the first aboard Le Commandant-Charcot, the world's luxury polar exploration vessel, and enjoy a unique sailing experience in the Arctic or Antarctic!

With its hybrid propulsion combining liquefied natural gas (LNG) and electric generators, Le Commandant-Charcot has been designed to minimise the environmental impact of travel to the furthest latitudes.

The decoration of the ship, imagined by two internationally renowned design and architecture firms - the studio of Jean-Philippe Nuel and Wilmotte & Associates - is designed to be in harmony with the environment. The approach is contemporary with the desire to create a warm and elegant setting; stone, wood and leather recall the natural environment in which the ship is sailing.

Equipped with just 135 staterooms including 31 suites with balconies and outside views, Le Commandant-Charcot welcomes you in an intimate and refined atmosphere. Outstanding gastronomy in the two restaurants, relaxation in the indoor pool surrounded by its winter garden, relaxation in the well-being area with sauna and Snow Room... Like on a private yacht, each of our guests is unique.

### PUBLIC AREAS

Le Commandant-Charcot has many common areas that are designed and equipped to meet all of your needs while preserving the intimacy of each passenger.

A 177 m<sup>2</sup> reception area includes: A reception/concierge desk, An expeditions desk, The ship's administrative services, The sales office, manned by our Hospitality & Travel Manager officer, Our boutique which sells clothing, jewellery, beauty products, postcards and various accessories, The image & photo desk.

The different lounges: A 302 m<sup>2</sup> main lounge including a 28 m<sup>2</sup> cigar lounge, a tea corner and a bar, with live music on selected evenings, A 400 m<sup>2</sup> panoramic bar and lounge, An open-air Bar.

The recreation spaces

Fitness & Beauty Corner: Fitness room: Elliptic, running machines, bicycles...

Beauty Corner: Hairdresser, Massage rooms, Sauna, Snow Room, Nail Shop.

Pool area: Indoor Pool and winter garden - Outdoor Pool

Theatre: Capacity: 270-276 - Main show room for conferences and live entertainment on selected evenings - State-of-the-art audio and video technology.

Leisure area: Public areas - Library - Medical centre.

16 Zodiac®.



# Wild Earth Travel

*Small Ships, Big Adventures*

**wildearth-travel.com**

**info@wildearth-travel.com**



16 Zodiac®.

Wild Earth Travel

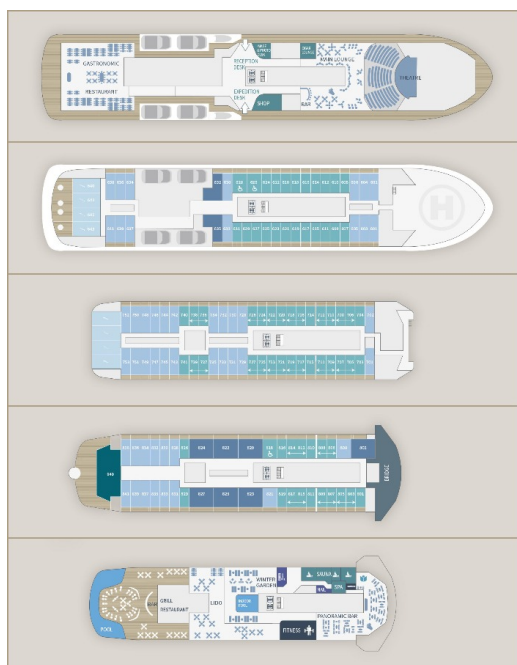
*Small Ships, Big Adventures*

**0800 945 3327** (within New Zealand) | +64 (0) 3 365 1355 | **1800 107 715** (within Australia)

info@wildearth-travel.com | **wildearth-travel.com**



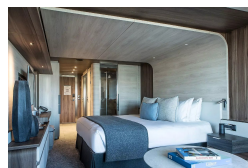
## INSIDE YOUR SHIP



Deluxe Suite Deck 6



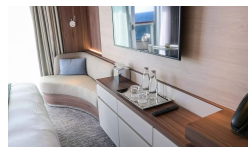
Deluxe Suite Deck 8



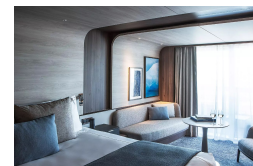
Owner's Suite



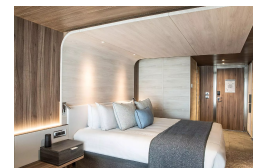
Prestige Stateroom Deck 7



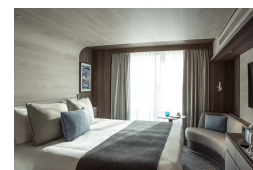
Deluxe Suite Deck 7



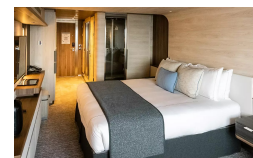
Grand Prestige Suite



Prestige Stateroom Deck 6



Prestige Stateroom Deck 8





# Wild Earth Travel

*Small Ships, Big Adventures*

**wildearth-travel.com**

**info@wildearth-travel.com**

## PRICING

**17-Mar-2026 to 06-Apr-2026**

|                                  |                     |
|----------------------------------|---------------------|
| <b>Prestige Stateroom Deck 6</b> | <b>21120 AUD pp</b> |
| <b>Prestige Stateroom Deck 7</b> | <b>21540 AUD pp</b> |
| <b>Prestige Stateroom Deck 8</b> | <b>21950 AUD pp</b> |
| <b>Deluxe Suite Deck 6</b>       | <b>22570 AUD pp</b> |
| <b>Deluxe Suite Deck 7</b>       | <b>23620 AUD pp</b> |
| <b>Deluxe Suite Deck 8</b>       | <b>24460 AUD pp</b> |
| <b>Prestige Suite Deck 7</b>     | <b>31540 AUD pp</b> |
| <b>Prestige Suite Deck 8</b>     | <b>32580 AUD pp</b> |
| <b>Grand Prestige Suite</b>      | <b>33620 AUD pp</b> |
| <b>Privilege Suite Deck 8</b>    | <b>35710 AUD pp</b> |
| <b>Suite Duplex</b>              | <b>49250 AUD pp</b> |
| <b>Owner's Suite</b>             | <b>76210 AUD pp</b> |



Wild Earth Travel  
*Small Ships, Big Adventures*

**0800 945 3327** (within New Zealand) | +64 (0) 3 365 1355 | **1800 107 715** (within Australia)

info@wildearth-travel.com | **wildearth-travel.com**





# Wild Earth Travel

*Small Ships, Big Adventures*

**wildearth-travel.com**

**info@wildearth-travel.com**

## SPECIAL OFFERS

Online prices reflect the current brochure fare savings of up to 30%. Prices may change based on demand. Terms and conditions apply. This special offer is subject to availability. Please contact us for more details.

**Wild Earth Travel**

*Small Ships, Big Adventures*

**0800 945 3327** (within New Zealand) | +64 (0) 3 365 1355 | **1800 107 715** (within Australia)

info@wildearth-travel.com | **wildearth-travel.com**