

# Wild Earth Travel

*Small Ships, Big Adventures*

**wildearth-travel.com**

**info@wildearth-travel.com**

## NORWEGIAN ROUND VOYAGE

Twelve days - a thousand memories

Get close to the Norwegian nature and communities on board Havila's coastal express. Every single nautical mile along the coastal cruise from Bergen to Kirkenes and back is filled with new experiences. The mountains are immutable, but the weather and the light change constantly, transforming the colours and appearance of the landscape. Here, you will encounter the soft grey of the rain, the crackling green of the Northern Lights or the golden glow of the midnight sun. Along the coast, tiny fishing villages shelter from the fierce Atlantic breakers, while larger coastal towns nestle in the narrow space between wild mountains and the seashore.



### ITINERARY

Day 1 Port: Bergen

The journey starts in Bergen, the capital of western Norway, with the colourful and UNESCO-listed warehouses in Bryggen. Take the funicular railway,

Wild Earth Travel

*Small Ships, Big Adventures*

**0800 945 3327** (within New Zealand) | +64 (0) 3 365 1355 | **1800 107 715** (within Australia)

info@wildearth-travel.com | wildearth-travel.com

# Wild Earth Travel

*Small Ships, Big Adventures*



**wildearth-travel.com**

**info@wildearth-travel.com**

Fløibanen, up to one of the lookout points, sample the seafood at the fish market or take a stroll through the narrow streets and along the quays of the lively harbour. Bergen is the gateway to the Norwegian fjords and the start of your coastal adventure.

## Day 2 Ports: Florø-Måløy-Torvik-Ålesund-Geiranger\*/Hjørundfjorden\*\*-Ålesund-Molde

After the first night on board, you can start your day by waving to the Havila Voyages headquarters just off Torvik. Ålesund, is renowned for its art nouveau architecture with beautiful brick houses and warehouses. In the summer, you can continue to the UNESCO World Heritage Site of Geiranger Fjord, which has steep mountainsides and dramatic waterfalls.

\*Geiranger visited 01.06-31.08

\*\*Hjørundfjorden/Urke visited 01.09-31.10

## Day 3 Ports: Kristiansund - Trondheim - Rørvik

It is morning when we dock in the historic city of Trondheim, which was founded over a thousand years ago. Nidaros Cathedral is the landmark of the city; it is Norway's national shrine and one of the largest cathedrals in Northern Europe. After our visit here, the voyage continues out into the fjord, into an abundant archipelago and heads for northern Norway.

## Day 4 Ports: Brønnøysund - Sandnessjøen - Nesna - Ørnes - Bodø - Stamsund - Svolvær

On this stretch, we mark crossing the Arctic Circle with a ceremony and continue onward into the Arctic regions. It means midnight sun in the summer, while winter days are merely a shade less dark than night-time and, possibly, Northern Lights in the evenings. Nature is powerful with northern Scandinavia's largest glacier, the world's strongest tidal current and encounters with the majestic sea eagle. In the evening, Lofoten's fishing villages, steep mountains and Vikings await.

## Day 5 Ports: Stokmarknes - Sortland - Risøyhamn - Harstad - Finnsnes - Tromsø - Skjervøy

The voyage continues on through narrow fjords and past wild mountains to Tromsø, a city characterised by hunting and fishing, polar expeditions and courage. Now you have also reached the land of the Sami, Norway's indigenous people. Meeting the Sami and their reindeer while hearing about the Sami culture is a unique experience you will remember.

## Day 6 Ports: Hammerfest - Havøysund - Honningsvåg - Kjøllefjord - Mehamn - Berlevåg

As far north as you can get - by land and sea. For many, the visit to the North Cape is a high point and a goal for voyages along the Norwegian coast. Up here in the polar landscape, nature is at its harshest and most desolate, but between bare plains and rugged cliffs people cling on and reap nature's bounty. You can also have a taste of the catch. How about some king crab?

## Dag 7 Ports: Båtsfjord - Vardø - Vadsø - Kirkenes

You are now as far east on your voyage as you can go. The border with Russia is only a few kilometres away, and the road signs in Kirkenes are in Norwegian and Russian. You can go as far as the border on one of our excursions, or how about a visit to the Snowhotel where everything is made of ice and snow?

## Day 8 Ports: Mehamn - Kjøllefjord - Honningsvåg - Havøysund - Hammerfest - Øksfjord - Skjervøy - Tromsø

The polar landscape changes as we sail towards the west and south again. The great expanses are replaced by steep peaks, and in the evening we sail into Tromsø. You can take a stroll in the midnight sun or under the Northern Lights and explore the nightlife of the city dubbed "The Paris of the North".

## Day 9 Finnsnes - Harstad - Risøyhamn - Sortland - Stokmarknes - Svolvær - Stamsund

We return to the wild, idyllic Lofoten Islands. Beneath the jagged mountains lie chalky white sandy beaches and fishing villages with a vibrant fishing

Wild Earth Travel

*Small Ships, Big Adventures*

**0800 945 3327** (within New Zealand) | +64 (0) 3 365 1355 | **1800 107 715** (within Australia)

info@wildearth-travel.com | wildearth-travel.com



# Wild Earth Travel

*Small Ships, Big Adventures*



**wildearth-travel.com**

**info@wildearth-travel.com**

industry and locals using the coastal ships for everyday trips and transport. If the weather permits, we will enter the narrow Trollfjord. There is a strong possibility of spotting sea eagles here.

**Day 10 Bodø - Ørnes - Sandnessjøen - Brønnøysund - Rørvik**

Now we have come so far south that we're crossing the Arctic Circle and sailing away from the polar night and the sunlit nights. But you can still see the Northern Lights in the winter, and it is never completely dark during the summer nights. Here you sail past a myriad of small islands, islets and skerries and past the special mountain, Torgatten, which has a hole in the middle. If you wish, you can also go on the trip to the mountain and enter the hole.

**Day 11 Trondheim - Kristiansund - Molde - Ålesund**

We sail through the wide Trondheim fjord that is bounded by rolling farmland on both sides and return to the coast and the open sea. You can disembark in Kristiansund and be driven along the Atlantic Ocean Road, which has been called the world's most beautiful drive. The road meanders along islets and skerries, and afterwards you can re-embark in Molde.

**Day 12 Torvik - Måløy - Florø - Bergen**

The last day of the tour takes you through a diverse coastal landscape of bare rocky mountains and a maze of sounds and waterways between many islands. The great fjords and glaciers are situated inland. Bergen awaits at the end of the voyage. We hope you have many good memories from your journey along the Norwegian coast with Havila Voyages, and we look forward to seeing you again.

**Please Note:**

Itineraries are subject to change.

**Wild Earth Travel**  
*Small Ships, Big Adventures*

**0800 945 3327** (within New Zealand) | +64 (0) 3 365 1355 | **1800 107 715** (within Australia)

info@wildearth-travel.com | **wildearth-travel.com**

# Wild Earth Travel

*Small Ships, Big Adventures*

**wildearth-travel.com**

**info@wildearth-travel.com**

## YOUR SHIP: HAVILA

<b>YOUR SHIP:</b>	<b>Havila</b>
<b>VESSEL TYPE:</b>	<b>Expedition Ship</b>
<b>LENGTH:</b>	<b>124.1 metres</b>
<b>PASSENGER CAPACITY:</b>	<b>640</b>
<b>BUILT/REFURBISHED:</b>	<b>2020</b>

We invite you onboard our ships with decor that reflects Norwegian landscapes including the sea, the sky, mountains and glaciers. Natural materials and Nordic design creates a warm, genuine and unpretentious atmosphere, in which you are sure to feel at ease. We have made sure that you can enjoy the scenery gliding by outside from the ship's many public areas. Comfortable seats and panoramic windows give you the best possible views of the Norwegian coastline.

### Promenade deck and viewpoint

If you want to feel the wind in your hair and inhale some good sea air, there's the outer deck and the viewpoint in the bow, or the promenade on Deck 8, that is long enough for a proper walk.

### Observation lounge

The observation lounge on the top deck, Deck 9, has recliners under a glass roof, where you can look at the Northern Lights, the star-studded night sky or the midnight sun during the summer.

### The gym

The machines in the gym are arranged in front of the window so that you can train and watch the passing landscape at the same

time.

### Shopping

Find unique clothes, books or local specialities in the shop on Deck 6, in the middle of the ship.

### Jacuzzi

Enjoy the powerful jets of hot water in the jacuzzi on the quarterdeck while looking out over the mountains and fjords.

### Conference Hall

Information about the journey, the places we are passing, and Norwegian culture and history can be obtained in the conference hall.

### Sauna

There is a sauna on the ships in the cloakroom area attached to the jacuzzis on Deck 8.

### Relax chairs

Separate room with relax chairs for those who are not travelling far and do not need their own cabin.

### Cabins and suites

Large cabins with Norwegian quality and design, where materials and colours reflect the landscape through which you will be sailing.

### Cafes and restaurants

The ship has two restaurants and a cafe. The menus feature locally sourced food and the best that Norway has to offer.

Wild Earth Travel

*Small Ships, Big Adventures*

**0800 945 3327** (within New Zealand) | +64 (0) 3 365 1355 | **1800 107 715** (within Australia)

info@wildearth-travel.com | **wildearth-travel.com**





# Wild Earth Travel

*Small Ships, Big Adventures*



**wildearth-travel.com**

**info@wildearth-travel.com**



s to offer.



## Wild Earth Travel

*Small Ships, Big Adventures*

**0800 945 3327** (within New Zealand) | +64 (0) 3 365 1355 | **1800 107 715** (within Australia)

info@wildearth-travel.com | **wildearth-travel.com**

# Wild Earth Travel

*Small Ships, Big Adventures*

[wildearth-travel.com](http://wildearth-travel.com)

[info@wildearth-travel.com](mailto:info@wildearth-travel.com)

## INSIDE YOUR SHIP

### OUR NEW ECO-FRIENDLY SHIP

Enjoy silence, variation and comfort on board  
Havila Voyages. With our ships you can explore the  
world's most beautiful coast from the world's most  
eco-friendly vessels.

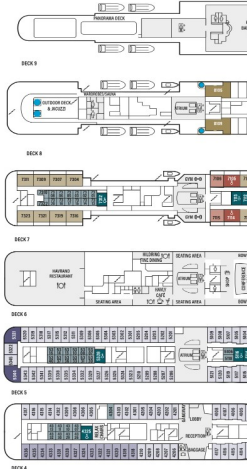
#### SHIP'S SPECIFICATIONS

##### HAVILA CAPELLA & HAVILA CASTOR

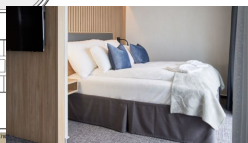
TOTAL PASSENGERS ..... 174 (148 SEATED)  
CABIN CAPACITY ..... 9  
LENGTH ..... 121.4  
BEAM ..... 22.8  
GROSS TONNAGE ..... 18 174 TONNES  
SPEED ..... 13.5 KNOTS  
RANGE ..... 2400  
HATCHES ..... 10



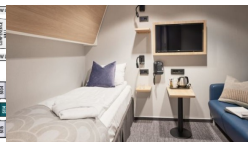
- DINING / PUBLIC SPACES
- INTERIOR
- INTERIOR ACCESSIBLE
- SEAVIEW SUPERIOR DOUBLE
- SEAVIEW SUPERIOR TWIN
- SEAVIEW DELUXE
- SEAVIEW SUPERIOR ACCESSIBLE
- PANORAMIC SUPERIOR
- PANORAMIC DELUXE
- BALCONY DELUXE
- BALCONY DELUXE ACCESSIBLE
- JUNIOR SUITES
- LIGHTHOUSE SUITES



Balcony Deluxe & Balcony Accessible. From



Interior. From



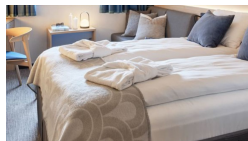
Lighthouse Suite. From



Seaview Deluxe. From



Seaview Superior. From



Interior Accessible. From



Junior Suite with Balcony. From



Panoramic Superior/Deluxe. From



Seaview Superior Accessible. From



Wild Earth Travel  
*Small Ships, Big Adventures*

0800 945 3327 (within New Zealand) | +64 (0) 3 365 1355 | 1800 107 715 (within Australia)

[info@wildearth-travel.com](mailto:info@wildearth-travel.com) | [wildearth-travel.com](http://wildearth-travel.com)



# Wild Earth Travel

*Small Ships, Big Adventures*

**wildearth-travel.com**

**info@wildearth-travel.com**

## PRICING

### 28-Sep-2025 to 09-Oct-2025

Seaview Superior. From	3253 EUR pp
------------------------	-------------

### 09-Oct-2025 to 20-Oct-2025

Interior. From	1830 EUR pp
----------------	-------------

Seaview Superior Double	3081 EUR pp
-------------------------	-------------

More Departure Dates Available	0 pp
--------------------------------	------

### 09-Dec-2025 to 20-Dec-2025

Interior. From	1481 EUR pp
----------------	-------------

More Cabin Categories Available	0 pp
---------------------------------	------

More Departure Dates Available	0 pp
--------------------------------	------

### 28-Dec-2025 to 08-Jan-2026

Interior. From	1565 EUR pp
----------------	-------------

Seaview Superior from	2937 EUR pp
-----------------------	-------------

More Departure Dates Available	0 pp
--------------------------------	------

### 03-Apr-2026 to 14-Apr-2026

Seaview Superior. From	2528 EUR pp
------------------------	-------------

Lighthouse Suite. From	0 pp
------------------------	------

Interior. From	0 pp
----------------	------

Interior Accessible. From	0 pp
---------------------------	------

Seaview Superior Accessible. From	0 pp
--------------------------------------	------

Panoramic Superior/Deluxe. From	0 pp
------------------------------------	------

Junior Suite with Balcony. From	0 pp
---------------------------------	------

Seaview Deluxe. From	0 pp
----------------------	------

Balcony Deluxe & Balcony Accessible. From	0 pp
--	------

Wild Earth Travel

*Small Ships, Big Adventures*

**0800 945 3327** (within New Zealand) | +64 (0) 3 365 1355 | **1800 107 715** (within Australia)

info@wildearth-travel.com | wildearth-travel.com