

Wild Earth Travel

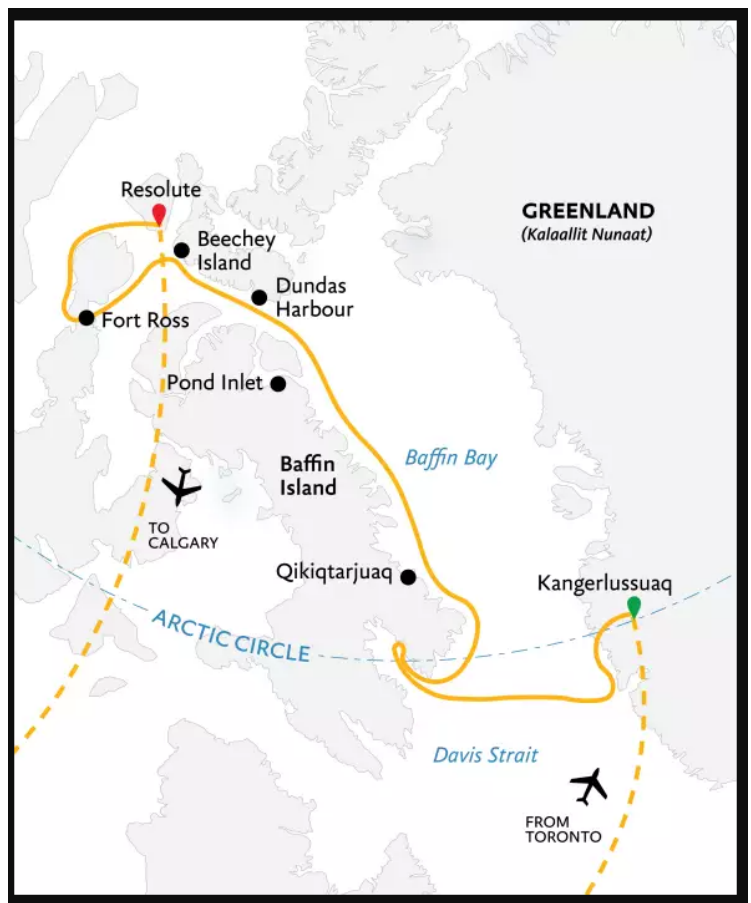
Small Ships, Big Adventures

wildearth-travel.com

info@wildearth-travel.com

NORTHWEST PASSAGE THE LEGENDARY ARCTIC SEA ROUTE

Winding your way through the icy channels of the legendary Northwest Passage is history brought to life during this expedition in the Canadian High Arctic and Greenland. On this compelling 17-day journey aboard our game-changing new vessel Ultramarine, passengers retrace the steps of the intrepid Franklin Expedition, which left the shores of England in 1845 in search of the last unexplored section of the Northwest Passage--only to become permanently icebound. Its discovery more than a century and a half later by Norwegian Roald Amundsen was a much-celebrated moment in polar history. On Ultramarine, guests benefit from two twin-engine helicopters that will provide spectacular aerial views of the Arctic landscape, the most extensive portfolio of Adventure Options in the industry, more outdoor wildlife viewing spaces than any other expedition ship its size, and 20 quick-launching Zodiacs to get you closer to ancient glaciers, dramatic fjords and towering icebergs. Explore colorful Inuit villages, and shop for traditional Inuit handicrafts. Hike the endless Arctic backdrop and marvel at the vast, colorful tundra. Keep your eyes peeled for the elusive and majestic creatures that make their home in this wilderness, such as whales, walrus, muskoxen and polar bears. Come aboard Ultramarine for this immersive journey along the legendary Arctic sea route, and return home with memories permanently etched in your heart.



Wild Earth Travel

Small Ships, Big Adventures

0800 945 3327 (within New Zealand) | +64 (0) 3 365 1355 | **1800 107 715** (within Australia)

info@wildearth-travel.com | **wildearth-travel.com**



ITINERARY

Day 1 Arrive in Toronto, Canada

Your Arctic expedition begins in Toronto. Explore this vibrant city on your own before spending the night enjoying the comfort and amenities of your designated hotel.

Day 2 Fly to Kangerlussuaq, Greenland and Embark

After breakfast, board your charter flight to Kangerlussuaq, a small community nestled deep inside a 118 mile (190 km) long fjord. Enjoy your first Zodiac ride as you're transferred from shore to ship. Out on deck, take in your new surroundings before you set sail on your Arctic adventure.

Days 3 and 4 Exploring West Greenland

Cruising around the remote regions of Greenland and the Canadian Arctic aboard Ultramarine, the newest ship in our fleet, you'll navigate the same icy inlets, channels and bays that fascinated legendary explorers of long ago. Designed to give polar adventurers unprecedented access to the hardest-to-reach places on the planet--and equipped with two onboard twin-engine helicopters for unparalleled access to areas only Quark Expeditions can bring you--this one-of-a-kind ship will take you beyond the familiar in polar exploration. Throughout your journey, your Expedition Team will keep an eye toward immersing you in the best the Arctic has to offer at the top of the world. Locals call Maniitsoq the Venice of Greenland, as it's situated in an archipelago intersected by natural canals. Soaring, snow-capped mountains surround the small, rocky town, whose name means "the uneven place." Playful humpback whales spend summer in the waters around here. The Greenlandic capital of Nuuk is a haven for history and culture lovers. See for yourself the unique and thriving culture of contemporary Greenland that mingles the ancient with the modern in surprising and wonderful ways. Stroll down to the waterfront to see the Hans Egede Church and Hans Egede statue, named for the missionary who established the settlement in 1728. Marvel at the famous remains of 500-year-old fully dressed mummies, discovered under a rock outcrop in 1972 by two brothers out hunting, at the Greenland National Museum. The Nuuk Art Museum and Katuaq Culture Centre are also worth visiting.

Day 5 Cruising

Say goodbye to Greenland's shores as you traverse the Davis Strait in pursuit of the Canadian Arctic. Presentations by on-board experts will prepare you for the adventures that lie ahead.

Days 6 to 15 Exploring Canada's High Arctic

Visit towering fjords, historical sites and Inuit communities as you follow in the footsteps of famous explorers from long ago in the Canadian High Arctic. At the southern tip of the Cumberland Sound, you'll visit Cape Mercy, which was named by British explorer John Davis (yes, he of the Davis Strait), who sailed through it in 1585. This is the site of an old Distant Early Warning Line installation, dating back to the Cold War. These and many other stations were set up to detect Soviet bombers. It's an ideal spot to go ashore for a hike. As icebergs travel down the Davis Strait, they're naturally trapped at Qikiqtarjuaq (formerly known as Broughton Island). The icy waters here are also home to ring and harp seals. A hike up to the hilltop inuksuk rewards with spectacular views of the community. Inuksuks are stone figures or cairns that traditionally call attention to the location for navigation, abundant harvesting or spiritual significance. Cruising further north along the mountainous east shore of Baffin Island, we'll approach Isabella Bay, an important summer and fall feeding area for the largest concentration of bowhead whales in Canada. Bowheads are a truly remarkable arctic leviathan that research has revealed may live more than 200 years of age - the oldest mammal. At the northern tip of Baffin Island, near the eastern entrance to the Northwest Passage, is the Inuit hamlet of Pond Inlet, surrounded by scenic mountains, fjords, glaciers and icebergs. Many in the community still follow a nomadic lifestyle and hunt for their food. At the top of Baffin Island sits Lancaster Sound, a true arctic oasis. Known by the Inuit and their predecessors for thousands of years, this channel and the surrounding lands are extremely rich in wildlife and history, both indigenous and European. The area around Lancaster Sound affords several hiking opportunities. At Dundas Harbour, on Devon Island, you'll visit an abandoned beachside outpost of the Royal Canadian Mounted Police. At nearby Croker Bay, cruise in a Zodiac (at a safe distance) along the face of an actively calving glacier. Your Expedition Team will also keep its eyes peeled for walrus that are known to visit the bay. Farther west, some of the best ancient Thule remains in the Arctic are at Radstock Bay, beside the soaring Caswell Towers. At the western end of Devon Island, the windswept Beechey Island is steeped in history. Named after famed British explorer Frederick William Beechey, it's a Canadian National Historic Site. You'll visit the small marked graves of three crew members who died during Sir John Franklin's tragic 1845-46 expedition.



Over 150 years later, Roald Amundsen landed here in 1903, during the first successful voyage by ship through the Northwest Passage. Sailing down the east coast of Somerset Island, you may be fortunate to spot beluga whales and if you're very fortunate, narwhals, as they feed at Creswell Bay. An Important Bird Area, the bay also attracts such species as black-bellied plovers, king eiders and white-rumped sandpipers. You'll also have time to explore Fort Ross, where the Hudson's Bay Company established a now-abandoned trading post in 1937. At the midpoint of the Bellot Strait, the narrow channel that separates Somerset Island from mainland North America, you'll reach the northernmost area of the continental landmass, Zenith Point.

Day 16 Disembark in Resolute, Canada and Fly to Calgary

After disembarking in Resolute, you'll be transferred to your charter flight to Calgary, where you'll spend the night at your included hotel.

Day 17 Depart Calgary

Today, make your way to the airport to catch your homeward flights, or spend the day exploring this unique Western Canadian city.

Please Note:

Itineraries are subject to change.



Wild Earth Travel

Small Ships, Big Adventures

wildearth-travel.com

info@wildearth-travel.com

YOUR SHIP: OCEAN EXPLORER

| | |
|----------------------------|-------------------------|
| YOUR SHIP: | Ocean Explorer |
| VESSEL TYPE: | Polar Expedition |
| LENGTH: | 342 ft (104.4 m) |
| PASSENGER CAPACITY: | 138 |
| BUILT/REFURBISHED: | 2021 |

Ocean Explorer, the newest addition to our fleet, is modern, elegant and purpose-built for polar exploration. The 138-passenger vessel has been designed with the latest in expedition ship technology. One of the ship's key features is the ULSTEIN X-BOW®, a marine engineering innovation that ensures a comfortable and smooth sailing experience thanks to the inverted bow. Located at the bow is the two-story, light-filled library, which introduces a welcome airiness to the expedition ship.

Spacious cabins feature a modern, bespoke Scandinavian design and almost all have verandas. Guests can relax and find comfort in the spacious gym, sauna with large windows, and two outdoor Jacuzzis.

Ocean Explorer features ample outdoor viewing areas and multi-height outer decks, which are ideal for long-view photography and wildlife viewing. The vessel is equipped with a fleet of 15 Zodiacs that enable guests to get off the ship quickly and safely for off-ship adventures. In addition to the well-appointed and spacious public areas, Ocean Explorer has an industry-leading mix of sustainability systems, including fuel-efficient Rolls Royce engines.

Two Story Library

Light-filled interior library--at the bow of the ship-- allows guests to sit and relax indoors while taking in the surrounding polar landscapes from their choice of two levels.

Leading Edge Sustainability

With the latest sustainability technology in polar expedition, the ship features fuel-efficient Rolls-Royce engines and the ground-breaking MAGS gasification system that converts waste into energy, eliminating the environmental impact of waste transportation.

ULSTEIN X-Bow

In addition to forming the double-story library, the innovative X-Bow design ensures calm, energy-efficient sailing in rough waters.

High Observation Outdoor Decks

Observation areas on Decks 7 and 8 allow for higher, longer-view landscape photography while contending with less sea spray.

Quiet and Comfortable

Spacious and luxurious cabins ensure your quiet ambience with no sound disturbance from adjoining cabins--and almost all cabins feature a balcony for outdoor viewing.

Stunning Interior Design

Each interior element was carefully hand-picked by designers for you to enjoy, from the dramatic two-story forward lounge, the floor-to-ceiling glass refuge in the library, to the grand fixtures and luxe furnishings throughout the ship.

Main Dining Room

Wild Earth Travel
Small Ships, Big Adventures

0800 945 3327 (within New Zealand) | +64 (0) 3 365 1355 | **1800 107 715** (within Australia)

info@wildearth-travel.com | wildearth-travel.com

Wild Earth Travel

Small Ships, Big Adventures



wildearth-travel.com

info@wildearth-travel.com

Contemporary meets cozy in this modern dining room with its stylish lighting and contemporary art. Located on Deck 5, the Main Dining Room seats 144 guests, and features expansive floor-to-ceiling windows that open onto the spectacular polar wilderness.

Private Dining Room

Tasteful and intimate. This stylish, private dining room on deck 5 provides a relaxed dining experience--with views of the polar landscape--for up to 36 guests.

The Latitude Bar

A popular social hub on Deck 5, the beautifully-lit Latitude Bar--with its lush sofas and faux marble-topped end tables--is large enough to seat 46 and is ideal for enjoying a quiet drink on your own or hanging out with friends.

Library

Located on Deck 6 at the top of the gorgeous atrium staircase, this beautiful Library with floor-to-ceiling glass, accommodates up to 47 people

Dry Sauna

After a day of exciting off-ship adventure, guests can relax on the sauna's traditional wood benches while gazing at the polar wilderness just outside the large sauna windows. Accommodates 15 people on Deck 7.

Fitness Center

Stay fit with the latest work-out equipment in the Fitness Center on Deck 7.

Jacuzzis

Two outdoor Jacuzzis on deck 7, at the ship's stern, mean you can relax alfresco while soaking up the breath-taking polar views.

Observation Lounge

This stylish lounge at the top of the ship guarantees incredible views. Guests also frequent this spacious lookout on Deck 8 to enjoy cocktails and conversation with fellow travelers. Seats 63.



. Seats 63.

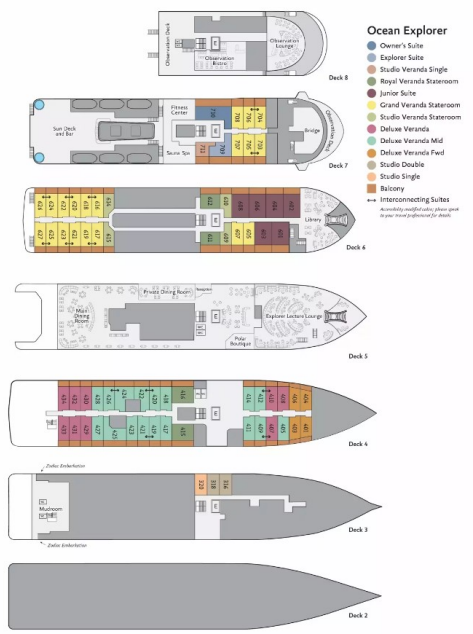


Wild Earth Travel
Small Ships, Big Adventures

wildearth-travel.com

info@wildearth-travel.com

INSIDE YOUR SHIP



Balcony Suite. From



Deluxe Balcony Suite. From



Deluxe Veranda Forward



Explorer Suite. From



Explorer Triple. From



Junior Suite



Owner's Suite. From



Owners Suite





Wild Earth Travel

Small Ships, Big Adventures

wildearth-travel.com

info@wildearth-travel.com

PRICING

26-Aug-2025 to 11-Sep-2025

| | |
|----------------------------|--------------|
| Explorer Triple. From | 18900 AUD pp |
| Explorer Suite. From | 24948 AUD pp |
| Balcony Suite. From | 27342 AUD pp |
| Deluxe Balcony Suite. From | 32256 AUD pp |
| Terrace Suite. From | 33453 AUD pp |
| Solo Panorama. From | 34650 AUD pp |
| Penthouse Suite. From | 34650 AUD pp |
| Owner's Suite. From | 44352 AUD pp |
| Ultra Suite. From | 49077 AUD pp |

07-Aug-2026 to 23-Aug-2026

| | |
|------------------------|---------------|
| Studio Single | 45095 AUD pp |
| Studio Veranda Single | 48695 AUD pp |
| Deluxe Veranda Forward | 58302 AUD pp |
| Veranda Stateroom | 61532 AUD pp |
| Veranda Suite | 65272 AUD pp |
| Junior Suite | 90190 AUD pp |
| Penthouse Suite | 104590 AUD pp |
| Owners Suite | 111790 AUD pp |

17-Aug-2026 to 02-Sep-2026

| | |
|------------------------|--------------|
| Deluxe Veranda Forward | 31616 AUD pp |
| Veranda Stateroom | 33193 AUD pp |
| Veranda Suite | 35019 AUD pp |
| Studio Single | 40579 AUD pp |
| Junior Suite | 40579 AUD pp |
| Studio Veranda Single | 43568 AUD pp |
| Penthouse Suite | 46556 AUD pp |
| Owners Suite | 49544 AUD pp |

Wild Earth Travel
Small Ships, Big Adventures

0800 945 3327 (within New Zealand) | +64 (0) 3 365 1355 | **1800 107 715** (within Australia)

info@wildearth-travel.com | wildearth-travel.com



SPECIAL OFFERS

Online prices reflect current special offers and are subject to change based on demand. This promotion is available for a limited time and subject to availability. Terms and conditions apply. For more information, please contact us.

Optional extras & upgrades

Optional tours and excursions available. Please contact us for more details.

Heli Landing

You will be transferred from Ultramarine's heli-decks via our two twin-engine helicopters to a pre-selected Arctic destination. You'll have time to explore the location, accompanied by Quark Expeditions team members, after which you'll be picked up by the helicopters in the same location and returned to Ultramarine. Note: heli-landings are dependent on weather conditions and logistics.

Sea Kayaking

Positioning yourself in the seat of a kayak is one of the most intimate ways travelers can connect with the polar regions—at water level, up close, where you can touch and feel every polar sensation imaginable. The Sea Kayak Program enables a small group of like-minded individuals to forge bonds as they explore fjords, glacial faces or mazes of sea ice.