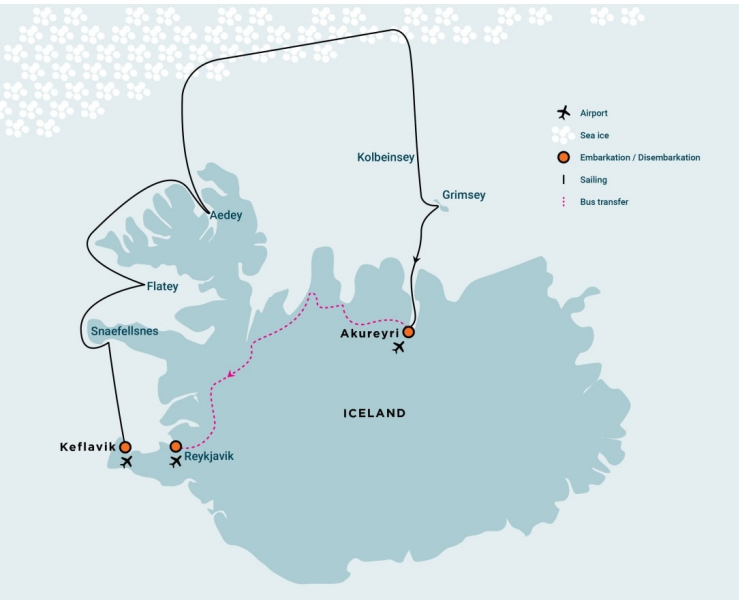




NORTHWEST ICELAND EXPLORER - INTO THE PACK ICE - EXPEDITION CRUISE

Enter a world of Norse mythology, wild, dramatic coastlines, and seabirds in their thousands as you voyage from Iceland, crossing the Arctic Circle and encountering the fringes of the sea ice, with good possibilities of viewing seals, whales, and a lonely polar bear. Seabirds will be your constant companions as you visit islands, skerries, and fjords before landfall in Akureyri, Iceland.



ITINERARY

Day 1: The start of an Arctic adventure

In the late afternoon, you will board m/v Hondius in the port of Keflavik, a short distance from the International Airport. With the port behind us, we sail north into the bay of Faxaflói and proceed to the Snæfellsnes Peninsula while looking for whales in this large bay.

Day 2 - 7: Ice caps and volcanoes

Ice caps and volcanoes

We land in Breidavík at Arnarstapi, with Snæfellsjökull, a glacier-capped volcano in the background. We will walk southward, along cliffs with seabirds,



to Hellnar, where we embark the ship again. We may also proceed to Snaefellsjokull, where Jule Vernes: Journey to the center of the Earth began. In the evening, we will again look for whales northwest of the peninsula.

A land of islands, skerries and Norse legends

We sail in the broad and shallow bay of Breidafjörður, peppered with hundreds of islands and skerries, and may glimpse some white-tailed eagles. We will then land on Flatey and explore its traditional fishing village and the church with paintings by the Spanish-Icelandic artist Baltasar. Black guillemots and vast colonies of puffins breed along the shores, and red-necked phalaropes are common in ponds just inland.

We will pay a visit to Klófnungur, a diminutive island featuring a lighthouse and extensive breeding colonies of shags, fulmars, and great black-backed gulls. In the evening, we will sail by the impressive Latrabjarg, featuring Iceland's biggest seabird colonies.

On the lookout for whales and eider ducks

Sailing into impressive Skutulsfjörður, home to the town of Isafjörður, we plan a visit to Aedey, where an Icelandic family keeps an eider duck farm where the many hundreds of birds can breed protected entirely and where, at the end of the breeding season, all eiderdown is collected for trade. At the shores of the island we also meet breeding puffins. In the afternoon, we may sail into Jokulfirdir or directly out of the fjord, looking again for whales, while we sail northwest and pass the Arctic Circle.

At the fringes of the sea ice

North of Iceland, in the fringes of the southward-moving sea ice, we sail northeast with our ice-rated vessel. We look two days for harp and hooded seals, which sometimes frequent the area in great numbers. The presence of a lonely polar bear can not be discounted, as they sometimes reach Iceland's shores. Near and along the sea ice, we will see whales and seabirds as they migrate and forage along the productive edge of the sea ice. You will be in an impressive sea-scape with, to the west, sea ice as far as you see. This is a wild Arctic environment, constantly in motion and always changing.

Crossing the Arctic Circle once more

We find ourselves sailing southward. In the early morning, we will pass Kolbeinsey, a tiny uninhabited islet rapidly being eroded by the fearsome surrounding ocean. Later, we will land on Grimsey, a small island that straddles the Arctic Circle. Grimsey features a small but friendly fishing village

and is home to colonies of kittiwakes, razorbills, puffins, fulmars, and Arctic terns. In the evening, at the mouth of Eyafjörður, we may again see some whales.

Day 8: Journey ends in Akureyri

With our journey ending, you disembark in Akureyri, where, on request, you can transfer by chartered bus (a six-hour drive that you must book in advance) to the bus stop Harpa Concert Hall and Conference Centre at Austurbakki, Reykjavik. While your time in the Arctic may be over, your memories and experiences will stay with you forever!

Please note:

All itineraries are for guidance only. Programs may vary depending on ice, weather, and wildlife conditions. Landings are subject to site availabilities, permissions, and environmental concerns per AECO regulations. Official sailing plans and landing slots are scheduled with AECO prior to the start of the season, but the expedition leader determines the final plan. Flexibility is paramount for expedition cruises. The average cruising speed of our vessel is 10.5 knots.



Wild Earth Travel

Small Ships, Big Adventures

wildearth-travel.com

info@wildearth-travel.com

YOUR SHIP: HONDIOUS

YOUR SHIP:	Hondius
VESSEL TYPE:	Polar Class Expedition Ship
LENGTH:	107.6 metres
PASSENGER CAPACITY:	170
BUILT/REFURBISHED:	2019

Hondius is the first-registered Polar Class 6 vessel in the world, meeting the latest and highest Lloyd's Register standards for ice-strengthened cruise ships. Surpassing the requirements of the Polar Code adopted by the International Maritime Organization (IMO), Hondius represents the most flexible, advanced, innovative touring vessel in the polar regions, thoroughly optimized for exploratory voyages that provide you the utmost first-hand contact with the Arctic and Antarctica.

Happier polar passengers, healthier polar environment

Not only will the numerous amenities and on-board entertainments help make your Hondius voyage truly memorable, this ship also gives you the peace of mind that comes with choosing one of the most environmentally friendly vessel on the polar seas. Hondius uses LED lighting, steam heating, bio-degradable paints and lubricants, and state-of-the-art power management systems that keep fuel consumption and CO2 levels minimal. This means that when you sail aboard Hondius, you get to enjoy the exotic landscapes and wildlife as much as possible while impacting them as little as possible.

Hotel comfort, expedition class

Please be aware that a small number of cabins may have a partially obstructed view due to the size of the windows and the design requirements of the ship. For example, some windows may be partly obstructed in the lower half by a gangway. The best view is always on the outer deck or the bridge. Hondius offers high-quality accommodation for 170 passengers in six grand suites with balconies (27 square meters, 291 square feet), eight junior suites (19 to 20 square meters, 205 to 215 square feet), eight superior cabins (20 to 21 square meters, 215 to 226 square feet), 11 twin deluxe cabins, (19 to 21 square meters, 205 to 226 square feet), 14 twin window cabins (12 to 14 square meters, 129 to 151 square feet) as well as 27 twin porthole cabins, two triple porthole cabins, and four quadruple porthole cabins that vary in size from 12 to 18 square meters, or 129 to 194 square feet. One deck consists of a large observation lounge and separate lecture room, which are reserved for a wide variety of interactive workshops, exhibitions, and performances particular to Hondius. Though elegantly designed in stylish mid-century modern decor, this vessel holds true to Oceanwide's distinctive cozy and informal atmosphere.

Swift & safe ship-to-shore operations

It is our philosophy to keep sea time short so that we can focus instead on fast, effective access to shore and near-shore activities. To give you the maximum contact with the nature and wildlife you traveled so far to see, we employ a tough fleet of rigid-hull inflatable Zodiac boats that guarantee swift and safe landing operations for the passengers. Hondius has two separate gangways and a sheltered indoor Zodiac boarding area

Wild Earth Travel
Small Ships, Big Adventures

0800 945 3327 (within New Zealand) | +64 (0) 3 365 1355 | **1800 107 715** (within Australia)

info@wildearth-travel.com | **wildearth-travel.com**



that can also be used for special outdoor activities, such as kayaking.

The fast, flexible, friendly heart of the polar regions

Our top priority is taking advantage of every wildlife and terrain opportunity as it occurs. To keep our itineraries flexible itineraries and our response time rapid, Hondius is equipped with advanced stabilizers and two main engines capable of powering the vessel up to 15 knots. But Hondius sacrifices no warmth to achieve its keen polar edge: You will have 70 crew and staff members (including expedition and hotel staff) at your service while on board, ensuring that what little time you do spend on the ship you will spend comfortably entertained.

Age and nationality

Passengers on a typical voyage range from in their 30s to their 80s, with the majority usually between 45 65. Our expeditions attract independent travelers from around the globe who are characterized by a strong interest in exploring remote regions. The camaraderie that develops on board is an important part of the Oceanwide experience, and many passenger groups include several nationalities.

What to wear

In keeping with the spirit of expedition, dress on board is informal. Bring casual and comfortable clothing for all activities, and keep in mind that much of the scenery can be appreciated from deck which can be slippery. Bring sturdy shoes with no-slip soles, and make sure your parka is never far away in case one of our crew shouts "Whales!" over the loudspeaker and you have to dash outside in a moment's notice. Opt for layers, as it is comfortably warm aboard the ship though often cold on deck.

How to pay

Refreshments and souvenirs will be charged to your cabin. The

day before departure you can settle your bill with the hotel manager, paying by credit card (Visa or MasterCard) or cash (euro, or in some cases dollar). We cannot, however, accept checks. Though the prices and standard currency on board is in the euro, other currencies may be accepted at the discretion of the hotel manager, at prevailing rates.

Electric current

The electrical supply aboard ship is 220v, 60Hz. Electrical outlets are standard European with two thick round pins, so some passengers may need a 220v/110v converter.

Gratuities

The customary gratuity to the ship's service personnel is made as a blanket contribution at the end of the voyage and is divided among the crew. Tipping is a personal matter, and the amount you wish to give is at your sole discretion. As a generally accepted guideline, we suggest 8 10 euros per passenger per day. It is better for the crew if you give cash.

Non-smoking policy

We have a non-smoking policy inside all our vessels, though you can smoke in certain designated areas. We ask that you please respect the wishes of non-smokers.

Your physical condition

You must be in good overall health and be able to walk several hours per day. The expedition is ship-based and physically not very demanding, but we spend as much time as possible on shore. You are, however, welcome to remain aboard the ship if you prefer. To join most excursions you must be able to get up and down the steep gangway from the ship to the water level to board the Zodiacs. Staff will assist you in and out of the boats, and boarding will become progressively easier with practice, but conditions on shore can be slippery and rocky. Remember, you will be traveling in remote areas without access



Wild Earth Travel

Small Ships, Big Adventures

wildearth-travel.com

info@wildearth-travel.com

to sophisticated medical facilities, so you must not join this expedition if you have a life-threatening condition or need daily medical treatment.



treatment.

Wild Earth Travel
Small Ships, Big Adventures

0800 945 3327 (within New Zealand) | +64 (0) 3 365 1355 | **1800 107 715** (within Australia)

info@wildearth-travel.com | **wildearth-travel.com**

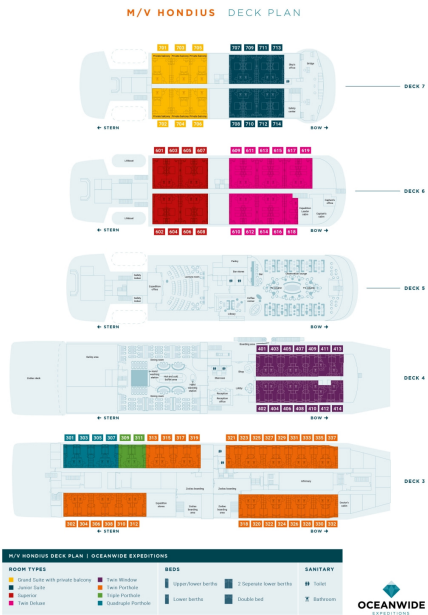


Wild Earth Travel
Small Ships, Big Adventures

wildearth-travel.com

info@wildearth-travel.com

INSIDE YOUR SHIP



Grand Suite with Private Balcony



Junior Suite



Quadruple Porthole



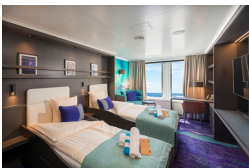
Superior



Triple Porthole



Twin Deluxe



Twin Porthole



Twin Window





Wild Earth Travel
Small Ships, Big Adventures

wildearth-travel.com **info@wildearth-travel.com**

PRICING

29-May-2026 to 05-Jun-2026

Quadruple Porthole	4450 USD pp
Triple Porthole	5550 USD pp
Twin Porthole	6150 USD pp
Twin Window	6700 USD pp
Twin Deluxe	7100 USD pp
Superior	8050 USD pp
Junior Suite	9200 USD pp
Grand Suite with Private Balcony	9950 USD pp

Optional extras & upgrades

Transfer supplement 150 USD

Transfer supplement (T) USD 150 pp for bus shuttle from Akureyri (ship) to Reykjavik (bus stop Harpa concert hall), approx. 6 hours

Wild Earth Travel
Small Ships, Big Adventures

0800 945 3327 (within New Zealand) | +64 (0) 3 365 1355 | **1800 107 715** (within Australia)

info@wildearth-travel.com | **wildearth-travel.com**