



## NORTHERN LIGHTS CRUISE FROM GREENLAND TO CANADA

Embark on a captivating Northern Lights cruise from Greenland to Canada, tracing the historic ice-filled Northwest Passage. This luxurious round trip begins and ends in the vibrant capital of Nuuk, Greenland, and journeys through breathtaking locations like Sisimiut, Disko Bay, and Pond Inlet, eventually taking you to the dramatic Arctic waters of Canada's Nunavut. The cruise offers incredible encounters with varied landscapes and wildlife. Explore Nunavut's Arctic coast, home to polar bears and narwhals, experience Greenland's iconic icebergs, and visit remote Inuit communities with colorful homes. Uncover the heritage of the Ilulissat Icefjord in Disko Bay and delve into the intriguing exploration history in places like Radstock Bay. Take part in a multitude of activities designed for an unforgettable luxury cruise experience. Engage in kayaking with the expedition team, enjoy expert lectures, and sharpen your photography skills. Spend leisurely sea days mingling with fellow travelers, or savor panoramic ocean views from the ship's observation decks, all while soaking in the rich exploration history of this mesmerizing region.



### ITINERARY

#### Days 0 - 1 Pre Cruise & Nuuk

Home to more than a third of Greenlanders, the capital of Nuuk has a thriving cultural scene including the Greenland National Museum, home to the world-renowned Qilakitsoq mummies. Also known by its Danish name of Godthab (Good Hope), Nuuk's bustling harbour features Nuuk Cathedral and colourful wooden houses, alongside modern architecture. Nuuk also serves as a gateway to Inuit experiences and adventures in the surrounding fjords and mountains.



### Day 2 Sisimiut

The northernmost city in Greenland, just above the Arctic Circle, Sisimiut remains remarkably ice free in winter and is known as an adventure sports hub all year round. Inhabited for more than 4,500 years by the Dorset, Thule and eventually the Inuit people, dog sledding remains a vital form of transportation. The area is home to humpback whales and Arctic foxes in their summer coat.

### Day 3 Disko Bay

Known for its Inuit culture, whales and icebergs, Disko Bay is a UNESCO World Heritage Site located in Western Greenland. The bay is also home to the Ilulissat Icefjord, one of the fastest-moving glaciers in the world. First visited by Europeans in 1596, in search of a Northwest Passage to Asia, it has been an Inuit home for millennia. The village of Qeqertarsuaq embodies thriving Inuit traditions, preserving the cultural legacy.

### Day 4 Day at sea

Sea days are rarely dull. Take the time to sit back and let the world go by. The ship's observation decks provide stunning views of the passing ocean. A day at sea gives you the opportunity to mingle with other passengers and share your experiences of this incredible trip or head to our library which is stocked full of reference books. Get an expert's view in one of our on-board lectures or perhaps perfect your photography skills with invaluable advice from our onboard professional photographers.

### Day 5 Pond Inlet, NU

The views of snow-capped mountains have given Pond Inlet in northern Baffin Island the name of Canada's 'jewel of the north' and the area is a prime breeding ground for narwhals - toothed whales with a distinct large tusk. The traditional Inuit community living in the hamlet of Mittimatalik are renowned

for their craft skills from printmaking and stone carving.

### Day 6 Croker Bay

Gracing the eastern high Arctic, Croker Bay, a mesmerising Arctic waterway, carves its way into Devon Island within the vibrant Qikiqtaaluk Region. This deep inlet, an extension of Lancaster Sound and Barrow Strait, unveils a landscape of captivating beauty. The Devon ice cap feeds the huge South Croker Bay Glacier that calves into the bay.

### Day 7 Radstock Bay, NU

This area is closely associated with the exploration of Canada's High Arctic and the Northwest Passage. Much of the Canadian Arctic Archipelago was mapped while searching for the missing crew of British explorer Sir John Franklin's fateful 1845-46 Northwest Passage Expedition. Radstock Bay sits below the mighty Caswall Tower mountain and hides many secrets, with evidence of sledge tracks, camps and food tins that may help reveal what happened.

### Day 7 Beechey Island, NU

Beechey Island Sites, five historical locations in Canada's High Arctic, mark where Sir John Franklin wintered in 1845-46 during his ill-fated Northwest Passage expedition. The search for his crew led to much of the Canadian Arctic Archipelago being mapped. Nearly six decades later, in 1903, Norwegian explorer Roald Amundsen became the first to successfully navigate the Northwest Passage.

### Day 8 Port Leopold, NU

Port Leopold is a place of raw, rugged natural beauty and landscapes that evoke a sense of awe and wonder. The pristine wilderness and untouched terrain create a feeling of remoteness and isolation, while the Arctic wildlife that calls this place home adds a touch of wildness and unpredictability. The





area's history as a former Hudson's Bay Company trading post also lends a sense of nostalgia and intrigue.

#### Day 8 Elwin Bay, NU

As the ship crosses Lancaster Sound to Elwin Bay, it passes by Prince Leopold Island, which, in season, hosts over 500,000 nesting pairs of thick-billed murres, black guillemots, northern fulmars, and black-legged kittiwakes. Thousands of beluga bones scattered across the beaches serve as a poignant reminder of the area's whaling history. The region was explored in the 1850s during the search for Franklin's lost expedition.

#### Day 9 Cruising Bellot Strait, NU

The Bellot Strait, named in honour of the French explorer Joseph-Rene Bellot, is a narrow, 2.3-km-wide, and 25-km-long waterway. It separates Somerset Island to the north from the Boothia Peninsula to the south. This strait played a historical role during an expedition to locate Sir John Franklin's lost expedition, tragically marked by Bellot's death in the area in 1853.

#### Day 9 Fort Ross, NU

The ship sails past Fort Ross, on Somerset Island, the northernmost fur trading post of the Hudson's Bay Company. Near the Bellot Strait, it was eventually abandoned due to harsh ice conditions. The strait separates Somerset Island from Boothia Peninsula, home to Point Zenith, the northernmost continental point of the Americas. It's also where Sir James Clark Ross located the Magnetic North Pole during Sir John Ross's 1829 Arctic expedition.

#### Day 10 Cruise Peel Sound, NU

Choked up by ice in winter, Peel Sound is a 125-mile-long channel separating Prince of Wales Island to the west and Somerset Island to the east. The icebound arctic waters thwarted several 19th-century explorers - Sir John

Franklin in 1846, Francis Leopold McClintock in 1858 and Allen Young in 1875. Today, Peel Sound still remains a challenging waterway, but is also home to abundant wildlife, including polar bears, seals and whales.

#### Day 10 Coningham Bay, NU

Coningham Bay, on Prince of Wales Island in the heart of the Northwest Passage, holds historical and cultural significance and serves as a haven for Arctic wildlife. The nutrient-rich waters attract beluga whales, sustaining the well-fed local polar bear population. The bay's rich history is intertwined with Arctic exploration, as Captain James Cook charted it in 1778 during his final voyage through the Northwest Passage.

#### Day 11 Day at sea

Sea days are rarely dull. Take the time to sit back and let the world go by. The ship's observation decks provide stunning views of the passing ocean. A day at sea gives you the opportunity to mingle with other passengers and share your experiences of this incredible trip or head to our library which is stocked full of reference books. Get an expert's view in one of our on-board lectures or perhaps perfect your photography skills with invaluable advice from our onboard professional photographers.

#### Day 12 Buchan Gulf, NU

Buchan Gulf, a remote Arctic fjord on Baffin Island's northeastern coast, is one of the world's most important nesting sites for northern fulmars, who roost on the towering cliffs and rocks. Polar bears roam the shores of Icy Arm, a narrow fjord with the relics of an ancient Thule semi-subterranean home sitting on the edge of the boggy tundra. Pods of narwhals are at home in the deep waters of this glacial fjord system on eastern Baffin Island.

#### Day 13 Qikiqtarjuaq



# Wild Earth Travel

*Small Ships, Big Adventures*

**wildearth-travel.com**

**info@wildearth-travel.com**

Qikiqtarjuaq is a remote, beautiful Baffin Island community surrounded by towering mountains and glaciers. The rugged landscape and pristine wilderness offer endless opportunities for outdoor adventure, from kayaking to wildlife watching. The town's Inuit culture and traditions are still alive. But what sets Qikiqtarjuaq apart is the warmth and hospitality of its people, who welcome visitors and share their rich history and traditions with pride.

## Day 14 Day at sea

Sea days are rarely dull. Take the time to sit back and let the world go by. The ship's observation decks provide stunning views of the passing ocean. A day at sea gives you the opportunity to mingle with other passengers and share your experiences of this incredible trip or head to our library which is stocked full of reference books. Get an expert's view in one of our on-board lectures or perhaps perfect your photography skills with invaluable advice from our onboard professional photographers.

## Day 15 Nuuk

Home to more than a third of Greenlanders, the capital of Nuuk has a thriving cultural scene including the Greenland National Museum, home to the world-renowned Qilakitsoq mummies. Also known by its Danish name of Godthab (Good Hope), Nuuk's bustling harbour features Nuuk Cathedral and colourful wooden houses, alongside modern architecture. Nuuk also serves as a gateway to Inuit experiences and adventures in the surrounding fjords and mountains.

## Please note:

Itineraries are subject to change.

Wild Earth Travel  
*Small Ships, Big Adventures*

**0800 945 3327** (within New Zealand) | +64 (0) 3 365 1355 | **1800 107 715** (within Australia)

info@wildearth-travel.com | **wildearth-travel.com**

# Wild Earth Travel

*Small Ships, Big Adventures*

**wildearth-travel.com**

**info@wildearth-travel.com**

## YOUR SHIP: VEGA

<b>YOUR SHIP:</b>	<b>Vega</b>
<b>VESSEL TYPE:</b>	<b>Luxury Expedition / Cruise Ship</b>
<b>LENGTH:</b>	<b>115 metres</b>
<b>PASSENGER CAPACITY:</b>	<b>152</b>
<b>BUILT/REFURBISHED:</b>	<b>2020-2021-2022</b>



Our brand new ship has been designed to journey to off the beaten path destinations and remote polar regions in style and comfort. The ship incorporates a PC5 ice-strengthened hull combined with extra-large stabilisers to make your journey as smooth as possible.

Sophisticated Elegance. We know how important outdoor space is, so our spacious, relaxing public spaces provide wide open, unobstructed views throughout the ship. The destination will always be in view.

Your Wellbeing. The safety & happiness of our guests is paramount to our 120-strong crew on board as well as our passionate expedition team who'll be serving up thrilling shore excursions and lasting memories.

Cabin Types. Our 76 cabins including 6 suites have all the amenities you will need to feel comfortable including dressing gowns, hairdryers, personal safes and minibars. Our stylish cabins all have desks, a dressing area and comfy seating. En suite bathrooms all feature glass-enclosed rain showers.

Wild Earth Travel

*Small Ships, Big Adventures*

**0800 945 3327** (within New Zealand) | +64 (0) 3 365 1355 | **1800 107 715** (within Australia)

info@wildearth-travel.com | **wildearth-travel.com**



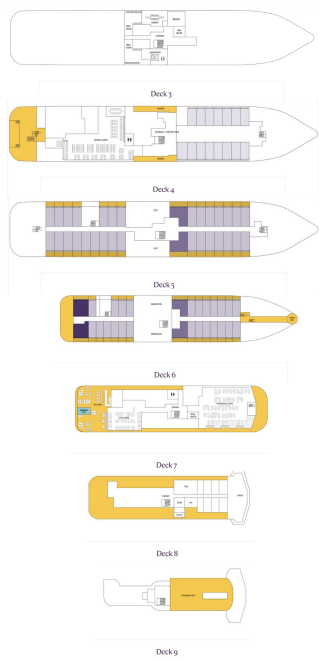


**Wild Earth Travel**  
*Small Ships, Big Adventures*

**wildearth-travel.com**

**info@wildearth-travel.com**

**INSIDE YOUR SHIP**



Balcony D5



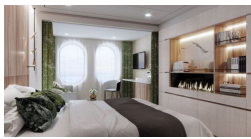
Balcony M5



Oceanview D4



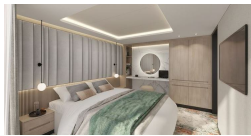
Oceanview M4



Premium Suite



Suite





# Wild Earth Travel

*Small Ships, Big Adventures*

**wildearth-travel.com**

**info@wildearth-travel.com**

## PRICING

02-Sep-2026 to 17-Sep-2026

Oceanview D4	29780 AUD pp
Oceanview M4	31280 AUD pp
Balcony D5	35680 AUD pp
Balcony M5	37180 AUD pp
Suite	51980 AUD pp
Premium Suite	59580 AUD pp