

Wild Earth Travel

Small Ships, Big Adventures

wildearth-travel.com

info@wildearth-travel.com

ORIGIN OF SPECIES - NORTH-EASTERN GALAPAGOS ADVENTURE

Our itinerary together begins on Santa Cruz Island, the most populous of all the archipelago, where we meet giant tortoises in the wild and then venture to Eden Islet. From there, we hop over the lovely crescent bay of Chinese Hat. On Wednesday, one of the icon sites of the archipelago awaits: Bartolome Island, with its wooden walkway up to a panoramic viewpoint, golden sandy beach and great snorkelling opportunities. Close-by, Sullivan Bay gives us a great introduction to the volcanic origins of the Islands. We end with an exciting visit to the sunken caldera of Genovesa, far up in the east of the archipelago, a privileged place to visit amid thousands of marine birds. All the crew aboard *La Pinta* will do our utmost to ensure your Galapagos experience is truly, deeply moving and memorable.



ITINERARY

Day 1 Highlands (Santa Cruz Island)

Baltra Airport Following our morning arrival at Baltra Airport, we transfer to the Itabaca Channel, taking a small ferry across the channel to the north shore of Santa Cruz Island. We board our bus to the highlands, where we'll learn about Santa Cruz's unique ecosystems and biodiversity. Lunch is served at a local restaurant. **Highlands (Santa Cruz Island)** After lunch, we continue by bus to reach a reserve that is one of the best places in the archipelago to see giant tortoises in their natural habitat. The tortoises are easy to spot, lumbering around, eating grass and leaves and wallowing in the small pools. There are several lava tunnels in the reserve, too. A short bus ride takes us down to Puerto Ayora to board Yacht *La Pinta*.

Day 2 Eden Islet (Santa Cruz Island) and Sombrero Chino Islet

Eden Islet (Santa Cruz Island) After breakfast, a panga ride takes us to Eden Islet, located off the coast of Santa Cruz, where we can observe blue-footed boobies diving into the water, reef sharks and frigates. There's a chance to

Wild Earth Travel

Small Ships, Big Adventures

0800 945 3327 (within New Zealand) | +64 (0) 3 365 1355 | **1800 107 715** (within Australia)

info@wildearth-travel.com | wildearth-travel.com



Wild Earth Travel

Small Ships, Big Adventures

wildearth-travel.com

info@wildearth-travel.com

snorkel and, if weather conditions permit, to ride in the glass-bottom boat. The volcanic setting of this area is quite stunning due to its variety of volcanic debris, including cinder cones, tuff cones, and semi-eroded lava flows. **Sombrero Chino Islet** The tiny island of Sombrero Chino gets its name from its appearance, reminiscent of a Chinese hat. This islet, formed only fairly recently, makes a beautiful visit as one explores the wildlife along its 400-metre long trail, which begins at a crescent-shaped white sandy beach. The cove offers excellent swimming and snorkeling opportunities amid white-tipped reef sharks and Galapagos penguins.

uplifted origin) is the reason why the island was chosen back in the 1940s as the location for building an airport.

Please Note:

Galapagos Itineraries are subject to change due to weather, logistical, Galapagos Park regulations or operational reasons.

Day 3 Bartolomé Island and Sullivan Bay (James Island)

Bartolome Island This morning, a Galapagos icon awaits: Bartolome Island. A great way to start the day, with a steep climb up a wooden staircase: the view from the top is worth the effort! Following the walk, we take to the dinghies for a ride around colossal Pinnacle Rock, followed by time to enjoy the beach and some snorkeling. We can also ride in the glass-bottom boat for great views of the underwater world. **Sullivan Bay (Santiago Island)** After lunch, we board the pangas to land at Sullivan Bay on the east coast of Santiago, a white coral sand beach great for swimming and snorkeling, and with a trail over a lava field that flowed here less than 100 years ago. This is the perfect place to see and feel the volcanic origin of Galapagos while observing its wildlife.

Day 4 Darwin Bay and Prince Philip's Steps (Genovesa Island)

Darwin Bay In the morning, we begin our exploration of this island with an easy stroll to observe marine and land birds. There is an optional walk over sharp lava and uneven terrain for dramatic views, or else we can return to the beach to enjoy swimming and snorkeling at this beautiful natural harbor. The more adventurous can snorkel along the cliffs or paddle sea kayaks. **Prince Philip's Steps (Genovesa Island)** The afternoon starts with a very interesting panga ride along the cliffs before we disembark for a short but steep climb up a wooden staircase. Once at the top, the land is flat, allowing for a captivating walk of about a mile to the other side of this small island, observing large colonies of Nazca boobies, frigate birds and storm petrels and the elusive short-eared owl.

Day 5 Baltra Island

Baltra Island Our journey ends at Baltra Island, where we transfer to the airport to take the flight back to the mainland. Baltra's flat substrate (due to its

Wild Earth Travel
Small Ships, Big Adventures

0800 945 3327 (within New Zealand) | +64 (0) 3 365 1355 | **1800 107 715** (within Australia)

info@wildearth-travel.com | wildearth-travel.com

Wild Earth Travel

Small Ships, Big Adventures

wildearth-travel.com

info@wildearth-travel.com

YOUR SHIP: LA PINTA

YOUR SHIP:	La Pinta
VESSEL TYPE:	Small Ship
LENGTH:	63 metres
PASSENGER CAPACITY:	48 (in 24 cabins)
BUILT/REFURBISHED:	1983 / 2007 / 2020

The elegant, recently renovated La Pinta reflects the combined dreams shared by captains, crew, guides, and guests over the years. This beautiful 48-guest yacht features spacious cabins with floor-to-ceiling windows and sophisticated yet relaxed decks and lounges.

In one of the world's greatest marine environments, you can be sure your surroundings are front and center. From bow to stern, the elegant and sophisticated La Pinta recently received a full interior makeover and would steal the show anywhere less impressive. Instead, she's the perfect complement to the great outdoors. Floor-to-ceiling windows in the lounge showcase the views with a decor that nods to the nautical. Geared up for adventure play and wildlife, the yacht also has a fun-to-explore expedition room lined with maps and artwork, a canopied terrace, and an alfresco dining area. Her Ecuadorian crew exudes friendliness, fueled by pride in their vessel, the Galapagos Islands, and a desire to share them both. Because some good things are too good to keep secret.

Ship Amenities

Onboard Features include three public decks, on-deck hot tub, exercise room with fitness equipment, expedition room along

with an outdoor sky bar and observation lounge.

The lounge features floor to ceiling windows, the library features historical materials, and the aft covered alfresco dining area also features the hot tub and bar. Perfection.

The Dining Room features open seating. Meals are served at table at set times. Unlimited beverages, alcoholic and non, are included in the price of the cruise. Vegetarian options are always available. Dietary restrictions are happily accommodated with advance notice.

Cabin Features: Floor-to-ceiling view windows; air conditioning; universal docking station; hairdryer, conditioning shampoo, body wash; in-room safe deposit box



deposit box

Wild Earth Travel

Small Ships, Big Adventures

0800 945 3327 (within New Zealand) | +64 (0) 3 365 1355 | **1800 107 715** (within Australia)

info@wildearth-travel.com | **wildearth-travel.com**

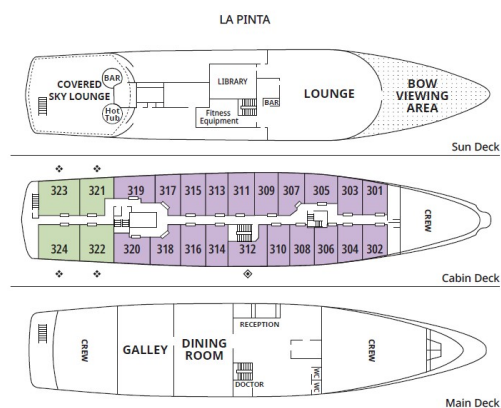
Wild Earth Travel

Small Ships, Big Adventures

wildearth-travel.com

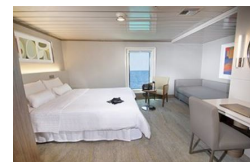
info@wildearth-travel.com

INSIDE YOUR SHIP



Admiral (ADM) ♦ Double or Triple Accommodation
Captain (CPT) ♦ Fixed Queen

Luxury Plus Cabin/Admiral Cabin



Wild Earth Travel

Small Ships, Big Adventures

0800 945 3327 (within New Zealand) | +64 (0) 3 365 1355 | 1800 107 715 (within Australia)

info@wildearth-travel.com | wildearth-travel.com

Wild Earth Travel

Small Ships, Big Adventures

wildearth-travel.com

info@wildearth-travel.com

PRICING

14-Jul-2025 to 18-Jul-2025

Luxury Plus Cabin/Admiral Cabin 5870 USD pp

More Cabin Categories Available 0 pp

28-Jul-2025 to 01-Aug-2025

Luxury Plus Cabin/Admiral Cabin 5870 USD pp

More Cabin Categories Available 0 pp

11-Aug-2025 to 15-Aug-2025

Luxury Plus Cabin/Admiral Cabin 5870 USD pp

More Cabin Categories Available 0 pp

25-Aug-2025 to 29-Aug-2025

Luxury Plus Cabin/Admiral Cabin 5870 USD pp

More Cabin Categories Available 0 pp

08-Sep-2025 to 12-Sep-2025

Luxury Plus Cabin/Admiral Cabin 5870 USD pp

More Cabin Categories Available 0 pp

22-Sep-2025 to 26-Sep-2025

Luxury Plus Cabin/Admiral Cabin 5870 USD pp

More Cabin Categories Available 0 pp

06-Oct-2025 to 10-Oct-2025

Luxury Plus Cabin/Admiral Cabin 5870 USD pp

More Cabin Categories Available 0 pp

20-Oct-2025 to 24-Oct-2025

Luxury Plus Cabin/Admiral Cabin 5870 USD pp

More Cabin Categories Available 0 pp

03-Nov-2025 to 07-Nov-2025

Luxury Plus Cabin/Admiral Cabin 5870 USD pp

More Cabin Categories Available 0 pp

17-Nov-2025 to 21-Nov-2025

Luxury Plus Cabin/Admiral Cabin 5870 USD pp

More Cabin Categories Available 0 pp

01-Dec-2025 to 05-Dec-2025

Luxury Plus Cabin/Admiral Cabin 5870 USD pp

More Cabin Categories Available 0 pp

15-Dec-2025 to 19-Dec-2025

Luxury Plus Cabin/Admiral Cabin 5870 USD pp

More Cabin Categories Available 0 pp

29-Dec-2025 to 02-Jan-2026

Wild Earth Travel

Small Ships, Big Adventures

0800 945 3327 (within New Zealand) | +64 (0) 3 365 1355 | 1800 107 715 (within Australia)

info@wildearth-travel.com | wildearth-travel.com

Wild Earth Travel

Small Ships, Big Adventures

wildearth-travel.com

info@wildearth-travel.com

**Luxury Plus Cabin/Admiral
Cabin**

5870 USD pp

More Cabin Categories Available 0 pp

12-Jan-2026 to 16-Jan-2026

**Luxury Plus Cabin/Admiral
Cabin**

5987 USD pp

More Cabin Categories Available 0 pp

26-Jan-2026 to 30-Jan-2026

**Luxury Plus Cabin/Admiral
Cabin**

5987 USD pp

More Cabin Categories Available 0 pp

09-Feb-2026 to 13-Feb-2026

**Luxury Plus Cabin/Admiral
Cabin**

5987 USD pp

More Cabin Categories Available 0 pp

23-Feb-2026 to 27-Feb-2026

**Luxury Plus Cabin/Admiral
Cabin**

5987 USD pp

More Cabin Categories Available 0 pp

09-Mar-2026 to 13-Mar-2026

**Luxury Plus Cabin/Admiral
Cabin**

5987 USD pp

More Cabin Categories Available 0 pp

Wild Earth Travel
Small Ships, Big Adventures

0800 945 3327 (within New Zealand) | +64 (0) 3 365 1355 | **1800 107 715** (within Australia)

info@wildearth-travel.com | **wildearth-travel.com**

Wild Earth Travel

Small Ships, Big Adventures

wildearth-travel.com

info@wildearth-travel.com

PRICING

23-Mar-2026 to 27-Mar-2026

Luxury Plus Cabin/Admiral Cabin 5987 USD pp

More Cabin Categories Available 0 pp

06-Apr-2026 to 10-Apr-2026

Luxury Plus Cabin/Admiral Cabin 5987 USD pp

More Cabin Categories Available 0 pp

20-Apr-2026 to 24-Apr-2026

Luxury Plus Cabin/Admiral Cabin 5987 USD pp

More Cabin Categories Available 0 pp

18-May-2026 to 22-May-2026

Luxury Plus Cabin/Admiral Cabin 5987 USD pp

More Cabin Categories Available 0 pp

01-Jun-2026 to 05-Jun-2026

Luxury Plus Cabin/Admiral Cabin 5987 USD pp

More Cabin Categories Available 0 pp

15-Jun-2026 to 19-Jun-2026

Luxury Plus Cabin/Admiral Cabin 5987 USD pp

More Cabin Categories Available 0 pp

13-Jul-2026 to 17-Jul-2026

Luxury Plus Cabin/Admiral Cabin 5987 USD pp

More Cabin Categories Available 0 pp

10-Aug-2026 to 14-Aug-2026

Luxury Plus Cabin/Admiral Cabin 5987 USD pp

More Cabin Categories Available 0 pp

24-Aug-2026 to 28-Aug-2026

Luxury Plus Cabin/Admiral Cabin 5987 USD pp

More Cabin Categories Available 0 pp

07-Sep-2026 to 11-Sep-2026

Luxury Plus Cabin/Admiral Cabin 5987 USD pp

More Cabin Categories Available 0 pp

21-Sep-2026 to 25-Sep-2026

Luxury Plus Cabin/Admiral Cabin 5987 USD pp

More Cabin Categories Available 0 pp

02-Nov-2026 to 06-Nov-2026

Luxury Plus Cabin/Admiral Cabin 5987 USD pp

More Cabin Categories Available 0 pp

16-Nov-2026 to 20-Nov-2026

Wild Earth Travel

Small Ships, Big Adventures

0800 945 3327 (within New Zealand) | +64 (0) 3 365 1355 | **1800 107 715** (within Australia)

info@wildearth-travel.com | wildearth-travel.com

Wild Earth Travel

Small Ships, Big Adventures

wildearth-travel.com

info@wildearth-travel.com

**Luxury Plus Cabin/Admiral
Cabin**

5987 USD pp

More Cabin Categories Available 0 pp

30-Nov-2026 to 04-Dec-2026

**Luxury Plus Cabin/Admiral
Cabin**

5987 USD pp

More Cabin Categories Available 0 pp

14-Dec-2026 to 18-Dec-2026

**Luxury Plus Cabin/Admiral
Cabin**

5987 USD pp

More Cabin Categories Available 0 pp

28-Dec-2026 to 01-Jan-2027

**Luxury Plus Cabin/Admiral
Cabin**

5987 USD pp

More Cabin Categories Available 0 pp

**Galapagos National Park
admission fee and transit Control
Card for Galapagos 220 USD pp**

ADDITIONAL CHARGES:

Wild Earth Travel

Small Ships, Big Adventures

0800 945 3327 (within New Zealand) | +64 (0) 3 365 1355 | **1800 107 715** (within Australia)

info@wildearth-travel.com | **wildearth-travel.com**