



Wild Earth Travel

Small Ships, Big Adventures

wildearth-travel.com

info@wildearth-travel.com

NORTHEAST GREENLAND'S UNEXPLORED SEA ICE

Le Commandant Charcot opens the way to new horizons and invites you aboard to explore the north-east coast of Greenland, an untouched, remote region surrounded by sea ice carried along the Transpolar Drift. At the end of spring, in the comfort of this marvel of technology, be guided and amazed at the opportunities for exploration in one of the hardest to reach areas of the Far North.

In these first days of summer, a time of year that is particularly precocious and hostile in the Arctic, ice and snow are still omnipresent. Along the Blosseville Coast, discovered by the eponymous lieutenant in 1833 during a journey that led to his disappearance, the pack ice, forming sharp peaks. You will explore this inhospitable land and attempt to venture closer to its untouched shores. Off in the distance, the dark rock formations of the alpine peaks rise from the opaline desert.

En route, you will discover the Ittoqqortoormiit region at the entrance to Scoresby Sound, the world's largest network of fjords. The isolated villages, with their colourful traditional houses, stand out against the surrounding whiteness. Among the first outside visitors of the season, you will be warmly welcomed by the community. During privileged exchanges mixed with joyful and authentic moments, you Inuit hospitality is no myth, it is given in the warmth of a look or an exchanged smile.

Farther on and higher up, the solid and powerful sea ice commands the visitors who venture out to it. To the north-east of Greenland, you will sail with humility amid the drift ice and

continue your exploration at the heart of immaculate landscapes, among the icebergs revealing their blue-tinged underside below the surface of the dark water.

Aboard your ship, a kayak or a zodiac, or during a polar hike, you will have diverse opportunities to explore these hypnotic, infinitely varied panoramas, including sumptuous glaciers, huge fjords, and icebergs trapped by the ice. Le Commandant Charcot also offers exceptional conditions for observing the Arctic wildlife. You may get the chance to glimpse a blue whale at the entrance to a fjord, or the stirring silhouette of a large bear in search of food.

For seeker of polar treasures, see the beauty of the world evokes a childlike awe. In the hostile environment, you will find wonder in a ray of light or in the flight of a bird gliding along the edge of an ice monument. With frozen treasures as far as the eye can see, exploring the far reaches of the world feels like a waking dream.

Wild Earth Travel
Small Ships, Big Adventures

0800 945 3327 (within New Zealand) | +64 (0) 3 365 1355 | **1800 107 715** (within Australia)

info@wildearth-travel.com | **wildearth-travel.com**

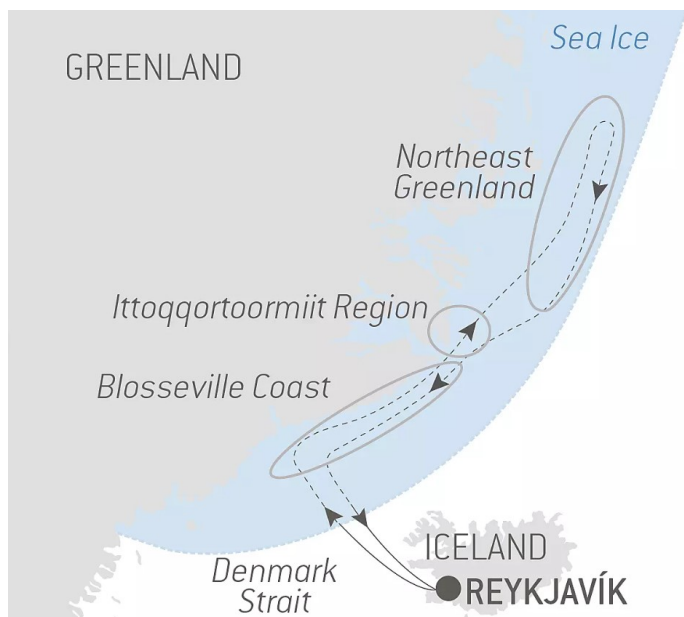


Wild Earth Travel

Small Ships, Big Adventures

wildearth-travel.com

info@wildearth-travel.com



Lying between Greenland and Iceland, the Denmark Strait was crossed for the first time by the Vikings in the late 10th century, during Erik the Red's expeditions. In the Second World War, its waters were the theatre of a battle between the Kriegsmarine and the Royal Navy, on 24 May 1941. In the wintertime, extremely dense pack ice forms along the Greenlandic coasts and, while the Transpolar Drift sweeps icebergs along throughout the year, the strait is generally clear of ice during the summer. In the depths of the strait lies the world's largest waterfall, an undersea cataract formed by the difference in temperature between the cold waters of the Greenland Sea and the warmer waters of the Irminger Sea. Numerous cetacean species thrive in this rich ecosystem.

Day 3 EXPLORING THE BLOSSEVILLE COAST

Aboard your ship, follow in the footsteps of Jules Poret de Blosseville, a French explorer and sailor. In 1833, he set off to discover this isolated and unexplored part of eastern Greenland aboard *La Lilloise*, an adventure with a fatal outcome. The uninhabited territory that bears his name lies to the south of Scoresby Sound. Surrounded by ice, icebergs and pack ice - thin or thick, flat or pronounced - as far as the eye can see, Blosseville Coast is a wild and distant place to which very few people have access. Exploring it means a slow immersion into the heart of a frozen, almost unreal desert, where the variations in light transform one's perception of the landscape. In the kingdom of the polar bears, *Le Commandant Charcot*, a silent ship open to the exterior, will offer exceptional moments observing Arctic wildlife, through a series of encounters.

Days 4 - 7 EXPLORATION OF ITTOQQORTOORMIIT REGION

On the East coast of Greenland, in the Ittoqqortoormiit region that is covered with snow and ice for nine months of the year, you will have the rare opportunity of immersing yourself in the heart of an isolated territory and exploring the beauty of its infinite polar whiteness. The high alpine mountains punctuate the sky and gradually reveal their dark rock edges beneath a coat of snow. Located at the entrance to the longest system of fjords in the world, sits the village of Ittoqqortoormiit, one of the northernmost inhabited places on the East coast. Its name means 'great house' in Greenlandic and it is home to the last hunters of the polar region, whose ancestral way of life you will encounter. As soon as the thickness of the ice floe allows it, the hunters set out on the trail of walrus, seals, narwhals, musk oxen and polar bears, travelling by traditional dog sleds. On these expanses of immaculate snow, the silence is

king dream.

ITINERARY

Day 1 REYKJAVÍK

Iceland's capital stretches along the edge of a vast bay in the west of the country. Perlan, the "Pearl of Reykjavik", a museum located on 'Oskjuhlíð hill, offers a panoramic view of the lush, green landscapes. A little further, one can easily spot the signpost showing the way to the evangelical Hallgrímskirkja church, and to the historical centre where one can stroll along the Skólavörðustígur and the Laugavegur, two lively streets with charming small shops. For some relaxation just outside of the city, visitors have the opportunity to visit the Reykjanes peninsula and its famous thermal lagoons of the Blue Lagoon.

Day 2 SAILING THROUGH THE DENMARK STRAIT

Wild Earth Travel
Small Ships, Big Adventures

0800 945 3327 (within New Zealand) | +64 (0) 3 365 1355 | 1800 107 715 (within Australia)

info@wildearth-travel.com | wildearth-travel.com



Wild Earth Travel

Small Ships, Big Adventures

wildearth-travel.com

info@wildearth-travel.com

broken only by the sounds of the dogs, the grating of a sled coming back from a run or of footsteps on the ice. You will discover Inuit traditions through privileged and festive moments on the ice floe and in the village.

Days 8 - 10 EXPLORATION OF NORTH-EAST GREENLAND

Set sail for North-East Greenland to immerse yourself further and up higher in the Arctic region to explore the unexpected riches of the sea ice, where traditional ships cannot travel at this time of the year. As the light shifts and the moods of the sky change, the different states of the ice and the infinite diversity of its textures create an exceptionally stunning tableau. With patience and humility, you will sail amid the pearl-white floating cathedrals and the ice carried by the Transpolar Drift. En route, icebergs have their journey halted by ice and pressure ridges reveal their sharp edges. In the midst of this icy vastness, beauty is found in the detail and the magic of the moment. In the realm of polar bears, Le Commandant Charcot is a reassuring cocoon built for polar exploration and offers you wonderful opportunities to observe these lords of the ice when you happen upon them. You may even get the chance to admire the moving sight of a mother and her cub travelling across the immaculate icy expanse.

Days 11 - 13 EXPLORING THE BLOSSEVILLE COAST

Aboard your ship, follow in the footsteps of Jules Poret de Blosseville, a French explorer and sailor. In 1833, he set off to discover this isolated and unexplored part of eastern Greenland aboard La Lilloise, an adventure with a fatal outcome. The uninhabited territory that bears his name lies to the south of Scoresby Sound. Surrounded by ice, icebergs and pack ice - thin or thick, flat or pronounced - as far as the eye can see, Blosseville Coast is a wild and distant place to which very few people have access. Exploring it means a slow immersion into the heart of a frozen, almost unreal desert, where the variations in light transform one's perception of the landscape. In the kingdom of the polar bears, Le Commandant Charcot, a silent ship open to the exterior, will offer exceptional moments observing Arctic wildlife, through a series of encounters.

Day 14 SAILING THROUGH THE DENMARK STRAIT

Lying between Greenland and Iceland, the Denmark Strait was crossed for the first time by the Vikings in the late 10th century, during Erik the Red's

expeditions. In the Second World War, its waters were the theatre of a battle between the Kriegsmarine and the Royal Navy, on 24 May 1941. In the wintertime, extremely dense pack ice forms along the Greenlandic coasts and, while the Transpolar Drift sweeps icebergs along throughout the year, the strait is generally clear of ice during the summer. In the depths of the strait lies the world's largest waterfall, an undersea cataract formed by the difference in temperature between the cold waters of the Greenland Sea and the warmer waters of the Irminger Sea. Numerous cetacean species thrive in this rich ecosystem.

Day 15 REYKJAVÍK

Iceland's capital stretches along the edge of a vast bay in the west of the country. Perlan, the "Pearl of Reykjavik", a museum located on 'Oskjuhlíð hill, offers a panoramic view of the lush, green landscapes. A little further, one can easily spot the signpost showing the way to the evangelical Hallgrímskirkja church, and to the historical centre where one can stroll along the Skólavörðustígur and the Laugavegur, two lively streets with charming small shops. For some relaxation just outside of the city, visitors have the opportunity to visit the Reykjanes peninsula and its famous thermal lagoons of the Blue Lagoon.

Please Note:

We are privileged guests in these extreme lands where we are at the mercy of weather and ice conditions. Our navigation, mostly in the fjords, will be determined by the type of ice we come across; as the coastal ice must be preserved, we will take this into account from day to day in our itineraries. The sailing programme, outings, activities and observation of fauna cannot be guaranteed and are subject to weather and ice conditions. The experiences are unique and vary from day to day and for each departure. The Captain and the Expedition Leader will make every effort to ensure that your experience is as rich as possible, while respecting safety instructions and regulations imposed by the AECO.

Wild Earth Travel
Small Ships, Big Adventures

0800 945 3327 (within New Zealand) | +64 (0) 3 365 1355 | **1800 107 715** (within Australia)

info@wildearth-travel.com | wildearth-travel.com



YOUR SHIP: LE COMMANDANT-CHARCOT

YOUR SHIP:	Le Commandant-Charcot
VESSEL TYPE:	Polar Luxury Expedition
LENGTH:	149.9 meters
PASSENGER CAPACITY:	135 cabins
BUILT/REFURBISHED:	2018/2019

Be the first aboard Le Commandant-Charcot, the world's luxury polar exploration vessel, and enjoy a unique sailing experience in the Arctic or Antarctic!

With its hybrid propulsion combining liquefied natural gas (LNG) and electric generators, Le Commandant-Charcot has been designed to minimise the environmental impact of travel to the furthest latitudes.

The decoration of the ship, imagined by two internationally renowned design and architecture firms - the studio of Jean-Philippe Nuel and Wilmotte & Associates - is designed to be in harmony with the environment. The approach is contemporary with the desire to create a warm and elegant setting; stone, wood and leather recall the natural environment in which the ship is sailing.

Equipped with just 135 staterooms including 31 suites with balconies and outside views, Le Commandant-Charcot welcomes you in an intimate and refined atmosphere. Outstanding gastronomy in the two restaurants, relaxation in the indoor pool surrounded by its winter garden, relaxation in the well-being area with sauna and Snow Room... Like on a private yacht, each of our guests is unique.

PUBLIC AREAS

Le Commandant-Charcot has many common areas that are designed and equipped to meet all of your needs while preserving the intimacy of each passenger.

A 177 m² reception area includes: A reception/concierge desk, An expeditions desk, The ship's administrative services, The sales office, manned by our Hospitality & Travel Manager officer, Our boutique which sells clothing, jewellery, beauty products, postcards and various accessories, The image & photo desk.

The different lounges: A 302 m² main lounge including a 28 m² cigar lounge, a tea corner and a bar, with live music on selected evenings, A 400 m² panoramic bar and lounge, An open-air Bar.

The recreation spaces

Fitness & Beauty Corner: Fitness room: Elliptic, running machines, bicycles...

Beauty Corner: Hairdresser, Massage rooms, Sauna, Snow Room, Nail Shop.

Pool area: Indoor Pool and winter garden - Outdoor Pool

Theatre: Capacity: 270-276 - Main show room for conferences and live entertainment on selected evenings - State-of-the-art audio and video technology.

Leisure area: Public areas - Library - Medical centre.

16 Zodiac®.



16 Zodiac®.

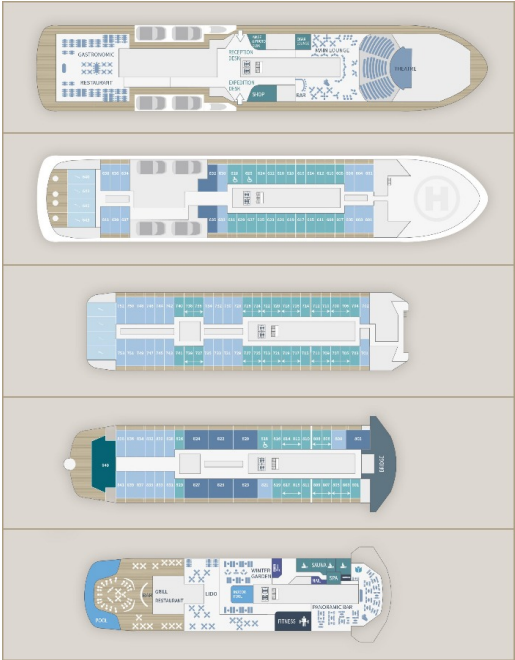


Wild Earth Travel
Small Ships, Big Adventures

wildearth-travel.com

info@wildearth-travel.com

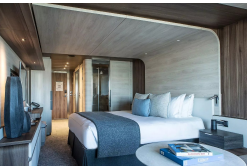
INSIDE YOUR SHIP



Deluxe Suite Deck 6



Deluxe Suite Deck 8



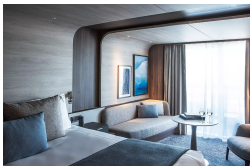
Owner's Suite



Prestige Stateroom Deck 7



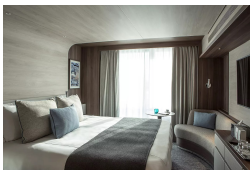
Deluxe Suite Deck 7



Grand Prestige Suite



Prestige Stateroom Deck 6



Prestige Stateroom Deck 8



Wild Earth Travel
Small Ships, Big Adventures

0800 945 3327 (within New Zealand) | +64 (0) 3 365 1355 | **1800 107 715** (within Australia)

info@wildearth-travel.com | wildearth-travel.com



Wild Earth Travel

Small Ships, Big Adventures



wildearth-travel.com

info@wildearth-travel.com

PRICING

14-May-2026 to 28-May-2026

Prestige Stateroom Deck 6	39410 AUD pp
Prestige Stateroom Deck 7	40200 AUD pp
Prestige Stateroom Deck 8	40990 AUD pp
Deluxe Suite Deck 6	42160 AUD pp
Deluxe Suite Deck 7	44130 AUD pp
Deluxe Suite Deck 8	45690 AUD pp
Prestige Suite Deck 7	59060 AUD pp
Prestige Suite Deck 8	61020 AUD pp
Grand Prestige Suite	62970 AUD pp
Privilege Suite Deck 8	66910 AUD pp
Suite Duplex	92440 AUD pp
Owner's Suite	136340 AUD pp

ADDITIONAL CHARGES:

Port Taxes & Fees 1040 AUD pp



Wild Earth Travel
Small Ships, Big Adventures

0800 945 3327 (within New Zealand) | +64 (0) 3 365 1355 | **1800 107 715** (within Australia)

info@wildearth-travel.com | **wildearth-travel.com**



Wild Earth Travel

Small Ships, Big Adventures



wildearth-travel.com

info@wildearth-travel.com

UP TO 30% OFF - SPECIAL BONUS

Online prices reflect the current brochure fare savings of up to 30%. Prices may change based on demand. Terms and conditions apply. This special offer is subject to availability. Please contact us for more details.

Wild Earth Travel

Small Ships, Big Adventures

0800 945 3327 (within New Zealand) | +64 (0) 3 365 1355 | **1800 107 715** (within Australia)

info@wildearth-travel.com | **wildearth-travel.com**