



Wild Earth Travel

Small Ships, Big Adventures

wildearth-travel.com

info@wildearth-travel.com

NORTH SPITSBERGEN EXPLORER - INTO THE PACK ICE

This expedition focuses on the pack ice of north Spitsbergen and many opportunities to spot whales, polar bears, seabirds, walrus, and other such wildlife.



ITINERARY

Day 1: Largest town, biggest island

You touch down in Longyearbyen, the administrative center of Spitsbergen, the largest island of the Svalbard archipelago. Enjoy strolling around this former mining town, whose parish church and Svalbard Museum make for fascinating attractions. Though the countryside appears stark, more than a hundred species of plant have been recorded in it. In the early evening the ship sails out of Isfjorden, where you might spot the first minke whale of your voyage.

Wild Earth Travel
Small Ships, Big Adventures

0800 945 3327 (within New Zealand) | +64 (0) 3 365 1355 | 1800 107 715 (within Australia)

info@wildearth-travel.com | wildearth-travel.com



Wild Earth Travel

Small Ships, Big Adventures

wildearth-travel.com

info@wildearth-travel.com

Day 2-7: North Spitsbergen's natural beauty, wildlife, and pack-ice

This voyage will take you into the pack ice and along the remote shorelines of rugged north Spitsbergen. Places we might visit include the following:

Raudfjord

On the north coast of Spitsbergen, you can enjoy this expansive fjord spilling with glaciers - and maybe even visited by ringed and bearded seals. The cliffs and shoreline also support thriving seabird colonies, rich vegetation, and the possibility of polar bears.

Monaco Glacier

Depending on the weather and sea ice, we could sail into Liefdefjorden and cruise within sight of the 5-kilometer-long (3.1 miles) face of Monaco Glacier. The waters in front of this precipitous glacier are a favorite feeding spot for thousands of kittiwakes, and the base of the ice is a popular polar bear hunting ground. If ice conditions prevent us from sailing here early in the season, we may sail along the west coast of Spitsbergen.

The Seven Islands

The northernmost point of the voyage may be north of Nordaustlandet, in the Seven Islands. Here we may reach 80° north, just 870 km (540 miles) from the geographic North Pole. At Phippsøya there is a walrus haul-out site, while Rossøya is the northernmost landmass in Spitsbergen. The vessel may sail deeper into the pack ice when wheeling around west again.

Sailing in the pack ice

While we retrace our route west, keep watch for polar bears, ringed seals, and elusive Greenland (bowhead) whales. This is also the habitat of ivory gulls. About 40 nautical miles (74 km) west of Spitsbergen, we'll sail the edge of the continental shelf. Here fin whales forage during the summer in the upwelling zones (where cold, nutrient-rich water wells up from below the sea's surface) that run along the Spitsbergen banks. At the mouth of Kongsfjorden, you have a good chance of sighting minke whales.

Forlandsundet wildlife

Walrus sometimes haul out in Forlandsundet, at Palfylodden. But if we cannot go there, we might sail to the mouth of Isfjorden, where we may see different species of rorqual whales. Our intended landing site is Alkhornet, where seabirds nest on the cliffs, Arctic foxes search below for fallen eggs and chicks, and reindeer graze the sparse vegetation. Another possibility is the glacier front in Ymerbukta, where you can see congregations of various eider duck species.

Day 8: There and back again

Even great adventures must eventually come to an end. The vessel arrives back in Longyearbyen in the early morning, and bus transportation to the airport will be provided.

Please note:

Itineraries are subject to change.

Wild Earth Travel
Small Ships, Big Adventures

0800 945 3327 (within New Zealand) | +64 (0) 3 365 1355 | **1800 107 715** (within Australia)

info@wildearth-travel.com | wildearth-travel.com



Wild Earth Travel

Small Ships, Big Adventures

wildearth-travel.com

info@wildearth-travel.com

YOUR SHIP: ORTELIUS

YOUR SHIP:	Ortelius
VESSEL TYPE:	Expedition
LENGTH:	91m
PASSENGER CAPACITY:	108-123
BUILT/REFURBISHED:	

Built / Refurbished : 1989 / 2015

Ortelius was originally the Marina Svetaeva. Built in Gdynia, Poland in 1989, it served as a special-purpose vessel for the Russian Academy of Science. Later it was re-flagged and renamed after the Dutch/Flemish cartographer Abraham Ortelius (1527 - 1598), who in 1570 published the first modern world atlas: Theatrum Orbis Terrarum or Theater of the World. At that time his atlas was the most expensive book ever printed. Ortelius is classed by Lloyd's Register in London and flies the Dutch flag.

Perfect for Any Expedition

The vessel has the highest ice-class notation (UL1, equivalent to 1A) and is therefore suitable to navigate in solid one-year sea ice as well as loose multi-year pack ice. Ortelius can accommodate up to 108 passengers and has an abundance of open-deck spaces. It is manned by 24 highly experienced nautical crew members, 20 hotel staff, eight expedition specialists (one expedition leader, one assistant, and six lecturer-guides), and one doctor.

Ortelius: a Vessel with Comfort and Character

Please be aware that a small number of cabins may have a

partially obstructed view due to the size of the windows and the design requirements of the ship. For example, some windows may be partly obstructed in the lower half by a gangway. The best view is always on the outer deck or the bridge. Though our voyages are primarily meant to offer our passengers an exploratory wildlife program with as much time ashore as possible, Ortelius offers all the comforts of a standard hotel along with a bar and lecture room. Flexibility assures maximum wildlife opportunities. As such, Ortelius carries 10 Zodiacs with 60hp Yamaha engines.

Age & Nationality

Passengers on a typical voyage range from in their 30s to their 80s, with the majority usually between 45 - 65. Our expeditions attract independent travelers from around the globe who are characterized by a strong interest in exploring remote regions. The camaraderie that develops on board is an important part of the Oceanwide experience, and many passenger groups include several nationalities.

What to Wear

In keeping with the spirit of expedition, dress on board is informal. Bring casual and comfortable clothing for all activities, and keep in mind that much of the scenery can be appreciated from deck which can be slippery. Bring sturdy shoes with no-slip soles, and make sure your parka is never far away in case one of our crew shouts "Whales!" over the loudspeaker and you have to dash outside in a moment's notice. Opt for layers, as it is comfortably warm aboard the ship though often cold on deck.

How to Pay

Wild Earth Travel
Small Ships, Big Adventures

0800 945 3327 (within New Zealand) | +64 (0) 3 365 1355 | **1800 107 715** (within Australia)

info@wildearth-travel.com | wildearth-travel.com

Wild Earth Travel

Small Ships, Big Adventures

wildearth-travel.com

info@wildearth-travel.com

Refreshments and souvenirs will be charged to your cabin. The day before departure you can settle your bill with the hotel manager, paying by credit card (Visa or MasterCard) or cash (euro, or in some cases dollar). We cannot, however, accept checks. Though the prices and standard currency on board is in the euro, other currencies may be accepted at the discretion of the hotel manager, at prevailing rates.

Electric Current

The electrical supply aboard ship is 220v, 60Hz. Electrical outlets are standard European with two thick round pins, so some passengers may need a 220v/110v converter.

Gratuities

The customary gratuity to the ship's service personnel is made as a blanket contribution at the end of the voyage and is divided among the crew. Tipping is a personal matter, and the amount you wish to give is at your sole discretion. As a generally accepted guideline, we suggest 8 – 10 euros per passenger per day. It is better for the crew if you give cash.

Non-Smoking Policy

We have a non-smoking policy inside all our vessels, though you can smoke in certain designated areas. We ask that you please respect the wishes of non-smokers.

Your Physical Condition

You must be in good overall health and be able to walk several hours per day. The expedition is ship-based and physically not very demanding, but we spend as much time as possible on shore. You are, however, welcome to remain aboard the ship if you prefer. To join most excursions you must be able to get up and down the steep gangway from the ship to the water level to board the Zodiacs. Staff will assist you in and out of the boats, and boarding will become progressively easier with

practice, but conditions on shore can be slippery and rocky. Remember, you will be traveling in remote areas without access to sophisticated medical facilities, so you must not join this expedition if you have a life-threatening condition or need daily medical treatment.



treatment.

Wild Earth Travel

Small Ships, Big Adventures

0800 945 3327 (within New Zealand) | +64 (0) 3 365 1355 | **1800 107 715** (within Australia)

info@wildearth-travel.com | **wildearth-travel.com**

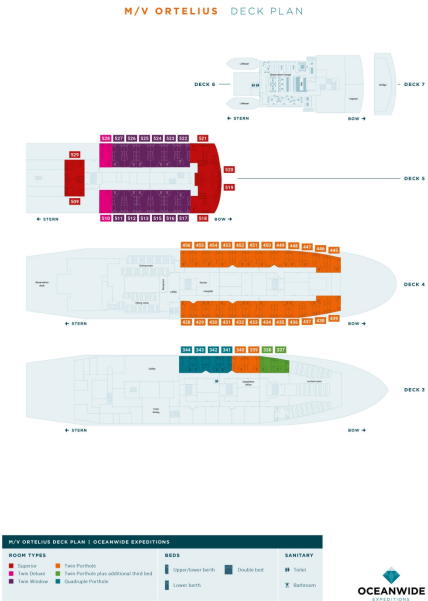


Wild Earth Travel
Small Ships, Big Adventures

wildearth-travel.com

info@wildearth-travel.com

INSIDE YOUR SHIP



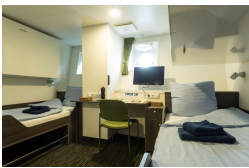
Quadruple Porthole



Superior



Triple Porthole



Twin Deluxe



Twin Porthole



Twin Window





PRICING

12-Jun-2025 to 19-Jun-2025

Quadruple Porthole	4300 USD pp
Triple Porthole	5350 USD pp
Twin Porthole	5950 USD pp
Twin Window	6450 USD pp
Twin Deluxe	6800 USD pp
Superior	7750 USD pp

Quadruple Porthole	4450 USD pp
Triple Porthole	5550 USD pp
Twin Porthole	6150 USD pp
Twin Window	6700 USD pp
Twin Deluxe	7100 USD pp
Superior	8050 USD pp
Polar Bear Special Departure	0 pp

19-Jun-2025 to 26-Jun-2025

Quadruple Porthole	4300 USD pp
Triple Porthole	5350 USD pp
Twin Porthole	5950 USD pp
Twin Window	6450 USD pp
Twin Deluxe	6800 USD pp
Superior	7750 USD pp
Summer Solstice Departure	0 pp

05-Jun-2026 to 12-Jun-2026

Quadruple Porthole	4450 USD pp
Triple Porthole	5550 USD pp
Twin Porthole	6150 USD pp
Twin Window	6700 USD pp
Twin Deluxe	7100 USD pp
Superior	8050 USD pp
Polar Bear Special Departure	0 pp

12-Jun-2026 to 19-Jun-2026