

Wild Earth Travel

Small Ships, Big Adventures

wildearth-travel.com

info@wildearth-travel.com

NORDIC NAVIGATOR — FROM NORWAY'S WILDS TO SCOTLAND'S ISLES CRUISE

From Arctic Norway to the wild isles of Scotland

Setting out from Tromsø, we'll explore some spectacular regions of Norway during the enchanting winter season. With five nights above the Arctic Circle, you'll experience the dramatic beauty of the Lofoten Islands, the forested mountains of Vesterålen, the serenity of Senja and the epic sight of the Svartisen glacier. It's a time of snow-frosted mountains, deep blue fjords and - with luck - the Northern Lights. We'll then cross the Norwegian Sea to Scotland's windswept and history-soaked Northern Isles, Shetland and Orkney.

Unique experiences get you closer

This expedition-style adventure brings you closer to nature and culture in both Norway and Scotland, with included activities such as snowshoeing, hiking, kayaking, and small boat cruising. In Norway, you'll relish some uniquely Norwegian experiences such as a beach bonfire under the stars, a Nordic sauna and polar plunge, and an exclusive after-hours museum dinner at the famed Hurtigrutemuseet. When we reach Shetland and Orkney, you'll learn about their Norse heritage and perhaps sample a few local whiskies before we head south to finish our voyage in Glasgow.



ITINERARY

Day 1 Depart from Tromsø

Discover the gateway to the Arctic

Backed by snowy mountains, lively Tromsø is the perfect place from which to set out on an adventure. It was the base for many a historic Arctic expedition, including those of Roald Amundsen, and its situation 250 miles north of the Polar Circle has led to it being called the 'Gateway to the Arctic'.

Wild Earth Travel

Small Ships, Big Adventures

0800 945 3327 (within New Zealand) | +64 (0) 3 365 1355 | **1800 107 715** (within Australia)

info@wildearth-travel.com | **wildearth-travel.com**

Wild Earth Travel

Small Ships, Big Adventures

wildearth-travel.com

info@wildearth-travel.com

If you arrive early in Tromsø we recommend exploring the city before joining your cruise. There's plenty to see, such as the Polar Museum, where you'll learn about the city's exploration heritage. And make sure to visit the striking Arctic Cathedral - with its huge stained-glass window.

Day 2 Discover Norway in miniature

Senja is Norway's second-largest island, and it's sometimes called Norway-in-miniature. With its rugged mountains, sandy beaches, dark forests and idyllic fishing villages, you can see how it earned this name. Free-roaming reindeer wander around the island, so keep an eye out for them.

Here, we'll visit a local community and experience some warm Scandinavian hospitality. We'll learn about the Sami culture, and about life in remote villages during the winter months. Some of the time, we'll be sailing in the dark and at dusk - but this will only enhance our experience, with glittering snowscapes illuminated by the low sun and the starlight.

Please note, this is an exploration day and the actual route taken may vary from the text above.

Day 3 Vesterålen

Enjoy an exclusive adventure

As we sail towards the Vesterålen, the Expedition Team will seek out the best place for a nature landing, perhaps at one of the many fine beaches likely covered in pristine snow. We may head out in our small expedition boats to explore between remote islands or get out the kayaks.

Vesterålen awaits us with its beautiful snow-covered landscapes, ideal for expedition activities such as snowshoe hiking, small boat cruising and kayaking. It's here that we have another bespoke adventure when we spend an evening at the Hurtigruten Museum, where you'll enjoy an exclusive opening and be served dinner in this very special heritage setting.

Day 4 Lofoten

Experience dramatic panoramas

Sailing from Vesterålen to Lofoten, we cruise through the narrow Trollfjord into the Raftsund strait, passing between towering cliffs. As we do so, you'll enjoy great views from the deck, and we sail so close to the sides it feels like you can almost touch them!

In winter, the Lofoten Islands transform into a snow-covered wonderland. Narrow fjords, hidden beached between towering mountains and picturesque fish villages are all ideal for a small ship like MS Spitsbergen. Discover Svolvær or relax in a traditional Nordic sauna before taking a thrilling polar plunge - sure to revitalise you!

Please note, this is an exploration day and the actual route taken may vary from the text above.

Day 5 Svartisen

Discover Norway's second-largest glacier

Today, we'll sail into Holandsfjord off the rugged Helgeland coast, and head towards Svartisen glacier. Covering 230 square miles and with 60 'tongues', this incredible geographical feature is Norway's second largest glacier after Jostedalbreen.

Meaning 'black ice', the epic Svartisen is made up of two separate glaciers, Vestisen and the Østisen, which are divided by the 0.6-mile-long Vesterdalen valley. The ice colour can range from turquoise to dark blue, although never quite black.

If conditions allow, your Expedition Team will land at a local jetty and lead you ashore, where we'll take a hike to get a closer view of this incredible glacier.

Day 6-7 At sea

Relax at sea as we head towards Scotland's Shetland Islands

Wild Earth Travel

Small Ships, Big Adventures

0800 945 3327 (within New Zealand) | +64 (0) 3 365 1355 | **1800 107 715** (within Australia)

info@wildearth-travel.com | **wildearth-travel.com**

Wild Earth Travel

Small Ships, Big Adventures



wildearth-travel.com

info@wildearth-travel.com

As we make our way south through the sheltered fjords, the soul-stirring scenery continues. Passing through the inner waters, see how the soft winter sun casts its magical spell across the snow-dusted landscape and soaring mountains.

Take some time to relax and enjoy the facilities of your expedition ship. Soak up the scenery out on deck, warm up in the sauna, or join your Expedition Team for fascinating talks and demonstrations in the Science Centre.

As we get closer to Scotland's Northern Isles, we'll enter the waters of the North Sea.

Day 8 Lerwick's past and present

Discover Scotland's most northerly inhabited isles

Today we reach the most northern outpost of the British Isles, docking the capital of Scotland's Shetland Islands, Lerwick. These islands have a rich heritage, and local people are justifiably proud of it. You'll see references to monuments and times past wherever you go.

After our crossing of the Norwegian Sea, find your land legs again walking around this friendly Victorian-influenced fishing town. Wander around the town's narrow lanes and discover little shops selling locally made products such as whiskies, woollen sweaters and fudge. By the old waterfront you'll find the Shetland Museum, charting the area's rich history. Nearby you can see Fort Charlotte and the regal-looking Town Hall.

Day 9 Highlights of Orkney

Learn about Kirkwall's Norse heritage

Today we arrive at the Orkney Islands' largest town, Kirkwall. Explore this vibrant, Viking-influenced island capital, which is still compact enough to cover on foot.

Visit the regal St Magnus Cathedral, made from distinctive local red sandstone, and the adjacent Earl's Palace to see the stone ruins of this once-grand Renaissance building. The famous Neolithic settlement of Skara

Brae is also only a bus ride away.

Whisky aficionados will enjoy Kirkwall's Highland Park and Scapa distilleries for their unique single malts. Or if you fancy something a bit different, Orkney Distillery produces gin made from local Orcadian botanicals.

Day 10 Glasgow

End your voyage in Scotland's second city

For the last week and a half, we've travelled from the wilds of Arctic Norway to the islands of Scotland, and today our expedition comes to an end in Glasgow's Greenock. If you're still in explorer mode, Glasgow has plenty of things to offer the curious traveller.

In the harbour, you'll find the striking Riverside Museum and the beautiful tall ship Glenlee beside it. Glenlee launched in 1896 - making her the same age as HX - and she has circumnavigated the globe several times. In the city, admire the Gothic architecture of Glasgow Cathedral and view the eclectic art and natural history at Kelvingrove Art Gallery and Museum. It's an excellent way to round off your adventure!

Please note:

Itineraries are subject to change.

Wild Earth Travel

Small Ships, Big Adventures

0800 945 3327 (within New Zealand) | +64 (0) 3 365 1355 | **1800 107 715** (within Australia)

info@wildearth-travel.com | **wildearth-travel.com**

Wild Earth Travel

Small Ships, Big Adventures

wildearth-travel.com

info@wildearth-travel.com

YOUR SHIP: SPITSBERGEN

YOUR SHIP:	Spitsbergen
VESSEL TYPE:	Expedition
LENGTH:	100 metres
PASSENGER CAPACITY:	335
BUILT/REFURBISHED:	2009 / 2016

MS Spitsbergen is named after the crown jewel of Arctic Norway - the Svalbard archipelago and its biggest island, Spitsbergen. After complete reconstruction, MS Spitsbergen joined the Hurtigruten fleet in 2016. The ship features high technical standards as well as comfortable, modern public areas and cabins. The vessel's fresh Scandinavian design reflects a colour palette derived from the sea. She is modern and environmentally progressive, and we plan further improvements that will reduce emissions and fuel consumption even more. The new ship's maneuverability and optimal size make her quite suitable for exploring polar waters.

Expedition team on board

MS Spitsbergen has its own on-board Expedition Team and serves as a university at sea. Interesting lectures inside the ship as well as out on the sun deck make this an exciting and educational journey. Topics depend on the season and the waters we sail in. The Expedition Team host a lecture programme and evening gatherings daily. Out on deck you can participate in live points of interest to learn more about the nature, culture and other phenomena we encounter along the coast. In addition, the Expedition Team will introduce you to the

uniquely Norwegian notion of `friluftsliv` (outdoor life), and encourage you take part in `friluftsliv` hikes and activities during the journey.

Our dedicated Expedition Teams have one mission: to enhance your experience by engaging you and interpreting the nature, wildlife, and culture you encounter during the voyage. Read more about our Expedition Teams here.

Ship facilities

Expedition Team - Explorer bar - Panoramic lounge - Explorer lounge - Compass Service Centre - Brygga bistro - Shop - Torget main dining - Wi-Fi - Sauna - Fitness room - Lift - Hot tub - Guest launderette - Panoramic deck 8 - Outside bar for events, decks 7 & 8



decks 7 & 8

Wild Earth Travel

Small Ships, Big Adventures

0800 945 3327 (within New Zealand) | +64 (0) 3 365 1355 | **1800 107 715** (within Australia)

info@wildearth-travel.com | wildearth-travel.com

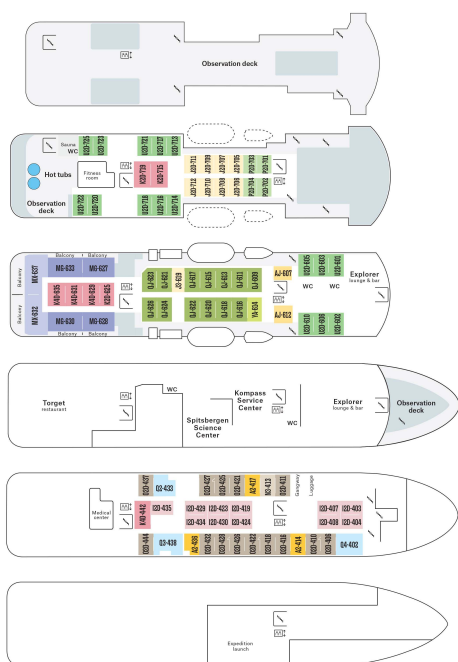
Wild Earth Travel

Small Ships, Big Adventures

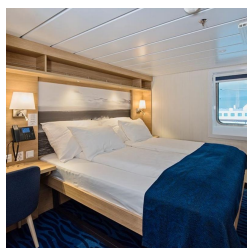
wildearth-travel.com

info@wildearth-travel.com

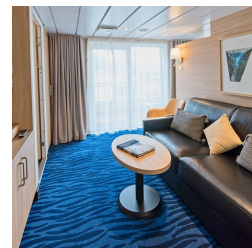
INSIDE YOUR SHIP



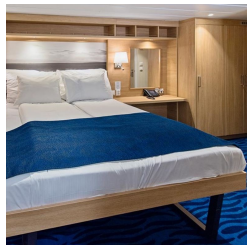
Arctic Superior. From



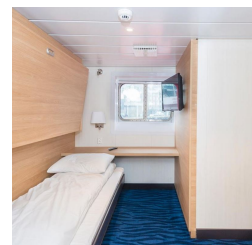
Expedition Suite. From



Polar Inside. From



Polar Outside. From



Wild Earth Travel
Small Ships, Big Adventures

0800 945 3327 (within New Zealand) | +64 (0) 3 365 1355 | 1800 107 715 (within Australia)

info@wildearth-travel.com | wildearth-travel.com



Wild Earth Travel

Small Ships, Big Adventures



wildearth-travel.com

info@wildearth-travel.com

PRICING

28-Mar-2026 to 07-Apr-2026

Polar Inside. From	8248 AUD pp
Polar Outside. From	9650 AUD pp
Arctic Superior. From	10722 AUD pp
Expedition Suite. From	14021 AUD pp

Wild Earth Travel

Small Ships, Big Adventures

0800 945 3327 (within New Zealand) | +64 (0) 3 365 1355 | **1800 107 715** (within Australia)

info@wildearth-travel.com | **wildearth-travel.com**