

# Wild Earth Travel

*Small Ships, Big Adventures*

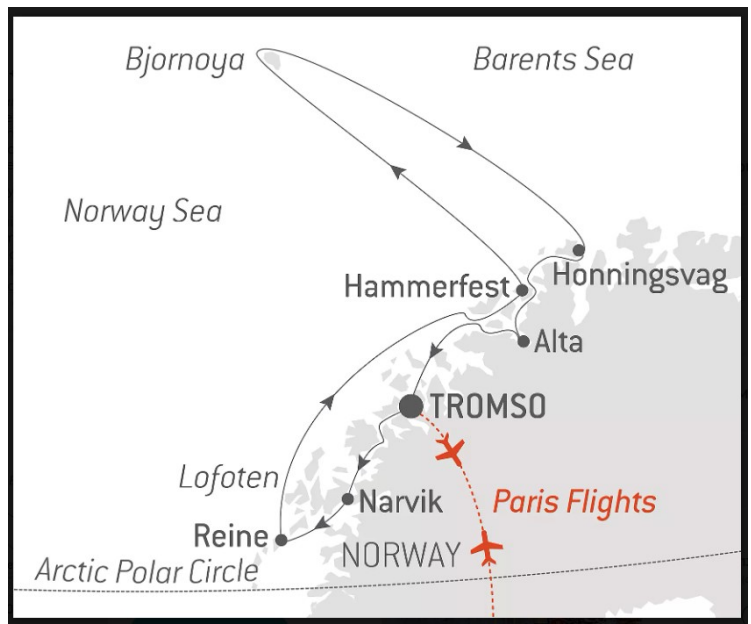
**wildearth-travel.com**

**info@wildearth-travel.com**

## NORDIC DISCOVERIES & TRADITIONS - NORWAY LUXURY CRUISE

Set off aboard Le Champlain for an 11-day cruise and enjoy an exceptional experience exploring Norway in the winter. From Tromso, you will sail towards these magical lands, where your exceptional itinerary will take in snow-capped summits, immaculate landscapes and the discovery of millennial traditions. Throughout your journey, you will benefit from an excursion included per person per port of call, to choose from a selection offered by PONANT. During this cruise, set off to discover the legendary Nordkapp, or the North Cape, from Honningsvåg, appreciate the charm of the Lofoten Islands during a day of visits from Reine, or explore Tromso, the capital of the Arctic, in a rigid-inflatable boat. The diversity of experiences on offer promises you intense and varied moments (to discover the full range of excursions, go to the itinerary tab). Your ship will first make its way south where you will witness the mysterious charm of the Lofoten archipelago. These islands have landscapes of surreal beauty alternating between sea, spectacular fjords, mountain slopes and bright-coloured huts on stilts. You will then continue with an immersion in the land of the Samis. From your disembarkation in Narvik, in the very heart of captivating summits plunging into the sumptuous Ofotfjord, you will be invited to explore the ancestral tales of this reindeer-herding indigenous people. Le Champlain will set sail for Hammerfest, the northernmost town in the world. During your port of call in this charming fishing port, you will have the opportunity to explore the Struve Geodetic Arc, a chain of triangulations stretching from Norway to the Black Sea, and the first technical and scientific tool to become a UNESCO World Heritage Site. You will also sail by Bear Island, halfway between

the North Cape of Norway and the South Cape of Spitsbergen. From your ship, you will marvel at this small strip of land with its craggy coastline and high jagged cliffs. Le Champlain will once again set sail south, for the captivating Honningsvåg. This port of call will take you to the northernmost point of Europe: the North Cape. On this cliff, home to the emblematic Milestone, a globe-shaped monument, allow yourself the time to dream as you gaze upon the vastness of the Barents Sea. You will then discover Alta. With the polar night in full swing, you may be lucky enough to admire the unique colours of the Northern Lights as they ripple and spin above the Arctic Circle. Your trip into the very heart of the immenseness of the Norwegian Arctic polar world will end in Tromso, your disembarkation port.



Wild Earth Travel

*Small Ships, Big Adventures*

**0800 945 3327** (within New Zealand) | +64 (0) 3 365 1355 | **1800 107 715** (within Australia)

info@wildearth-travel.com | wildearth-travel.com

# Wild Earth Travel

*Small Ships, Big Adventures*



**wildearth-travel.com**

**info@wildearth-travel.com**

ation port.

## ITINERARY

### Day 1 TROMSØ

In the north of the Arctic circle you'll discover Tromsø, a secluded town located in the county of Troms. Norwegians call it the "Paris of the north". You'll soon see why when you discover its extensive neoclassical architectural heritage. A stunning example is the Arctic cathedral, a major monument whose stylistic purity echoes the outline of the mountains surrounding the town.

### Day 2 NARVIK

Beyond the Arctic Circle, you will discover Narvik, nestling in the heart of impressive mountains that plunge into the Ofotfjord. It is on the verge of obtaining the "sustainable destination" label, a national label awarded to destinations that are committed to a sustainable approach to tourism for the long term. You will be mesmerised by its scenery. From Narvik, it is possible to take the Ofoten Line towards Sweden. This historic railway once linked the mineral-rich mines of Kiruna in Sweden to the ice-free port of Narvik. You will experience unique moments whether meeting the Sami people reindeer herders who have ancestral traditions and yet embrace modernity.

### Day 3 REINE, LOFOTEN

Way beyond the Arctic Circle, Lofoten Islands are truly considered to be in "another world". A jewel of nature in its most pristine state, this archipelago with its jagged coastline offers you majestic settings of high alpine summits, sandy beaches, green prairies and fjords of a deep blue, where countless bird colonies make their nests. Whether you visit Å, or Nusfjord, listed by UNESCO, enjoy authentic and memorable moments.

### Day 4 AT SEA

During your journey at sea, make the most of the many services and activities on board. Treat yourself to a moment of relaxation in the spa or stay in shape

in the fitness centre. Depending on the season, let yourself be tempted by the swimming pool or a spot of sunbathing. This journey without a port of call will also be an opportunity to enjoy the conferences or shows proposed on board, depending on the activities offered, or to do some shopping in the boutique or to meet the PONANT photographers in their dedicated space. As for lovers of the open sea, they will be able to visit the ship's upper deck to admire the spectacle of the waves and perhaps be lucky enough to observe marine species. A truly enchanted interlude, combining comfort, rest and entertainment.

### Day 5 HAMMERFEST

Hammerfest, located on the north-western coast of the island of Kvaløya, beyond the 70th parallel north, is often considered the northernmost town in the world. Conserved in an immaculate natural setting, this charming fishing port enjoys a rich history, as is evidenced by various vestiges dating back to the Stone Age, Napoleonic wars or the Second World War. During your port of call, you will have the opportunity to discover the Struve Geodetic Arc, a chain of triangulations stretching across Europe from Hammerfest to the Black Sea, and the first technical and scientific object to become a UNESCO World Heritage Site.

### Day 6 SAILING ALONG BJØRNOYA (BEAR ISLAND)

Halfway between Norway and Spitsbergen, you will sail not far from the coastlines of Bjørnøya, the southernmost island of Svalbard. From your ship, observe this isolated piece of land discovered in 1596 by the Dutch navigator Willem Barents, then looking for the Northwest Passage. Following a tough fight between a polar bear and the members of the expedition, he dubbed the place Bear Island. Regularly covered by a thick layer of fog, Bjørnøya shelters a meteorological station built in 1923, which is still in operation. Declared a nature reserve in 2002, the island is above all home to an enormous colony of sea birds: skuas, guillemots, puffins, Tridactyl gulls, petrels, gulls and little auks all coexist here.

### Day 7 HONNINGSVAG

If you feel like you have arrived at the end of the world in Honningsvåg, it is because this is the case. Halfway between Oslo and the North Pole, it competes with Hammerfest for the status of "the northernmost town in

Wild Earth Travel

*Small Ships, Big Adventures*

**0800 945 3327** (within New Zealand) | +64 (0) 3 365 1355 | **1800 107 715** (within Australia)

info@wildearth-travel.com | **wildearth-travel.com**



# Wild Earth Travel

*Small Ships, Big Adventures*



**wildearth-travel.com**

**info@wildearth-travel.com**

Continental Europe". Colourful houses light up this charming and typically Norwegian fishing port nestled in the hollows of the region's mountainous terrain. Travellers come to stay in the village to go to the North Cape. At the end of the road, you will see the globe that indicates that you are at the very end of Europe. At this point, only the Svalbard archipelago separates you from the North Pole. There is sea as far as the eye can see. The Northern Lights, the view of the immense cliff plunging into the sea, the thousands of puffins, gannets and cormorants that spin around you: everything here is grandiose.

## Days 8 - 9 ALTA

Beyond the Arctic Circle, Alta, in the far north of Norway, is the biggest city in Finnmark county. Alta will reveal itself to you at the end of the eponymous fjord, Altafjorden. The region offers a mix of forest, mountainous and coastal landscapes. It is on the verge of obtaining the "sustainable destination" label, a national label awarded to destinations that are committed to a sustainable approach to tourism for the long term. Alta invites you to experience unique moments, whether meeting the Sami people reindeer herders who have ancestral traditions and yet embrace modernity or during walks, snowshoe hikes or dog sledding, depending on the season.

## Days 10 - 11 TROMSØ

In the north of the Arctic circle you'll discover Tromsø, a secluded town located in the county of Troms. Norwegians call it the "Paris of the north". You'll soon see why when you discover its extensive neoclassical architectural heritage. A stunning example is the Arctic cathedral, a major monument whose stylistic purity echoes the outline of the mountains surrounding the town.

### Please Note:

Itineraries are subject to change.

Wild Earth Travel  
*Small Ships, Big Adventures*

**0800 945 3327** (within New Zealand) | +64 (0) 3 365 1355 | **1800 107 715** (within Australia)

info@wildearth-travel.com | **wildearth-travel.com**

# Wild Earth Travel

*Small Ships, Big Adventures*



**wildearth-travel.com**

**info@wildearth-travel.com**

## YOUR SHIP: LE LAPEROUSE

<b>YOUR SHIP:</b>	<b>Le Laperouse</b>
<b>VESSEL TYPE:</b>	<b>Luxury</b>
<b>LENGTH:</b>	<b>127 metres</b>
<b>PASSENGER CAPACITY:</b>	<b>92 cabins</b>
<b>BUILT/REFURBISHED:</b>	<b>2017/2018</b>

Featuring innovative and environmentally-friendly equipment, elegantly designed cabins, spacious suites with large windows, and lounge areas that open onto the outside, this new limited-capacity yacht boasting just 92 cabins and suites will offer you a truly unique cruising experience.

Aboard this ship that flies the French flag, you will experience the incomparable pleasure of an intimate cruise, with the possibility of exploring an ever-increasing range of destinations in an ethnic-chic ambiance with luxury service.

Experience a luxurious setting where the accent is on authenticity and passion for travel.

### RESTAURANTS

As it is an essential part of French culture, gastronomy will naturally have pride of place aboard this new ship. Through its two restaurants, Le Laperouse will invite you on a journey to elegance and epicureanism.

In a relaxed atmosphere, a first dining area located on Deck 3 and able to seat 70 will serve grilled meats daily, along with a variety of salads and desserts.

To the back of Deck 4, you will find a 260 m<sup>2</sup> panoramic restaurant which can accommodate all of our passengers in a

single sitting. Designed differently to that on our other ships, this dining area, which opens onto the outside, will have a buffet of salads, desserts and cheeses at your disposal. Our discreet and attentive crew will provide table service for hot meals.

### PUBLIC AREAS

Like Le Boreal and its sisterships, Le Laperouse has many common areas that are designed and equipped to meet all of your needs while preserving the intimacy of each passenger.

A 140 m<sup>2</sup> reception area includes: A reception/concierge desk, An excursions desk, The ship's administrative services, The sales office, manned by our Guest Relations Officer, Our 50 m<sup>2</sup> boutique which sells clothing, jewellery, beauty products, postcards and various accessories, Toilets accessible to passengers with reduced mobility.

A new hydraulic platform with adjustable height provides: Easier boarding than on any other cruise ship, Easier Zodiac embarkation and disembarkation for expeditions, Easier access to the sea for swimming and practising various water sports such as kayaking or paddle-boarding.

A pool deck offering: A pool with a panoramic view, equipped with a counter-current swimming system, A pleasant solarium, An outdoor bar and lounge with armchairs and sofas.

A 200 m<sup>2</sup> main lounge which can accommodate all of our passengers to share convivial moments and to host activities organised during the day or evening.

Lastly, a theatre that seats 188, equipped with: The latest sound and lighting technology, A LED wall as the stage backdrop, for the projection of high-resolution images and videos.

Wild Earth Travel

*Small Ships, Big Adventures*

**0800 945 3327** (within New Zealand) | +64 (0) 3 365 1355 | **1800 107 715** (within Australia)

info@wildearth-travel.com | **wildearth-travel.com**





# Wild Earth Travel

*Small Ships, Big Adventures*



**wildearth-travel.com**

**info@wildearth-travel.com**



and videos.



## Wild Earth Travel

*Small Ships, Big Adventures*

**0800 945 3327** (within New Zealand) | +64 (0) 3 365 1355 | **1800 107 715** (within Australia)

info@wildearth-travel.com | **wildearth-travel.com**

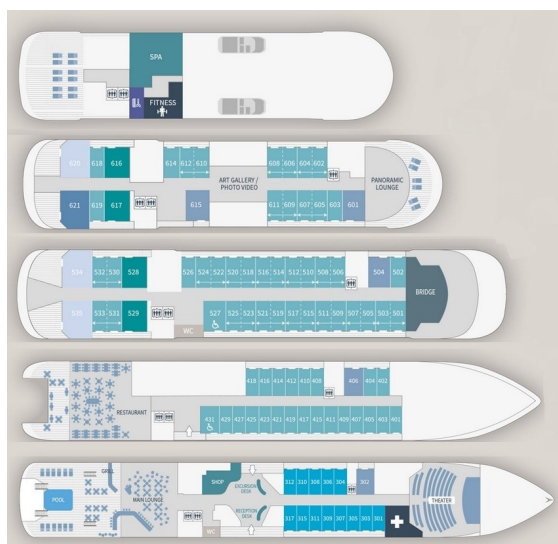
# Wild Earth Travel

*Small Ships, Big Adventures*

[wildearth-travel.com](http://wildearth-travel.com)

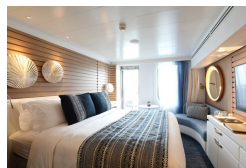
[info@wildearth-travel.com](mailto:info@wildearth-travel.com)

## INSIDE YOUR SHIP



- Owner's Suite Deck 6
- Privilege Suites Deck 5-6
- Grand Deluxe Suites Deck 5-6
- Prestige Suites Deck 5-6
- Deluxe Suites Deck 5-6
- Prestige Cabins Deck 4-5-6
- Deluxe Cabins Deck 3

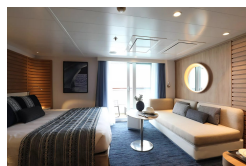
### Deluxe Stateroom



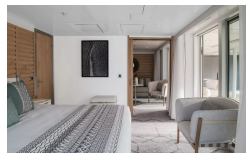
### Deluxe Suite Deck 4



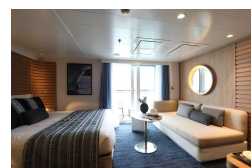
### Deluxe Suite Deck 6



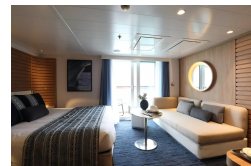
### Grand Deluxe Suite Deck 6



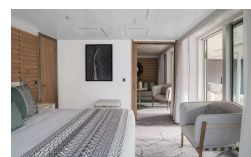
### Deluxe Suite



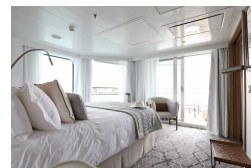
### Deluxe Suite Deck 5



### Grand Deluxe Suite



### Owner's Suite



Wild Earth Travel  
*Small Ships, Big Adventures*

0800 945 3327 (within New Zealand) | +64 (0) 3 365 1355 | 1800 107 715 (within Australia)

[info@wildearth-travel.com](mailto:info@wildearth-travel.com) | [wildearth-travel.com](http://wildearth-travel.com)



# Wild Earth Travel

*Small Ships, Big Adventures*

**wildearth-travel.com**

**info@wildearth-travel.com**

## PRICING

**13-Mar-2026 to 23-Mar-2026**

<b>Deluxe Stateroom</b>	<b>20430 AUD pp</b>
<b>Prestige Stateroom Deck 4</b>	<b>21360 AUD pp</b>
<b>Prestige Stateroom Deck 5</b>	<b>21920 AUD pp</b>
<b>Prestige Stateroom Deck 6</b>	<b>22650 AUD pp</b>
<b>Deluxe Suite Deck 5</b>	<b>29500 AUD pp</b>
<b>Deluxe Suite Deck 4</b>	<b>29500 AUD pp</b>
<b>Deluxe Suite Deck 6</b>	<b>29500 AUD pp</b>
<b>Deluxe Suite</b>	<b>29500 AUD pp</b>
<b>Prestige Suite Deck 5</b>	<b>31530 AUD pp</b>
<b>Prestige Suite Deck 6</b>	<b>32460 AUD pp</b>
<b>Privilege Suite Deck 6</b>	<b>33200 AUD pp</b>
<b>Privilege Suite</b>	<b>33200 AUD pp</b>
<b>Grand Deluxe Suite</b>	<b>34120 AUD pp</b>
<b>Grand Deluxe Suite Deck 6</b>	<b>34120 AUD pp</b>
<b>Owner's Suite</b>	<b>35040 AUD pp</b>

### ADDITIONAL CHARGES:

**Port Taxes and Fees 740 AUD pp**

**Wild Earth Travel**  
*Small Ships, Big Adventures*

**0800 945 3327** (within New Zealand) | +64 (0) 3 365 1355 | **1800 107 715** (within Australia)

info@wildearth-travel.com | wildearth-travel.com



# Wild Earth Travel

*Small Ships, Big Adventures*



**wildearth-travel.com**

**info@wildearth-travel.com**

## SPECIAL OFFERS

Online prices reflect the current brochure fare savings of up to 30%. Prices may change based on demand. Terms and conditions apply. This special offer is subject to availability. Please contact us for more details.

**Wild Earth Travel**

*Small Ships, Big Adventures*

**0800 945 3327** (within New Zealand) | +64 (0) 3 365 1355 | **1800 107 715** (within Australia)

info@wildearth-travel.com | **wildearth-travel.com**