



Wild Earth Travel

Small Ships, Big Adventures

wildearth-travel.com

info@wildearth-travel.com

NEW ZEALAND COASTAL ODYSSEY: THE ULTIMATE EXPEDITION CRUISE OF THE NEW ZEALAND COAST

With the 9th longest coastline in the world measuring some 15,000 kilometres you will wind through narrow fiords, circumnavigate small islands, explore secluded bays, and visit quaint seaside towns. Bordering the Tasman Sea and the Pacific Ocean, and once part of Gondwanaland, New Zealand has a fascinating natural and cultural history from its first Polynesian arrivals through European settlement, early sealing and whaling and world leading conservation efforts. Places of interest include the sunken valleys and towering mountains of Fiordland's Doubtful and Dusky Sounds; the volcanoes, hot springs and geysers of Rotorua; the 'World's Coolest Little Capital' (Wellington); the scenic playground of the Marlborough Sounds; the Scottish city of Dunedin; the wine-lover's paradise of Nelson; the iconic wildlife havens of Stewart Island and nearby predator free Ulva Island; and many Kiwi towns along the way including New Zealand's Art Deco capital the city of Napier, and the French-infused village of Akaroa.

Those looking for a thrilling exploration filled with wildlife encounters will enjoy observations of dolphins and whale watching, exceptional birdwatching including a number of rare endemic species and an albatross colony on the Otago Peninsula. Those with a taste for gourmet delights will enjoy experiencing some of New Zealand's award winning cuisine including the wines of Canterbury, Marlborough, Nelson and the Hawke's Bay, and cheese in Akaroa.

Our vessel Heritage Adventurer is built for exploring regions like New Zealand's intricate coastline, navigating through fiords,

Wild Earth Travel

Small Ships, Big Adventures

0800 945 3327 (within New Zealand) | +64 (0) 3 365 1355 | **1800 107 715** (within Australia)

info@wildearth-travel.com | **wildearth-travel.com**

Wild Earth Travel

Small Ships, Big Adventures

wildearth-travel.com

info@wildearth-travel.com

cruising up harbours, and allowing for Zodiac cruising to remote and isolated bays. We invite you to join us on this in-depth exploration of New Zealand.

Today we enjoy breakfast in the hotel restaurant and have the morning free to explore Queenstown before returning to the hotel for lunch and departing for the Port of Bluff to embark Heritage Adventurer. You will have time to settle into your accommodation and familiarise yourself with the ship. You are invited to join the expedition team in the Observation Lounge and up on the Observation Deck as we set our course to Fiordland and our adventure begins.

Days 3-4: Fiordland

We have two days to explore the incredible wilderness of Fiordland in the south-west corner of the South Island. This is an area rich in history, majestic scenery and abundant in wildlife. Fiordland was well known to local M ori, with the demi-god Tu-teraki-whanoa being said to have used his adze, Te Hamo, to carve out the region's fiords. Captain Cook and his crew landed here on HMS Resolution in 1773, they were the first Europeans to visit Fiordland, subsequently spending five weeks in Dusky Sound. Cook's records of his discovery and maps attracted sealers and whalers. Historically this region is very important and shaped the future of the country. Fiordland's coast is only accessible by sea, making it the most remote region of New Zealand's mainland. Waterfalls, streams, rivers, and fiords are enveloped with misty veils that come and go, revealing steep gradients of mountain peaks and sheltered valleys. A rugged terrain, the thickly forested floors are covered with ferns, lichens, and mosses. Bottlenose Dolphins, Fiordland Crested Penguins and Little Blue Penguins are all residents of the fiords; during our time here we will look for them. Our schedule gives us the flexibility to visit as much as possible, areas we plan to explore include Doubtful Sound, Dusky Sound and Acheron Passage, Astronomer's Point and Pickersgill Harbour. During our time in Dusky Sound there will be the optional opportunity to experience an unforgettable helicopter flight through the Sound swooping down alongside Cooper Island and Cook Channel with a landing on Mt Pender where spectacular vistas across constellations of islands stretching into the horizon and dotting the winding fiords can be enjoyed. Our final plan will be determined by the weather. The Captain and Expedition Leader will work hard to make the best use of our time in this incredible region of New Zealand, including areas that a few New Zealanders have visited.

Day 5: Stewart Island



ew Zealand.

ITINERARY

Day 1: Queenstown

Guests should make their way to the designated hotel where we will spend the first night of the expedition. This evening there will be an informal get-together at the hotel for dinner; an excellent opportunity to meet fellow adventurers on your voyage and some of our expedition team.

Day 2: Queenstown/Bluff

Wild Earth Travel
Small Ships, Big Adventures

0800 945 3327 (within New Zealand) | +64 (0) 3 365 1355 | **1800 107 715** (within Australia)

info@wildearth-travel.com | wildearth-travel.com



Wild Earth Travel

Small Ships, Big Adventures

wildearth-travel.com

info@wildearth-travel.com

New Zealand's third island is well off the usual beaten tourist track. It is a wonderfully tranquil place; the scenery of untouched bushland is stunning. We will enjoy a morning exploring Ulva Island which is rich in history and wildlife, being a predator-free island since 1997 the bird song and wildlife is some of the best. In Paterson Inlet you will have time to explore the sandy beaches of Boulder Bay and West End Beach or just enjoy some time around Post Office Bay and Sydney Cove. Some of the wildlife you may get to see while walking the tracks on Ulva Island include Stewart Island Robin, Stewart Island Weka, South Island Kaka, Kereru (Wood Pigeon), Mohua (Yellowhead), Red-crowned Parakeet, Fantail, Bellbird and Tui. There are many more species that may also be seen, our knowledgeable expedition guides will be listening for bird calls and keeping a close watch in overhead canopies and the surrounding shrubs to identify further species. During our time in Paterson Inlet there will also be the opportunity to explore the quirky town centre Oban in Halfmoon Bay where a drink with a view can be enjoyed at the iconic South Sea Hotel and there are some beautiful walks in the surrounding forests.

Day 6: Dunedin

This morning sail into the beautiful Otago Harbour, watch closely for Northern Royal Albatross at the Taiaroa Head Albatross Colony. From our berth at Port Chalmers explore the famed fashion-forward city of Dunedin, the Edinburgh of the south, and its rich history as the gateway to Otago. Explore the scenic Otago Peninsula where Sea Lions rest and Yellow-eyed Penguins can be spotted in one of their last mainland strongholds, and where the beautiful farmed hills roll down towards white sand beaches.

Day 7: Akaroa

Heritage Adventurer will make her way through the Akaroa heads and anchor in the sheltered waters off Canterbury's largest harbour. It was here, beneath the eroded volcanic hills of Banks Peninsula, that the French attempted to settle in 1840. The French connection remains to this day with a certain je ne sais quoi imbuing the township of Akaroa. This afternoon visit the Barry's Bay

Cheese Factory and French Farm Vineyard at the head of the harbour as well as enjoy the opportunity to explore Akaroa or take one of the local nature walks.

Day 8: Wellington

New Zealand's 'coolest little capital', Wellington, is an exceptional natural harbour, where Heritage Adventurer will be docked in the centre of the action. From here you can easily explore this vibrant city on foot. Visit the cable car, explore the world renowned Zealandia nature reserve, discover the Botanic Gardens and visit Te Papa New Zealand's national museum. on foot. Visit the cable car, explore the world renowned Zealandia nature reserve, discover the Botanic Gardens and visit Te Papa New Zealand's national museum.

Day 9: Nelson/ Abel Tasman National Park

The spiritual home of Heritage Expeditions and one of the best, yet seldom-visited ports of New Zealand, join your naturalists to discover the incredibly beautiful coastal scenery of the Abel Tasman National Park or take the opportunity to discover the regions culinary delights, artisan crafts and world-class wines.

Days 10: Marlborough

This morning Heritage Adventurer sails into the sheltered waters of the Marlborough Sounds, a beautiful labyrinth of waterways intersecting the northern shores of the South Island. Take the opportunity to explore a coastal trail through the lush regenerating forest and watch for native birds including Saddleback, Parakeets and Robins on one of the island nature reserves.

Day 11: Napier



Wild Earth Travel
Small Ships, Big Adventures

0800 945 3327 (within New Zealand) | +64 (0) 3 365 1355 | **1800 107 715** (within Australia)

info@wildearth-travel.com | **wildearth-travel.com**



Wild Earth Travel

Small Ships, Big Adventures

wildearth-travel.com

info@wildearth-travel.com

Itineraries are subject to change.

The Art Deco capital of New Zealand, and possibly the world, the post-quake city of Napier lies at the heart of the thriving Hawkes Bay. Immerse yourself in the Art Deco world of central Napier with its quaint shops and unrivalled architecture before venturing to the world-renowned wineries of the Hawkes Bay famed for their exceptional Syrah and Chardonnay vintages. Alternatively, join your naturalists on a visit to the exceptional Cape Kidnappers Gannet Colony.

Day 12: At Sea

Sailing up the scenic North Island, enjoy a day at sea attending lectures, relaxing on board or catching up on your photos and journaling as we head towards Tauranga.

Day 13: Tauranga/Rotorua

From our berth in Tauranga, we drive inland, passing the rich horticultural region of the Bay of Plenty as we travel to the geothermal heartland of Rotorua. Marvel at the abundance of steam vents, geysers and bubbling mud pools as we explore one of the most geologically active regions on the planet accompanied by expert local guides.

Day 14: Auckland

This morning Heritage Adventurer arrives in Auckland, the City of Sails, where she will berth in the central city waterfront, following breakfast disembark and head to the airport or continue your exploration of New Zealand. In case of unexpected delays we ask you not to book any onward travel until after midday today.

Please note:

Wild Earth Travel
Small Ships, Big Adventures

0800 945 3327 (within New Zealand) | +64 (0) 3 365 1355 | **1800 107 715** (within Australia)

info@wildearth-travel.com | **wildearth-travel.com**

Wild Earth Travel

Small Ships, Big Adventures

wildearth-travel.com

info@wildearth-travel.com

YOUR SHIP: HERITAGE ADVENTURER

YOUR SHIP:	Heritage Adventurer
VESSEL TYPE:	Expedition Ship
LENGTH:	124 metres
PASSENGER CAPACITY:	140
BUILT/REFURBISHED:	1991

Heritage Adventurer is a true pioneering expedition vessel of exceptional pedigree. Often referred to as the 'Grande Dame of Polar Exploration' due to her celebrated history and refined design, she was purpose-built for adventure in 1991 at Finland's Rauma shipyard and specifically designed for Polar exploration. Setting a peerless standard in authentic expedition travel, Heritage Adventurer (formerly known as MS Hanseatic) combines the highest passenger ship ice-class rating (1A Super) with an impressive history of Polar exploration. Having held records for the most northern and southern Arctic and Antarctic navigations, and for traversing both the Northwest and Northeast Passages, makes Heritage Adventurer perfect for pioneering New Zealand-based Heritage Expeditions signature experiential expedition travel. Originally designed to accommodate 184 guests, Heritage Adventurer now welcomes just 140 expeditioners ensuring spacious, stylish and comfortable voyages, while a fleet of 14 Zodiacs ensures all guests are able to maximise their expedition adventure. Heritage Adventurer proudly continues our traditions of exceptional, personalised expedition experiences as Heritage Expeditions flagship.

Observation Lounge - One of the most celebrated and best-known features of Heritage Adventurer is the awe-inducing Observation Lounge, Library and Bar. Located on Deck 7 and perched directly above the Bridge, enjoy sweeping 270-degree views through floor to ceiling windows, perfect for wildlife spotting and quick access to the outer deck. Bring your binoculars to spot wildlife, observe the ever-changing landscape, write in your journal or relax with a book.

Observation Deck - Enjoy 360-degree views from the highest point on the ship. The Observation Deck sits above the Observation Lounge and provides exceptional outside viewing options. Stretching the full width of the vessel, this is the perfect spot to take in the surrounding land and seascapes. Perfect on a sunny day, recline in the comfortable sun loungers protected from the wind and elements and watch your voyage unfold.

The Bridge - No expedition is complete without visiting Heritage Adventurer's busy nerve centre. Located on Deck 6, Heritage Expeditions' Open Bridge Policy means you are welcome to observe the Captain and crew at work while enjoying some of the ship's best views. It's a fascinating place to learn about navigation and vessel operations, however please note the Bridge will be closed when departing or arriving at port.

Dining Room - Indulge in fine international cuisine from our talented chefs in the lavish surrounds of our Dining Room on Deck 4. Sensational 270-degree views provide a stunning backdrop to meals here along with an international wine list featuring many outstanding regional wines. With relaxed seating arrangements, all guests can enjoy dining in a single sitting from

Wild Earth Travel

Small Ships, Big Adventures

0800 945 3327 (within New Zealand) | +64 (0) 3 365 1355 | **1800 107 715** (within Australia)

info@wildearth-travel.com | wildearth-travel.com

Wild Earth Travel

Small Ships, Big Adventures

wildearth-travel.com

info@wildearth-travel.com

hearty breakfasts setting you up for the day's adventure to sumptuous lunches and multi-course evening dining.

Bistro - Simple fast and delicious meals and snacks are on offer in our relaxed Bistro on Deck 6. Perfect for early risers to enjoy tea, coffee and light breakfast options the Bistro provides great views and opens directly onto a covered and heated teak-deck outdoor dining area.

The Bar and Lounge - The social hub of Heritage Adventurer, the Bar and Lounge on Deck 5 features seating for all guests. Enjoy a beverage at the bar, sink into an armchair, relax on one of the many spacious loungers and watch the world go by through the panoramic windows or make new friends at the communal seating. This multi-tasking space also doubles as the location of daily briefings and evening recaps with the expedition team.

The Gym - Featuring spectacular ocean views, the well-equipped gym is adjacent to the pool, hot tub and sauna in Deck 7's wellbeing zone. Maintain your routine with an elliptical cross trainer, treadmill, rowing machine, stationary bikes, TRX as well as free weights, yoga mats and fitness balls. Towels are provided with change room and shower amenities nearby.

Sauna and Steam Room - True to her Nordic origins, Heritage Adventurer features a dry-heat Finnish sauna and European steam room on Deck 7. Perfect for warming up post Polar plunge or unwinding after a day's adventures, the sauna and steam room include change room facilities, showers and towels.

Swimming Pool and Hot Tub - Surrounded by relaxed teak seating including sun loungers, the open-air saltwater pool can be heated or chilled. Encased in glass the hot tub ensures all-weather use, perfect for those who like to relax with a view following a day of exploring.

Lectures and Presentations - Enjoy informative and entertaining lectures on history, biology, wildlife, and ecology in the comfort

of the Presentation Theatre. With state-of-the-art audio-visual equipment, our world-renowned expedition team will bring your adventure to life through interactive presentations and discussions.



discussions.

Wild Earth Travel

Small Ships, Big Adventures

0800 945 3327 (within New Zealand) | +64 (0) 3 365 1355 | **1800 107 715** (within Australia)

info@wildearth-travel.com | wildearth-travel.com

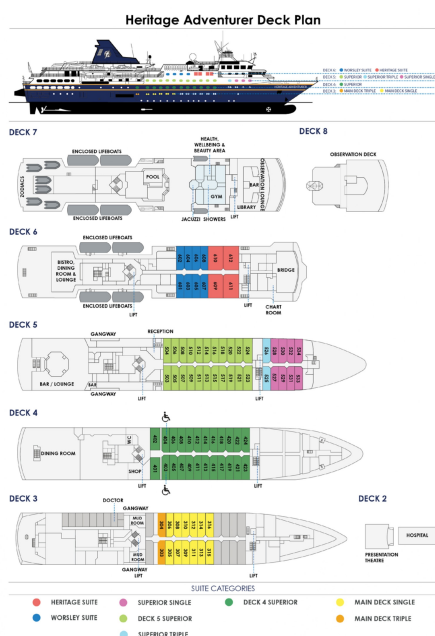
Wild Earth Travel

Small Ships, Big Adventures

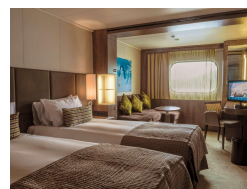
wildearth-travel.com

info@wildearth-travel.com

INSIDE YOUR SHIP



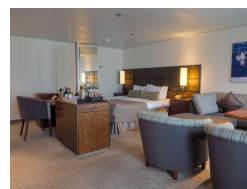
Deck 4 Superior



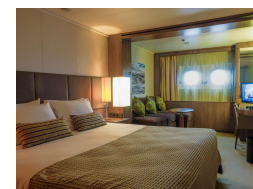
Deck 5 Superior



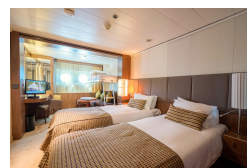
Heritage Suite



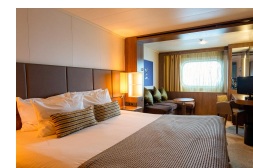
Main Deck Single



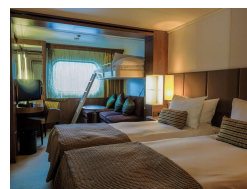
Main Deck Triple



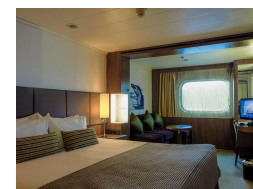
Superior Single



Superior Triple



Worsley Suite



Wild Earth Travel
Small Ships, Big Adventures

0800 945 3327 (within New Zealand) | +64 (0) 3 365 1355 | **1800 107 715** (within Australia)

info@wildearth-travel.com | wildearth-travel.com

Wild Earth Travel

Small Ships, Big Adventures

wildearth-travel.com

info@wildearth-travel.com

PRICING

03-Mar-2026 to 14-Mar-2026

Main Deck Triple	8169 AUD pp
Superior Triple	9812 AUD pp
Deck 4 Superior	11646 AUD pp
Deck 5 Superior	12311 AUD pp
Main Deck Single	14638 AUD pp
Superior Single	15778 AUD pp
Worsley Suite	15778 AUD pp
Heritage Suite	21882 AUD pp

11-Nov-2026 to 23-Nov-2026

Main Deck Triple	7654 AUD pp
Superior Triple	9146 AUD pp
Deck 4 Superior	10798 AUD pp
Deck 5 Superior	11418 AUD pp
Main Deck Single	13558 AUD pp
Worsley Suite	14614 AUD pp
Superior Single	14614 AUD pp
Heritage Suite	20150 AUD pp



Wild Earth Travel

Small Ships, Big Adventures

wildearth-travel.com

info@wildearth-travel.com

SPECIAL OFFERS

Online prices reflect current special offers and may vary. This promotion is time - limited and subject to availability. Terms and conditions apply. For more information, please contact us.

Wild Earth Travel

Small Ships, Big Adventures

0800 945 3327 (within New Zealand) | +64 (0) 3 365 1355 | **1800 107 715** (within Australia)

info@wildearth-travel.com | **wildearth-travel.com**