

# Wild Earth Travel

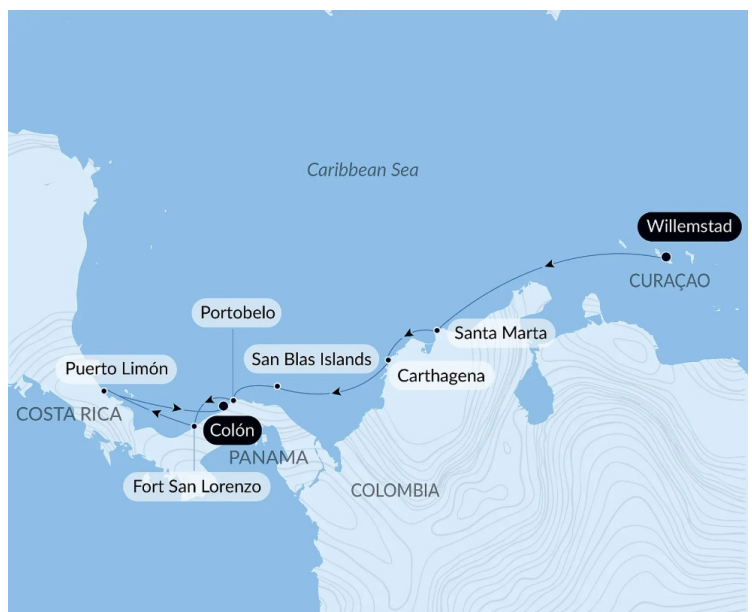
*Small Ships, Big Adventures*

**wildearth-travel.com**

**info@wildearth-travel.com**

## NATURAL SANCTUARIES & HERITAGE OF THE CARIBBEAN LUXURY CRUISE

Set off to discover the secrets of Central America by crossing the Caribbean Sea. During this cruise, historic cities will reveal their splendour and turquoise waters will open the way to beaches of fine sand, caressing the shores where lush forest meets the horizon. In this enchanted setting, you will set off to encounter local communities and their traditions, you will stroll around exceptional historic sites, and you will marvel at the beauty of the underwater life of idyllic islets. You will experience an exciting adventure in which heritage meets tropical nature, awakening dreams of exploration and unforgettable memories.



### ITINERARY

#### Day 1 WILLEMSTAD

The capital of Curaçao stretches along the edge of St Ann's Bay on the island's south-west coast, and its historic centre is a UNESCO World Heritage site. A profusion of colour awaits you on the Handelskade quays, where it's a pleasure to stroll alongside the merchants' houses whose rainbow façades characterise Dutch colonial architecture. A few paces from here is the Floating Market, a true feast for the eyes and tastebuds. You can also visit Fort Rif and the Maritime Museum, or, in the quieter streets of Otrobanda, you'll enjoy browsing the craft shops and old-time bars at your own leisurely pace.

#### Day 2 AT SEA

Wild Earth Travel

*Small Ships, Big Adventures*

**0800 945 3327** (within New Zealand) | +64 (0) 3 365 1355 | **1800 107 715** (within Australia)

info@wildearth-travel.com | **wildearth-travel.com**



# Wild Earth Travel

*Small Ships, Big Adventures*

**wildearth-travel.com**

**info@wildearth-travel.com**

During your journey at sea, make the most of the many services and activities on board. Treat yourself to a moment of relaxation in the spa or stay in shape in the fitness centre. Depending on the season, let yourself be tempted by the swimming pool or a spot of sunbathing. This journey without a port of call will also be an opportunity to enjoy the conferences or shows proposed on board, depending on the activities offered, or to do some shopping in the boutique or to meet the PONANT photographers in their dedicated space. As for lovers of the open sea, they will be able to visit the ship's upper deck to admire the spectacle of the waves and perhaps be lucky enough to observe marine species. A truly enchanted interlude, combining comfort, rest and entertainment.

## Day 3 SANTA MARTA

Santa Marta, located in the north of the Caribbean coast of Colombia, is a seaside town dominated by the majestic Sierra Nevada. The highest coastal chain of mountains in the world, it is listed as a Biosphere Reserve by UNESCO for the diversity of its fauna and flora. At the heart of the first Spanish colony, you will discover the heritage of the Tairona, the largest indigenous civilisation in Colombia. The eponymous national park offers you sumptuous landscapes, combining lush tropical forest and beautiful fine sandy beaches edged with crystal-clear water. The archaeological heritage and the Pre-Columbian treasures of the region are a source of endless enchantment.

## Days 4 - 5 CARTAGENA

A splendid harbour city in the north of Columbia, a source of inspiration for the Colombian writer Gabriel Garcia Marquez, Cartagena will win you over with its well-preserved colonial architecture, and warm friendly atmosphere. You can visit the sumptuous UNESCO World Heritage fortified historical centre whose churches and houses have magnificent multi-coloured façades. A witness of Spanish domination, the San Felipe de Barajas fortress stands on top of a hill from where you can admire views over the whole city. The Las Bovedas neighbourhood will charm you with its arcades, used as prison cells during the 19th century civil wars.

## Day 6 SAN BLAS ISLANDS

Located on the north-east coast of Panama, the San Blas archipelago is a

string of coral islands in the heart of the Caribbean Sea. More than 300 islands and cays cover an area of 300 square kilometres offering travellers a multitude of treasures. Sheltered behind a long coral reef, the San Blas Islands are full of enchanting anchorages. The long sandy white beaches bound by crystal-clear waters will allow you to relax and enjoy incredible marine fauna before engaging with the Kunas Indian community. Still subsisting on hunting and fishing, they will welcome you in their villages of bamboo houses gathered near the beaches.

## Day 7 PORTOBELO

In the province of Colon, along the magnificent Caribbean coast of Panama, Portobelo is located not far from the famous canal. Given its name of "beautiful port" by Christopher Columbus, who discovered it in 1502, this charming and peaceful bay was one of the most important ports for the shipping of precious metals from the New World to Spain. Don't miss a visit to its fortifications, listed as a UNESCO World Heritage Site. The town has preserved the strong religious and cultural traditions of its colonial past, such as the veneration of the Black Christ and a strongly-rooted Afro-Caribbean culture. The Congo ceremonies retrace the story of Spanish domination over black slaves through traditional dances and music.

## Day 8 FORT SAN LORENZO (COLÓN)

In the Colon District, Fort San Lorenzo faces the sea, its canons pointing towards the horizon as they used to under the Spanish Crown. This construction is part of a group of buildings exemplifying the military architecture of the 17th and 18th centuries along the Caribbean coast of Panama, hence its status as a UNESCO World Heritage Site. Wander along the fort's alleyways accompanied by the melodious singing of the birds that have made the surrounding forest their home. Enjoy an unforgettable port of call combining history and walking in nature.

## Day 9 PUERTO LIMON

We're pretty sure the little coastal town of Puerto Limon will completely win your heart. It is located on the Caribbean sea. Just beyond the harbour, Playa Bonita creek opens its arms to a haven of beauty rimmed by clear blue waters and shaded by giant peach-palms. If you wish to explore the lush green areas in the town, it's worth taking a stroll through the lemon groves that give Puerto

Wild Earth Travel

*Small Ships, Big Adventures*

**0800 945 3327** (within New Zealand) | +64 (0) 3 365 1355 | **1800 107 715** (within Australia)

info@wildearth-travel.com | **wildearth-travel.com**



# Wild Earth Travel

*Small Ships, Big Adventures*

**wildearth-travel.com**

**info@wildearth-travel.com**

Limon its name. You'll have all the time in the world to mosey around the streets scattered with multicoloured wooden makeshift stalls. These makeshift bars with their raffia roofs offer fresh juices blended just for you.

## Day 10 COLÓN

Colon is the second largest city in Panama, at the Caribbean entrance of the Panama Canal. Colon is today an important port, and the free trade zone created in 1953 contributed greatly to the development of the city. Colon was founded in 1850 by Americans working on the Panama railroad connecting the Atlantic and Pacific coasts through the isthmus of Panama; the city rapidly overshadowed the older Caribbean ports of Panama when the canal opened.

Please note:

Itineraries are subject to change.

**Wild Earth Travel**

*Small Ships, Big Adventures*

**0800 945 3327** (within New Zealand) | +64 (0) 3 365 1355 | **1800 107 715** (within Australia)

info@wildearth-travel.com | **wildearth-travel.com**



# Wild Earth Travel

*Small Ships, Big Adventures*

**wildearth-travel.com**

**info@wildearth-travel.com**

## YOUR SHIP: LE BELLOT

<b>YOUR SHIP:</b>	<b>Le Bellot</b>
<b>VESSEL TYPE:</b>	<b>Luxury Expedition / Cruise Ship</b>
<b>LENGTH:</b>	<b>131 metres</b>
<b>PASSENGER CAPACITY:</b>	<b>184</b>
<b>BUILT/REFURBISHED:</b>	<b>2019-2020</b>

Featuring innovative and environmentally-friendly equipment, elegantly designed staterooms, spacious suites with large windows, and lounge areas that open onto the outside, this new limited-capacity yacht boasting just 92 staterooms and suites will offer you a truly unique cruising experience.

As the first ship in a new series that remains true to the Ponant spirit, Le Bellot will embody the unique atmosphere that is the cruise line's hallmark: a subtle blend of refinement, intimacy and comfort.

Aboard this ship that flies the French flag, you will experience the incomparable pleasure of an intimate cruise, with the possibility of exploring an ever-increasing range of destinations in an ethnic-chic ambiance with luxury service.

Experience a luxurious setting where the accent is on authenticity and passion for travel.

### RESTAURANTS

As it is an essential part of French culture, gastronomy will naturally have pride of place aboard this new ship.

To the back of Deck 4, you will find a 260 m<sup>2</sup> panoramic restaurant which can accommodate all of our passengers in a single sitting. Designed differently to that on our other ships, this

dining area, which opens onto the outside, will have a buffet of salads, desserts and cheeses at your disposal. Our discreet and attentive crew will provide table service for hot meals.

In a relaxed atmosphere, an outdoor grill on Deck 3 will serve grilled meats with a variety of salads and desserts.

### PUBLIC AREAS

Le Bellot has many common areas that are designed and equipped to meet all of your needs while preserving the intimacy of each passenger.

A 140 m<sup>2</sup> reception area includes:

A reception/concierge desk,

An excursions desk,

The ship's administrative services,

The sales office, manned by our Guest Relations Officer,

Our 50 m<sup>2</sup> boutique which sells clothing, jewellery, beauty products, postcards and various accessories,

Toilets accessible to passengers with reduced mobility.

A new hydraulic platform with adjustable height provides:

Easier boarding than on any other cruise ship,

Easier Zodiac embarkation and disembarkation for expeditions,

Easier access to the sea for swimming and practising various water sports such as kayaking or paddle-boarding.

A pool deck offering:

A pool with a panoramic view, equipped with a counter-current swimming system,

A pleasant solarium,

An outdoor bar and lounge with armchairs and sofas.

A 200 m<sup>2</sup> main lounge which can accommodate all of our passengers to share convivial moments and to host activities



Wild Earth Travel  
*Small Ships, Big Adventures*

**0800 945 3327** (within New Zealand) | +64 (0) 3 365 1355 | **1800 107 715** (within Australia)

info@wildearth-travel.com | **wildearth-travel.com**



# Wild Earth Travel

*Small Ships, Big Adventures*

**wildearth-travel.com**

**info@wildearth-travel.com**

organised during the day or evening.

Lastly, a theatre that seats 188, equipped with:

The latest sound and lighting technology,

A LED wall as the stage backdrop, for the projection of high-resolution images and videos.



and videos.

**Wild Earth Travel**

*Small Ships, Big Adventures*

**0800 945 3327** (within New Zealand) | +64 (0) 3 365 1355 | **1800 107 715** (within Australia)

info@wildearth-travel.com | **wildearth-travel.com**

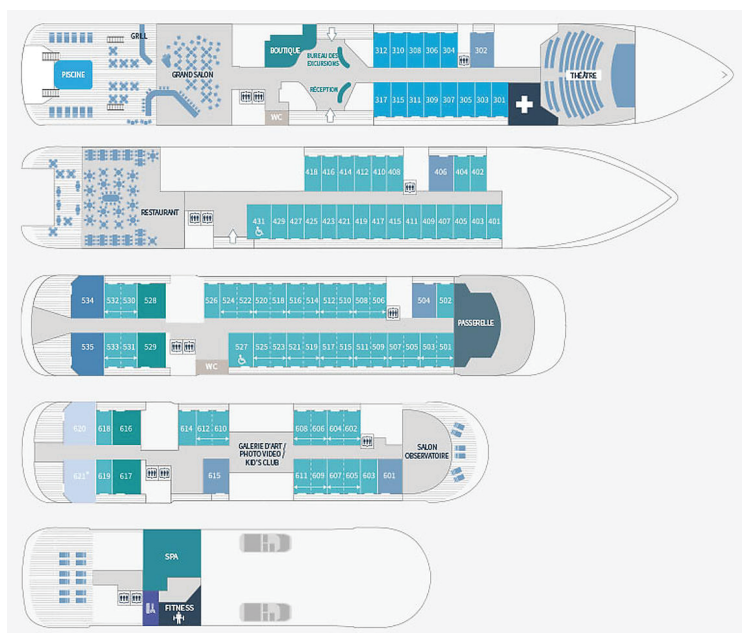
# Wild Earth Travel

*Small Ships, Big Adventures*

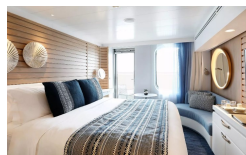
[wildearth-travel.com](http://wildearth-travel.com)

[info@wildearth-travel.com](mailto:info@wildearth-travel.com)

## INSIDE YOUR SHIP



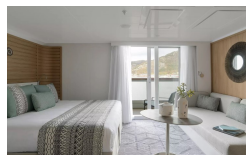
Deluxe Stateroom



Deluxe Suite Deck 3



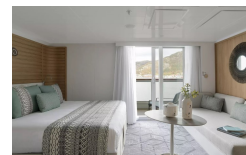
Deluxe Suite Deck 5



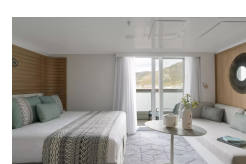
Grand Deluxe Suite



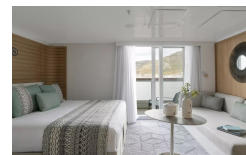
Deluxe Suite



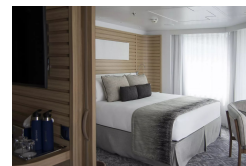
Deluxe Suite Deck 4



Deluxe Suite Deck 6



Grand Deluxe Suite Deck 5



Wild Earth Travel  
*Small Ships, Big Adventures*

0800 945 3327 (within New Zealand) | +64 (0) 3 365 1355 | 1800 107 715 (within Australia)

[info@wildearth-travel.com](mailto:info@wildearth-travel.com) | [wildearth-travel.com](http://wildearth-travel.com)

# Wild Earth Travel

*Small Ships, Big Adventures*

**wildearth-travel.com**

**info@wildearth-travel.com**

## PRICING

### 26-Nov-2025 to 03-Dec-2025

Deluxe Stateroom	6520 AUD pp
Prestige Stateroom Deck 4	7350 AUD pp
Prestige Stateroom Deck 5	7720 AUD pp
Prestige Stateroom Deck 6	8160 AUD pp
Deluxe Suite Deck 4	10630 AUD pp
Deluxe Suite Deck 5	10630 AUD pp
Deluxe Suite Deck 6	10630 AUD pp
Deluxe Suite	10630 AUD pp
Prestige Suite Deck 5	12820 AUD pp
Prestige Suite Deck 6	13400 AUD pp
Privilege Suite Deck 6	13840 AUD pp
Privilege Suite	13840 AUD pp
Grand Deluxe Suite	14280 AUD pp
Grand Deluxe Suite Deck 6	14280 AUD pp
Owner's Suite	17740 AUD pp
8 Day Cruise	0 pp

### 12-Nov-2026 to 21-Nov-2026

Deluxe Stateroom	7690 AUD pp
Prestige Deck 4	8520 AUD pp
Prestige Deck 5	8940 AUD pp
Prestige Deck 6	9440 AUD pp
Deluxe Suite Deck 4	12280 AUD pp
Deluxe Suite Deck 5	12280 AUD pp
Deluxe Suite Deck 6	12280 AUD pp
Deluxe Suite Deck 3	12280 AUD pp
Prestige Deck 5 Suite	14790 AUD pp
Prestige Deck 6 Suite	15460 AUD pp
Privilege Suite Deck 6	15950 AUD pp
Privilege Suite Deck 5	15950 AUD pp
Grand Deluxe Suite Deck 6	16460 AUD pp
Grand Deluxe Suite Deck 5	16460 AUD pp

Wild Earth Travel

*Small Ships, Big Adventures*

**0800 945 3327** (within New Zealand) | +64 (0) 3 365 1355 | **1800 107 715** (within Australia)

info@wildearth-travel.com | wildearth-travel.com



# Wild Earth Travel

*Small Ships, Big Adventures*



**wildearth-travel.com**

**info@wildearth-travel.com**

## SPECIAL OFFERS

Online prices reflect the current brochure fare savings of up to 30%. Prices may change based on demand. Terms and conditions apply. This special offer is subject to availability. Please contact us for more details.



**Wild Earth Travel**

*Small Ships, Big Adventures*

**0800 945 3327** (within New Zealand) | +64 (0) 3 365 1355 | **1800 107 715** (within Australia)

info@wildearth-travel.com | **wildearth-travel.com**