



Wild Earth Travel

Small Ships, Big Adventures

wildearth-travel.com

info@wildearth-travel.com

NATURAL SANCTUARIES & CARIBBEAN ENCOUNTERS LUXURY CRUISE

On this 10-day expedition cruise with PONANT, contemplate the various nuances of green offered by the lush forests of Belize and Honduras, and admire the Caribbean Sea's many shades of blue, while delving into fascinating cultures. The idyllic landscapes and captivating encounters with the local population will make your journey unforgettable, as you discover Central America's most beautiful sites.

During your odyssey aboard Le Champlain, expect to hear birdsong and see dense tropical forests and the intertwined roots of mangrove burgeoning with life. From Punta Sal, you will explore the Jeannette Kawas National Park, a haven of peace where the forest melts into the sea, allowing you to contemplate unique biodiversity. You will then explore a completely undiscovered island, Guanaja, which is full of treasures. Just its former name, the green island, is enough to conjure up its many gems. Here you will discover the Caracoles people, who take pride in their traditions, on the small key of Bonacca, also known as The Cay, with its mangroves, tropical rainforests and sandy beaches sheltering rich wildlife.

La Ensenada is another little-known and pristine paradise; it invites you discover its unique ecosystem, aboard traditional local boats, and explore its impressive mangroves, which shelter rich biodiversity. You can also take the time to explore this picturesque and authentic village, making the most of a dreamed-of opportunity to meet a welcoming community and discover their customs and traditions.

The stunning nature here will reveal itself in the heart of a Caribbean atmosphere imbued with history and tradition. The Garifuna people will welcome you on the small island of Chachauate in the Cayos Cochinos with a unique performance, a visit of their village and the possibility of tasting their singular gastronomy. In the small town of Placencia, a perfect spot to spend a moment relaxing on the main street running along the seafront, you will be able to hear all about the Mopan and Kekchi Mayan civilisations, a fascinating story that is inextricably linked to the region. You will also fall in love with its many mangroves and its exceptional sea beds. You will discover the local arts and crafts throughout your journey, thus learning about the heritage of these Caribbean shores.

Half Moon Caye, the picture postcard view of Belize, is also on the programme of this cruise; in this enchanting place, you will be able to see nesting frigatebirds and red-footed boobies close up. The Great Blue Hole cenote, a UNESCO World Heritage Site, is one of the world's most stunning diving sites. On Water Caye, the Mesoamerican Barrier Reef System is also teeming with many treasures for those who venture into its waters.

Wild Earth Travel

Small Ships, Big Adventures

0800 945 3327 (within New Zealand) | +64 (0) 3 365 1355 | **1800 107 715** (within Australia)

info@wildearth-travel.com | **wildearth-travel.com**

Wild Earth Travel

Small Ships, Big Adventures

wildearth-travel.com

info@wildearth-travel.com



Kawas as a tribute to the environmental activist murdered in 1995. Between coral reef and green jungle, the park unveils a succession of white sandy coves along its coastline giving onto crystal-clear waters in a marvellous palette of blues. Inland, the tropical forest unfurls, a real reserve for wildlife that you will be able to explore in a Zodiac dinghy between mangroves, lagoons and rivers.

Day 3 GUANAJA

The island of Guanaja is a little-known paradise, one of Honduras' real treasures, and will reveal itself to you between lush vegetation, idyllic deserted beaches and unique encounters with the local population of Bonacca (also known as The Cay). Off the coast, the wildest and most remote of the Bay Islands rolls out its coral reefs, which attract diving enthusiasts from around the world. This jewel of the Caribbean Sea also shelters a mangrove whose secrets you will attempt to discover as you explore it during a Zodiac outing. Then, during hikes, accompanied by our team of naturalist-guides, you will enter the heart of a rainforest dotted with majestic waterfalls and home to many bird species, like macaws. Here, the Caracoles people will welcome you and share their traditions with you on the small key of Bonacca (also known as The Cay). Do not miss this exceptional encounter!

Day 4 CAYOS COCHINOS

Lying northeast of La Ceiba, the Bay Islands are home to certain treasures that float on a palette of turquoise, dark or celadon blues. Les Cayos Cochinos, an archipelago made up of two islands, Cayo Menor and Cayo Grande, and thirteen coral cays, is one of them. Situated on the Mesoamerican Barrier Reef System in a marine reserve created in 1994, its underwater scenery features coral gardens in which multitudes of tropical fish scatter and provide you with a feast for the eyes. In this idyllic setting, you will infinitely enjoy swimming while other water-based activities will offer a delightful interlude in the heart of exceptional nature.

Day 5 CUERO Y SALADO

In the heart of the Central American isthmus, Honduras is a little-known paradise boasting rich biodiversity, as evidenced by the Cuero y Salado National Park, a real refuge for wildlife created in 1987. This magnificent reserve, located on the estuaries of the Cuero, Salado and San Juan rivers, will provide you with fantastic opportunities for observing fauna and the plant

its waters.

ITINERARY

Day 1 BELIZE CITY

Belize City is the former capital and the country's largest town. Located on the Caribbean Sea, this lively little town symbolises the fusion of British, Spanish and Maya cultures. The departure point for flights over the Great Blue Hole and the barrier reef, it's also the ideal gateway for discovering the treasures of Maya architecture: in the heart of the jungle, the grandiose and mysterious ruins of temples and palaces at the Lamanai and Xunantunich sites await you. Another unmissable experience: a trip to the mouth of the Belize River: with a little luck and care, you'll get a glimpse of manatees, dolphins, crocodiles, iguanas and many aquatic bird species.

Day 2 PUNTA SAL

In the municipality of Tela lies Punta Sal National Park, renamed Jeannette

Wild Earth Travel

Small Ships, Big Adventures

0800 945 3327 (within New Zealand) | +64 (0) 3 365 1355 | 1800 107 715 (within Australia)

info@wildearth-travel.com | wildearth-travel.com



Wild Earth Travel

Small Ships, Big Adventures

wildearth-travel.com

info@wildearth-travel.com

kingdom. In a boat going across the mangrove, accompanied by the song of birds answering each other, you will not tire of observing the bright plumage livening up the thick green forest with bursts of colour. As you watch the monkeys dancing from branch to branch, you will not know which way to turn. And if you are lucky, turtles and caimans will also make an appearance.

Day 6 LA ENSENADA

Lying on the Honduran shores, the small community of La Ensenada will charm you with its gentle way of life and breathtaking landscapes. Make the most of a timeless moment to go and meet the local population and learn more about their day-to-day lives and their customs. The mangrove, a unique ecosystem teeming with life, will also reveal itself to you with the possibility of a river cruise aboard a local boat.

Day 7 WATER CAYE, ISLA UTILA

The Bay Islands archipelago is home to stunning cays, sheltered coral islets with warm, crystal-clear turquoise waters. Off the island of Utila, the white-sand beaches lined with palms and coconut trees and the reefs of the deserted islet called Water Caye offer a picture-postcard setting that will delight fans of swimming and snorkelling.

Day 8 PLACENCIA

Placencia beckons travellers with the opalescence of its idyllic beaches and the blue hues of the Caribbean Sea that edges it. Lying in the south of Belize, in the Stann Creek District, this former fishing village exudes an Afro-Caribbean atmosphere in an unspoiled paradise combining brightly-coloured traditional houses and enchanting scenery. A veritable nature sanctuary both on land and at sea, Placencia has become an increasingly popular eco-destination in the Caribbean, particularly with diving and marine life enthusiasts. Its stunning lagoon is home to manatees, saltwater crocodiles and dolphins, among others, as well as numerous species of tropical fish. In addition to an excursion into the mangrove and some snorkelling, you will be able to discover the Mopan and Kekchi Mayan civilisations.

Day 9 HALF MOON CAYE

The tropical green crescent of Half Moon Caye is a natural monument of Belize stretching out over crystal-clear waters. The appeal of the oldest protected marine and ornithological area in Central America stems from its beaches lined with coconut trees, but most importantly from its incredible underwater world, which you will be able to explore with fins, mask and snorkel. Corals, sponges, sea turtles, spotted eagle rays, eels and groupers live in the turquoise waters, while on land the coastal forest is home to amusing geckos and a large colony of red-footed boobies, spectacular divers that penetrate the water at high speed to feed on small fish and squid.

Day 10 BELIZE CITY

Belize City is the former capital and the country's largest town. Located on the Caribbean Sea, this lively little town symbolises the fusion of British, Spanish and Maya cultures. The departure point for flights over the Great Blue Hole and the barrier reef, it's also the ideal gateway for discovering the treasures of Maya architecture: in the heart of the jungle, the grandiose and mysterious ruins of temples and palaces at the Lamanai and Xunantunich sites await you. Another unmissable experience: a trip to the mouth of the Belize River: with a little luck and care, you'll get a glimpse of manatees, dolphins, crocodiles, iguanas and many aquatic bird species.

Please note:

Itineraries are subject to change.



Wild Earth Travel

Small Ships, Big Adventures

wildearth-travel.com

info@wildearth-travel.com

YOUR SHIP: LE CHAMPLAIN

YOUR SHIP:	Le Champlain
VESSEL TYPE:	Luxury
LENGTH:	127 metres
PASSENGER CAPACITY:	92 cabins
BUILT/REFURBISHED:	2017/2018

Featuring innovative and environmentally-friendly equipment, elegantly designed cabins, spacious suites with large windows, and lounge areas that open onto the outside, this new limited-capacity yacht boasting just 92 cabins and suites will offer you a truly unique cruising experience.

As the first ship in a new series, Le Champlain will embody the unique atmosphere that is the cruise line's hallmark: a subtle blend of refinement, intimacy and comfort.

Aboard this ship that flies the French flag, you will experience the incomparable pleasure of an intimate cruise, with the possibility of exploring an ever-increasing range of destinations in an ethnic-chic ambiance with luxury service.

Experience a luxurious setting where the accent is on authenticity and passion for travel.

RESTAURANTS

As it is an essential part of French culture, gastronomy will naturally have pride of place aboard this new ship. Through its two restaurants, Le Champlain will invite you on a journey to elegance and epicureanism.

In a relaxed atmosphere, a first dining area located on Deck 3 and able to seat 70 will serve grilled meats daily, along with a

variety of salads and desserts.

To the back of Deck 4, you will find a 260 m² panoramic restaurant which can accommodate all of our passengers in a single sitting. Designed differently to that on our other ships, this dining area, which opens onto the outside, will have a buffet of salads, desserts and cheeses at your disposal. Our discreet and attentive crew will provide table service for hot meals.

PUBLIC AREAS

Like Le Boreal and its sisterships, Le Champlain has many common areas that are designed and equipped to meet all of your needs while preserving the intimacy of each passenger.

A 140 m² reception area includes: A reception/concierge desk, An excursions desk, The ship's administrative services, The sales office, manned by our Guest Relations Officer, Our 50 m² boutique which sells clothing, jewellery, beauty products, postcards and various accessories, Toilets accessible to passengers with reduced mobility.

A new hydraulic platform with adjustable height provides: Easier boarding than on any other cruise ship, Easier Zodiac embarkation and disembarkation for expeditions, Easier access to the sea for swimming and practising various water sports such as kayaking or paddle-boarding.

A pool deck offering: A pool with a panoramic view, equipped with a counter-current swimming system, A pleasant solarium, An outdoor bar and lounge with armchairs and sofas.

A 200 m² main lounge which can accommodate all of our passengers to share convivial moments and to host activities organised during the day or evening.

Lastly, a theatre that seats 188, equipped with: The latest



Wild Earth Travel
Small Ships, Big Adventures

0800 945 3327 (within New Zealand) | +64 (0) 3 365 1355 | **1800 107 715** (within Australia)

info@wildearth-travel.com | **wildearth-travel.com**



Wild Earth Travel

Small Ships, Big Adventures

wildearth-travel.com

info@wildearth-travel.com

sound and lighting technology, A LED wall as the stage backdrop, for the projection of high-resolution images and videos.



and videos.



Wild Earth Travel

Small Ships, Big Adventures

0800 945 3327 (within New Zealand) | +64 (0) 3 365 1355 | **1800 107 715** (within Australia)

info@wildearth-travel.com | **wildearth-travel.com**

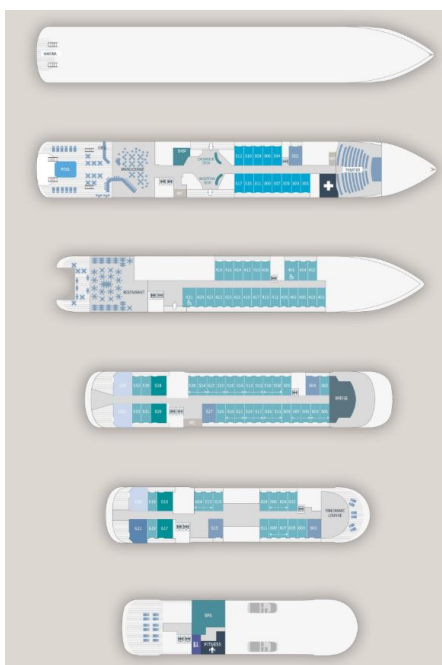
Wild Earth Travel

Small Ships, Big Adventures

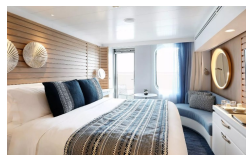
wildearth-travel.com

info@wildearth-travel.com

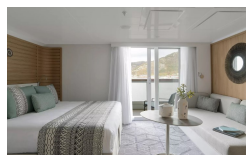
INSIDE YOUR SHIP



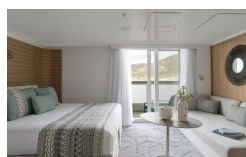
Deluxe Stateroom



Deluxe Suite Deck 4



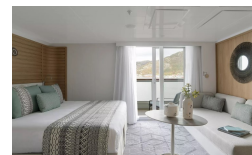
Deluxe Suite Deck 6



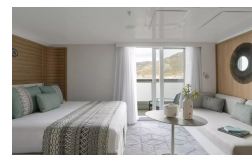
Grand Deluxe Suite Deck 6



Deluxe Suite



Deluxe Suite Deck 5



Grand Deluxe Suite



Owner's Suite



Wild Earth Travel
Small Ships, Big Adventures

0800 945 3327 (within New Zealand) | +64 (0) 3 365 1355 | 1800 107 715 (within Australia)

info@wildearth-travel.com | wildearth-travel.com

Wild Earth Travel

Small Ships, Big Adventures

wildearth-travel.com

info@wildearth-travel.com

PRICING

13-Dec-2025 to 22-Dec-2025

Deluxe Stateroom	10030 AUD pp
Prestige Stateroom Deck 4	10430 AUD pp
Prestige Stateroom Deck 5	10660 AUD pp
Prestige Stateroom Deck 6	10970 AUD pp
Deluxe Suite Deck 4	13840 AUD pp
Deluxe Suite Deck 6	13840 AUD pp
Deluxe Suite	13840 AUD pp
Deluxe Suite Deck 5	13840 AUD pp
Prestige Suite Deck 5	14690 AUD pp
Prestige Suite Deck 6	15090 AUD pp
Privilege Suite	15400 AUD pp
Privilege Suite Deck 6	15400 AUD pp
Grand Deluxe Suite	15780 AUD pp
Grand Deluxe Suite Deck 6	15780 AUD pp
Owner's Suite	19400 AUD pp

22-Dec-2025 to 31-Dec-2025

Deluxe Stateroom	10030 AUD pp
Prestige Stateroom Deck 4	10430 AUD pp
Prestige Stateroom Deck 5	10660 AUD pp
Prestige Stateroom Deck 6	10970 AUD pp
Deluxe Suite Deck 4	13840 AUD pp
Deluxe Suite	13840 AUD pp
Deluxe Suite Deck 5	13840 AUD pp
Deluxe Suite Deck 6	13840 AUD pp
Prestige Suite Deck 5	14690 AUD pp
Prestige Suite Deck 6	15090 AUD pp
Privilege Suite	15400 AUD pp
Privilege Suite Deck 6	15400 AUD pp
Grand Deluxe Suite	15780 AUD pp
Grand Deluxe Suite Deck 6	15780 AUD pp
Owner's Suite	19400 AUD pp



Wild Earth Travel

Small Ships, Big Adventures

wildearth-travel.com

info@wildearth-travel.com

PRICING

31-Dec-2025 to 09-Jan-2026

Deluxe Stateroom	11370 AUD pp
Prestige Stateroom Deck 4	11820 AUD pp
Prestige Stateroom Deck 5	12100 AUD pp
Prestige Stateroom Deck 6	12480 AUD pp
Deluxe Suite Deck 5	15900 AUD pp
Deluxe Suite Deck 4	15900 AUD pp
Deluxe Suite	15900 AUD pp
Deluxe Suite Deck 6	15900 AUD pp
Prestige Suite Deck 5	16920 AUD pp
Prestige Suite Deck 6	17370 AUD pp
Privilege Suite Deck 6	17740 AUD pp
Privilege Suite	17740 AUD pp
Grand Deluxe Suite Deck 6	18210 AUD pp
Grand Deluxe Suite	18210 AUD pp
Owner's Suite	19400 AUD pp

ADDITIONAL CHARGES:

Port Taxes 670 AUD pp



Wild Earth Travel
Small Ships, Big Adventures

0800 945 3327 (within New Zealand) | +64 (0) 3 365 1355 | **1800 107 715** (within Australia)

info@wildearth-travel.com | **wildearth-travel.com**



Wild Earth Travel

Small Ships, Big Adventures



wildearth-travel.com

info@wildearth-travel.com

SPECIAL OFFERS

Online prices reflect the current brochure fare savings of up to 30%. Prices may change based on demand. Terms and conditions apply. This special offer is subject to availability. Please contact us for more details.



Wild Earth Travel

Small Ships, Big Adventures

0800 945 3327 (within New Zealand) | +64 (0) 3 365 1355 | **1800 107 715** (within Australia)

info@wildearth-travel.com | **wildearth-travel.com**