

# Wild Earth Travel

*Small Ships, Big Adventures*

**wildearth-travel.com**

**info@wildearth-travel.com**

## MYTHICAL ISLANDS AND WILD LANDSCAPES OF THE HEBRIDES - SCOTLAND LUXURY CRUISE

PONANT invites you on a 8-day cruise aboard Le Boreal for an extraordinary journey featuring the archaeological sites and sumptuous scenery of northern Scotland, on the edge of the Highlands, in the heart of the dreamlike and mysterious Hebrides archipelago.

From Glasgow, the capital of Scotland boasting a convivial atmosphere and authentic charm, your ship will sail to the Hebrides archipelago. Located to the west of Scotland, it has around 150 islands and will reveal its diversity to you over various all-new ports of call. You will make a stop on Iona, the birthplace of Christianity in Scotland, home to an impressive abbey, and probably where the Book of Kells was produced.

Then, you will reach the volcanic territory of Lunga, in the Treshnish Isles. The small island is a protected area for seabirds and home to colonies of puffins and guillemots among others. Canna, a charming islet inhabited by twenty or so souls and nicknamed "the garden of the Hebrides", will unveil itself, with its Christian, Celtic, Nordic and Scottish vestiges, in a natural setting of great beauty, a sanctuary for rich marine birdlife.

You will continue to the Outer Hebrides and you will discover Callanish on the Isle of Lewis. This all-new port of call will take you back in time to between 2900 and 2600 BC, the period during which the island's megalithic site would have been created... Before the circle of standing stones, aligned with the cardinal points, the mystery remains entire, the emotion is palpable.

Your ship will then cruise towards Ullapool on the shore of Loch Broom in the western Highlands. This former herring fishing port boasts a picturesque atmosphere made up of white cottages and colourful fishermen's boats.

You will call at Portree, the largest town on the Isle of Skye, located on the edge of a loch that extends inland.

The last stage of your journey will take you to Tobermory, a charming fishing port with multicoloured houses and with a distillery that produces a renowned single malt, before you arrive in Glasgow, your disembarkation port.



ation port.

Wild Earth Travel

*Small Ships, Big Adventures*

**0800 945 3327** (within New Zealand) | +64 (0) 3 365 1355 | **1800 107 715** (within Australia)

info@wildearth-travel.com | **wildearth-travel.com**

# Wild Earth Travel

*Small Ships, Big Adventures*



**wildearth-travel.com**

**info@wildearth-travel.com**

## ITINERARY

### Day 1 GLASGOW, SCOTLAND

In the heart of the Clyde Valley, the bustling city of Glasgow contrasts starkly with the wild beauty of the surrounding countryside. Scotland's biggest city overflows with landmarks from its extensive artistic heritage and outstanding architectural tradition. The city's chequerboard layout makes walking through the major pedestrian thoroughfares easy: go with the flow and let the lively street atmosphere take you past the many Victorian monuments. Don't miss the collections on display in the numerous museums and art galleries. The Kelvingrove Art Gallery and Museum is an outstanding example.

### Day 2 IONA, HEBRIDES & LUNGA, TRESHNISH ISLES

Of all the islands in the Inner Hebrides, Iona is by far the most conducive to contemplation and meditation. And for good reason... it is here that St Columba landed from Ireland in 563 and undertook to establish Christianity in Scotland. Now an abbey, the island's true spiritual centre stands where the ancient monastery founded by the Irish missionary was built. Many kings of Scotland, including the legendary Macbeth, are buried in the nearby cemetery. In sunny weather, arriving on the Isle of Iona is a stunningly beautiful experience.

The Treshnish Isles lie off the Isle of Mull, to the west of Scotland, forming a small archipelago of seven islands of volcanic origin that belongs to the Inner Hebrides. Basalt cliffs and rocky coves shape the contours of the largest island, Lunga, while its inner lands are carpeted with moors. Inhabited until the 19th century, Lunga still bears the remains of traditional blackhouses, visible in situ. Designated a Special Protection Area, the island is now the kingdom of pelagic birds, including Atlantic puffins, and also home to a large seal colony. The craggy terrain and panoramic scenery of this island will delight bird-watchers and nature-lovers.

### Day 3 CANNA, HEBRIDES

The Hebrides archipelago has many natural treasures, including Canna, a preserved little island with the pretty nickname "the garden of the Hebrides". Inhabited since the Neolithic period, Canna has only around twenty inhabitants today but its territory has a rich history featuring Christians, Celtic monks, Norse settlers and Scottish communities, all of whom left traces of their passage, monuments, churches or Celtic crosses as heritage. You will take the time to enjoy beauty of the nature here, between the land and the ocean, from the diversity of the floral species to the captivating dance of the seabirds, including guillemots, come to nest in the island's protected spaces.

### Day 4 CALLANISH, OUTER HEBRIDES

In Scotland's Outer Hebrides, on the legendary Isle of Lewis, Callanish dazzles and surprises, fascinates and questions. On the eastern coast of the island, where land and sea rub shoulders and clash in the tumult of wild nature, discover the Callanish Stones megalithic site. No fewer than 51 stones stand in the middle of the peat fields. Deliberately arranged about 5,000 years ago, they are a mysterious testimony to the Stone Age. There are many theories as to the purpose of these stones -- a place of worship, a lunar calendar, an astronomic observatory or a healing centre -- but they remain an enigma. The singular atmosphere of this site lends itself to all sorts of interpretations, to all sorts of dreams and musings.

### Day 5 ULLAPOOL, SCOTLAND

On the West Coast of the Northern Highlands, you're sure to be charmed by the picturesque city of Ullapool, so often admired by holidaymakers passing through. While this delightful fishing port has proven to be the ideal departure point for exploring the region on foot, the place itself is worth the detour. Stretching along the quiet, majestic banks of loch Broom, whitewashed cottages line the harbour and the pretty pebble beach. The view of the surrounding mountains only makes this image postcard-perfect. To find out more about Ullapool's origins, you can visit the town's museum dedicated to local history.

Wild Earth Travel

*Small Ships, Big Adventures*

**0800 945 3327** (within New Zealand) | +64 (0) 3 365 1355 | **1800 107 715** (within Australia)

info@wildearth-travel.com | **wildearth-travel.com**



# Wild Earth Travel

*Small Ships, Big Adventures*

**wildearth-travel.com**

**info@wildearth-travel.com**

## Day 6 PORTREE, ISLE OF SKYE

Itineraries are subject to change.

Nestling in the crux of a gorgeous bay, Portree reflects the magnificence of the grandiose Isle of Skye as well as being its main town. Apart from the charm of its colourful houses, the town's outstanding location on the banks of a loch makes it a very pleasant place to be. From its colourful harbour bustling with local craftsmen's shops, you can take in a stunning view of the surrounding hills. Before trekking through the wilderness and drinking in the natural beauty of the Isle of Skye, check out some of the beautiful images in the Aros Centre.

## Day 7 TOBERMORY, ISLE OF MULL

Located at the northernmost tip of the lovely Isle of Mull, Tobermory has to be one of the most beautiful natural seaports on Scotland's West Coast. Founded in 1788, this ancient fishing village has been converted to a leisure port highly appreciated today for its surroundings and the quiet charm it exudes. You will definitely be won over by the row of many-storied houses on the hillside, illuminating the harbour with their vibrant colours. Although the real spectacle is outdoors, no less interesting are the Mull Museum dedicated the local history and the exhibitions at the An Tobar art gallery.

## Day 8 GLASGOW, SCOTLAND

In the heart of the Clyde Valley, the bustling city of Glasgow contrasts starkly with the wild beauty of the surrounding countryside. Scotland's biggest city overflows with landmarks from its extensive artistic heritage and outstanding architectural tradition. The city's chequerboard layout makes walking through the major pedestrian thoroughfares easy: go with the flow and let the lively street atmosphere take you past the many Victorian monuments. Don't miss the collections on display in the numerous museums and art galleries. The Kelvingrove Art Gallery and Museum is an outstanding example.

Please note:

Wild Earth Travel  
*Small Ships, Big Adventures*

**0800 945 3327** (within New Zealand) | +64 (0) 3 365 1355 | **1800 107 715** (within Australia)

info@wildearth-travel.com | **wildearth-travel.com**

# Wild Earth Travel

*Small Ships, Big Adventures*



**wildearth-travel.com**

**info@wildearth-travel.com**

## YOUR SHIP: LE LAPEROUSE

<b>YOUR SHIP:</b>	<b>Le Laperouse</b>
<b>VESSEL TYPE:</b>	<b>Luxury</b>
<b>LENGTH:</b>	<b>127 metres</b>
<b>PASSENGER CAPACITY:</b>	<b>92 cabins</b>
<b>BUILT/REFURBISHED:</b>	<b>2017/2018</b>

Featuring innovative and environmentally-friendly equipment, elegantly designed cabins, spacious suites with large windows, and lounge areas that open onto the outside, this new limited-capacity yacht boasting just 92 cabins and suites will offer you a truly unique cruising experience.

Aboard this ship that flies the French flag, you will experience the incomparable pleasure of an intimate cruise, with the possibility of exploring an ever-increasing range of destinations in an ethnic-chic ambiance with luxury service.

Experience a luxurious setting where the accent is on authenticity and passion for travel.

### RESTAURANTS

As it is an essential part of French culture, gastronomy will naturally have pride of place aboard this new ship. Through its two restaurants, Le Laperouse will invite you on a journey to elegance and epicureanism.

In a relaxed atmosphere, a first dining area located on Deck 3 and able to seat 70 will serve grilled meats daily, along with a variety of salads and desserts.

To the back of Deck 4, you will find a 260 m<sup>2</sup> panoramic restaurant which can accommodate all of our passengers in a

single sitting. Designed differently to that on our other ships, this dining area, which opens onto the outside, will have a buffet of salads, desserts and cheeses at your disposal. Our discreet and attentive crew will provide table service for hot meals.

### PUBLIC AREAS

Like Le Boreal and its sisterships, Le Laperouse has many common areas that are designed and equipped to meet all of your needs while preserving the intimacy of each passenger.

A 140 m<sup>2</sup> reception area includes: A reception/concierge desk, An excursions desk, The ship's administrative services, The sales office, manned by our Guest Relations Officer, Our 50 m<sup>2</sup> boutique which sells clothing, jewellery, beauty products, postcards and various accessories, Toilets accessible to passengers with reduced mobility.

A new hydraulic platform with adjustable height provides: Easier boarding than on any other cruise ship, Easier Zodiac embarkation and disembarkation for expeditions, Easier access to the sea for swimming and practising various water sports such as kayaking or paddle-boarding.

A pool deck offering: A pool with a panoramic view, equipped with a counter-current swimming system, A pleasant solarium, An outdoor bar and lounge with armchairs and sofas.

A 200 m<sup>2</sup> main lounge which can accommodate all of our passengers to share convivial moments and to host activities organised during the day or evening.

Lastly, a theatre that seats 188, equipped with: The latest sound and lighting technology, A LED wall as the stage backdrop, for the projection of high-resolution images and videos.

Wild Earth Travel

*Small Ships, Big Adventures*

**0800 945 3327** (within New Zealand) | +64 (0) 3 365 1355 | **1800 107 715** (within Australia)

info@wildearth-travel.com | **wildearth-travel.com**





# Wild Earth Travel

*Small Ships, Big Adventures*



**wildearth-travel.com**

**info@wildearth-travel.com**



and videos.



## Wild Earth Travel

*Small Ships, Big Adventures*

**0800 945 3327** (within New Zealand) | +64 (0) 3 365 1355 | **1800 107 715** (within Australia)

info@wildearth-travel.com | **wildearth-travel.com**

# Wild Earth Travel

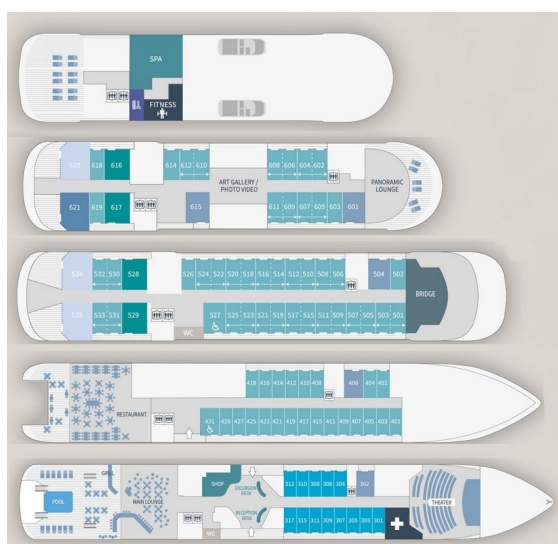
*Small Ships, Big Adventures*



[wildearth-travel.com](http://wildearth-travel.com)

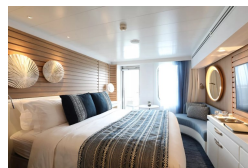
[info@wildearth-travel.com](mailto:info@wildearth-travel.com)

## INSIDE YOUR SHIP

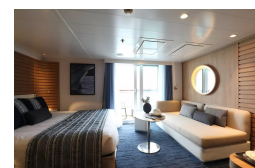


- Owner's Suite Deck 6
- Privilege Suites Deck 5-6
- Grand Deluxe Suites Deck 5-6
- Prestige Suites Deck 5-6
- Deluxe Suites Deck 5-6
- Prestige Cabins Deck 4-5-6
- Deluxe Cabins Deck 3

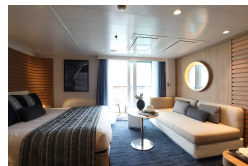
### Deluxe Stateroom



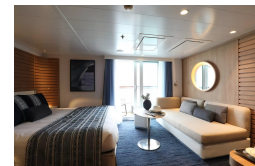
### Deluxe Suite Deck 3



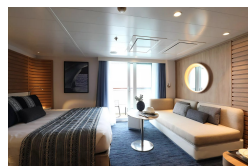
### Deluxe Suite Deck 4



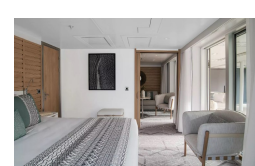
### Deluxe Suite Deck 5



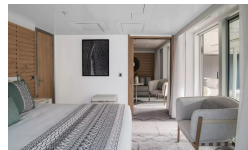
### Deluxe Suite Deck 6



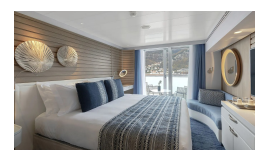
### Grand Deluxe Suite Deck 5



### Grand Deluxe Suite Deck 6



### Prestige Deck 4



Wild Earth Travel  
*Small Ships, Big Adventures*

0800 945 3327 (within New Zealand) | +64 (0) 3 365 1355 | 1800 107 715 (within Australia)

[info@wildearth-travel.com](mailto:info@wildearth-travel.com) | [wildearth-travel.com](http://wildearth-travel.com)



# Wild Earth Travel

*Small Ships, Big Adventures*

**wildearth-travel.com**

**info@wildearth-travel.com**

## PRICING

**21-May-2026 to 28-May-2026**

<b>Deluxe Stateroom</b>	<b>7670 AUD pp</b>
<b>Prestige Deck 4</b>	<b>8060 AUD pp</b>
<b>Prestige Deck 5</b>	<b>8300 AUD pp</b>
<b>Prestige Deck 6</b>	<b>8630 AUD pp</b>
<b>Deluxe Suite Deck 3</b>	<b>11570 AUD pp</b>
<b>Deluxe Suite Deck 5</b>	<b>11570 AUD pp</b>
<b>Deluxe Suite Deck 6</b>	<b>11570 AUD pp</b>
<b>Deluxe Suite Deck 4</b>	<b>11570 AUD pp</b>
<b>Prestige Deck 5 Suite</b>	<b>12440 AUD pp</b>
<b>Prestige Deck 6 Suite</b>	<b>12840 AUD pp</b>
<b>Privilege Suite Deck 5</b>	<b>13160 AUD pp</b>
<b>Privilege Suite Deck 6</b>	<b>13160 AUD pp</b>
<b>Grand Deluxe Suite Deck 6</b>	<b>13560 AUD pp</b>
<b>Grand Deluxe Suite Deck 5</b>	<b>13560 AUD pp</b>

### ADDITIONAL CHARGES:

**Port Taxes 520 AUD pp**

**Wild Earth Travel**

*Small Ships, Big Adventures*

**0800 945 3327** (within New Zealand) | +64 (0) 3 365 1355 | **1800 107 715** (within Australia)

info@wildearth-travel.com | **wildearth-travel.com**



# Wild Earth Travel

*Small Ships, Big Adventures*



**wildearth-travel.com**

**info@wildearth-travel.com**

## SPECIAL OFFERS

Online prices reflect the current brochure fare savings of up to 30%. Prices may change based on demand. Terms and conditions apply. This special offer is subject to availability. Please contact us for more details.



**Wild Earth Travel**

*Small Ships, Big Adventures*

**0800 945 3327** (within New Zealand) | +64 (0) 3 365 1355 | **1800 107 715** (within Australia)

info@wildearth-travel.com | **wildearth-travel.com**