



Wild Earth Travel

Small Ships, Big Adventures

wildearth-travel.com

info@wildearth-travel.com

MIND AND TASTE BUDS AWAKE WITH THE MUCEM IN THE MEDITERRANEAN - ITALY & GREECE CRUISE

In partnership with the MuCem and with the exceptional presence of Edouard de Laubrie and Emmanuel Perrodin.

Sail the waters of the Mediterranean and dive into centuries of history with the perspective of Edouard de Laubrie, who is in charge of research at the Museum of European and Mediterranean Civilisations (MuCEM) and is head of its Agriculture and Food department. All your senses will be stimulated by the culinary interventions of the Marseilles chef Emmanuel Perrodin. Drawing inspiration from the MuCem's "Le grand Meze" exhibition, the research manager and the chef will enhance your knowledge and awaken your taste buds with a focus on Mediterranean terroir and gastronomy. Conferences, culinary tastings and gala dinners will punctuate this cruise.

Come aboard Le Laperouse for a Mediterranean cruise between Italy and Greece, exploring two civilisations that have shaped the landscape. During an extraordinary nine-day odyssey, you will be immersed in the history and secrets of the Mediterranean shores.

Throughout your journey, you will benefit from an excursion included per person per port of call, to choose from a selection offered by PONANT. During this cruise, visit the National Museum of Magna Graecia in Reggio Calabria; explore the archaeological site of Delphi from Itea; or discover the ruins of Mycenae and Epidauros from Nafplio. The diversity of experiences on offer promises you intense and varied moments (to discover the full range of excursions, go to the itinerary tab).

Wild Earth Travel

Small Ships, Big Adventures

0800 945 3327 (within New Zealand) | +64 (0) 3 365 1355 | **1800 107 715** (within Australia)

info@wildearth-travel.com | **wildearth-travel.com**

Wild Earth Travel

Small Ships, Big Adventures

wildearth-travel.com

info@wildearth-travel.com

You will discover Agropoli, popular for the inlets and beaches around Trentova Bay. In the southernmost part of "the Boot", you sail off the coast of Calabria with a stopover in Reggio Calabria. You can stroll along the lungomare against the imposing backdrop of Mount Etna. In Catania, discover the many baroque monuments that helped the city earn its status as a UNESCO World Heritage Site.

Le Laperouse then crosses the Ionian Sea to Katakolon, its first stopover in Greece. From the port, you can get to Olympia, a UNESCO World Heritage site whose ruins bear witness to past grandeur.

You arrive in the small port of Itea from where it is possible to visit the mythical site of Delphi or even the Hosios Loukas monastery, both of which are UNESCO World Heritage Sites. After your mythical and remarkable crossing of the Corinth Canal, you will arrive in Nafplio. It is an opportunity to discover the mythical sites of Epidauros and Mycenae, respectively an ancient theatre and a pre-Hellenic city, both of which are UNESCO World Heritage Sites. Then you stop off at Hydra, a small island of old-worldly charm where motorised traffic is banned.

Athens, the mythical city dominated by the Acropolis and its monuments, which form the most extraordinary architectural and artistic ensemble bequeathed to the world by Ancient Greece, marks the end of this exceptional odyssey.



al odyssey.

ITINERARY

Day 1 CIVITAVECCHIA (ROME)

Built on an Etruscan site, between the Tyrrhenian sea and the Monti della Tolfa, Civitavecchia respires the dolce vita. This very modern and easy going town combines art and history with panache. You can also visit superb historical sites like Fort Michelangelo or the Cathedral of Saint Francis of Assisi. Just 80 kilometres from Rome, the town is a beautiful first step to the Italian capital.

Day 2 AGROPOLI

Wild Earth Travel

Small Ships, Big Adventures

0800 945 3327 (within New Zealand) | +64 (0) 3 365 1355 | **1800 107 715** (within Australia)

info@wildearth-travel.com | **wildearth-travel.com**



Wild Earth Travel

Small Ships, Big Adventures

wildearth-travel.com

info@wildearth-travel.com

Located on the Cilento Coast along the Tyrrhenian Sea, Agropoli is an Italian town located in the province of Salerno in Campania. You will be seduced by the beauty of its coastline, its pristine nature and its fascinating history dating back to Antiquity. The Apennines (from the Celtic word "pen" meaning rocky summit) form the backbone of the Italian Peninsula and serve as a majestic background to a landscape composed of small bays and coves. The magnificent beaches of Trentova Bay contribute to making this small town a very popular seaside resort.

Day 3 REGGIO DI CALABRIA

At the southern tip of the Italian boot, Reggio di Calabria guards the eastern shore of the Strait of Messina. From the lungomare, the sea front promenade, there are magnificent views over Sicily, a little over 3 km away, and Etna. Rebuilt after the 1908 earthquake, Reggio is set out in a grid pattern and has Art Nouveau and Belle Époque architecture that add to its charm. And the fragrance of bergamot, the citrus fruit that dominates the region's confectionery and perfumery. A visit to the National Archaeological Museum is a must. It is one of the most important in Italy and among its collections are the famous Riace Bronzes, the stunning Greek statues dating from the 5th century BC that were found off the coast in 1972.

Day 4 CATANIA, SICILY

Sicily's second city Catania is dominated by the majestic silhouette of Mount Etna. Nourishing and devastating at the same time, this giant crowned with smoke rings brought about the destruction of the city at the end of the 17th century. Catania was then rebuilt in the late Baroque style, and the many monuments of this epoch have earned its status as a UNESCO World Heritage Site. The baroque churches of the harmonious Via dei Crociferi perfectly illustrate the riches of this architectural heritage. During your stop, be sure to visit Saint Agatha Cathedral with its apses made of lava stones, and its square decorated with a fountain of the Elephant, the animal which allegedly has the power to calm the fury of Mount Etna ...

Day 5 KATAKOLON

This picturesque village stretches along the Ionian sea in the west of the Peloponnese. Its main harbour offers a vast panorama of the coastline's wooded hillsides. Dazzling white, the church of Saint-Nicolas houses a selection of sumptuous icons. You can also pay a visit the archaeological site of Olympus on the slopes of Mount Kronos.

Day 6 ITEA & CROSSING THE CORINTH CANAL

Tucked away in the Gulf of Corinth, this little port is situated in continental Greece, north-west of Athens. Take an easy stroll along the old cobblestone quays, while gazing at the summits encircling the Bay of Itea. We wouldn't be surprised if you are tempted by a visit to the Delphi Sanctuary. The sanctuary is located on a plateau on the slope of Mount Parnassus, just ten kilometres from Itea. A listed UNESCO World Heritage site, this is a once-in-a-lifetime experience whose ancient ruins are surrounded by steep mountains.

The Corinth Canal cuts through the Isthmus of Corinth, turning the Peloponnese into an island as it separates the region from the Greek mainland. Inaugurated in 1893, the canal is a little over six kilometres long and enables merchant vessels and passenger to avoid a long 400-km detour around the peninsula. The two sides of the canal reach a height of approximately fifty metres. From the exterior decks, don't miss this unique opportunity to watch the ship as it navigates along the narrow strip of water encased between tall, ochre cliffs. What an experience!

Day 7 NAFPLION

The engaging town of Nafplion is staggered up green hillsides of the Argolic Gulf, to the east of the Peloponnese. Do not be surprised by its extremely varied cultural heritage. Some of the must-see visits are the ancient agora on the plateau of Akronafplia, Italianate arcades in Syntagma square as well as the baroque fortress of Palamidi on a hillside of the same name. At the top of

Wild Earth Travel

Small Ships, Big Adventures

0800 945 3327 (within New Zealand) | +64 (0) 3 365 1355 | **1800 107 715** (within Australia)

info@wildearth-travel.com | **wildearth-travel.com**



Wild Earth Travel

Small Ships, Big Adventures

wildearth-travel.com

info@wildearth-travel.com

the hill, views of the gulf and the surrounding mountains are simply awesome. If you want to chill out by the water's edge, walk along the Arvanitia promenade to a beautiful creek in the shade of cedars and cypresses.

Day 8 HYDRA

This unusual gem belonging to the Saronic islands is located to the east of the Peloponnese. There are no cars here. Named after the island, the harbour town is layered up the slopes of a mountainous bay. You may be surprised to see beautiful stone mansions. These are traditional here, as are the multi-coloured caiques along the quays. Further along the shore, you will discover the Historical Archives Museum. Collections from Athens National History Museum are exhibited in the elegant villa Koundouriotis.

Day 9 ATHENS

The Greek capital city is located on the edge of the Saronic gulf, in the east of the country. It bears a plural name in reference to the first villages that surround the Acropolis. You will be enchanted by the rocky plateau presided by its monuments listed as UNESCO World Heritage. In the city below, you can visit some of the liveliest districts in Athens: Plaka, with its maze of colourful streets, and where, in the evenings the drifting aroma of moussaka and garlic prawns will tickle your taste buds. The National Archaeological museum and the Cycladic Art Museum are also some of the city's key attractions and allow visitors to discover Athens' cultural past.

Please note:

Itineraries are subject to change.

Wild Earth Travel

Small Ships, Big Adventures

0800 945 3327 (within New Zealand) | +64 (0) 3 365 1355 | **1800 107 715** (within Australia)

info@wildearth-travel.com | **wildearth-travel.com**



Wild Earth Travel

Small Ships, Big Adventures

wildearth-travel.com

info@wildearth-travel.com

YOUR SHIP: LE LAPEROUSE

YOUR SHIP:	Le Laperouse
VESSEL TYPE:	Luxury
LENGTH:	127 metres
PASSENGER CAPACITY:	92 cabins
BUILT/REFURBISHED:	2017/2018

Featuring innovative and environmentally-friendly equipment, elegantly designed cabins, spacious suites with large windows, and lounge areas that open onto the outside, this new limited-capacity yacht boasting just 92 cabins and suites will offer you a truly unique cruising experience.

Aboard this ship that flies the French flag, you will experience the incomparable pleasure of an intimate cruise, with the possibility of exploring an ever-increasing range of destinations in an ethnic-chic ambiance with luxury service.

Experience a luxurious setting where the accent is on authenticity and passion for travel.

RESTAURANTS

As it is an essential part of French culture, gastronomy will naturally have pride of place aboard this new ship. Through its two restaurants, Le Laperouse will invite you on a journey to elegance and epicureanism.

In a relaxed atmosphere, a first dining area located on Deck 3 and able to seat 70 will serve grilled meats daily, along with a variety of salads and desserts.

To the back of Deck 4, you will find a 260 m² panoramic restaurant which can accommodate all of our passengers in a

single sitting. Designed differently to that on our other ships, this dining area, which opens onto the outside, will have a buffet of salads, desserts and cheeses at your disposal. Our discreet and attentive crew will provide table service for hot meals.

PUBLIC AREAS

Like Le Boreal and its sisterships, Le Laperouse has many common areas that are designed and equipped to meet all of your needs while preserving the intimacy of each passenger.

A 140 m² reception area includes: A reception/concierge desk, An excursions desk, The ship's administrative services, The sales office, manned by our Guest Relations Officer, Our 50 m² boutique which sells clothing, jewellery, beauty products, postcards and various accessories, Toilets accessible to passengers with reduced mobility.

A new hydraulic platform with adjustable height provides: Easier boarding than on any other cruise ship, Easier Zodiac embarkation and disembarkation for expeditions, Easier access to the sea for swimming and practising various water sports such as kayaking or paddle-boarding.

A pool deck offering: A pool with a panoramic view, equipped with a counter-current swimming system, A pleasant solarium, An outdoor bar and lounge with armchairs and sofas.

A 200 m² main lounge which can accommodate all of our passengers to share convivial moments and to host activities organised during the day or evening.

Lastly, a theatre that seats 188, equipped with: The latest sound and lighting technology, A LED wall as the stage backdrop, for the projection of high-resolution images and videos.

Wild Earth Travel

Small Ships, Big Adventures

0800 945 3327 (within New Zealand) | +64 (0) 3 365 1355 | **1800 107 715** (within Australia)

info@wildearth-travel.com | **wildearth-travel.com**



Wild Earth Travel

Small Ships, Big Adventures

wildearth-travel.com

info@wildearth-travel.com



and videos.

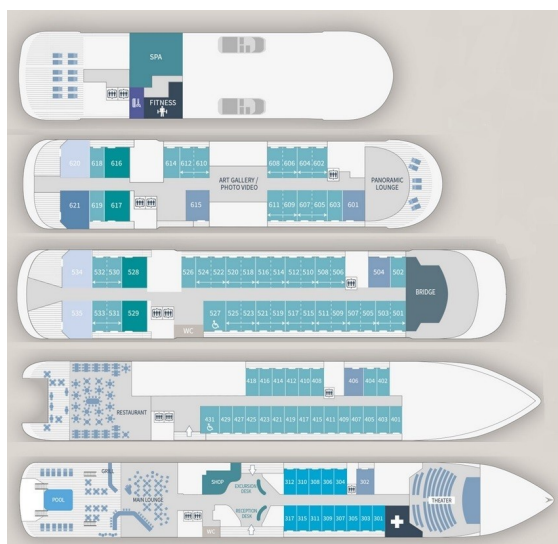
Wild Earth Travel

Small Ships, Big Adventures

0800 945 3327 (within New Zealand) | +64 (0) 3 365 1355 | **1800 107 715** (within Australia)

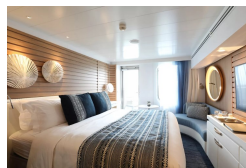
info@wildearth-travel.com | **wildearth-travel.com**

INSIDE YOUR SHIP

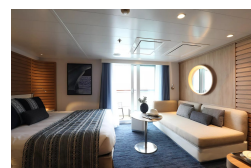


- Owner's Suite Deck 6
- Privilege Suites Deck 5-6
- Grand Deluxe Suites Deck 5-6
- Prestige Suites Deck 5-6
- Deluxe Suites Deck 5-6
- Prestige Cabins Deck 4-5-6
- Deluxe Cabins Deck 3

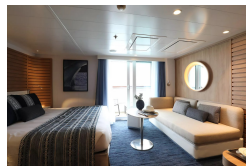
Deluxe Stateroom



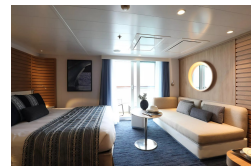
Deluxe Suite



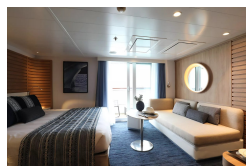
Deluxe Suite Deck 4



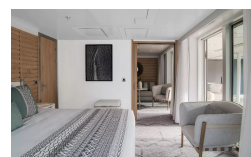
Deluxe Suite Deck 5



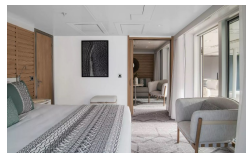
Deluxe Suite Deck 6



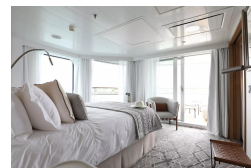
Grand Deluxe Suite



Grand Deluxe Suite Deck 6



Owner's Suite





Wild Earth Travel

Small Ships, Big Adventures

wildearth-travel.com

info@wildearth-travel.com

PRICING

09-Oct-2025 to 17-Oct-2025

Deluxe Stateroom	9340 AUD pp
Prestige Stateroom Deck 4	9830 AUD pp
Prestige Stateroom Deck 5	10320 AUD pp
Prestige Stateroom Deck 6	10910 AUD pp
Deluxe Suite	17690 AUD pp
Deluxe Suite Deck 4	17690 AUD pp
Deluxe Suite Deck 5	17690 AUD pp
Deluxe Suite Deck 6	17690 AUD pp
Prestige Suite Deck 5	19670 AUD pp
Prestige Suite Deck 6	20150 AUD pp
Privilege Suite	21130 AUD pp
Privilege Suite Deck 6	21130 AUD pp
Grand Deluxe Suite Deck 6	25550 AUD pp
Grand Deluxe Suite	25550 AUD pp
Owner's Suite	27740 AUD pp

ADDITIONAL CHARGES:

Port Taxes 590 AUD pp



Wild Earth Travel
Small Ships, Big Adventures

0800 945 3327 (within New Zealand) | +64 (0) 3 365 1355 | **1800 107 715** (within Australia)

info@wildearth-travel.com | **wildearth-travel.com**



Wild Earth Travel

Small Ships, Big Adventures

wildearth-travel.com

info@wildearth-travel.com

SPECIAL OFFERS

Online prices reflect the current brochure fare savings of up to 30%. Prices may change based on demand. Terms and conditions apply. This special offer is subject to availability. Please contact us for more details.

Wild Earth Travel

Small Ships, Big Adventures

0800 945 3327 (within New Zealand) | +64 (0) 3 365 1355 | **1800 107 715** (within Australia)

info@wildearth-travel.com | **wildearth-travel.com**