

Wild Earth Travel

Small Ships, Big Adventures

wildearth-travel.com

info@wildearth-travel.com

AQUA MEKONG EXPEDITION CRUISE - HO CHI MINH CITY TO SIEM REAP

Embark on a cultural odyssey of a lifetime on a luxury Mekong river cruise. This classic Mekong river cruise itinerary places you in the footsteps of the legendary King Jayavarman VII, who sailed the Mekong in the late 12th century to build the grand Khmer empire. Aboard the luxury Aqua Mekong, the whole narrative of the region's mysteries and wonders unravel before your eyes. Follow our expert English-speaking guides and discover magnificent carved temples, lush landscapes and rural villages where culture and craft flourishes -- leaving no stone unturned.



ITINERARY

Day 1 VIETNAM My Tho - Ho Chi Minh

Our crew warmly welcomes you at our meeting point at Ho Chi Minh City where our air-conditioned coach will transfer you to the Aqua Mekong at My Tho harbor. Settle into your floating luxury retreat and memorable first night on board your five-star home on the legendary Mekong.

Day 2 VIETNAM Binh Thanh/Sa Dec - My An Hung

Begin the day learning about traditional mat weaving at Binh Thanh village or visit Sa Dec's vibrant market and the famous house of Marguerite Duras' legendary lover, Mr. Huynh Thuy Le. In the afternoon, stroll through the verdant plantations in the Mekong Delta village of My An Hung, visiting a local's home to savor local fruits, listen to traditional folk song performances by villagers, and participate in a unique unicorn dance. A 10.5-mile (17km) biking option is also available for those who wish to explore the idyllic countryside on

Wild Earth Travel

Small Ships, Big Adventures

0800 945 3327 (within New Zealand) | +64 (0) 3 365 1355 | 1800 107 715 (within Australia)

info@wildearth-travel.com | wildearth-travel.com



Wild Earth Travel

Small Ships, Big Adventures

wildearth-travel.com

info@wildearth-travel.com

wheels.

Day 3 VIETNAM Chau Doc - Vinh Xuong - Ka'om Samnor Border

As the sun rises, travel by skiff along Bassac Canal to the Chau Doc floating market for a real eye-opener, then hop on our van to Long Son Pagoda atop Sam Mountain to meet Buddhist monks who've made this sacred hilltop their home. Take a picturesque 11 mile (18km) bike ride on Long Khanh Island or hop on a rickshaw to visit Tan Chau Market with our chef. After lunch, relax by the pool, try traditional Khmer massage or learn to cook Mekong inspired dishes while we cross the Cambodia-Vietnam border.

Day 4 CAMBODIA Koh Oknha Tey - Preah Prosop

See the best of the Cambodian capital on a motorized tuk-tuk, including the Royal Palace, Silver Pagoda and the National Museum of Cambodia, home to the world's largest collection of Khmer art. Based on your preferences, visit the Tuol Sleng Genocide Museum or shop at the Russian Market before disembarking the Aqua Mekong.

Day 5 CAMBODIA Phnom Penh

See the best of the Cambodian capital on a motorized tuk-tuk, including the Royal Palace, Silver Pagoda and the National Museum of Cambodia, home to the world's largest collection of Khmer art. Based on your preferences, visit the Tuol Sleng Genocide Museum or shop at the Russian Market before disembarking the Aqua Mekong. Note: All itineraries are subject to change, due to weather and other conditions.

Day 6 CAMBODIA Tonle Sap River - Koh Chen - Kampong Chhnang

Awake to the beauty of rural Cambodia and sail by skiff to the silversmith village of Koh Chen for a first-hand encounter with artisans producing magnificent royal Khmer silverware. Keep an eye out for their famous silver bowls, regularly chosen by Cambodia's king as gifts for visiting dignitaries. In the afternoon, continue experiencing Khmer riverside life in Kampong Chhnang. In this serene village, meet traditional potters and palm-sugar

producers and watch them practices age-old craftsmanship and techniques dating back to the 6th century that is still highly relevant and valuable today.

Day 7 CAMBODIA Tonle Sap Lake - Chhnok Tru - Moat Khla

Discover vast wetlands, birdlife and remote stilt communities around the Tonle Sap Lake, a UNESCO Biosphere Reserve designated in 1997. In Chhnok Tru, visit an intriguing ice factory and learn from locals what it is like to live in a town where its school, church, pagoda, police station and even the karaoke bar 'float' on water. After lunch, sail to the floating village of Moat Khla and attend a Buddhist blessing ceremony in this isolated community accessible only by water.

Day 8 CAMBODIA Tonle Sap Lake - Prek Toal - Siem Reap

Continue the exploration of Southeast Asia's largest freshwater lake, setting off on Aqua Mekong's ergonomic skiffs to the 22,000-hectare Prek Toal Core Bird Reserve, one of the last refuges in Southeast Asia for large waterbirds like the spot-billed pelicans, milky stork, black-headed ibis and the elusive masked finfoot. Disembark in the enigmatic city of Siem Reap, home of the Angkor Wat.

Please Note:

All itineraries are subject to change, due to weather and other conditions.

Wild Earth Travel

Small Ships, Big Adventures

0800 945 3327 (within New Zealand) | +64 (0) 3 365 1355 | **1800 107 715** (within Australia)

info@wildearth-travel.com | wildearth-travel.com

Wild Earth Travel

Small Ships, Big Adventures

wildearth-travel.com

info@wildearth-travel.com

YOUR SHIP: AQUA MEKONG

YOUR SHIP:	Aqua Mekong
VESSEL TYPE:	Luxury River Expedition
LENGTH:	62.4 meters / 204 feet
PASSENGER CAPACITY:	40
BUILT/REFURBISHED:	2014

Spacious and indulgent, yet intimate enough to feel entirely exclusive, the Aqua Mekong incorporates relaxed yet refined lounging and dining areas and can accommodate a maximum of 40 guests plus crew. Modern navigation technologies and the highest cruise ship standards as well as our experienced river pilot and crew ensure smooth travel and safety on the water.

The Aqua Mekong has 20 air conditioned Design Suites, each one a generous 30 square meters (320 square feet), eight with balconies and all created entirely of local materials with the relaxed sophistication and contemporary comforts of a five star resort. Floor to ceiling panoramic windows allow guests to gaze upon the Mekong from the pillow top California king size bed that can be converted upon request into two full twin beds. More captivating views await on the plush, roomy daybed placed by the window wall or for our eight balcony accommodations, outside along with a romantic table for two. Those who wish to keep up on the world beyond these enthralling riverbanks will appreciate the flat screen television and complementary high speed wireless internet.

Sunlit indoors and out, the top level Observation Deck aboard the Aqua Mekong has been designed to seamlessly connect

guests with the constantly shifting landscape of floating Vietnamese villages, French colonial church spires and gilded Buddhist stupas along this mighty river, always in the utmost comfort. Whether one chooses to relax in the air conditioned Indoor Lounge, go horizontal under the sun outside at the ship's Outdoor Lounge area or cool off with a plunge in the shimmering pool at the bow side, the Observation Deck ensures that the river always remains in full view.

Guests gravitate to the Indoor Lounge in the mornings for ca phe a, Vietnamese coffee poured over ice with sweet condensed milk, between excursions to swap travelers tales and for daily lectures from the expert local guides.



cal guides.

Wild Earth Travel

Small Ships, Big Adventures

0800 945 3327 (within New Zealand) | +64 (0) 3 365 1355 | **1800 107 715** (within Australia)

info@wildearth-travel.com | wildearth-travel.com

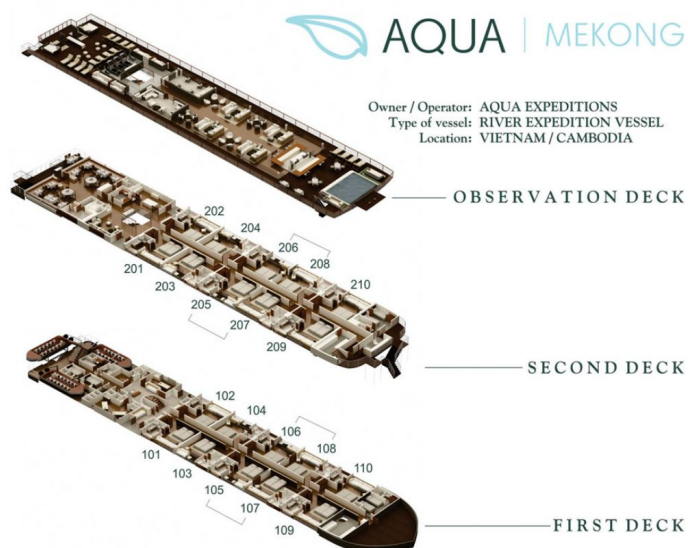
Wild Earth Travel

Small Ships, Big Adventures

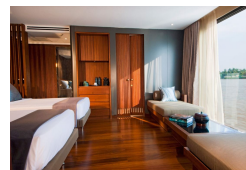
wildearth-travel.com

info@wildearth-travel.com

INSIDE YOUR SHIP



Design Suite



Wild Earth Travel

Small Ships, Big Adventures

0800 945 3327 (within New Zealand) | +64 (0) 3 365 1355 | 1800 107 715 (within Australia)

info@wildearth-travel.com | wildearth-travel.com

Wild Earth Travel

Small Ships, Big Adventures

wildearth-travel.com

info@wildearth-travel.com

PRICING

19-Sep-2025 to 26-Sep-2025

Design Suite	10290 USD pp
--------------	--------------

26-Sep-2025 to 03-Oct-2025

Design Suite	10290 USD pp
--------------	--------------

03-Oct-2025 to 10-Oct-2025

Design Suite	10290 USD pp
--------------	--------------

17-Oct-2025 to 24-Oct-2025

Design Suite	10290 USD pp
--------------	--------------

24-Oct-2025 to 31-Oct-2025

Design Suite	10290 USD pp
--------------	--------------

31-Oct-2025 to 07-Nov-2025

Design Suite	10290 USD pp
--------------	--------------

07-Nov-2025 to 14-Nov-2025

Design Suite	10290 USD pp
--------------	--------------

14-Nov-2025 to 21-Nov-2025

Design Suite	10290 USD pp
--------------	--------------

21-Nov-2025 to 28-Nov-2025

Design Suite	10290 USD pp
--------------	--------------

18-Sep-2026 to 25-Sep-2026

Design Suite	10570 USD pp
--------------	--------------

25-Sep-2026 to 02-Oct-2026

Design Suite	10570 USD pp
--------------	--------------

02-Oct-2026 to 09-Oct-2026

Design Suite	10570 USD pp
--------------	--------------

09-Oct-2026 to 16-Oct-2026

Design Suite	10570 USD pp
--------------	--------------

16-Oct-2026 to 23-Oct-2026

Design Suite	10570 USD pp
--------------	--------------

23-Oct-2026 to 30-Oct-2026

Design Suite	10570 USD pp
--------------	--------------

30-Oct-2026 to 06-Nov-2026

Design Suite	10570 USD pp
--------------	--------------

13-Nov-2026 to 20-Nov-2026

Design Suite	10570 USD pp
--------------	--------------

20-Nov-2026 to 27-Nov-2026

Design Suite	10570 USD pp
--------------	--------------

03-Sep-2027 to 10-Sep-2027

Design Suite	10920 USD pp
--------------	--------------

10-Sep-2027 to 17-Sep-2027

Design Suite	10920 USD pp
--------------	--------------

17-Sep-2027 to 24-Sep-2027

Design Suite	10920 USD pp
--------------	--------------

24-Sep-2027 to 01-Oct-2027

Design Suite	10920 USD pp
--------------	--------------

Wild Earth Travel

Small Ships, Big Adventures

wildearth-travel.com

info@wildearth-travel.com

01-Oct-2027 to 08-Oct-2027

Design Suite	10920 USD pp
--------------	--------------

08-Oct-2027 to 15-Oct-2027

Design Suite	10920 USD pp
--------------	--------------

15-Oct-2027 to 22-Oct-2027

Design Suite	10920 USD pp
--------------	--------------

22-Oct-2027 to 29-Oct-2027

Design Suite	10920 USD pp
--------------	--------------

29-Oct-2027 to 05-Nov-2027

Design Suite	10920 USD pp
--------------	--------------

05-Nov-2027 to 12-Nov-2027

Design Suite	10920 USD pp
--------------	--------------

12-Nov-2027 to 19-Nov-2027

Design Suite	10920 USD pp
--------------	--------------

19-Nov-2027 to 26-Nov-2027

Design Suite	10920 USD pp
--------------	--------------