



Wild Earth Travel

Small Ships, Big Adventures

wildearth-travel.com

info@wildearth-travel.com

MEDITERRANEAN SPRINGTIME IN FRANCE AND ITALY - LUXURY CRUISE FROM NICE

Between France and Italy, set off aboard Le Bougainville for an unforgettable 12-day cruise discovering Elba, the Stromboli, the Aeolian Islands, Sicily, Sardinia and Corsica, as well as the coastal towns of Nice, Livorno, Amalfi and Marseille.

Throughout your journey, you will benefit from an excursion included per person per port of call, to choose from a selection offered by PONANT. During this cruise, visit the Pompeii archaeological site from Amalfi, attend a concert of Sardinian polyphonic songs in Cagliari, or explore the pretty villages of Gordes, Les Baux-de-Provence and Saint-Remy-de-Provence leaving from Marseille. The diversity of experiences on offer promises you intense and varied moments (to discover the full range of excursions, go to the itinerary tab).

From Nice, you will sail towards Tuscan shores to Livorno, a port town famous for its Renaissance-era fortifications. The Little Venice district, as it is known, offers a picturesque setting in which to enjoy fish and seafood.

Portoferraio, a small corner of paradise on the island of Elba, where Napoleon spent many days in exile will be your next port of call. You will sail towards the sublime sites of Amalfi and its coast, a UNESCO World Heritage Site. Suspended between the sky and the sea, this small medieval city offers sumptuous scenery.

A little further south, you discover the Aeolian islands. Lipari is the capital of the Aeolian volcanic archipelago and is renowned

for its many natural and architectural gems. Then, you sail in front of Stromboli, an active volcano whose crater regularly erupts with lava flows.

A cultural jewel of Sicily, Palermo is a splendid witness to three thousand years of history where you will be able to visit emblematic landmarks such as the 12th-century cathedral and Teatro Massimo, one of the largest theatres in Europe. In Trapani, discover rich and varied cultural and culinary heritage.

Le Bougainville then arrives in Cagliari, capital of Sardinia and one of the largest natural harbours in the Mediterranean; its historic centre is full of charm, with shaded stairs, small squares inundated with light and remains conjuring up its medieval grandeur.

Your ship will set sail towards the southern tip of Corsica, to Bonifacio. A veritable fortress sculpted by the wind and the spray, the "sentinel city" will reveal its historical centre and its long cobbled streets. You will head further north to Calvi, in the heart of the Balagne region. Between steep peaks and sublime beaches with turquoise waters, you will experience a wild and authentic Corsica.

Finally, you will reach Marseille, the oldest port city in France, which is constantly renewing itself beneath the protective gaze of the Basilica of Our Lady of the Guard. Your cruise will end in Nice, famous for its never-ending riviera.

Wild Earth Travel

Small Ships, Big Adventures

0800 945 3327 (within New Zealand) | +64 (0) 3 365 1355 | **1800 107 715** (within Australia)

info@wildearth-travel.com | **wildearth-travel.com**

Wild Earth Travel

Small Ships, Big Adventures

wildearth-travel.com

info@wildearth-travel.com



On the Ligurian coast, Livorno invites us to Tuscany, a charming region offering archaeological vestiges, Renaissance treasures, undulating landscapes and a pleasant way of life. When the Medicis arrived in the 16th century they developed the city, which became one of the most important ports in the Mediterranean. Cosmopolitan and multireligious, Livorno has welcomed many immigrants and is a wonderful example of cultural diversity. Built during that period, Fortezza Vecchia and Fortezza Nuova attest to the city's power. At the foot of the new fort, Nuova Venezia is an enchanting district with small canals and streets to stroll along to discover a few architectural treasures, such as the magnificent Santa Caterina da Siena church in the Tuscan baroque style.

Day 3 PORTOFERRAIO, ELBA

In the elbow of a creek on the northern coastline of Elba Island, a small corner of paradise awaits in the form of Portoferraio. As you approach its coastlines, you will make out the powerful and majestic contours of its Medici fortresses. Napoleon Bonaparte spent many of his 300 days in exile here. The Palazzina dei Mulini, his first imperial residence, whose gardens offer outstanding views of the sea, is a must-see. Historical treasures are followed by another kind of treasure, namely white sand beaches, and equally tempting local specialities including gurguglione and rice with cuttlefish ink.

Day 4 AMALFI

The little town of Campania gives its name to the region containing the magnificent, UNESCO World Heritage listed, Amalfi coast. And for good reason. Located at the foot of Mount Cerreto, against a rock face of a gorge that opens onto the sea, Amalfi's absolutely splendid natural scenery alone is enough to feast your eyes on before making for the medieval streets to explore some of its history. The mix of cultural influences from the Mediterranean Rim is omnipresent here.

Day 5 SAILING IN FRONT OF STROMBOLI & LIPARI, AEOLIAN ISLANDS

ng riviera.

ITINERARY

Day 1 NICE

Capital of the Cote d'Azur, Nice is surrounded by an amphitheatre of hills and mountains that protects it from the wind. You will probably want to explore the Promenade des Anglais, where you can sit on one of the famous blue chairs laid out opposite the baie des Anges. The Chateau hill is also a very pleasant place to walk. This is the entrance to the old city, with its bustling markets and regional products along the main street, the Cours Saleya.

Day 2 LIVORNO

Wild Earth Travel

Small Ships, Big Adventures

0800 945 3327 (within New Zealand) | +64 (0) 3 365 1355 | 1800 107 715 (within Australia)

info@wildearth-travel.com | wildearth-travel.com



Wild Earth Travel

Small Ships, Big Adventures

wildearth-travel.com

info@wildearth-travel.com

Like Ulysses during his Odyssey, you will have the opportunity to admire the Stromboli, the capricious volcano that looms over the Aeolian Islands. Its activity, uninterrupted for thousands of years, has earned it the nickname the "Lighthouse of the Mediterranean".

Of the seven Aeolian islands, this is the largest and the most populated. Lying off the north coast of Sicily, in the Tyrrhenian sea, Lipari is one of UNESCO's marvellous World Heritage sites. Its lava stone quarries and obsidian flow of Rocce Rosse are indications of its volcanic nature. The town, the largest urban area in the whole archipelago, proudly houses its citadel and its castle, both rooted in Antiquity. If you head further into the centre, you'll be surprised to come across a Norman cathedral, complete with a magnificent baroque façade.

Day 6 PALERMO, SICILY

Palermo is the guardian of the Sicilian soul. Many have been attracted to this city, the largest capital of the Italian islands. Phoenicians, Carthaginians, Romans, Byzantines, Arabs, Normans... Palermo is a rich culmination of so many cultural influences as seen in the Moorish designs on the cathedral, and the Byzantine mosaics of the Palatine chapel, which is itself housed within the precincts of the Norman palace. You will fall under the spell of the palaces, baroque splendours that grace the town with their obsolete beauty. It is thrilling to stumble upon one of those fabulous markets, high in colour, and headily picturesque.

Day 7 TRAPANI, SICILY

Bathed in the cobalt waters of the Tyrrhenian sea, Trapani is the former port of the Greek city of Erice, boasting a privileged natural position in western Sicily. As you wander through its little streets, you will discover a secular cultural heritage, bearing witness to the many influences of civilisations that came here: San Lorenzo Cathedral, Maria Santissima Annunziata sanctuary, the

fountain of Triton. On the shaded restaurant terraces, savour some fresh fish from the morning's catch. Or else you can opt for a seafood couscous, a culinary legacy from their Arab neighbours.

Day 8 CAGLIARI, SARDINIA

The capital of Sardinia, Cagliari, like Rome, is built on seven hills. Its Sardinian name means "castle", in reference to the citadel, its historic centre, which dominates the city. The old ramparts are now pleasant panoramic terraces bordering picturesque streets. The city hosted the Nuragic, Phoenician, Roman and Byzantine civilisations before the rein of the Spanish Hapsburgs and the House of Savoy. The monuments of Cagliari bear the traces of these successive dominations, such as the Bastion of Saint-Remy or the Sainte-Marie Cathedral. On the sea front, Art Nouveau-style public monuments give way to the Poetto beach, a magnificent stretch of sand that is 8 kilometres long.

Day 9 BONIFACIO, CORSICA

The spectacular town of Bonifacio located on the very tip of southern Corsica, clings to a narrow promontory of white rock overhanging the turquoise waters of the Mediterranean. You can admire its limestone cliffs hewn out by the wind, before setting off on a cultural tour of its cultural treasures. From the little paved streets in the ancient Haute Ville, to the promenade on the open-air medieval chemin de ronde, this stunning town will take you on a journey back in time. Frequented or secluded, there are numerous beaches to choose from, all in keeping with the high standards of the "île de Beauté".

Day 10 CALVI, CORSICA

Nestled on a rocky spur in the north-west of Corsica, the port of Calvi offers its whiteness between two sapphire-coloured bays. Capital of the Balagne region, the Genoese city benefits from an exceptional natural setting between the abrupt relief of the central chain, fertile hills and long sandy beaches. From the

Wild Earth Travel

Small Ships, Big Adventures

0800 945 3327 (within New Zealand) | +64 (0) 3 365 1355 | **1800 107 715** (within Australia)

info@wildearth-travel.com | **wildearth-travel.com**



Wild Earth Travel

Small Ships, Big Adventures

wildearth-travel.com

info@wildearth-travel.com

promontory of the Notre-Dame-de-la-Serra chapel, built in the 19th century on the ruins of a 15th century sanctuary, you will not miss the sublime panorama of the seaside, the mountains and the Calvi citadel. A little further west, you will have the opportunity to discover with the peninsula of Revelatta, a wilder and more preserved part of Corsica.

Day 11 MARSEILLE

The oldest harbour in France, Marseille is the city where PONANT has chosen to set up its company headquarters. Heart vibrating in its setting of Mediterranean Calanques, it reveals its raw and authentic beauty, made up of a thousand influences and cultures which, over the centuries, have made up its wealth. A stroll through the Old Port will allow you to discover the places corresponding to the city founded by the Greeks as well as Notre-Dame-de-la-Garde Basilica, with its astonishing neo-Byzantine architecture, which overlooks it. Close to the quays, the Place de Lenche, which covers the ancient agora, will be perfect for a break in one of its lively cafes before melting into the maze of narrow streets with colourful houses in the Panier district, just a stone's throw away.

Day 12 NICE

Capital of the Cote d'Azur, Nice is surrounded by an amphitheatre of hills and mountains that protects it from the wind. You will probably want to explore the Promenade des Anglais, where you can sit on one of the famous blue chairs laid out opposite the baie des Anges. The Chateau hill is also a very pleasant place to walk. This is the entrance to the old city, with its bustling markets and regional products along the main street, the Cours Saleya.

Please Note:

Itineraries are subject to change.

Wild Earth Travel

Small Ships, Big Adventures

0800 945 3327 (within New Zealand) | +64 (0) 3 365 1355 | **1800 107 715** (within Australia)

info@wildearth-travel.com | **wildearth-travel.com**



Wild Earth Travel

Small Ships, Big Adventures

wildearth-travel.com

info@wildearth-travel.com

YOUR SHIP: LE BOUGAINVILLE

YOUR SHIP: Le Bougainville

VESSEL TYPE: Luxury

LENGTH:

PASSENGER CAPACITY: 92 cabins

BUILT/REFURBISHED: 2017/2018

Featuring innovative and environmentally-friendly equipment, elegantly designed cabins, spacious suites with large windows, and lounge areas that open onto the outside, this new limited-capacity yacht boasting just 92 cabins and suites will offer you a truly unique cruising experience.

As the first ship in a new series that remains true to the Ponant spirit, Le Bougainville will embody the unique atmosphere that is the cruise line's hallmark: a subtle blend of refinement, intimacy and comfort.

Aboard this ship that flies the French flag, you will experience the incomparable pleasure of an intimate cruise, with the possibility of exploring an ever-increasing range of destinations in an ethnic-chic ambiance with luxury service.

Experience a luxurious setting where the accent is on authenticity and passion for travel.

RESTAURANTS

As it is an essential part of French culture, gastronomy will naturally have pride of place aboard this new ship. Through its two restaurants, Le Bougainville will invite you on a journey to elegance and epicureanism.

In a relaxed atmosphere, a first dining area located on Deck 3

and able to seat 70 will serve grilled meats daily, along with a variety of salads and desserts.

To the back of Deck 4, you will find a 260 m² panoramic restaurant which can accommodate all of our passengers in a single sitting. Designed differently to that on our other ships, this dining area, which opens onto the outside, will have a buffet of salads, desserts and cheeses at your disposal. Our discreet and attentive crew will provide table service for hot meals.

PUBLIC AREAS

Like Le Boreal and its sisterships, Le Bougainville has many common areas that are designed and equipped to meet all of your needs while preserving the intimacy of each passenger.

A 140 m² reception area includes:

A reception/concierge desk, An excursions desk, The ship's administrative services, The sales office, manned by our Guest Relations Officer, Our 50 m² boutique which sells clothing, jewellery, beauty products, postcards and various accessories, Toilets accessible to passengers with reduced mobility.

A new hydraulic platform with adjustable height provides: Easier boarding than on any other cruise ship, Easier Zodiac embarkation and disembarkation for expeditions, Easier access to the sea for swimming and practising various water sports such as kayaking or paddle-boarding.

A pool deck offering: A pool with a panoramic view, equipped with a counter-current swimming system, A pleasant solarium, An outdoor bar and lounge with armchairs and sofas.

A 200 m² main lounge which can accommodate all of our passengers to share convivial moments and to host activities organised during the day or evening.

Wild Earth Travel

Small Ships, Big Adventures

0800 945 3327 (within New Zealand) | +64 (0) 3 365 1355 | **1800 107 715** (within Australia)

info@wildearth-travel.com | wildearth-travel.com

Wild Earth Travel

Small Ships, Big Adventures

wildearth-travel.com

info@wildearth-travel.com

Lastly, a theatre that seats 188, equipped with: The latest sound and lighting technology, A LED wall as the stage backdrop, for the projection of high-resolution images and videos.



and videos.

Wild Earth Travel

Small Ships, Big Adventures

0800 945 3327 (within New Zealand) | +64 (0) 3 365 1355 | **1800 107 715** (within Australia)

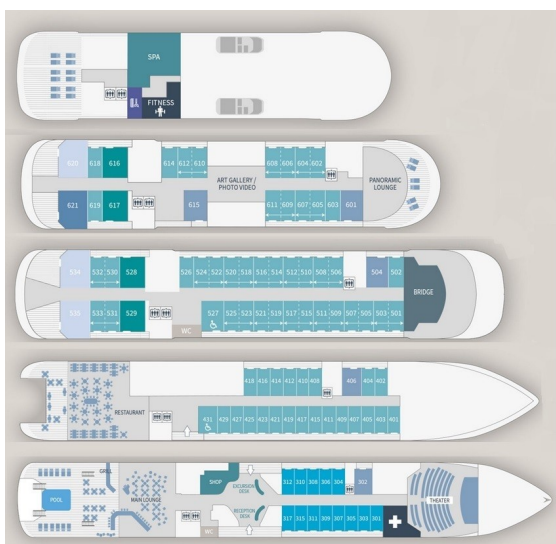
info@wildearth-travel.com | **wildearth-travel.com**



wildearth-travel.com

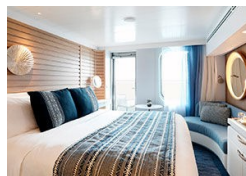
info@wildearth-travel.com

INSIDE YOUR SHIP

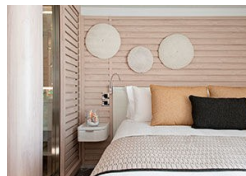


- Owner's Suite Deck 6
- Privilege Suites Deck 5-6
- Grand Deluxe Suites Deck 5-6
- Prestige Suites Deck 5-6
- Deluxe Suites Deck 5-6
- Prestige Cabins Deck 4-5-6
- Deluxe Cabins Deck 3

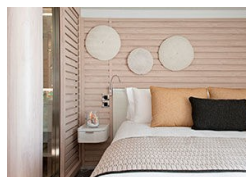
Deluxe Stateroom



Deluxe Suite Deck 4



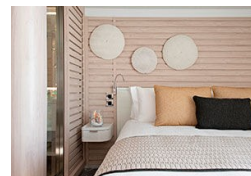
Deluxe Suite Deck 6



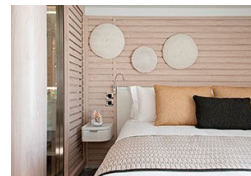
Grand Deluxe Suite Deck 6



Deluxe Suite



Deluxe Suite Deck 5



Grand Deluxe Suite



Owner's Suite





Wild Earth Travel

Small Ships, Big Adventures

wildearth-travel.com

info@wildearth-travel.com

PRICING

10-May-2025 to 21-May-2025

Deluxe Stateroom	14190 AUD pp
Prestige Stateroom Deck 4	14940 AUD pp
Prestige Stateroom Deck 5	15690 AUD pp
Prestige Stateroom Deck 6	16590 AUD pp
Deluxe Suite Deck 5	26950 AUD pp
Deluxe Suite Deck 4	26950 AUD pp
Deluxe Suite	26950 AUD pp
Deluxe Suite Deck 6	26950 AUD pp
Prestige Suite Deck 5	29950 AUD pp
Prestige Suite Deck 6	30700 AUD pp
Privilege Suite Deck 6	32200 AUD pp
Privilege Suite	32200 AUD pp
Grand Deluxe Suite	38950 AUD pp
Grand Deluxe Suite Deck 6	38950 AUD pp
Owner's Suite	38950 AUD pp

ADDITIONAL CHARGES:

Port Taxes 810 AUD pp



Wild Earth Travel
Small Ships, Big Adventures

0800 945 3327 (within New Zealand) | +64 (0) 3 365 1355 | **1800 107 715** (within Australia)

info@wildearth-travel.com | **wildearth-travel.com**



Wild Earth Travel

Small Ships, Big Adventures

wildearth-travel.com

info@wildearth-travel.com

SPECIAL OFFERS

Up to 30% OFF! Prices online do not show the discounted rates. Terms and Conditions apply, special offer is subject to availability, please contact us for more details.

Wild Earth Travel

Small Ships, Big Adventures

0800 945 3327 (within New Zealand) | +64 (0) 3 365 1355 | **1800 107 715** (within Australia)

info@wildearth-travel.com | **wildearth-travel.com**