

# Wild Earth Travel

*Small Ships, Big Adventures*

**wildearth-travel.com**

**info@wildearth-travel.com**

## LITTLE-KNOWN SCANDINAVIA LUXURY CRUISE

Explore radiant and preserved Scandinavia, from the lively canals of Copenhagen to the vertiginous fjords of Norway. In the waters of the famous Kattegat, then the Skagerrak, small seaside towns of indefinable charm punctuate your journey. Further north, the Hardangerfjord and the Lysefjord stretch out like mineral cathedrals. In these peaceful fjords, the monumental walls and colourful hamlets seem suspended in silence while, on land, the Nordic heritage unfurls its many riches. Historic ports, hundred-year-old churches and pretty little streets will take you back into the region's fascinating past, visiting the likes of Stavanger or the Hanseatic city of Bergen.



### ITINERARY

#### Day 1 - Copenhagen

Connected to the far eastern side of Sealand island, a few kilometres away from the Swedish coasts, Copenhagen offers you the high colour of Scandinavian capitals. You can discover the city's riches that weaves through the canal networks through the historical districts of Christiansborg and Nyhavn. Many palaces provide an aperçu of Danish history. For eating, you can try out the smørrebrød, traditional danish sandwiches made with ham, cheese or smoked fish.

#### Day 2 - Skagen

Located on the Jutland peninsula at the tip of Denmark, where the North Sea

Wild Earth Travel

*Small Ships, Big Adventures*

**0800 945 3327** (within New Zealand) | +64 (0) 3 365 1355 | **1800 107 715** (within Australia)

info@wildearth-travel.com | **wildearth-travel.com**

# Wild Earth Travel

*Small Ships, Big Adventures*



**wildearth-travel.com**

**info@wildearth-travel.com**

and the Baltic Sea come together, the charming seaside resort of Skagen will enchant you with its immense white sandy beaches and its magnificent dune landscapes. The site is renowned for its extraordinary light and, at the end of the 19th century, was home to many Scandinavian artists, known as the Skagen Painters. Many of their works are exhibited in the town's museum today. These paintings, realist representations of the area's stunning natural setting, also provide an opportunity to discover how the inhabitants of this small fishing port lived in the last century.

## Day 3 - Marstrand

Lying 40 kilometres north of Gothenburg on Sweden's west coast, Marstrand is a small island with indefinable charm, steeped in history. With its forests, coastal paths and beaches, the island can only be visited on foot or by boat, as there are no cars. A true haven of peace, Marstrand is an unspoilt place, where the colourful local houses and pleasure yachts exist peacefully side by side. The Carlsens fortress, a former state prison and the highest point on the island, has a magnificent view of the village, the harbour and the Gothenburg archipelago.

## Day 4 - Egersund

Like a painter's palette, the former industrial town of Egersund unveils its colours as if to better charm its passing visitors. Its small wooden houses, among the best conserved in Norway, certainly display colourful façades that distinguish them from the other municipalities of the southern Norwegian coast, which opted for white at a time when this was a sign of wealth. Admire the façades of Strandgaten, the former main street of the town, and wander the old district of Hauen, which is now full of cafes, galleries and boutiques. Also make a detour to the Heidningeholmen Church, whose foundations date back to the 17th century, and dive into Egersund's past.

## Day 5 - Bergen

Located at the end of Byfjord, Bergen was the capital of Norway in the 12th and 13th Centuries and has preserved some very beautiful monuments from the time when it was home to royalty. Wandering through Bergen's streets means going back in time, in search of the hidden treasures that have been listed as World Heritage Sites by UNESCO. A veritable open-air museum, Bergen is home to a thriving artistic community of painters, potters, jewellers.

The Bergen cable car offers you a splendid panorama over the port and the surrounding fjords. Do not miss the visit to the old quarter with its narrow streets, a testimony of the power of the Hanseatic League that controlled trade in Northern Europe at the end of the Middle Ages.

## Day 5 - Sailing in the Hardangerfjord

In the heart of Norway's natural scenery, to the southeast of Bergen, you will sail the peaceful waters of the Hardangerfjord, the second longest fjord in Norway. At the wide mouth of this majestic fjord, gently sloping valleys offer the sight of lush meadows and fruit trees galore. Moreover, it is rightly nicknamed the "fruit orchard of Norway". As you continue sailing and move further inland, the fjord narrows and the rolling surroundings make way for vertiginous walls and high mountainous areas. Enhanced by the reflections of the light on the soft waters, at times clear, at times deep, the landscapes become wilder and reveal an uncut diamond of singular beauty.

## Day 6 - Ulvik

About 150 kilometres from Bergen, the little town of Ulvik is one of the rare pearls in the county of Hordaland, in the south-west of the country. You'll find it tucked away in one of the quieter Hardanger fjords. Why not spend a quiet interlude in its orchards, between the apple and cherry trees. All around, a spectacular landscape of mountains with steep rock-faces culminate in a 1,000 metre high altitude - a paradise for walkers. On the mountainsides, a few scattered farmsteads stand witness to the region's farming activity. At their feet, gentle hills of silky green tumble into the cobalt seas.

## Day 7 - Sailing in Lysefjorden

You will sail into the heart of one of Norway's most breathtaking fjords, its marvellous decor dominated by pristine nature, between vertiginous granite cliffs, crystal-clear waters and luxuriant vegetation. Very close to Stavanger, the quiet waters of Lysefjorden stretch out over around forty kilometres, beneath impressive rocks. Admire the world-famous site of Preikestolen (Pulpit Rock), a majestic cliff in the shape of a pulpit that rises to more than 600 metres above the waters. A bit further on, Flørlid, from the top of its 4,444 steps, is the world's longest wooden stairway, whereas the Kjerag, with its mythical boulder wedged between two rock faces, provides an unusual and unforgettable spectacle.

Wild Earth Travel

*Small Ships, Big Adventures*

**0800 945 3327** (within New Zealand) | +64 (0) 3 365 1355 | **1800 107 715** (within Australia)

info@wildearth-travel.com | **wildearth-travel.com**



# Wild Earth Travel

*Small Ships, Big Adventures*

**wildearth-travel.com**

**info@wildearth-travel.com**

## Day 7 - Stavanger

At the far end of the country, stands the harbour town of Stavanger, with its warm, friendly atmosphere. A friendliness you'll notice in the little old town cobbled streets, which has some 170 old wooden houses, as well as in its modern city centre, always bustling. Strategic place during the Viking era, you will be able to discover a recreated traditional village as well as the famous Swords in Rock, three granite swords standing 10 metres (33 ft) tall, symbolising the last victory of the King of Norway Harald I, in 872.

## Day 8 - Kristiansand

Located in the region of Sørlandet, the town of Kristiansand has prospered for a long time from its building industry and shipbuilding installations. Today, the town offers its timeless charm and mild climate the whole year round. You'll be amazed by its vibrant pastel colours, and its streets laid out in right angles. Among the districts worth exploring is Posebyen with its wooden houses inhabited in the olden days by workers and craftsmen. Here you can really get to grips with the town's energy.

## Day 9 - Fredrikstad

Nestling on the shores of the Glomma estuary, Fredrikstad captivates with its rich historical heritage, picturesque canals and warm atmosphere. Founded in 1567, the fortified old town still has traces of its rich past. Fall under the spell of its cobbled narrow streets, edged with traditional old wooden buildings, boutiques and lively cafes, and also discover the extremely well-preserved ramparts, built almost 5 centuries ago. Nature enthusiasts will also appreciate the magnificent hiking paths along the Oslo fjord and surrounding islands, such as Hankø, with its idyllic beaches and lush plains.

### Please note:

Itineraries are subject to change.

Wild Earth Travel

*Small Ships, Big Adventures*

**0800 945 3327** (within New Zealand) | +64 (0) 3 365 1355 | **1800 107 715** (within Australia)

info@wildearth-travel.com | **wildearth-travel.com**

# Wild Earth Travel

*Small Ships, Big Adventures*

**wildearth-travel.com**

**info@wildearth-travel.com**

## YOUR SHIP: LE CHAMPLAIN

<b>YOUR SHIP:</b>	<b>Le Champlain</b>
<b>VESSEL TYPE:</b>	<b>Luxury</b>
<b>LENGTH:</b>	<b>127 metres</b>
<b>PASSENGER CAPACITY:</b>	<b>92 cabins</b>
<b>BUILT/REFURBISHED:</b>	<b>2017/2018</b>

Featuring innovative and environmentally-friendly equipment, elegantly designed cabins, spacious suites with large windows, and lounge areas that open onto the outside, this new limited-capacity yacht boasting just 92 cabins and suites will offer you a truly unique cruising experience.

As the first ship in a new series, Le Champlain will embody the unique atmosphere that is the cruise line's hallmark: a subtle blend of refinement, intimacy and comfort.

Aboard this ship that flies the French flag, you will experience the incomparable pleasure of an intimate cruise, with the possibility of exploring an ever-increasing range of destinations in an ethnic-chic ambiance with luxury service.

Experience a luxurious setting where the accent is on authenticity and passion for travel.

### RESTAURANTS

As it is an essential part of French culture, gastronomy will naturally have pride of place aboard this new ship. Through its two restaurants, Le Champlain will invite you on a journey to elegance and epicureanism.

In a relaxed atmosphere, a first dining area located on Deck 3 and able to seat 70 will serve grilled meats daily, along with a

variety of salads and desserts.

To the back of Deck 4, you will find a 260 m<sup>2</sup> panoramic restaurant which can accommodate all of our passengers in a single sitting. Designed differently to that on our other ships, this dining area, which opens onto the outside, will have a buffet of salads, desserts and cheeses at your disposal. Our discreet and attentive crew will provide table service for hot meals.

### PUBLIC AREAS

Like Le Boreal and its sisterships, Le Champlain has many common areas that are designed and equipped to meet all of your needs while preserving the intimacy of each passenger.

A 140 m<sup>2</sup> reception area includes: A reception/concierge desk, An excursions desk, The ship's administrative services, The sales office, manned by our Guest Relations Officer, Our 50 m<sup>2</sup> boutique which sells clothing, jewellery, beauty products, postcards and various accessories, Toilets accessible to passengers with reduced mobility.

A new hydraulic platform with adjustable height provides: Easier boarding than on any other cruise ship, Easier Zodiac embarkation and disembarkation for expeditions, Easier access to the sea for swimming and practising various water sports such as kayaking or paddle-boarding.

A pool deck offering: A pool with a panoramic view, equipped with a counter-current swimming system, A pleasant solarium, An outdoor bar and lounge with armchairs and sofas.

A 200 m<sup>2</sup> main lounge which can accommodate all of our passengers to share convivial moments and to host activities organised during the day or evening.

Lastly, a theatre that seats 188, equipped with: The latest

Wild Earth Travel

*Small Ships, Big Adventures*

**0800 945 3327** (within New Zealand) | +64 (0) 3 365 1355 | **1800 107 715** (within Australia)

info@wildearth-travel.com | **wildearth-travel.com**



# Wild Earth Travel

*Small Ships, Big Adventures*



**wildearth-travel.com**

**info@wildearth-travel.com**

sound and lighting technology, A LED wall as the stage backdrop, for the projection of high-resolution images and videos.



and videos.

Wild Earth Travel

*Small Ships, Big Adventures*

**0800 945 3327** (within New Zealand) | +64 (0) 3 365 1355 | **1800 107 715** (within Australia)

info@wildearth-travel.com | **wildearth-travel.com**

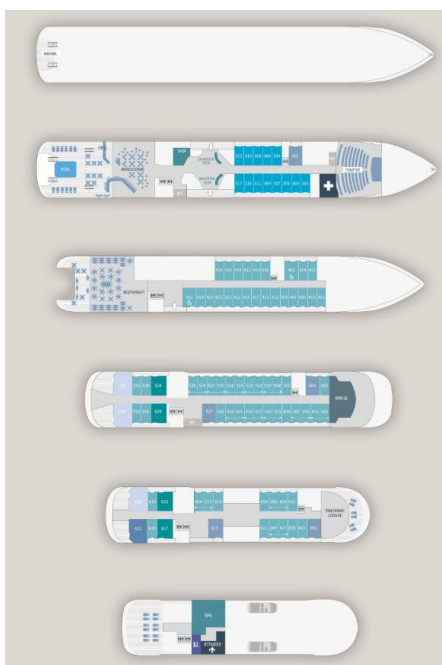
# Wild Earth Travel

*Small Ships, Big Adventures*

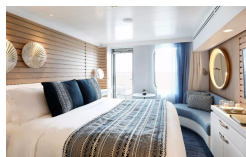
[wildearth-travel.com](http://wildearth-travel.com)

[info@wildearth-travel.com](mailto:info@wildearth-travel.com)

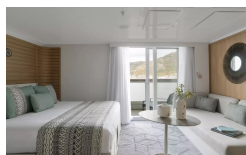
## INSIDE YOUR SHIP



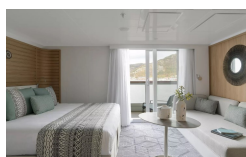
Deluxe Stateroom



Deluxe Suite Deck 4



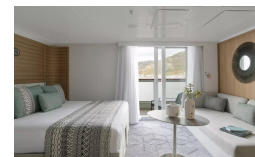
Deluxe Suite Deck 6



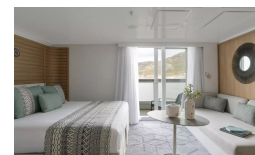
Grand Deluxe Suite Deck 6



Deluxe Suite Deck 3



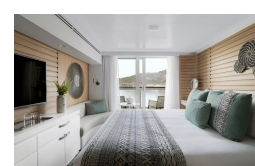
Deluxe Suite Deck 5



Grand Deluxe Suite Deck 5



Prestige Deck 4



Wild Earth Travel  
*Small Ships, Big Adventures*

0800 945 3327 (within New Zealand) | +64 (0) 3 365 1355 | 1800 107 715 (within Australia)

[info@wildearth-travel.com](mailto:info@wildearth-travel.com) | [wildearth-travel.com](http://wildearth-travel.com)



# Wild Earth Travel

*Small Ships, Big Adventures*

**wildearth-travel.com**

**info@wildearth-travel.com**

## PRICING

**12-Aug-2027 to 20-Aug-2027**

<b>Deluxe Stateroom</b>	<b>10670 AUD pp</b>
<b>Prestige Deck 4</b>	<b>11830 AUD pp</b>
<b>Prestige Deck 5</b>	<b>12420 AUD pp</b>
<b>Prestige Deck 6</b>	<b>13120 AUD pp</b>
<b>Deluxe Suite Deck 5</b>	<b>18260 AUD pp</b>
<b>Deluxe Suite Deck 6</b>	<b>18260 AUD pp</b>
<b>Deluxe Suite Deck 4</b>	<b>18260 AUD pp</b>
<b>Deluxe Suite Deck 3</b>	<b>18260 AUD pp</b>
<b>Prestige Deck 5 Suite</b>	<b>24700 AUD pp</b>
<b>Prestige Deck 6 Suite</b>	<b>25990 AUD pp</b>
<b>Privilege Suite Deck 6</b>	<b>27260 AUD pp</b>
<b>Privilege Suite Deck 5</b>	<b>27260 AUD pp</b>
<b>Grand Deluxe Suite Deck 6</b>	<b>29960 AUD pp</b>
<b>Grand Deluxe Suite Deck 5</b>	<b>29960 AUD pp</b>

**Wild Earth Travel**

*Small Ships, Big Adventures*

**0800 945 3327** (within New Zealand) | +64 (0) 3 365 1355 | **1800 107 715** (within Australia)

info@wildearth-travel.com | **wildearth-travel.com**



# Wild Earth Travel

*Small Ships, Big Adventures*



**wildearth-travel.com**

**info@wildearth-travel.com**

## SPECIAL OFFER

Online prices reflect the current brochure fare savings of up to 30%. Prices may change based on demand. Terms and conditions apply. This special offer is subject to availability. Please contact us for more details.



**Wild Earth Travel**

*Small Ships, Big Adventures*

**0800 945 3327** (within New Zealand) | +64 (0) 3 365 1355 | **1800 107 715** (within Australia)

info@wildearth-travel.com | **wildearth-travel.com**