



Wild Earth Travel

Small Ships, Big Adventures

wildearth-travel.com

info@wildearth-travel.com

JEWELS OF THE ITALIAN RIVIERA - FROM VENICE TO NICE IN LUXURY

Discover a PONANT new itinerary in the heart of Italy on an exceptional 11-day cruise. Aboard Le Bougainville, to discover natural wonders and cultural treasures of the Tyrrhenian and Adriatic coasts.

Throughout your journey, you will benefit from an excursion included per person per port of call, to choose from a selection offered by PONANT. During this cruise, admire the charms of the mythical village of Portofino; explore Lecce, known as the Florence of Southern Italy, from Otranto; or set off from Taormina to climb the mythical Mount Etna. The diversity of experiences on offer promises you intense and varied moments (to discover the full range of excursions, go to the itinerary tab).

From Nice, you will cruise towards one of most legendary parts of Italy: Cinque Terre. While enjoying a unique sailing experience, you will discover a coastline scattered with small beaches and fishing villages clinging to cliffs that form the beauty of this suspended province. Next, you will sail to Portofino. Built in a natural harbour protected by a pine forest, it is a picturesque and lively port that has successfully retained its authenticity and traditions.

Your cruise will continue along the Tuscan shoreline to Livorno, a port city famous for its Renaissance fortifications. The Little Venice district, as it is known, offers a picturesque setting in which to enjoy fish and seafood.

You will then stop at Porto Santo Stefano, a town built along a

hillside and surrounded by a 17th century fortress, before sailing on to Amalfi and its coast, which are magnificent UNESCO World Heritage Sites. Perched between sky and sea, Amalfi presents amazing landscapes.

You will then head to Taormina, overlooking Etna's blanket of snow. Its streets will lead you to its famed ancient Greek theatre, where the quality of the acoustics is exceptional.

After calls in Otranto and Ancona, Le Bougainville will reach Ravenna. Capital of the Roman Empire in the 5th century, the city bears witness to a thousand-year-old history where Roman and Byzantine cultures mingled and which can be seen today inside the city's religious buildings through its ancient mosaics.

The trip will end with a visit to the Serenissima Venice and its lagoon.

Wild Earth Travel

Small Ships, Big Adventures

0800 945 3327 (within New Zealand) | +64 (0) 3 365 1355 | **1800 107 715** (within Australia)

info@wildearth-travel.com | **wildearth-travel.com**

Wild Earth Travel

Small Ships, Big Adventures

wildearth-travel.com

info@wildearth-travel.com



The Ligurian coast will reveal the splendour of its contours as you sail along its abrupt landscapes facing the Mediterranean Sea. Listed as a UNESCO World Heritage site and a national park since 1999, the five villages of Riomaggiore, Manarola, Corniglia, Vernazza et Monterosso distil their charm and their uniqueness.

Close to the Cinque Terre, Portofino is the jewel of the Ligurian Riviera. This "small village that stretches like a half moon around a silent basin", described by Guy de Maupassant, is today a pretty, lively little port that has managed to preserve the authenticity of its maritime traditions, which have been recognised since Ancient times. Built in the hollow of a small natural cove sheltered by the pine forest, the village is at the heart of a protected maritime reserve. The shimmering colours of its house fronts and the exceptional location of this village have inspired many authors and artists. You will also see the Portofino lighthouse, immaculate in its green setting. Perched on the Punta del Capo, it watches over the peninsula and its postcard setting.

Day 3 LIVORNO

On the Ligurian coast, Livorno invites us to Tuscany, a charming region offering archaeological vestiges, Renaissance treasures, undulating landscapes and a pleasant way of life. When the Medicis arrived in the 16th century they developed the city, which became one of the most important ports in the Mediterranean. Cosmopolitan and multireligious, Livorno has welcomed many immigrants and is a wonderful example of cultural diversity. Built during that period, Fortezza Vecchia and Fortezza Nuova attest to the city's power. At the foot of the new fort, Nuova Venezia is an enchanting district with small canals and streets to stroll along to discover a few architectural treasures, such as the magnificent Santa Caterina da Siena church in the Tuscan baroque style.

Day 4 PORTO SANTO STEFANO

In Southern Tuscany, Porto Santo Stefano, a charming seaside resort located on the Monte Argentario peninsula, is renowned for its enchanting setting. Nestling on the side of a hill, the small town offers beautiful sandy beaches

its lagoon.

ITINERARY

Day 1 NICE

Capital of the Cote d'Azur, Nice is surrounded by an amphitheatre of hills and mountains that protects it from the wind. You will probably want to explore the Promenade des Anglais, where you can sit on one of the famous blue chairs laid out opposite the baie des Anges. The Chateau hill is also a very pleasant place to walk. This is the entrance to the old city, with its bustling markets and regional products along the main street, the Cours Saleya.

Day 2 SAILING OFF CINQUE TERRE & PORTOFINO

Wild Earth Travel

Small Ships, Big Adventures

0800 945 3327 (within New Zealand) | +64 (0) 3 365 1355 | 1800 107 715 (within Australia)

info@wildearth-travel.com | wildearth-travel.com



Wild Earth Travel

Small Ships, Big Adventures

wildearth-travel.com

info@wildearth-travel.com

with crystal-clear water and a picturesque town centre. Stroll around its steep alleyways lined with coloured houses and discover La Rocca, a Spanish fortress built in the 17th century to protect the town against pirate attacks. There, you can enjoy a stunning view over the port and the Gulf of Talamone.

Day 5 AMALFI

The little town of Campania gives its name to the region containing the magnificent, UNESCO World Heritage listed, Amalfi coast. And for good reason. Located at the foot of Mount Cerreto, against a rock face of a gorge that opens onto the sea, Amalfi's absolutely splendid natural scenery alone is enough to feast your eyes on before making for the medieval streets to explore some of its history. The mix of cultural influences from the Mediterranean Rim is omnipresent here.

Day 6 TAORMINA, SICILY

Located on Sicily's eastern coast, in the province of Messina, the seaside town of Taormina is Sicily's Saint-Tropez, boasting heritage sites, secluded beaches and luxury shopping. You can visit its medieval centre, suspended 300 metres above sea level, where terraces offer a spectacular view of the Mediterranean Sea. Another vestige from its past are the ruins of the Greco-Roman theatre. This extremely well-preserved site attracts visitors who are fascinated by the natural beauty of the area which overlooks a turquoise bay.

Day 7 OTRANTO

Located in the Apulia region, Otrante is the easternmost transalpine town. Behind its medieval ramparts, you will taste the sweetlife of Salento, the "heel on Italy's boot". Inhabited since Antiquity, Otrante has today become a very pleasant seaside town. Yet its history is still visible as you meander through the little streets of its old centre. With its magnificent 12th century ornamental mosaic tiling, the Cathedral is one of its most beautiful treasures. During a stroll along the ramparts, you can sit and relax at a cafe terrace.

Day 8 AT SEA

During your journey at sea, make the most of the many services and activities on board. Treat yourself to a moment of relaxation in the spa or stay in shape in the fitness centre. Depending on the season, let yourself be tempted by the swimming pool or a spot of sunbathing. This journey without a port of call will also be an opportunity to enjoy the conferences or shows proposed on board, depending on the activities offered, or to do some shopping in the boutique or to meet the PONANT photographers in their dedicated space. As for lovers of the open sea, they will be able to visit the ship's upper deck to admire the spectacle of the waves and perhaps be lucky enough to observe marine species. A truly enchanted interlude, combining comfort, rest and entertainment.

Day 9 ANCONA

Situated on the promontory of Monte Conero, Ancona, the capital of the Marche region, offers visitors all the charm of a typical Italian historical city. Founded by the Greeks in 390 BC and conquered by Julius Caesar in 49 BC, Ancona has a long history that was very much shaped by its harbour, a hub attracting different populations and cultures. When your ship calls here, take the time to discover the city's many buildings, such as the cathedral dedicated to Judas Cyriacus and its façade made of white and pink marble, the Arch of Trajan, which is considered to be the port's main embellishment, or the 15th century mansion where the painter Raphael was born and raised.

Day 10 RAVENNA

Linked to the Adriatic Sea by a canal, the city of Ravenna and its countless monuments offer you a rich journey back in time. Roman and Byzantine cultures intermingle here, and the fruits of this history adorn the interiors of the city's religious buildings: the abundance of classical mosaics is the most stunning witness to Ravenna's glorious past. Eight UNESCO World Heritage listed Paleo-Christian sites punctuate your journey into the historic heart of the

Wild Earth Travel

Small Ships, Big Adventures

0800 945 3327 (within New Zealand) | +64 (0) 3 365 1355 | **1800 107 715** (within Australia)

info@wildearth-travel.com | wildearth-travel.com



Wild Earth Travel

Small Ships, Big Adventures

wildearth-travel.com

info@wildearth-travel.com

city. Still very lively despite the weight of its history, Ravenna has much to offer to visitors.

Day 11 VENICE

Proud and eternal, Venice has reigned on its lagoon ever since the 6th century. You may think you know this city before even setting foot here. You will inevitably fall in love with the charm of the innumerable treasures of the Serenissima: Saint Mark's square, the basilica, Doges palace, the Grand Canal and the gondolas. Yet, secret Venice is also waiting for you to explore its little interlacing streets and canals, to ramble through its squares and to push open the doors of its churches. The city's extraordinary heritage shouldn't stop you from enjoying a glass of Spritz and a few tramezzini.

Please note:

Itineraries are subject to change.

Wild Earth Travel
Small Ships, Big Adventures

0800 945 3327 (within New Zealand) | +64 (0) 3 365 1355 | **1800 107 715** (within Australia)

info@wildearth-travel.com | **wildearth-travel.com**



Wild Earth Travel

Small Ships, Big Adventures

wildearth-travel.com

info@wildearth-travel.com

YOUR SHIP: LE BOUGAINVILLE

YOUR SHIP: Le Bougainville

VESSEL TYPE: Luxury

LENGTH:

PASSENGER CAPACITY: 92 cabins

BUILT/REFURBISHED: 2017/2018

Featuring innovative and environmentally-friendly equipment, elegantly designed cabins, spacious suites with large windows, and lounge areas that open onto the outside, this new limited-capacity yacht boasting just 92 cabins and suites will offer you a truly unique cruising experience.

As the first ship in a new series that remains true to the Ponant spirit, Le Bougainville will embody the unique atmosphere that is the cruise line's hallmark: a subtle blend of refinement, intimacy and comfort.

Aboard this ship that flies the French flag, you will experience the incomparable pleasure of an intimate cruise, with the possibility of exploring an ever-increasing range of destinations in an ethnic-chic ambiance with luxury service.

Experience a luxurious setting where the accent is on authenticity and passion for travel.

RESTAURANTS

As it is an essential part of French culture, gastronomy will naturally have pride of place aboard this new ship. Through its two restaurants, Le Bougainville will invite you on a journey to elegance and epicureanism.

In a relaxed atmosphere, a first dining area located on Deck 3

and able to seat 70 will serve grilled meats daily, along with a variety of salads and desserts.

To the back of Deck 4, you will find a 260 m² panoramic restaurant which can accommodate all of our passengers in a single sitting. Designed differently to that on our other ships, this dining area, which opens onto the outside, will have a buffet of salads, desserts and cheeses at your disposal. Our discreet and attentive crew will provide table service for hot meals.

PUBLIC AREAS

Like Le Boreal and its sisterships, Le Bougainville has many common areas that are designed and equipped to meet all of your needs while preserving the intimacy of each passenger.

A 140 m² reception area includes:

A reception/concierge desk, An excursions desk, The ship's administrative services, The sales office, manned by our Guest Relations Officer, Our 50 m² boutique which sells clothing, jewellery, beauty products, postcards and various accessories, Toilets accessible to passengers with reduced mobility.

A new hydraulic platform with adjustable height provides: Easier boarding than on any other cruise ship, Easier Zodiac embarkation and disembarkation for expeditions, Easier access to the sea for swimming and practising various water sports such as kayaking or paddle-boarding.

A pool deck offering: A pool with a panoramic view, equipped with a counter-current swimming system, A pleasant solarium, An outdoor bar and lounge with armchairs and sofas.

A 200 m² main lounge which can accommodate all of our passengers to share convivial moments and to host activities organised during the day or evening.

Wild Earth Travel

Small Ships, Big Adventures

0800 945 3327 (within New Zealand) | +64 (0) 3 365 1355 | **1800 107 715** (within Australia)

info@wildearth-travel.com | wildearth-travel.com

Wild Earth Travel

Small Ships, Big Adventures

wildearth-travel.com

info@wildearth-travel.com

Lastly, a theatre that seats 188, equipped with: The latest sound and lighting technology, A LED wall as the stage backdrop, for the projection of high-resolution images and videos.



and videos.

Wild Earth Travel

Small Ships, Big Adventures

0800 945 3327 (within New Zealand) | +64 (0) 3 365 1355 | **1800 107 715** (within Australia)

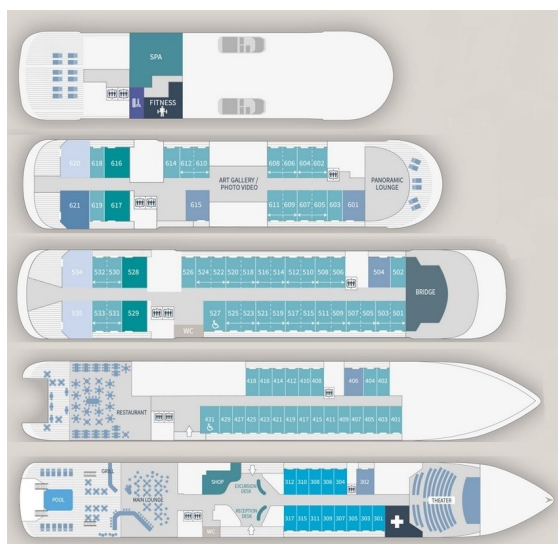
info@wildearth-travel.com | **wildearth-travel.com**



wildearth-travel.com

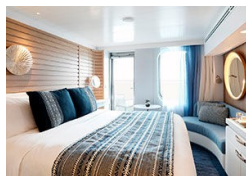
info@wildearth-travel.com

INSIDE YOUR SHIP

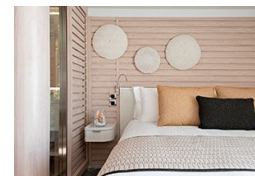


- Owner's Suite Deck 6
- Privilege Suites Deck 5-6
- Grand Deluxe Suites Deck 5-6
- Prestige Suites Deck 5-6
- Deluxe Suites Deck 5-6
- Prestige Cabins Deck 4-5-6
- Deluxe Cabins Deck 3

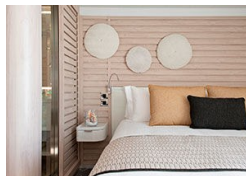
Deluxe Stateroom



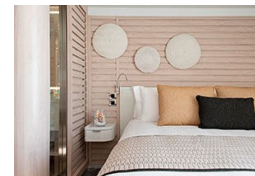
Deluxe Suite Deck 3



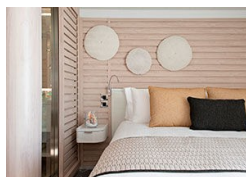
Deluxe Suite Deck 4



Deluxe Suite Deck 5



Deluxe Suite Deck 6



Grand Deluxe Suite Deck 5



Grand Deluxe Suite Deck 6



Owner's Suite





Wild Earth Travel

Small Ships, Big Adventures

wildearth-travel.com

info@wildearth-travel.com

PRICING

28-Jun-2025 to 08-Jul-2025

Deluxe Stateroom	12900 AUD pp
Prestige Deck 4	13590 AUD pp
Prestige Deck 5	14280 AUD pp
Prestige Deck 6	15090 AUD pp
Deluxe Suite Deck 3	24500 AUD pp
Deluxe Suite Deck 6	24500 AUD pp
Deluxe Suite Deck 4	24500 AUD pp
Deluxe Suite Deck 5	24500 AUD pp
Prestige Deck 5 Suite	27240 AUD pp
Prestige Deck 6 Suite	27910 AUD pp
Privilege Suite Deck 6	29280 AUD pp
Privilege Suite Deck 5	29280 AUD pp
Grand Deluxe Suite Deck 5	35410 AUD pp
Grand Deluxe Suite Deck 6	35410 AUD pp
Owner's Suite	35410 AUD pp

ADDITIONAL CHARGES:

Port Taxes 740 AUD pp



Wild Earth Travel
Small Ships, Big Adventures

0800 945 3327 (within New Zealand) | +64 (0) 3 365 1355 | **1800 107 715** (within Australia)

info@wildearth-travel.com | **wildearth-travel.com**



Wild Earth Travel

Small Ships, Big Adventures

wildearth-travel.com

info@wildearth-travel.com

SPECIAL OFFERS

Up to 30% OFF! Prices online do not show the discounted rates. Terms and Conditions apply, special offer is subject to availability, please contact us for more details.

Wild Earth Travel

Small Ships, Big Adventures

0800 945 3327 (within New Zealand) | +64 (0) 3 365 1355 | **1800 107 715** (within Australia)

info@wildearth-travel.com | **wildearth-travel.com**