

Wild Earth Travel

Small Ships, Big Adventures

wildearth-travel.com

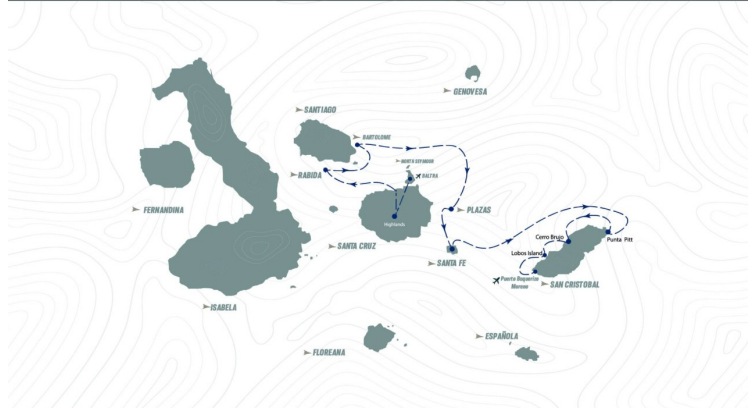
info@wildearth-travel.com

GALAPAGOS ITINERARY B ABOARD MONSERRAT YACHT

This five-day Galapagos Islands cruise embarks from Baltra Island and takes you on an extraordinary journey through some of the archipelago's most iconic and biodiverse destinations. Starting with the giant tortoise-filled Santa Cruz Highlands, the itinerary weaves through stunning islands like Rabida and Bartolome, offering dramatic volcanic landscapes and abundant marine encounters. Highlights include South Plazas' colorful wildlife, Santa Fe's unique ecosystems, and San Cristobal's Punta Pitt and Cerro Brujo, where seabirds and pristine beaches captivate. Concluding with a visit to Lobos Island before departing from San Cristobal, this adventure showcases the Galapagos' unparalleled natural wonders, though itineraries remain subject to change for an optimal experience.

ITINERARY B

5 days / 4 nights



ITINERARY

Day 1 Thursday

PM: Arrival to Baltra Island Airport

PM: Santa Cruz Highlands

Day 2 Friday

AM: Rabida Island

PM: Bartolome Island

Day 3 Saturday

Wild Earth Travel

Small Ships, Big Adventures

0800 945 3327 (within New Zealand) | +64 (0) 3 365 1355 | **1800 107 715** (within Australia)

info@wildearth-travel.com | **wildearth-travel.com**



Wild Earth Travel

Small Ships, Big Adventures



wildearth-travel.com

info@wildearth-travel.com

AM: South Plazas Island

PM: Santa Fe Island

Day 4 Sunday

AM: Punta Pitt (San Cristobal Island)

PM: Cerro Brujo (San Cristobal Island)

Day 5 Monday

AM: Lobos Island

AM: Departure from San Cristobal Island Airport

Please note:

Itineraries are subject to change.

Wild Earth Travel
Small Ships, Big Adventures

0800 945 3327 (within New Zealand) | +64 (0) 3 365 1355 | **1800 107 715** (within Australia)

info@wildearth-travel.com | **wildearth-travel.com**

Wild Earth Travel

Small Ships, Big Adventures

wildearth-travel.com

info@wildearth-travel.com

YOUR SHIP: MONSERRAT

YOUR SHIP: Monserrat

VESSEL TYPE: Small Ship

LENGTH:

PASSENGER CAPACITY: 16

BUILT/REFURBISHED: 2005

Built in 2005 and regularly refurbished, the 16 passenger Monserrat is locally owned and operated. It's the ship we use for our 11 day natural history tours. We consider it as among the highest end "tourist superior" ships out there, for its relative spaciousness (designed for 20 guests, but carrying only 16) and comfortable cabins. This configuration provides added flexibility for families and solo travellers. One of the rooms is a triple (a bunk and an extra bed).

The ship has 7 twin cabins and 3 double bed cabins located in the lower and upper decks of the yacht. All cabins have a private bathroom and air conditioning. The 6 upper deck cabins all have windows while our 4 lower deck cabins have portholes with great interior natural light. All our rooms include ensuite bathrooms with hairdryers and toiletries.



Wild Earth Travel

Small Ships, Big Adventures

0800 945 3327 (within New Zealand) | +64 (0) 3 365 1355 | **1800 107 715** (within Australia)

info@wildearth-travel.com | **wildearth-travel.com**

Wild Earth Travel

Small Ships, Big Adventures

wildearth-travel.com

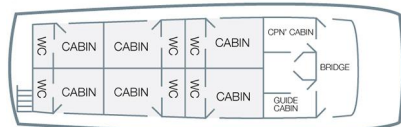
info@wildearth-travel.com

INSIDE YOUR SHIP

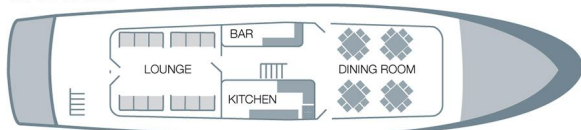
SUN DECK



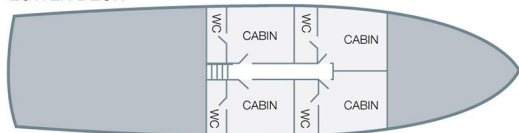
UPPER DECK



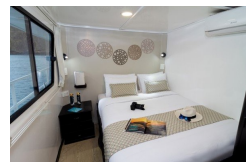
MAIN DECK



LOWER DECK



Upper Deck cabin



Wild Earth Travel
Small Ships, Big Adventures

0800 945 3327 (within New Zealand) | +64 (0) 3 365 1355 | 1800 107 715 (within Australia)

info@wildearth-travel.com | wildearth-travel.com



Wild Earth Travel

Small Ships, Big Adventures



wildearth-travel.com

info@wildearth-travel.com

PRICING

12-Mar-2026 to 16-Mar-2026

Upper Deck cabin

3795 USD pp



Wild Earth Travel

Small Ships, Big Adventures

0800 945 3327 (within New Zealand) | +64 (0) 3 365 1355 | **1800 107 715** (within Australia)

info@wildearth-travel.com | **wildearth-travel.com**