



# Wild Earth Travel

*Small Ships, Big Adventures*

**wildearth-travel.com**

**info@wildearth-travel.com**

## ISLE OF BEAUTY & ITALIAN SHORES - MEDITERRANEAN LUXURY CRUISE

This cruise, will cultivate the art of peaceful travel as well as a family spirit, thanks to its customised activities on board and on shore for youngsters, with the Kid Explorers Club.

From the pearl of the French Riviera, set sail on a 9-day cruise in the Mediterranean. Aboard *\_Le Boréal\_*, discover the Isle of Beauty and the captivating shores of northwest Italy during an unforgettable trip.

Throughout your journey, you will benefit from an excursion included per person per port of call, to choose from a selection offered by PONANT. During this cruise, dive into the teeming waters of the wild Revellata peninsula at the gates of Calvi, discover the Villa Dei Mulini, Napoleon's former winter residence in Portoferraio, or set off to discover the captivating nature of Portofino. The diversity of experiences on offer promises you intense and varied moments (to discover the full range of excursions, go to the itinerary tab).

From Nice, you will set a course towards the northern coastlines of Corsica to reach Saint-Florent. At the foot of the mountains of Cap Corse and the Agriates desert, the beauty of the landscapes gives this ancient Genoese city a picture-postcard appearance. Further south, Propriano amazes with its rich history and surprises with its incredible beauty. Here, the coastline edging the scrubland, with its distinctly Mediterranean scents, alternates between long sandy beaches and breathtaking coves.

*\_Le Boréal\_* will then stop at Porto Ercole, a charming village with colourful houses, on the Monte Argentario peninsula. Here, you will have the possibility of meeting fisherman from the Orbetello Lagoon as well as local producers. The peninsula's rolling and lush landscapes will also provide you with opportunities for magnificent hikes. Opposite the peninsula, the island of Giglio stands before you. On this mountainous land covered by garrigue on which pine forests and vineyards grow, fine sandy beaches and hidden coves compose a landscape in which the emerald sea serves as a setting for wild nature.

After a port of call at Portoferraio, a small corner of paradise on the island of Elba, where Napoleon spent many days in exile, stop in Portofino. Built in a natural harbour protected by a pine forest, it is a picturesque and lively port that has successfully retained its authenticity and traditions.

Your ship will make its way to Calvi, in the heart of the Balagne region. Between jagged peaks and sublime beaches with turquoise waters, you will enjoy the experience of wild and authentic Corsica.

Your cruise will end in Nice, famous for its never-ending riviera.

*\_Le Boréal\_* for children aged 4 to 13 years old

Wild Earth Travel

*Small Ships, Big Adventures*

**0800 945 3327** (within New Zealand) | +64 (0) 3 365 1355 | **1800 107 715** (within Australia)

info@wildearth-travel.com | **wildearth-travel.com**

# Wild Earth Travel

*Small Ships, Big Adventures*

[wildearth-travel.com](http://wildearth-travel.com)

[info@wildearth-travel.com](mailto:info@wildearth-travel.com)



the Genoese city benefits from an exceptional natural setting between the abrupt relief of the central chain, fertile hills and long sandy beaches. From the promontory of the Notre-Dame-de-la-Serra chapel, built in the 19th century on the ruins of a 15th century sanctuary, you will not miss the sublime panorama of the seaside, the mountains and the Calvi citadel. A little further west, you will have the opportunity to discover with the peninsula of Revelatta, a wilder and more preserved part of Corsica.

## Day 3 - Propriano

In southern Corsica, the small port of Propriano amazes with its rich history and surprises with its incredible beauty. Here, the coastline edging the scrubland, with its distinctly Mediterranean scents, alternates between long sandy beaches and breathtaking coves. At the heart of this wild environment, the coastal town exudes its unique atmosphere. Established in the late 2nd century B.C., the town developed thanks to Etruscan, Greek, and later Carthaginian traders. From the port, the panorama of the Gulf of Valinco is mesmerizing, as the sea spray mingles with the beautiful southern light.

## Day 4 - Porto Ercole

With its landscapes of undulating hills covered in lush meadows, narrow streets with colourful houses, and picturesque paths shaded by pines... Porto Ercole is a concentration of all of Tuscany's beauty. And what would it be without a fascinating, mystery-filled history? Overlooked by its 16th century fortress, this small village is renowned for having witnessed the final days of the famous painter Caravaggio, said to be buried there. On the Monte Argentario peninsula, you might have the chance to meet the fishermen of the Orbetello Lagoon, classed as a natural reserve, who perpetuate traditional fishing methods, or meet local wine, olive oil and cheese producers. For our sportier guests, the surrounding wild and pristine nature will provide the opportunity for a hike along the island's heights to enjoy breathtaking views.

## Day 5 - Giglio

years old\_

## ITINERARY

### Day 1 - Nice

Capital of the Cote d'Azur, Nice is surrounded by an amphitheatre of hills and mountains that protects it from the wind. You will probably want to explore the Promenade des Anglais, where you can sit on one of the famous blue chairs laid out opposite the baie des Anges. The Chateau hill is also a very pleasant place to walk. This is the entrance to the old city, with its bustling markets and regional products along the main street, the Cours Saleya.

### Day 2 - Saint-Florent, Corsica

Nestled on a rocky spur in the north-west of Corsica, the port of Calvi offers its whiteness between two sapphire-coloured bays. Capital of the Balagne region,

Wild Earth Travel

*Small Ships, Big Adventures*

0800 945 3327 (within New Zealand) | +64 (0) 3 365 1355 | 1800 107 715 (within Australia)

[info@wildearth-travel.com](mailto:info@wildearth-travel.com) | [wildearth-travel.com](http://wildearth-travel.com)





# Wild Earth Travel

*Small Ships, Big Adventures*

**wildearth-travel.com**

**info@wildearth-travel.com**

On the shores of the Tyrrhenian Sea, the small island of Giglio is home to a concentration of all of Tuscany's secrets and beauty. Fine sandy beaches and hidden coves compose a landscape in which the emerald sea serves as a setting for wild nature. This mountainous land is covered by garrigue on which pine forest and vineyards grow, a real paradise in the Mediterranean. A walk through the heart of this bucolic environment will also be the opportunity to discover rich history, as reflected in the medieval village of Giglio Castello.

## Day 6 - Portoferraio, Elba

In the elbow of a creek on the northern coastline of Elba Island, a small corner of paradise awaits in the form of Portoferraio. As you approach its coastlines, you will make out the powerful and majestic contours of its Medici fortresses. Napoleon Bonaparte spent many of his 300 days in exile here. The Palazzina dei Mulini, his first imperial residence, whose gardens offer outstanding views of the sea, is a must-see. Historical treasures are followed by another kind of treasure, namely white sand beaches, and equally tempting local specialities including gurguglione and rice with cuttlefish ink.

## Day 7 - Portofino

Close to the Cinque Terre, Portofino is the jewel of the Ligurian Riviera. This "small village that stretches like a half moon around a silent basin", described by Guy de Maupassant, is today a pretty, lively little port that has managed to preserve the authenticity of its maritime traditions, which have been recognised since Ancient times. Built in the hollow of a small natural cove sheltered by the pine forest, the village is at the heart of a protected maritime reserve. The shimmering colours of its house fronts and the exceptional location of this village have inspired many authors and artists. You will also see the Portofino lighthouse, immaculate in its green setting. Perched on the Punta del Capo, it watches over the peninsula and its postcard setting.

## Day 8 - Calvi, Corsica

In the hollow of one of the most beautiful gulfs of the Mediterranean to which it owes its name, Saint-Florent is an ancient Genoese city whose citadel dominates the bay with its circular architecture. A link between the mountains of Upper Corsica and the Agriates desert, the fishing village has become a renowned seaside resort. In front of this jewel nestled in the hollow of a wild and isolated region, sublime beaches of fine sand border a sea of infinite turquoise shades. At the western tip of the gulf, the Tower of Mortella, built in the 16th century under the Republic of Genoa to prevent from invaders, stands watch. Like most of the towers that dot the Corsican coast, it is an emblematic and familiar symbol of the island.

## Day 9 - Nice

Capital of the Cote d'Azur, Nice is surrounded by an amphitheatre of hills and mountains that protects it from the wind. You will probably want to explore the Promenade des Anglais, where you can sit on one of the famous blue chairs laid out opposite the baie des Anges. The Chateau hill is also a very pleasant place to walk. This is the entrance to the old city, with its bustling markets and regional products along the main street, the Cours Saleya.

## Please note

Itineraries are subject to change.

**Wild Earth Travel**

*Small Ships, Big Adventures*

**0800 945 3327** (within New Zealand) | +64 (0) 3 365 1355 | **1800 107 715** (within Australia)

info@wildearth-travel.com | **wildearth-travel.com**



# Wild Earth Travel

*Small Ships, Big Adventures*

**wildearth-travel.com**

**info@wildearth-travel.com**

## YOUR SHIP: LE BOREAL

<b>YOUR SHIP:</b>	<b>Le Boreal</b>
<b>VESSEL TYPE:</b>	<b>Luxury Expedition / Cruise Ship</b>
<b>LENGTH:</b>	<b>142 meters</b>
	<b>264 (in twin cabins, 200 in</b>
<b>PASSENGER CAPACITY:</b>	<b>Antarctica)</b>
<b>BUILT/REFURBISHED:</b>	<b>2011</b>

A superb mega-yacht with 132 cabins, she is the fruit of the expertise of the Italian Fincantieri shipyard and French sophistication, as interpreted by designer Jean-Philippe Nuel. Le Boreal remains faithful to our philosophy - to create a unique atmosphere, a subtle blend of luxury, intimacy and well-being. Superior materials, discreet elegance and a tasteful decor combined with exterior and interior lines to reflect a nautical mood, subtly revisited. On board, soothing neutral tones are enlivened by splashes of red, our signature theme linking tradition and innovation to create personal touches in the spirit of a "private yacht".

### Cuisine

Loyal to the great French tradition, the haute cuisine on board is worthy of the finest restaurants, where discreet, attentive service is the hallmark.

Our two restaurants welcome you for breakfasts, lunch and dinner. The Gastronomic Restaurant, with a capacity of 268 persons, is situated on Le Liberte Deck and serves you French and international cuisine accompagnied by fine wine. On the Grill Restaurant, you will have the opportunity to eat outside

and enjoy buffet lunch and themed dinner.

### Life On Board

Whether you want to join other guests in the theatre or games area (Wii™ consoles, etc), or relax on your own in a quiet corner of the library, Le Boreal has been designed to meet the needs of every guest.

Everything has been done to preserve the independence of each guest to suit their personal tastes: lounges for lectures and shows, a spa in partnership with Carita™, but also more intimate spaces such as the library and internet corner. Comfortable cabins, nearly all with private balcony, are available for families either as triples or as communicating cabins. There is also a games area with Wii™ consoles, children's menus, and a baby-sitting service. Just as if you were on a private yacht, your time is your own to do as you please.

Fitted with the latest equipment (Kinesis Wall, running machine) and in partnership with the famous Carita™ brand, the Beauty Centre on Le Boreal welcomes you for some unforgettable moments of relaxation and pampering (beauty treatments, hairdresser, hammam, balneotherapy).



Wild Earth Travel

*Small Ships, Big Adventures*

**0800 945 3327** (within New Zealand) | +64 (0) 3 365 1355 | **1800 107 715** (within Australia)

info@wildearth-travel.com | **wildearth-travel.com**





# Wild Earth Travel

*Small Ships, Big Adventures*

[wildearth-travel.com](http://wildearth-travel.com)

[info@wildearth-travel.com](mailto:info@wildearth-travel.com)



eotherapy).

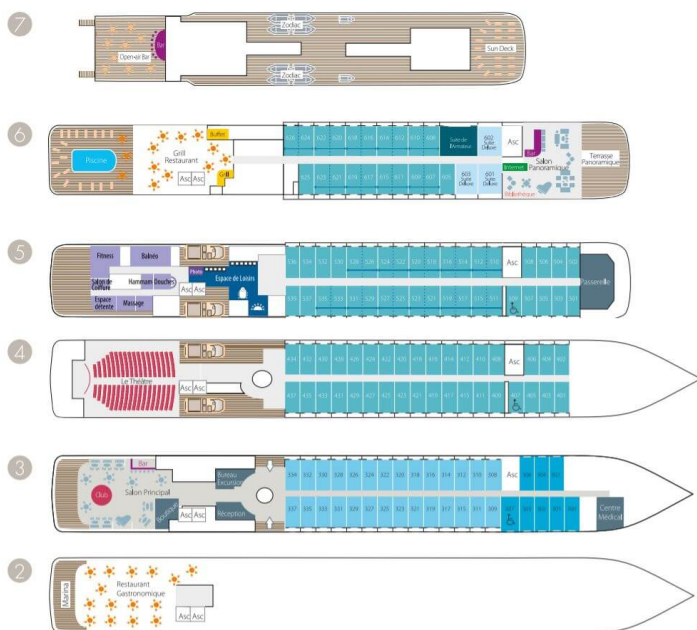


Wild Earth Travel  
*Small Ships, Big Adventures*

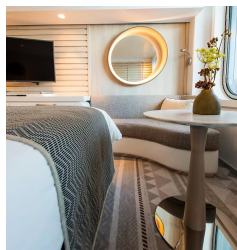
0800 945 3327 (within New Zealand) | +64 (0) 3 365 1355 | 1800 107 715 (within Australia)

[info@wildearth-travel.com](mailto:info@wildearth-travel.com) | [wildearth-travel.com](http://wildearth-travel.com)

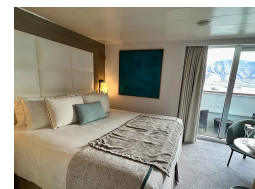
## INSIDE YOUR SHIP



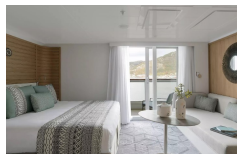
Deluxe Stateroom



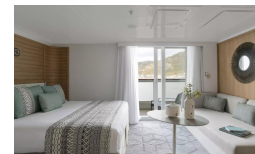
Deluxe Suite



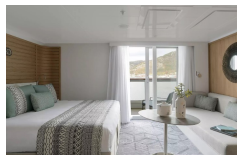
Deluxe Suite Deck 3



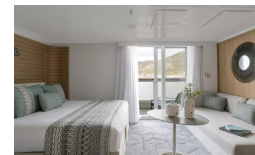
Deluxe Suite Deck 4



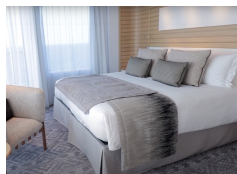
Deluxe Suite Deck 5



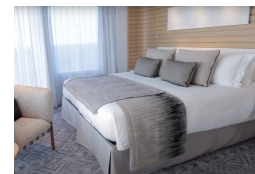
Deluxe Suite Deck 6



Grand Deluxe Suite Deck 5



Grand Deluxe Suite Deck 6





# Wild Earth Travel

*Small Ships, Big Adventures*

**wildearth-travel.com**

**info@wildearth-travel.com**

## PRICING

### 02-Jul-2026 to 10-Jul-2026

Deluxe Stateroom	10060 AUD pp
Prestige Deck 4	10600 AUD pp
Prestige Deck 5	11110 AUD pp
Prestige Deck 6	11750 AUD pp
Deluxe Suite Deck 4	19030 AUD pp
Deluxe Suite Deck 5	19030 AUD pp
Deluxe Suite Deck 6	19030 AUD pp
Deluxe Suite Deck 3	19030 AUD pp
Prestige Deck 5 Suite	21140 AUD pp
Prestige Deck 6 Suite	21670 AUD pp
Privilege Suite Deck 6	22730 AUD pp
Privilege Suite Deck 5	22730 AUD pp
Grand Deluxe Suite Deck 5	27470 AUD pp
Grand Deluxe Suite Deck 6	27470 AUD pp

### 26-Jul-2026 to 03-Aug-2026

Deluxe Stateroom	8780 AUD pp
Prestige Deck 4	9240 AUD pp
Prestige Deck 5	9700 AUD pp
Prestige Deck 6	10250 AUD pp
Deluxe Suite Deck 3	16570 AUD pp
Deluxe Suite Deck 6	16570 AUD pp
Deluxe Suite Deck 5	16570 AUD pp
Deluxe Suite Deck 4	16570 AUD pp
Prestige Deck 5 Suite	18420 AUD pp
Prestige Deck 6 Suite	18870 AUD pp
Privilege Suite Deck 5	19790 AUD pp
Privilege Suite Deck 6	19790 AUD pp
Grand Deluxe Suite Deck 6	23910 AUD pp
Grand Deluxe Suite Deck 5	23910 AUD pp

### 14-Aug-2026 to 22-Aug-2026

Superior Stateroom	7990 AUD pp
Deluxe Stateroom	8420 AUD pp
Prestige Deck 4	8870 AUD pp
Prestige Deck 5	9310 AUD pp
Prestige Deck 6	9830 AUD pp
Deluxe Suite	15900 AUD pp
Prestige Deck 5 Suite	17650 AUD pp
Prestige Deck 6 Suite	18100 AUD pp



# Wild Earth Travel

*Small Ships, Big Adventures*

**wildearth-travel.com**

**info@wildearth-travel.com**

## SPECIAL OFFERS

Online prices reflect the current brochure fare savings of up to 30%. Prices may change based on demand. Terms and conditions apply. This special offer is subject to availability. Please contact us for more details.

Wild Earth Travel

*Small Ships, Big Adventures*

**0800 945 3327** (within New Zealand) | +64 (0) 3 365 1355 | **1800 107 715** (within Australia)

info@wildearth-travel.com | **wildearth-travel.com**