



Wild Earth Travel

Small Ships, Big Adventures

wildearth-travel.com

info@wildearth-travel.com

ISLE OF BEAUTY, ITALIAN SHORES & MALTA - ITALY & FRANCE LUXURY CRUISE

From the pearl of the French Riviera to the splendid Maltese capital, set sail on an 11-day cruise in the Mediterranean Sea. Aboard *_Le_ _Dumont-d 'Urville_*, discover the Isle of Beauty and the Italian shores during an unforgettable trip.

Throughout your journey, you will benefit from an excursion included per person per port of call, to choose from a selection offered by PONANT. During this cruise, dive into the teeming waters of the wild Revellata peninsula at the gates of Calvi; discover Napoleon's residences in Portoferraio ; or discover the Greco-Roman ancient theatre from Taormina. The diversity of experiences on offer promises you intense and varied moments (to discover the full range of excursions, go to the itinerary tab).

From Nice , you will set sail for Calvi in the heart of the Balagne region. Between steep peaks and sublime beaches with turquoise waters, you will experience a wild and authentic Corsica. A little further south, at the foot of the mountains of Cap Corse and the Agriates desert , the beauty of the landscapes gives Saint-Florent a picture-postcard appearance.

After a port of call at Portoferraio , a small corner of paradise on the island of Elba, where Napoleon spent many days in exile, you will stop in Portofino. Built in a natural harbour protected by a pine forest, it is a picturesque and lively port that has successfully retained its authenticity and traditions.

Your exploration will continue to the Tuscan Island of Giglio. Then, your ship will stop at Porto Ercole , a charming Tuscan

village with colourful houses, on the Monte Argentario peninsula. Here, you will have the possibility of meeting fishermen from the Orbetello Lagoon as well as local producers. The peninsula's rolling and lush landscapes will also provide you with opportunities for magnificent outings.

A little further south, you will discover the Aeolian islands. Lipari is the capital of the Aeolian volcanic archipelago and is renowned for its many natural and architectural gems.

Taormina , overlooking Etna 's blanket of snow. Its streets will lead you to its famed ancient Greek theatre , where the quality of the acoustics is exceptional.

Your cruise will come to an end in Valletta , capital of the island of Malta and former stronghold of the Knights of the Order of Malta.

Wild Earth Travel

Small Ships, Big Adventures

0800 945 3327 (within New Zealand) | +64 (0) 3 365 1355 | **1800 107 715** (within Australia)

info@wildearth-travel.com | **wildearth-travel.com**

Wild Earth Travel

Small Ships, Big Adventures

wildearth-travel.com

info@wildearth-travel.com



r of Malta.

ITINERARY

Day 1 - Nice

Capital of the Cote d'Azur, Nice is surrounded by an amphitheatre of hills and mountains that protects it from the wind. You will probably want to explore the Promenade des Anglais, where you can sit on one of the famous blue chairs laid out opposite the baie des Anges. The Chateau hill is also a very pleasant place to walk. This is the entrance to the old city, with its bustling markets and regional products along the main street, the Cours Saleya.

Day 2 - Calvi, Corsica

Nestled on a rocky spur in the north-west of Corsica, the port of Calvi offers its

whiteness between two sapphire-coloured bays. Capital of the Balagne region, the Genoese city benefits from an exceptional natural setting between the abrupt relief of the central chain, fertile hills and long sandy beaches. From the promontory of the Notre-Dame-de-la-Serra chapel, built in the 19th century on the ruins of a 15th century sanctuary, you will not miss the sublime panorama of the seaside, the mountains and the Calvi citadel. A little further west, you will have the opportunity to discover with the peninsula of Revelatta, a wilder and more preserved part of Corsica.

Day 3 - Saint-Florent, Corsica

In the hollow of one of the most beautiful gulfs of the Mediterranean to which it owes its name, Saint-Florent is an ancient Genoese city whose citadel dominates the bay with its circular architecture. A link between the mountains of Upper Corsica and the Agriates desert, the fishing village has become a renowned seaside resort. In front of this jewel nestled in the hollow of a wild and isolated region, sublime beaches of fine sand border a sea of infinite turquoise shades. At the western tip of the gulf, the Tower of Mortella, built in the 16th century under the Republic of Genoa to prevent from invaders, stands watch. Like most of the towers that dot the Corsican coast, it is an emblematic and familiar symbol of the island.

Day 4 - Portoferraio, Elba

In the elbow of a creek on the northern coastline of Elba Island, a small corner of paradise awaits in the form of Portoferraio. As you approach its coastlines, you will make out the powerful and majestic contours of its Medici fortresses. Napoleon Bonaparte spent many of his 300 days in exile here. The Palazzina dei Mulini, his first imperial residence, whose gardens offer outstanding views of the sea, is a must-see. Historical treasures are followed by another kind of treasure, namely white sand beaches, and equally tempting local specialities including gurguglione and rice with cuttlefish ink.

Day 5 - Portofino

Wild Earth Travel

Small Ships, Big Adventures

0800 945 3327 (within New Zealand) | +64 (0) 3 365 1355 | 1800 107 715 (within Australia)

info@wildearth-travel.com | wildearth-travel.com



Wild Earth Travel

Small Ships, Big Adventures

wildearth-travel.com

info@wildearth-travel.com

Day 8 - At sea

Close to the Cinque Terre, Portofino is the jewel of the Ligurian Riviera. This "small village that stretches like a half moon around a silent basin", described by Guy de Maupassant, is today a pretty, lively little port that has managed to preserve the authenticity of its maritime traditions, which have been recognised since Ancient times. Built in the hollow of a small natural cove sheltered by the pine forest, the village is at the heart of a protected maritime reserve. The shimmering colours of its house fronts and the exceptional location of this village have inspired many authors and artists. You will also see the Portofino lighthouse, immaculate in its green setting. Perched on the Punta del Capo, it watches over the peninsula and its postcard setting.

During your journey at sea, make the most of the many services and activities on board. Treat yourself to a moment of relaxation in the spa or stay in shape in the fitness centre. Depending on the season, let yourself be tempted by the swimming pool or a spot of sunbathing. This journey without a port of call will also be an opportunity to enjoy the conferences or shows proposed on board, depending on the activities offered, or to do some shopping in the boutique or to meet the PONANT photographers in their dedicated space. As for lovers of the open sea, they will be able to visit the ship's upper deck to admire the spectacle of the waves and perhaps be lucky enough to observe marine species. A truly enchanted interlude, combining comfort, rest and entertainment.

Day 6 - Giglio

On the shores of the Tyrrhenian Sea, the small island of Giglio is home to a concentration of all of Tuscany's secrets and beauty. Fine sandy beaches and hidden coves compose a landscape in which the emerald sea serves as a setting for wild nature. This mountainous land is covered by garrigue on which pine forest and vineyards grow, a real paradise in the Mediterranean. A walk through the heart of this bucolic environment will also be the opportunity to discover rich history, as reflected in the medieval village of Giglio Castello.

Day 9 - Lipari, Aeolian Islands

Of the seven Aeolian islands, this is the largest and the most populated. Lying off the north coast of Sicily, in the Tyrrhenian sea, Lipari is one of UNESCO's marvellous World Heritage sites. Its lava stone quarries and obsidian flow of Rocce Rosse are indications of its volcanic nature. The town, the largest urban area in the whole archipelago, proudly houses its citadel and its castle, both rooted in Antiquity. If you head further into the centre, you'll be surprised to come across a Norman cathedral, complete with a magnificent baroque façade.

Day 7 - Porto Ercole

With its landscapes of undulating hills covered in lush meadows, narrow streets with colourful houses, and picturesque paths shaded by pines... Porto Ercole is a concentration of all of Tuscany's beauty. And what would it be without a fascinating, mystery-filled history? Overlooked by its 16th century fortress, this small village is renowned for having witnessed the final days of the famous painter Caravaggio, said to be buried there. On the Monte Argentario peninsula, you might have the chance to meet the fishermen of the Orbetello Lagoon, classed as a natural reserve, who perpetuate traditional fishing methods, or meet local wine, olive oil and cheese producers. For our sportier guests, the surrounding wild and pristine nature will provide the opportunity for a hike along the island's heights to enjoy breathtaking views.

Day 10 - Taormina, Sicily

Located on Sicily's eastern coast, in the province of Messina, the seaside town of Taormina is Sicily's Saint-Tropez, boasting heritage sites, secluded beaches and luxury shopping. You can visit its medieval centre, suspended 300 metres above sea level, where terraces offer a spectacular view of the Mediterranean Sea. Another vestige from its past are the ruins of the Greco-Roman theatre. This extremely well-preserved site attracts visitors who are fascinated by the natural beauty of the area which overlooks a turquoise bay.

Wild Earth Travel

Small Ships, Big Adventures

0800 945 3327 (within New Zealand) | +64 (0) 3 365 1355 | **1800 107 715** (within Australia)

info@wildearth-travel.com | **wildearth-travel.com**



Wild Earth Travel

Small Ships, Big Adventures

wildearth-travel.com

info@wildearth-travel.com

Day 11 - Valletta

The whole of the Maltese capital Valletta is UNESCO World Heritage listed and occupies a peninsula in the north-east of the island. From the fountain of Tritons to Saint-Elme fort, there are as many majestic streets as there are narrow staircase vennels to explore. The painted loggia and carved corbels on the tall houses will accompany you in your explorations, and you'll rarely be bothered by traffic. You can visit the Grandmasters palace decorated with coats of arms and frescoes. Saint-John's cathedral and the ramparts which have guarded the city since the 16th century are also among the most emblematic sites of the city. Arranged in terraces, the Barrakka Gardens will punctuate your promenade with a green and floral experience.

Please note:

Itineraries are subject to change.

Wild Earth Travel

Small Ships, Big Adventures

0800 945 3327 (within New Zealand) | +64 (0) 3 365 1355 | **1800 107 715** (within Australia)

info@wildearth-travel.com | **wildearth-travel.com**



Wild Earth Travel

Small Ships, Big Adventures

wildearth-travel.com

info@wildearth-travel.com

YOUR SHIP: LE DUMONT D'URVILLE

YOUR SHIP: Le Dumont d'Urville

VESSEL TYPE: Luxury

LENGTH:

PASSENGER CAPACITY: 92 cabins

BUILT/REFURBISHED: 2017/2018

Featuring innovative and environmentally-friendly equipment, elegantly designed staterooms, spacious suites with large windows, and lounge areas that open onto the outside, this new limited-capacity yacht boasting just 92 staterooms and suites will offer you a truly unique cruising experience.

As the first ship in a new series that remains true to the Ponant spirit, Le Dumont d'Urville will embody the unique atmosphere that is the cruise line's hallmark: a subtle blend of refinement, intimacy and comfort.

Aboard this ship that flies the French flag, you will experience the incomparable pleasure of an intimate cruise, with the possibility of exploring an ever-increasing range of destinations in an ethnic-chic ambiance with luxury service.

Experience a luxurious setting where the accent is on authenticity and passion for travel.

RESTAURANTS

As it is an essential part of French culture, gastronomy will naturally have pride of place aboard this new ship. Through its two restaurants, Le Dumont d'Urville will invite you on a journey to elegance and epicureanism.

In a relaxed atmosphere, a first dining area located on Deck 3

and able to seat 70 will serve grilled meats daily, along with a variety of salads and desserts.

To the back of Deck 4, you will find a 260 m² panoramic restaurant which can accommodate all of our passengers in a single sitting. Designed differently to that on our other ships, this dining area, which opens onto the outside, will have a buffet of salads, desserts and cheeses at your disposal. Our discreet and attentive crew will provide table service for hot meals.

PUBLIC AREAS

Like Le Boreal and its sisterships, Le Dumont d'Urville has many common areas that are designed and equipped to meet all of your needs while preserving the intimacy of each passenger.

A 140 m² reception area includes: A reception/concierge desk, An excursions desk, The ship's administrative services, The sales office, manned by our Guest Relations Officer, Our 50 m² boutique which sells clothing, jewellery, beauty products, postcards and various accessories, Toilets accessible to passengers with reduced mobility.

A new hydraulic platform with adjustable height provides: Easier boarding than on any other cruise ship, Easier Zodiac embarkation and disembarkation for expeditions, Easier access to the sea for swimming and practising various water sports such as kayaking or paddle-boarding.

A pool deck offering: A pool with a panoramic view, equipped with a counter-current swimming system, A pleasant solarium, An outdoor bar and lounge with armchairs and sofas. A 200 m² main lounge which can accommodate all of our passengers to share convivial moments and to host activities organised during the day or evening.

Wild Earth Travel

Small Ships, Big Adventures

0800 945 3327 (within New Zealand) | +64 (0) 3 365 1355 | **1800 107 715** (within Australia)

info@wildearth-travel.com | wildearth-travel.com

Wild Earth Travel

Small Ships, Big Adventures

wildearth-travel.com

info@wildearth-travel.com

Lastly, a theatre that seats 188, equipped with: The latest sound and lighting technology, A LED wall as the stage backdrop, for the projection of high-resolution images and videos.



and videos.

Wild Earth Travel

Small Ships, Big Adventures

0800 945 3327 (within New Zealand) | +64 (0) 3 365 1355 | **1800 107 715** (within Australia)

info@wildearth-travel.com | **wildearth-travel.com**



wildearth-travel.com

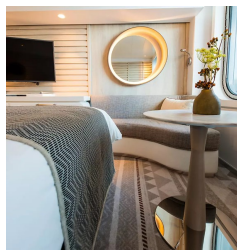
info@wildearth-travel.com

INSIDE YOUR SHIP

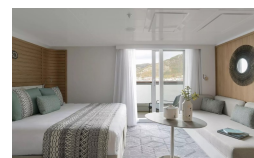


- Owner's Suite Deck 6
- Privilege Suites Deck 5-6
- Grand Deluxe Suites Deck 5-6
- Prestige Suites Deck 5-6
- Deluxe Suites Deck 5-6
- Prestige Cabins Deck 4-5-6
- Deluxe Cabins Deck 3

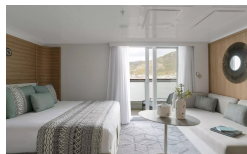
Deluxe Stateroom



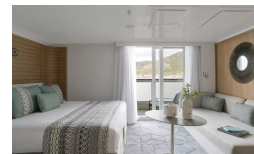
Deluxe Suite Deck 3



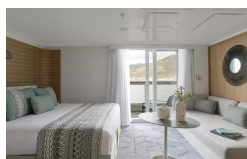
Deluxe Suite Deck 4



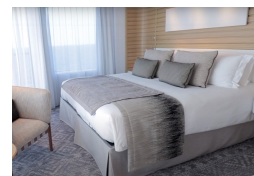
Deluxe Suite Deck 5



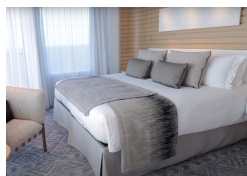
Deluxe Suite Deck 6



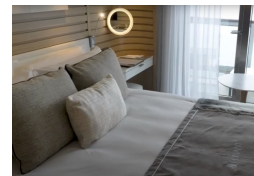
Grand Deluxe Suite Deck 5



Grand Deluxe Suite Deck 6



Prestige Deck 4





Wild Earth Travel

Small Ships, Big Adventures

wildearth-travel.com

info@wildearth-travel.com

PRICING

19-Aug-2026 to 29-Aug-2026

Deluxe Stateroom	10350 AUD pp
Prestige Deck 4	10880 AUD pp
Prestige Deck 5	11420 AUD pp
Prestige Deck 6	12060 AUD pp
Deluxe Suite Deck 5	19480 AUD pp
Deluxe Suite Deck 3	19480 AUD pp
Deluxe Suite Deck 4	19480 AUD pp
Deluxe Suite Deck 6	19480 AUD pp
Prestige Deck 5 Suite	21630 AUD pp
Prestige Deck 6 Suite	22170 AUD pp
Privilege Suite Deck 5	23240 AUD pp
Privilege Suite Deck 6	23240 AUD pp
Grand Deluxe Suite Deck 5	28070 AUD pp
Grand Deluxe Suite Deck 6	28070 AUD pp



Wild Earth Travel
Small Ships, Big Adventures

0800 945 3327 (within New Zealand) | +64 (0) 3 365 1355 | **1800 107 715** (within Australia)

info@wildearth-travel.com | **wildearth-travel.com**



Wild Earth Travel

Small Ships, Big Adventures

wildearth-travel.com

info@wildearth-travel.com

SPECIAL OFFERS

Online prices reflect the current brochure fare savings of up to 30%. Prices may change based on demand. Terms and conditions apply. This special offer is subject to availability. Please contact us for more details.

Wild Earth Travel

Small Ships, Big Adventures

0800 945 3327 (within New Zealand) | +64 (0) 3 365 1355 | **1800 107 715** (within Australia)

info@wildearth-travel.com | **wildearth-travel.com**