

Wild Earth Travel

Small Ships, Big Adventures

wildearth-travel.com

info@wildearth-travel.com

SCOTLAND'S ISLE OF MULL AND SMALL ISLES EXPLORER CRUISE

Enjoy an extraordinary voyage of seven nights exploring the Sound of Mull and the Small Isles. The Isle of Mull, inhabited since 6000 BC, is the quintessential island of the Inner Hebrides and rich in Scottish history. The outlying Small isles, Muck, Eigg, Rum and Canna, are justly famous for their sheltered anchorages, spectacular birdlife and ever-changing, island scenery. History, wildlife, spectacular islands and breathtaking mountains, this is a truly unforgettable Scottish cruise. Don't forget your hiking boots for stunning island walks!



ITINERARY

Days 1 - 7 Isle of Mull and Small Isles

Some of the places we may visit are:

Oban: Your departure point will be Oban (Dunstaffnage Marina), the gateway to the Hebridean isles. After a short introduction to life on board our small ship we depart for our first destination.

Loch Aline: In the picturesque Loch Aline there are woodland walks and, at the head of the loch, is ancient Ardtornish estate and woodland gardens.

Loch Drumbuie: A squeeze between high sided cliffs and we are in a perfectly sheltered anchorage. A lovely location for going sea kayaking or for a swim.

Canna, the Small Isles: Canna is possibly the most beautiful of all the Small islands. Its 200 metre high cliffs of Compass Hill rise dramatically out of the sea and we have a good chance of seeing both sea and golden eagles. The anchorage on Canna is one of the best of the Small Isles and a stroll ashore to see the puffins and wild flower meadows of Sanday's Machair is a pure delight.

Muck, the Small Isles: The small island of Muck (Muck is Gaelic for 'Pig') is only a couple of miles long and a mile wide. Ashore there are wonderful coastal walks and many seabirds. On Horse Island, which is accessible at low water, there is a colony of puffins.

Eigg, the Small Isles: The "Sgurr of Eigg", an ancient, eroded volcanic plug that creates a dramatic cliff on the east side of the island and a high ridge which runs west. There are beautiful white-sand bays and a quartz beach that creates the famous "singing sands".

Rum, Loch Scresort, the Small Isles: Rum Island is a National Nature Reserve and famous for its herds of red deer and sheer sea cliffs which are home to nesting sea eagles. A visit to the Kinloch castle near the anchorage or

Wild Earth Travel

Small Ships, Big Adventures

0800 945 3327 (within New Zealand) | +64 (0) 3 365 1355 | 1800 107 715 (within Australia)

info@wildearth-travel.com | wildearth-travel.com

Wild Earth Travel

Small Ships, Big Adventures



wildearth-travel.com

info@wildearth-travel.com

a guided walk and talk with the ranger Trudi Clarke is definitely worthwhile. Tobermory: One of the most picturesque towns in the Hebrides. If you wish, we can make time to visit the local distillery or visit eagles (Mull is the best place in the UK to see eagles). Loch Spelve: A loch on the south side of Mull. To enter we have to negotiate the narrow entrance. The anchorage in this sheltered loch, which is surrounded by an ancient oak forest, gives us unparalleled views of the mountains of Mull. There are resident otters along its shoreline.

Please Note:

Please note that your voyage is weather dependent. Weather doesn't just mean good or bad weather. There are many considerations such as tidal gates, wind direction and strength, the strength and direction of currents, overfalls, and fetch. If you wish to visit a specific place or have a specific experience, such as fly fishing, sea eagle tours, whisky tasting, then please do let your skipper know and he will endeavour to meet your request.

Wild Earth Travel

Small Ships, Big Adventures

0800 945 3327 (within New Zealand) | +64 (0) 3 365 1355 | **1800 107 715** (within Australia)

info@wildearth-travel.com | **wildearth-travel.com**

Wild Earth Travel

Small Ships, Big Adventures

wildearth-travel.com

info@wildearth-travel.com

YOUR SHIP: GEMINI EXPLORER

YOUR SHIP:	Gemini Explorer
VESSEL TYPE:	Small Ship
LENGTH:	72 feet / 21.9 meters
PASSENGER CAPACITY:	8
BUILT/REFURBISHED:	1974 / 2020

The new mini cruise ship is a historic, converted cruising lifeboat that once roamed the Western Approaches and was involved in the storm of the ill-fated 1979 Fastnet Race. Gemini Explorer was built in 1974 in Bideford Shipyard as the _City of Bristol_ (70-003), one of three, Clyde class, cruising lifeboats with an extended offshore range of 1700 miles. She is powered by two powerful Gardner diesel engines and she will achieve speeds of up to twelve knots. The Gemini Explorer entered service at the Clovelly Lifeboat Station on the North Devonshire coast and, after saving 44 lives, was finally retired in 1989.

Since then, after extensive re-fits and modifications (including a new galley, high bulwarks, viewing top deck, en-suite accommodation and a well lit saloon), she has been converted to a mini cruise ship and today sails as the _Gemini Explorer_. However, there are parts of the insides of the vessel that have been kept in their original state to give an exciting insight in to role she once played as a cruising lifeboat.

As a mini cruise ship she has voyaged as far away as Greenland and, for the last 10 years, sailed as a charter vessel on the east coast of Scotland. In 2020 after a further refit and upgrade she will be sailing the beautiful islands and sea lochs of Scotland's

west coast as part of St Hilda Sea Adventures little fleet.

The deck saloon is where everyone dines and socialises and where everyone enjoys a convivial atmosphere that is encouraged by shipboard life aboard this ex-cruising lifeboat.

Cabins are warm and comfortable with eight berths for our guests. In the forward part of the vessel there is a double en-suite, a twin en-suite and single en-suite. In the aft part of the vessel there is a cabin which has a one double bed and two single berths. We are happy to offer this cabin to two guests only, without supplement. This aft cabin shares the bathroom with the two crew.

All en-suites and the bathroom have a washbasin, toilet and shower. All cabin linen and towels are supplied.

There is an upper viewing deck complete with teak benches and perfect for spotting wildlife and relaxing. You also have some deck space to embark your own equipment such as kayaks and paddleboards. You will also be able to use the onboard two person sea kayak.



sea kayak.

Wild Earth Travel

Small Ships, Big Adventures

0800 945 3327 (within New Zealand) | +64 (0) 3 365 1355 | **1800 107 715** (within Australia)

info@wildearth-travel.com | **wildearth-travel.com**

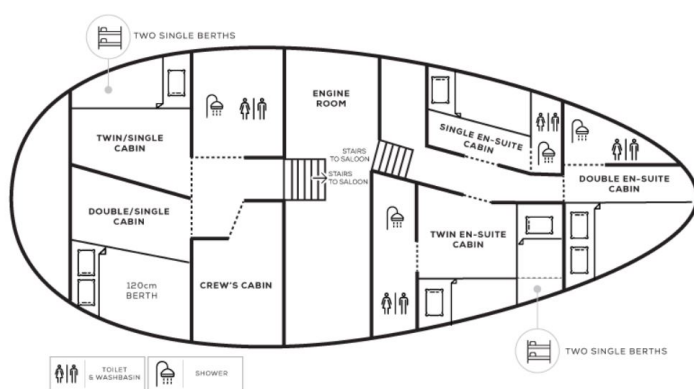
Wild Earth Travel

Small Ships, Big Adventures

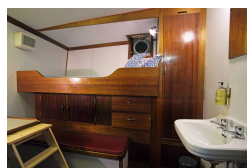
wildearth-travel.com

info@wildearth-travel.com

INSIDE YOUR SHIP



Double / Twin Cabin En-suite



Single Cabin



Single Cabin En-suite



Twin Cabin Semi En-suite



Double Cabin En-suite



Single Cabin En-suite



Twin / Double Cabin En-suite



Wild Earth Travel

Small Ships, Big Adventures

0800 945 3327 (within New Zealand) | +64 (0) 3 365 1355 | 1800 107 715 (within Australia)

info@wildearth-travel.com | wildearth-travel.com

Wild Earth Travel

Small Ships, Big Adventures

wildearth-travel.com

info@wildearth-travel.com

PRICING

13-Jul-2025 to 19-Jul-2025

Twin Cabin	1365 GBP pp
Twin Cabin En-suite	1855 GBP pp
Double Cabin En-suite	2170 GBP pp

28-Aug-2025 to 03-Sep-2025

Single Cabin	1470 GBP pp
Twin Cabin	1620 GBP pp
Single Cabin En-suite	2160 GBP pp
Twin / Double Cabin En-suite	2160 GBP pp

29-Aug-2025 to 04-Sep-2025

Twin Cabin	1365 GBP pp
Twin Cabin En-suite	1855 GBP pp
Double Cabin En-suite	2170 GBP pp

30-Aug-2025 to 05-Sep-2025

Twin Cabin En-suite	2160 GBP pp
Double Cabin adjacent En-suite	2280 GBP pp
Double Cabin En-suite	2430 GBP pp

19-Sep-2025 to 25-Sep-2025

Single Cabin	2020 GBP pp
Twin Cabin Semi En-suite	2140 GBP pp
Double / Twin Cabin En-suite	2260 GBP pp
Special Departure - A Guided Wildlife Tour	0 pp

23-Sep-2025 to 29-Sep-2025

Twin Cabin	1365 GBP pp
Twin Cabin En-suite	1855 GBP pp
Double Cabin En-suite	2170 GBP pp

23-Sep-2025 to 29-Sep-2025

Single Cabin	1470 GBP pp
Twin Cabin	1620 GBP pp
Single Cabin En-suite	2160 GBP pp
Twin / Double Cabin En-suite	2160 GBP pp

25-Sep-2025 to 01-Oct-2025

Twin Cabin En-suite	2160 GBP pp
Double Cabin adjacent En-suite	2280 GBP pp
Double Cabin En-suite	2430 GBP pp

14-Apr-2026 to 20-Apr-2026

Single Cabin	2050 GBP pp
Twin Cabin Semi En-suite	2200 GBP pp
Double / Twin Cabin En-suite	2380 GBP pp

27-Apr-2026 to 03-May-2026

Twin Cabin En-suite	2160 GBP pp
Double Cabin adjacent En-suite	2160 GBP pp
Double Cabin En-suite	2400 GBP pp

01-May-2026 to 07-May-2026

Wild Earth Travel
Small Ships, Big Adventures

0800 945 3327 (within New Zealand) | +64 (0) 3 365 1355 | **1800 107 715** (within Australia)

info@wildearth-travel.com | wildearth-travel.com



Wild Earth Travel

Small Ships, Big Adventures



wildearth-travel.com

info@wildearth-travel.com

Twin Cabin	1400 GBP pp
Twin Cabin En-suite	1890 GBP pp
Double Cabin En-suite	2275 GBP pp

Wild Earth Travel

Small Ships, Big Adventures

0800 945 3327 (within New Zealand) | +64 (0) 3 365 1355 | **1800 107 715** (within Australia)

info@wildearth-travel.com | **wildearth-travel.com**

Wild Earth Travel

Small Ships, Big Adventures

wildearth-travel.com

info@wildearth-travel.com

PRICING

24-Jun-2026 to 30-Jun-2026

Twin Cabin	1400 GBP pp
Twin Cabin En-suite	1890 GBP pp
Double Cabin En-suite	2275 GBP pp

18-Aug-2026 to 24-Aug-2026

Single Cabin	1500 GBP pp
Twin Cabin	1650 GBP pp
Single Cabin En-suite	2280 GBP pp
Twin / Double Cabin En-suite	2280 GBP pp

28-Aug-2026 to 03-Sep-2026

Twin Cabin	1400 GBP pp
Twin Cabin En-suite	1890 GBP pp
Double Cabin En-suite	2275 GBP pp

01-Sep-2026 to 07-Sep-2026

Single Cabin	2050 GBP pp
Twin Cabin Semi En-suite	2200 GBP pp
Double / Twin Cabin En-suite	2380 GBP pp

08-Sep-2026 to 14-Sep-2026

Twin Cabin En-suite	2160 GBP pp
Double Cabin adjacent En-suite	2160 GBP pp
Double Cabin En-suite	2400 GBP pp

22-Sep-2026 to 28-Sep-2026

Twin Cabin	1400 GBP pp
Twin Cabin En-suite	1890 GBP pp
Double Cabin En-suite	2275 GBP pp

23-Sep-2026 to 29-Sep-2026

Single Cabin	1500 GBP pp
Twin Cabin	1650 GBP pp
Single Cabin En-suite	2280 GBP pp
Twin / Double Cabin En-suite	2280 GBP pp

27-Sep-2026 to 03-Oct-2026

Single Cabin	2050 GBP pp
Twin Cabin Semi En-suite	2200 GBP pp
Double / Twin Cabin En-suite	2380 GBP pp