



# Wild Earth Travel

*Small Ships, Big Adventures*

**wildearth-travel.com**

**info@wildearth-travel.com**

## ISLANDS, CITIES AND VOLCANOES OF INDONESIA - 15 DAYS FROM BALI TO SINGAPORE

From Bali to Singapore, set sail aboard Le Jacques-Cartier for a brand-new 15-day expedition cruise to the heart of fascinating Indonesia. Take a unique trip to discover the world's largest archipelagic state, featuring ancient temples and modern cities, impenetrable jungle and majestic volcanoes, historic towns and chains of idyllic islands. And of course, there will be precious encounters with a diverse population.

You will reach Probolinggo, one of the access points to Mount Bromo. This active volcano in the Tengger mountains stands 2,329 metres tall in the middle of a protected nature reserve.

When your ship calls at Semarang, a cosmopolitan city with Chinese, Indo-Arab and European influences, you will visit the incredible site of Borobudur. Listed as a UNESCO World Heritage Site, this monumental Buddhist temple compounds from the 8th and 9th centuries is an artistic marvel with over 500 Buddha statues.

Next, Le Jacques-Cartier will set a course for the south-western tip of Java. On the edge of the Sunda Strait, you will discover Ujung Kulon National Park. In addition to being a place of great natural beauty and of geological interest, notably for the study of island volcanoes, the park contains the largest remaining area of lowland rainforests on the island. It also includes the Krakatau Nature Reserve, and you will have the chance to observe the volcano during a unique sailing experience.

You will sail along the west coast of Sumatra and call at

Bengkulu, a former trading centre of the British East India Company, before reaching the Mentawais, a group of heavenly islands edged with beaches of white sand and covered in jungle. You will stop at one of these deserted beaches to swim and explore the underwater environment with a mask and snorkel.

Further north, the Nias Archipelago is known for its unique megalithic culture and its spellbinding traditional music. The Simeulue archipelago, which includes the Banyak Islands, is a mix of atolls, cays and islets featuring numerous beaches of white sand, coral reefs, and clear, warm tropical waters. There, you will discover Pulau Asok, a lagoon ideal for free-diving, swimming and kayaking, thanks to its gently sloping, unspoiled beaches lined with coconut trees.

Next, your ship will round the northern tip of Sumatra via Banda Aceh. The city has been entirely rebuilt after being ravaged by the Boxing Day 2004 tsunami.

This fabulous odyssey continues as the glorious shoreline of West Malaysia slowly emerges before you. You will sail the Malacca Strait, the former strategic crossroads on the silk and spice roads, to discover the beautiful cities of Penang and Malacca, UNESCO World Heritage Sites with fascinating Asian, Portuguese and Dutch heritage.

In Singapore, city-State on the edges of the Orient, you will be seduced by the unique multicultural atmosphere of this "garden

Wild Earth Travel

*Small Ships, Big Adventures*

**0800 945 3327** (within New Zealand) | +64 (0) 3 365 1355 | **1800 107 715** (within Australia)

info@wildearth-travel.com | **wildearth-travel.com**

# Wild Earth Travel

*Small Ships, Big Adventures*

**wildearth-travel.com**

**info@wildearth-travel.com**

city", home to wonderful botanical tropical gardens, UNESCO World Heritage Sites.



tage Sites.

## ITINERARY

### Day 1 BENOA, BALI

If it's a taste of exotic authenticity you're after, prepare to be spell-bound by the island of Bali, tucked away in the heart of the Indonesian archipelago. The beauty and diversity of its landscapes, the depth and richness of its cultural heritage and the plethora of activities on offer here make Bali a little slice of heaven on Earth. The island's southern coast enthral with its white sand beaches, its picturesque little fishing villages such as Benoa, and its hills patchworked with terraced rice paddies further inland. Nicknamed 'the Island of Gods' for its sumptuous temples, Bali is the beating heart of Indonesian Hinduism.

### Day 2 PROBOLINGGO, JAVA

Nestled inside the massive Tengger caldera surrounded by a sea of sand, Mount Bromo is the epitome of desolate beauty. The volcanic complex dates back to about 820,000 years ago and consists of five overlapping stratovolcanoes, each truncated by a caldera. Lava domes, pyroclastic cones, and a maar occupy the flanks of the massif. The surreal lunar landscape has spawned countless legends and myths. Mt Bromo has particular significance for the Hindu Tengger people who believe that this was the site where a brave prince sacrificed his life for his family. After an early departure from the ship guest will travel by bus to Mount Bromo to enjoy this surreal site.

### Day 3 AT SEA

During your journey at sea, make the most of the many services and activities on board. Treat yourself to a moment of relaxation in the spa or stay in shape in the fitness centre. Depending on the season, let yourself be tempted by the swimming pool or a spot of sunbathing. This journey without a port of call will also be an opportunity to enjoy the conferences or shows proposed on board, depending on the activities offered, or to do some shopping in the boutique or to meet the PONANT photographers in their dedicated space. As for lovers of the open sea, they will be able to visit the ship's upper deck to admire the spectacle of the waves and perhaps be lucky enough to observe marine species. A truly enchanted interlude, combining comfort, rest and entertainment.

### Day 4 SEMARANG

Semarang enjoys a strategic location on the northern coast of Java, making it a cosmopolitan port town and a melting pot of Chinese, Indo-Arabic and European cultures. Before setting off to explore the region's treasures, take a tour of the old town and its smattering of old colonial buildings. Here in Indonesia's most Chinese town, don't miss a trip to the Chinatown district. If it's culture you're after, journey deeper into the green, rolling inland region, passing by volcanoes and rice paddies until you reach the royal town of Yogyakarta and one of its ancient kingdoms, the Borobudur : this Buddhist temple is a UNESCO World Heritage Site and one of the world's largest temples.

### Day 5 AT SEA

Wild Earth Travel

*Small Ships, Big Adventures*

**0800 945 3327** (within New Zealand) | +64 (0) 3 365 1355 | **1800 107 715** (within Australia)

info@wildearth-travel.com | wildearth-travel.com





# Wild Earth Travel

*Small Ships, Big Adventures*

**wildearth-travel.com**

**info@wildearth-travel.com**

During your journey at sea, make the most of the many services and activities on board. Treat yourself to a moment of relaxation in the spa or stay in shape in the fitness centre. Depending on the season, let yourself be tempted by the swimming pool or a spot of sunbathing. This journey without a port of call will also be an opportunity to enjoy the conferences or shows proposed on board, depending on the activities offered, or to do some shopping in the boutique or to meet the PONANT photographers in their dedicated space. As for lovers of the open sea, they will be able to visit the ship's upper deck to admire the spectacle of the waves and perhaps be lucky enough to observe marine species. A truly enchanted interlude, combining comfort, rest and entertainment.

## Day 6 UJUNG KULON NATIONAL PARK, JAVA

Situated at the westernmost tip of Java, Ujung Kulon National Park includes the eponymous peninsula and the Krakatoa volcano nature reserve. A natural sanctuary for Asian wildlife, the park is home to numerous species of wild animals, including the last known population of Javan rhinoceroses, estimated at some sixty individuals. You will be enraptured by the exceptional beauty of this place, its forests, its jagged coastline and its islands.

## Day 7 SAILING ALONG KRAKATOA

Krakatoa, or Krakatau, is a name familiar to most, though few know where it is located. Lying in the Sunda Strait, between Java and Sumatra on the Pacific ring of fire, is the site of the largest volcanic eruption in modern history. The 1883 eruptions culminated with a colossal blast that literally blew Krakatau apart. The noise was heard over 4,600 km away. Eruptions since 1927 have built a new cone known as Anak Krakatau ("The child of Krakatau") that is still active, with its most recent eruptive episode having begun in 1994. Quiet periods of a few days alternate with spectacular Strombolian eruptions. Guest activities will be determined by the level of volcanic activity on the day and may involve ship based viewing or zodiac tour.

## Day 8 BENGKULU, SUMATRA

The British East India Company founded Bengkulu in 1685 as their new commercial centre for trade, after the Dutch expelled them from Java. In 1714,

the British built Fort Marlborough to protect their trading establishment. However, the trading centre was never financially viable because of its remoteness and the difficulty in procuring pepper. Despite these difficulties, the British persisted, maintaining a presence there for over a century, eventually ceding it to the Dutch as part of the Anglo-Dutch Treaty of 1824. Like the rest of present-day Indonesia, Bengkulu remained a Dutch colony until World War II. Today guests will have the opportunity to undertake a guided tour by bus of the city of Bengkulu including a visit to Fort Marlborough.

## Day 9 MENTAWAI ISLANDS, SUMATRA

With their long sandy beaches lined with coconut trees, their old-growth forest home to several endemic species of primates, and their hunter-gatherer tribes living in harmony with nature, the Mentawai Islands are one of Indonesia's most authentic destinations. And despite seeing an influx of wave riders for some time now due to the heavenly surfing conditions, this archipelago remains one of Indonesia's most unspoiled.

## Day 10 PULAU NIAS, GREATER SUNDA ISLANDS

The geographic isolation of the Nias islands have resulted in a unique megalithic culture. One of the most unique cultural traditions still in practice is Stone Jumping, a manhood ritual that sees young men leaping over two-meter stone towers in a rite of passage. The higher they jump; the better chance they have of acquiring a wife. The tradition was originally designed to train the young men for warfare and defence. In addition, the traditional music of Nias, performed mostly by women, is noted worldwide for its haunting beauty. Today you will have the opportunity to visit a traditional village and witness unique cultural performances that serve as the primary form of spiritual expression.

## Day 11 BANYAK ISLANDS

With their palm trees, beaches of fine, immaculate white sand, and crystal-clear sea, the tropical Banyak Islands are the stuff of dreams. This archipelago of 99 islands -- most of them uninhabited -- is especially popular with surfers and is attracting a growing number of travellers seeking an earthly paradise. The Banyak Islands are also home to Sumatra's top snorkelling spots, featuring stunning underwater forests of colourful coral.

## Day 12 BANDA ACEH, SUMATRA

Wild Earth Travel

*Small Ships, Big Adventures*

**0800 945 3327** (within New Zealand) | +64 (0) 3 365 1355 | **1800 107 715** (within Australia)

info@wildearth-travel.com | **wildearth-travel.com**



# Wild Earth Travel

*Small Ships, Big Adventures*

**wildearth-travel.com**

**info@wildearth-travel.com**

Banda Aceh is the capital and largest city in the province of Aceh, Indonesia, located on the north-western tip of Sumatra. On 26 December 2004, the city was hit by a tsunami caused by a 9.2 magnitude earthquake in the Indian Ocean. The disaster killed 167,000 inhabitants, injured countless others and destroyed more than 60% of the city's buildings. With the assistance of domestic and international aid an enormous effort has been made to rebuild since that fateful day. Join your expedition team and local guides for a bus tour visiting the Tsunami Museum, memorial and educational centre along with other historical and cultural landmarks including the Baiturrahman Mosque, one of the city's dominant landmarks.

## Day 13 AT SEA

During your journey at sea, make the most of the many services and activities on board. Treat yourself to a moment of relaxation in the spa or stay in shape in the fitness centre. Depending on the season, let yourself be tempted by the swimming pool or a spot of sunbathing. This journey without a port of call will also be an opportunity to enjoy the conferences or shows proposed on board, depending on the activities offered, or to do some shopping in the boutique or to meet the PONANT photographers in their dedicated space. As for lovers of the open sea, they will be able to visit the ship's upper deck to admire the spectacle of the waves and perhaps be lucky enough to observe marine species. A truly enchanted interlude, combining comfort, rest and entertainment.

## Day 14 MALACCA

Lying along the shores of the eponymous Strait, Malacca City has been listed as a UNESCO World Heritage Site. A witness of the maritime traffic between Asia and the West, the city is inextricably linked to the trade of spices and silk. This cultural oasis will show you the history of a fascinating ancient civilisation, the Baba Nyonya, the descendants of Chinese immigrants who married Malay women. In a Peranakan house in Chinatown, you will discover the Baba Nyonya Heritage Museum, which reproduces the interior of a traditional elegant home from the 19th century. The Baba Nyonya were wealthy traders who liked to indulge their taste for sumptuous furniture made from teak and mother-of-pearl, rare jewels and silk brocade.

## Day 15 SINGAPORE

Nicknamed the Garden City, Singapore stretches across Malaysia's southern-most region. Experience the vibrant hustle and bustle of this city-state for yourself at the Marina Bay. No too far away is the historic centre, offering up a unique smorgasbord of neoclassical buildings and contemporary towers. Decked out in topiary, the pavements of Orchard Road are also home to countless shopping centres. The colourful markets in Chinatown and Little India are the perfect opportunity to quell hunger pangs in a hawker centre, one of the city's traditional snack bars. Between the two districts, get a slice of history with a trip to the Raffles dock. It was here that Englishman Sir Raffles, the founder of the city, is said to have arrived one fateful day in January 1819.

## Please Note:

Itineraries are subject to change.

Wild Earth Travel

*Small Ships, Big Adventures*

**0800 945 3327** (within New Zealand) | +64 (0) 3 365 1355 | **1800 107 715** (within Australia)

info@wildearth-travel.com | wildearth-travel.com





# Wild Earth Travel

*Small Ships, Big Adventures*

**wildearth-travel.com**

**info@wildearth-travel.com**

## YOUR SHIP: LE JACQUES CARTIER

**YOUR SHIP:** Le Jacques Cartier

**VESSEL TYPE:** Luxury

**LENGTH:**

**PASSENGER CAPACITY:** 92 cabins

**BUILT/REFURBISHED:** 2018/2019

Featuring innovative and environmentally-friendly equipment, elegantly designed staterooms, spacious suites with large windows, and lounge areas that open onto the outside, this new limited-capacity yacht boasting just 92 staterooms and suites will offer you a truly unique cruising experience.

As the sixth ship in a new series that remains true to the Ponant spirit, Le Jacques Cartier will embody the unique atmosphere that is the cruise line's hallmark: a subtle blend of refinement, intimacy and comfort.

Aboard this ship that flies the French flag, you will experience the incomparable pleasure of an intimate cruise, with the possibility of exploring an ever-increasing range of destinations in an ethnic-chic ambiance with luxury service.

Experience a luxurious setting where the accent is on authenticity and passion for travel.

### RESTAURANTS

As it is an essential part of French culture, gastronomy will naturally have pride of place aboard this new ship.

To the back of Deck 4, you will find a 260 m<sup>2</sup> panoramic restaurant which can accommodate all of our passengers in a single sitting. Designed differently to that on our other ships, this

dining area, which opens onto the outside, will have a buffet of salads, desserts and cheeses at your disposal. Our discreet and attentive crew will provide table service for hot meals.

In a relaxed atmosphere, an outdoor grill on Deck 3 will serve grilled meats with a variety of salads and desserts.

### PUBLIC AREAS

Le Jacques Cartier has many common areas that are designed and equipped to meet all of your needs while preserving the intimacy of each passenger.

A 140 m<sup>2</sup> reception area includes:

A reception/concierge desk,

An excursions desk,

The ship's administrative services,

The sales office, manned by our Guest Relations Officer,

Our 50 m<sup>2</sup> boutique which sells clothing, jewellery, beauty products, postcards and various accessories,

Toilets accessible to passengers with reduced mobility.

A new hydraulic platform with adjustable height provides:

Easier boarding than on any other cruise ship,

Easier Zodiac embarkation and disembarkation for expeditions,

Easier access to the sea for swimming and practising various water sports such as kayaking or paddle-boarding.

A pool deck offering:

A pool with a panoramic view, equipped with a counter-current swimming system,

A pleasant solarium,

An outdoor bar and lounge with armchairs and sofas.

A 200 m<sup>2</sup> main lounge which can accommodate all of our passengers to share convivial moments and to host activities

Wild Earth Travel

*Small Ships, Big Adventures*

**0800 945 3327** (within New Zealand) | +64 (0) 3 365 1355 | **1800 107 715** (within Australia)

info@wildearth-travel.com | wildearth-travel.com

# Wild Earth Travel

*Small Ships, Big Adventures*

**wildearth-travel.com**

**info@wildearth-travel.com**

organised during the day or evening.

Lastly, a theatre that seats 188, equipped with:

The latest sound and lighting technology,

A LED wall as the stage backdrop, for the projection of high-resolution images and videos.



and videos.

**Wild Earth Travel**

*Small Ships, Big Adventures*

**0800 945 3327** (within New Zealand) | +64 (0) 3 365 1355 | **1800 107 715** (within Australia)

info@wildearth-travel.com | **wildearth-travel.com**

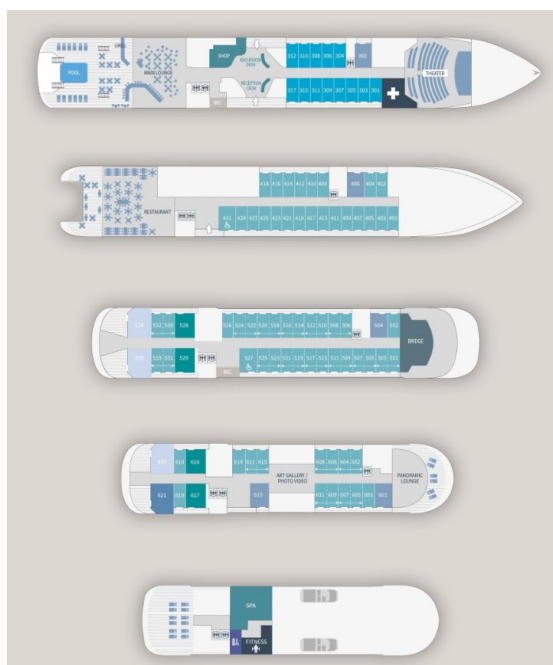
# Wild Earth Travel

*Small Ships, Big Adventures*

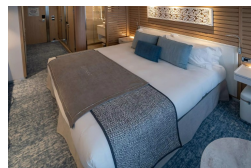
[wildearth-travel.com](http://wildearth-travel.com)

[info@wildearth-travel.com](mailto:info@wildearth-travel.com)

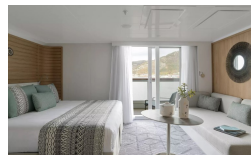
## INSIDE YOUR SHIP



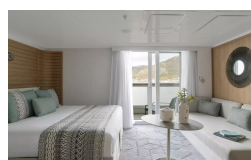
### DELUXE STATEROOM



Deluxe Suite Deck 4



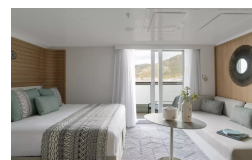
Deluxe Suite Deck 6



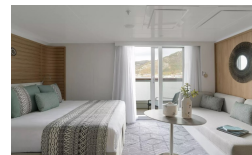
Grand Deluxe Suite Deck 6



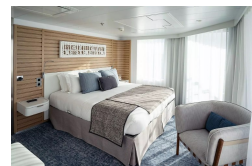
### DELUXE SUITE



Deluxe Suite Deck 5



GRAND DELUXE SUITE



OWNER'S SUITE



Wild Earth Travel

*Small Ships, Big Adventures*

0800 945 3327 (within New Zealand) | +64 (0) 3 365 1355 | 1800 107 715 (within Australia)

[info@wildearth-travel.com](mailto:info@wildearth-travel.com) | [wildearth-travel.com](http://wildearth-travel.com)





# Wild Earth Travel

*Small Ships, Big Adventures*

**wildearth-travel.com**

**info@wildearth-travel.com**

## PRICING

07-Jan-2026 to 21-Jan-2026

|                           |              |
|---------------------------|--------------|
| DELUXE STATEROOM          | 18450 AUD pp |
| PRESTIGE STATEROOM DECK 4 | 19420 AUD pp |
| PRESTIGE STATEROOM DECK 5 | 20000 AUD pp |
| PRESTIGE STATEROOM DECK 6 | 20780 AUD pp |
| Deluxe Suite Deck 4       | 28000 AUD pp |
| Deluxe Suite Deck 5       | 28000 AUD pp |
| Deluxe Suite Deck 6       | 28000 AUD pp |
| DELUXE SUITE              | 28000 AUD pp |
| PRESTIGE SUITE DECK 5     | 30140 AUD pp |
| PRESTIGE SUITE DECK 6     | 31120 AUD pp |
| Privilege Suite Deck 6    | 31900 AUD pp |
| PRIVILEGE SUITE           | 31900 AUD pp |
| GRAND DELUXE SUITE        | 32880 AUD pp |
| Grand Deluxe Suite Deck 6 | 32880 AUD pp |
| OWNER'S SUITE             | 33840 AUD pp |

### ADDITIONAL CHARGES:

Port Taxes and Fees 1040 AUD pp



Wild Earth Travel  
*Small Ships, Big Adventures*

**0800 945 3327** (within New Zealand) | +64 (0) 3 365 1355 | **1800 107 715** (within Australia)

info@wildearth-travel.com | wildearth-travel.com





# Wild Earth Travel

*Small Ships, Big Adventures*

**wildearth-travel.com**

**info@wildearth-travel.com**

## SPECIAL OFFERS

Online prices reflect the current brochure fare savings of up to 30%. Prices may change based on demand. Terms and conditions apply. This special offer is subject to availability. Please contact us for more details.

Wild Earth Travel

*Small Ships, Big Adventures*

**0800 945 3327** (within New Zealand) | +64 (0) 3 365 1355 | **1800 107 715** (within Australia)

info@wildearth-travel.com | **wildearth-travel.com**