

Wild Earth Travel

Small Ships, Big Adventures

wildearth-travel.com

info@wildearth-travel.com

ISLANDS OF CAPE VERDE ARCHIPELAGO - SMALL SHIP CRUISE

Explore the archipelago of Cape Verde with its intoxicating mixture of African and Portuguese heritage and its welcoming locals. Once a former colony and slave trade outpost, the Cape Verde Islands of today offer a spellbinding blend of African and Portuguese influences in their architecture, food, customs and traditions. Being blessed with a pleasant year-round climate, the archipelago offers a diverse range of landscapes from verdant mountain ranges, lush hills and jungles to explore, to volcanic landscapes or wide deserted beaches. This cruise holiday will open up for you a vibrant and colorful world, all set to the gentle rhythms of West African music.



ITINERARY

DAY 1 Palmeira, Sal

Embarkation at 4 pm at the port of Palmeira, Sal. Dinner on board and departure at midnight towards Boavista. Overnight at sea.

DAY 2 Sal Rei, Boa Vista

Early morning arrival at Sal Rei, Boa Vista. Boavista offers the most beautiful beaches of the archipelago, and amazing landscapes, both on its coasts and in the heart of the island. Relax on the beach or enjoy an all-day optional excursion to discover the most authentic aspects of the island: its villages with colorful facades, its artisans of ceramics, and its agriculture. Lunch at a local restaurant, before we return on board to sail towards Santiago island. Overnight at sea.

Wild Earth Travel

Small Ships, Big Adventures

0800 945 3327 (within New Zealand) | +64 (0) 3 365 1355 | **1800 107 715** (within Australia)

info@wildearth-travel.com | **wildearth-travel.com**



Wild Earth Travel

Small Ships, Big Adventures

wildearth-travel.com

info@wildearth-travel.com

DAY 3 Praia, Santiago

Early morning arrival at Praia, Santiago, the largest of the islands of the archipelago. After a morning at leisure and lunch on board, the optional afternoon excursion will bring us to Cidade Velha, the first colonial city built in the tropics and classified by Unesco. The fort and the nearby settlements were once a thriving slave trade centre. Late in the evening we will sail north towards Fogo, the island of fire. Overnight at sea.

DAY 4 Sao Felipe, Fogo

Early morning arrival Fogo, with its dominating sight of the Fogo Volcano which rises 3,000 meters over the sea level. Our optional full day excursion will bring us at the top of the volcano, right at the crater edge. You will walk through a landscape of lava. Lunch will be at the crater's village. We will also visit the city San Felipe with a characteristic colonial charm. Late in the evening we will sail to Sao Vicente. Overnight at sea.

DAY 5 Mindelo, Sao Vicente

Once a vibrant commercial island, it has evolved into a cultural center and Mindelo is one of the most well preserved colonial cities in Cape Verde. Our optional walking excursion will allow you to visit galleries and discover busy restaurants, musical events that give Mindelo its label of the Cultural Center of the Cape Verde. It is no surprise that the National Museum of Handicrafts is located in Mindelo. Overnight in port.

DAY 6 Mindelo, Sao Vicente – Porto Novo Santo Antao

Early in the morning depart for a short sail towards the island of Santo Antao, the greenest of all Cape Verde Islands with landscapes of verdant plantations of sugarcane alternate old craters. Our optional full day excursion will include the luxuriant Valley Paul where sugarcane is still exploited and where you will taste the "grogue" the national drink of the Archipelago. You will also reach the Valley of Ribeira das Patas and discover rock formations coming from lava formations. Dinner on board and overnight in port.

DAY 7 Porto Novo Santo Antao

This morning, enjoy an optional half day excursion to discover the south-western part of the island a safari through volcanic landscapes, porcelain field, and isolated villages with dropwise agriculture and different kind of plantations. This is a beautiful experience through villages like Lagedos with an ecological tourism to explore the dry volcanic face of this extraordinary island. Return on board to depart towards Sal. Overnight at sea.

DAY 8 Palmeira, Sal

Early morning arrival at Palmeira port, Sal. Disembarkation at 9:00 am after breakfast.

Please Note:

Itineraries can be changed at the discretion of Variety Cruises and of the Vessel's Captain in case of adverse weather conditions - winds of 6/7 Beaufort or more depending on the vessel- on port authorities not allowing a vessel to leave port or in case of other extraordinary conditions. Such itinerary changes do not automatically entitle passengers to any refunds, but Variety Cruises guarantees that passengers are disembarked at the advertised port of disembarkation on time for their flights.

Wild Earth Travel

Small Ships, Big Adventures

0800 945 3327 (within New Zealand) | +64 (0) 3 365 1355 | **1800 107 715** (within Australia)

info@wildearth-travel.com | **wildearth-travel.com**



Wild Earth Travel

Small Ships, Big Adventures

wildearth-travel.com

info@wildearth-travel.com

YOUR SHIP: HARMONY V

| | |
|----------------------------|--------------------|
| YOUR SHIP: | Harmony V |
| VESSEL TYPE: | Motor Yacht |
| LENGTH: | 55 metres |
| PASSENGER CAPACITY: | 49 |
| BUILT/REFURBISHED: | 2009 |

Imagine a place far from home that feels just like home, where the borders are delineated by the golden shores of the sea; and home is wherever the anchors drop. Imagine 179 feet of comfort, beauty, and safety classified by the latest International "Safety of Life at Sea" (SOLAS) standards. Imagine your floating home on board the sleek, contemporary state of the art Mega Yacht that sails the seas under the name HARMONY V, waving her Greek flag through the wind. Discover the world by sea at 10 knots per hour, in her un-rushed pace, one island or seashore at a time. Harmony V loves to seduce her select 49 guests with her sleek lines and ample deck space redefining what yachting was meant to be. A spacious lounge with ample space, dining areas decorated with warm colors, large windows offering pristine views of all destinations, shaded areas and outdoor bar and loungers are just some of the elements that define her essence. 360° views of unobstructed ocean are your eyes' canvas painted with ocean blue and deep green mountains. Mingle with likeminded travelers in our public areas, enjoy a moment to yourself in our ample deck space, or retreat to your cabin-sanctuary all offering windows or portholes connecting you with Mother Nature's wonders. Harmony V's experienced

crew of 18 is trained with hospitality at heart to pamper her guests and guarantee the ultimate home away from home experience.

Home at Sea Single seating dining Indoor & Outdoor Lounge - Bar, Indoor & Outdoor Restaurant, Audiovisual in Lounge, Mini library, Beach Towels, Snorkeling equipment, Kayak, Board Games, Swimming Platform, Wi-Fi

Comfort Zone Windows: upper & main deck cabins, Triple Occupancy cabins: Category A, Flat-Screen TV, Mini Safe, Mini Fridge, CD & DVD player, En suite bathroom with shower, Individually controlled A/C, Hairdryers, Telephone for internal use, Central music



entral music

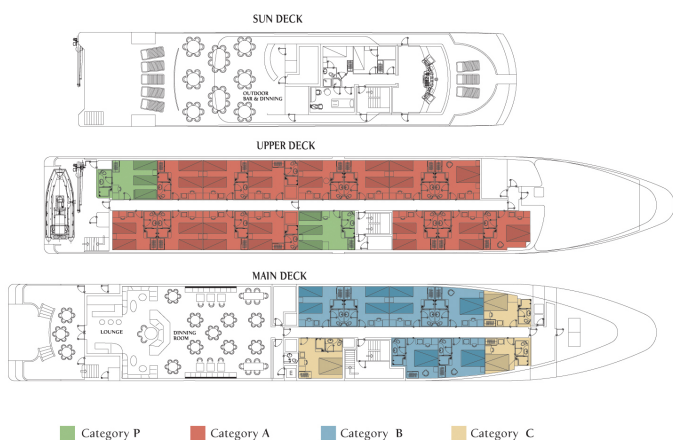
Wild Earth Travel

Small Ships, Big Adventures

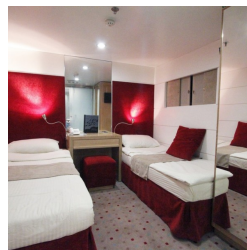
0800 945 3327 (within New Zealand) | +64 (0) 3 365 1355 | **1800 107 715** (within Australia)

info@wildearth-travel.com | **wildearth-travel.com**

INSIDE YOUR SHIP



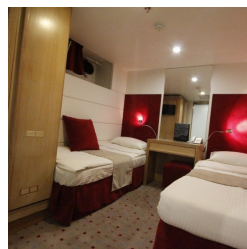
Category A



Category B



Category C



Category P



Wild Earth Travel

Small Ships, Big Adventures

wildearth-travel.com

info@wildearth-travel.com

PRICING

22-Nov-2025 to 29-Nov-2025

| | |
|------------|-------------|
| Category C | 2650 EUR pp |
| Category B | 3400 EUR pp |
| Category A | 3850 EUR pp |
| Category P | 4500 EUR pp |

29-Nov-2025 to 06-Dec-2025

| | |
|------------|-------------|
| Category C | 2550 EUR pp |
| Category B | 3250 EUR pp |
| Category A | 3670 EUR pp |
| Category P | 4430 EUR pp |

06-Dec-2025 to 13-Dec-2025

| | |
|------------|-------------|
| Category C | 2550 EUR pp |
| Category B | 3250 EUR pp |
| Category A | 3670 EUR pp |
| Category P | 4430 EUR pp |

13-Dec-2025 to 20-Dec-2025

| | |
|------------|-------------|
| Category C | 2550 EUR pp |
| Category B | 3250 EUR pp |
| Category A | 3670 EUR pp |
| Category P | 4430 EUR pp |

20-Dec-2025 to 27-Dec-2025

| | |
|------------|-------------|
| Category C | 2650 EUR pp |
| Category B | 3400 EUR pp |
| Category A | 3850 EUR pp |
| Category P | 4500 EUR pp |

27-Dec-2025 to 03-Jan-2026

| | |
|------------|-------------|
| Category C | 2650 EUR pp |
| Category B | 3400 EUR pp |
| Category A | 3850 EUR pp |
| Category P | 4500 EUR pp |

25-Feb-2026 to 04-Mar-2026

| | |
|------------|-------------|
| Category C | 2650 EUR pp |
| Category B | 3400 EUR pp |
| Category A | 3850 EUR pp |
| Category P | 4500 EUR pp |

ADDITIONAL CHARGES:

Port Taxes & Fees 410 EUR pp