

Wild Earth Travel

Small Ships, Big Adventures

wildearth-travel.com

info@wildearth-travel.com

ISLANDS AND CITIES, FROM THE NORTH SEA TO THE BALTIC

Explore the shores of the North Sea and the Baltic Sea, discovering emblematic towns and islands in Sweden, Denmark, Poland, Estonia and Finland. The Viking past of Aalborg, the peaceful canals of Copenhagen, the medieval ramparts of Visby, the colourful little streets of Stockholm, the shipyards of Gdansk, the Hanseatic houses of Tallinn, and so on. In this journey combining history, culture and nature, each port of call forms part of a fascinating mosaic, revealing architectural treasures, living traditions and unique heritage. A Nordic interlude, where the gentle way of life encounters passionate cultural discoveries, offering a rich and contrasted panorama of the treasures of Northern Europe.



ITINERARY

Day 1 Fredrikstad

Nestling on the shores of the Glomma estuary, Fredrikstad captivates with its rich historical heritage, picturesque canals and warm atmosphere. Founded in 1567, the fortified old town still has traces of its rich past. Fall under the spell of its cobbled narrow streets, edged with traditional old wooden buildings, boutiques and lively cafes, and also discover the extremely well-preserved ramparts, built almost 5 centuries ago. Nature enthusiasts will also appreciate the magnificent hiking paths along the Oslo fjord and surrounding islands, such as Hankø, with its idyllic beaches and lush plains.

Day 2 Aalborg

Wild Earth Travel

Small Ships, Big Adventures

0800 945 3327 (within New Zealand) | +64 (0) 3 365 1355 | **1800 107 715** (within Australia)

info@wildearth-travel.com | wildearth-travel.com

Wild Earth Travel

Small Ships, Big Adventures



wildearth-travel.com

info@wildearth-travel.com

In the very north of Denmark, on the banks of the Limfjorden sea, the Viking town of Aalborg opens its welcoming arms. A must-see is the Aalborg tower standing like a lighthouse in the middle of the town. At the top, a magnificent view of the surroundings awaits your visit. Several museums, including the Utzon Centre, propose a sample of local artistic creation. As far as shopping goes, the famous Jomfru Ane Gade street and its district, include some of the most beautiful Danish fashion boutiques as well as numerous restaurants and cafes where you might try one of the country's specialities such as "platte"

Day 3 Copenhagen

Connected to the far eastern side of Sealand island, a few kilometres away from the Swedish coasts, Copenhagen offers you the high colour of Scandinavian capitals. You can discover the city's riches that weaves through the canal networks through the historical districts of Christiansborg and Nyhavn. Many palaces provide an aperçu of Danish history. For eating, you can try out the smørrebrød, traditional danish sandwiches made with ham, cheese or smoked fish.

Day 4 Gudhjem, Bornholm

Lying in the south-west of the Baltic Sea, the medieval village of Gudhjem, on the island of Bornholm, is one of the most visited and most popular villages in Denmark. As you stroll along its picturesque streets, you will fall under the spell of its varied landscapes, its easy way of life, and the authenticity of this charming town with half-timbered houses topped with red roofs, in the Danish tradition. It is here, along these charming streets, that the first herring smokehouses were built in the mid-19th century, attracting all the region's fishermen. Tucked away in a gorgeous natural setting composed of rocky cliffs, dense forests and beaches of white sand, Gudhjem will provide an unforgettable interlude where time will seem to stand still.

In the very heart of the Baltic Sea, in the Erholmene archipelago, the small island of Christiansø - less than 0,5 km² (barely 0,3 square miles) - awaits you. Thanks to its geographic form, which constitutes a natural harbour with the island of Frederiksbø, it has been used as such for more than a thousand years. Pirates and fishermen succeeded one another here before the construction of its fortress, built between the 17th and 18th centuries, in the time of the Danish-Swedish wars. Visiting Christiansø, you see the shaping of

great history, the re-emergence of the rivalries and alliances that took place in the Baltic Sea. Today, this peaceful island offers you wild and preserved nature. A natural reserve since 1926, it is home in particular to a very large population of nesting and migrating birds that find food and tranquillity here.

Day 5 Gdansk

This ravishing city on the Baltic sea is nicknamed "the golden door of Poland", and you'll understand why when you see its beautiful Hanseatic architecture. You'll be charmed by the mouldings and gables that enhance the colourful façades of the houses. Along the Vistula Quays, you can take a pleasant stroll among the crafts shops. In elegant Mariacka street, the amber jewellers will most certainly tempt you into their boutiques. You can visit the church of Saint-Mary and its astronomic clock. Not far, the majestic Long Market square offers the famous Artus Court and the rich Gdansk History Museum.

Day 6 Visby, Gotland

This old Hanseatic city lies to the west coast of Gotland, a Swedish island in the Baltic sea. Pass through the spectacular Visby fortifications and visit the old town, a UNESCO World Heritage site. You'll discover the grand Visby homes of rich merchants as well as the lovely low wooden houses in the little cobbled streets. Don't miss Saint Mary's cathedral with its octagonal steeples, as well as Powder tower along the fortifications. Make sure you stop over in one of the rose-adorned cafes; indeed roses abound in this town where you can taste one of the island's specialities, namely saffron pancakes with red fruit.

Days 7 - 8 Stockholm

The capital of Sweden occupies an archipelago in the east of the country at the junction of Malar Lake and the Baltic sea. In Gamla stan, meaning "old town" in Swedish, you can stroll at your leisure in picturesque medieval streets until you reach the majestic Royal Palace. On the green island of Djurgården, you can visit several very different kinds of cultural centres: the Vasa museum is dedicated to a 17th century three-mast, the ecomuseum of Skansen presents traditional customs, and the ABBA museum is dedicated to the legendary pop group. For a fantastic, all-encompassing view of Stockholm, you can take a ride in SkyView, a glass-encased sphere gondola that takes you to the top of the world's largest building, the Ericsson Globe, a Stockholm landmark.

Wild Earth Travel

Small Ships, Big Adventures

0800 945 3327 (within New Zealand) | +64 (0) 3 365 1355 | **1800 107 715** (within Australia)

info@wildearth-travel.com | **wildearth-travel.com**

Wild Earth Travel

Small Ships, Big Adventures

wildearth-travel.com

info@wildearth-travel.com

Day 9 Saaremaa

Welcome to Estonia's largest island, Saaremaa, with its age-old history and mysterious charm. Located in the Baltic Sea, it closes off the Gulf of Riga. The episcopal castle, a medieval fortress and preserved witness of the rich history of the Baltic States, stands proudly in the island's capital, Kuressaare. The island's soils and mild climate give it abundant and diverse nature, where forests, cliffs, dunes and beaches flourish, becoming a haven for thousands of migratory birds every year. The island offers many treasures, between wild nature, nature reserves, meteor craters and windmills.

Day 10 Tallinn

Opening onto the Baltic sea, to the far north of Estonia, the town of Tallin will win you over with the picturesque charm of its architecture. You can meander through its little streets in the heart of the medieval centre where its gothic town hall has been standing since 1404. The Kiek in de Kok tower, the Orthodox Alexander Nevski cathedral, or Toompea castle give visitors a taste of this town's rich past. The city was particularly active during the medieval period, as is demonstrated by the very beautiful monuments from this period that are still visible. Don't hesitate to lose yourself in the heart of Tallinn, listed as a UNESCO World Heritage Site.

Day 11 Helsinki

Seated in the southern peninsula of Finland, Helsinki offers the buzz of a cosmopolitan city that has opted for both elegance and beauty. Explore its historical centre where the soft hues of neoclassical buildings are juxtaposed with spectacular modern constructions. The bustling Kallio district is teeming with boutiques and restaurants where you can taste some local specialties like graavilohi - a sweet, marinated, aromatic salmon dish. Keskuspuiisto park, a stone's throw from the centre, is a good place to sit and unwind.

Please note:

Itineraries are subject to change.

Wild Earth Travel

Small Ships, Big Adventures

0800 945 3327 (within New Zealand) | +64 (0) 3 365 1355 | **1800 107 715** (within Australia)

info@wildearth-travel.com | **wildearth-travel.com**

Wild Earth Travel

Small Ships, Big Adventures

wildearth-travel.com

info@wildearth-travel.com

YOUR SHIP: LE CHAMPLAIN

| | |
|----------------------------|---------------------|
| YOUR SHIP: | Le Champlain |
| VESSEL TYPE: | Luxury |
| LENGTH: | 127 metres |
| PASSENGER CAPACITY: | 92 cabins |
| BUILT/REFURBISHED: | 2017/2018 |

Featuring innovative and environmentally-friendly equipment, elegantly designed cabins, spacious suites with large windows, and lounge areas that open onto the outside, this new limited-capacity yacht boasting just 92 cabins and suites will offer you a truly unique cruising experience.

As the first ship in a new series, Le Champlain will embody the unique atmosphere that is the cruise line's hallmark: a subtle blend of refinement, intimacy and comfort.

Aboard this ship that flies the French flag, you will experience the incomparable pleasure of an intimate cruise, with the possibility of exploring an ever-increasing range of destinations in an ethnic-chic ambiance with luxury service.

Experience a luxurious setting where the accent is on authenticity and passion for travel.

RESTAURANTS

As it is an essential part of French culture, gastronomy will naturally have pride of place aboard this new ship. Through its two restaurants, Le Champlain will invite you on a journey to elegance and epicureanism.

In a relaxed atmosphere, a first dining area located on Deck 3 and able to seat 70 will serve grilled meats daily, along with a

variety of salads and desserts.

To the back of Deck 4, you will find a 260 m² panoramic restaurant which can accommodate all of our passengers in a single sitting. Designed differently to that on our other ships, this dining area, which opens onto the outside, will have a buffet of salads, desserts and cheeses at your disposal. Our discreet and attentive crew will provide table service for hot meals.

PUBLIC AREAS

Like Le Boreal and its sisterships, Le Champlain has many common areas that are designed and equipped to meet all of your needs while preserving the intimacy of each passenger.

A 140 m² reception area includes: A reception/concierge desk, An excursions desk, The ship's administrative services, The sales office, manned by our Guest Relations Officer, Our 50 m² boutique which sells clothing, jewellery, beauty products, postcards and various accessories, Toilets accessible to passengers with reduced mobility.

A new hydraulic platform with adjustable height provides: Easier boarding than on any other cruise ship, Easier Zodiac embarkation and disembarkation for expeditions, Easier access to the sea for swimming and practising various water sports such as kayaking or paddle-boarding.

A pool deck offering: A pool with a panoramic view, equipped with a counter-current swimming system, A pleasant solarium, An outdoor bar and lounge with armchairs and sofas.

A 200 m² main lounge which can accommodate all of our passengers to share convivial moments and to host activities organised during the day or evening.

Lastly, a theatre that seats 188, equipped with: The latest

Wild Earth Travel

Small Ships, Big Adventures

0800 945 3327 (within New Zealand) | +64 (0) 3 365 1355 | **1800 107 715** (within Australia)

info@wildearth-travel.com | wildearth-travel.com

Wild Earth Travel

Small Ships, Big Adventures



wildearth-travel.com

info@wildearth-travel.com

sound and lighting technology, A LED wall as the stage backdrop, for the projection of high-resolution images and videos.



and videos.

Wild Earth Travel

Small Ships, Big Adventures

0800 945 3327 (within New Zealand) | +64 (0) 3 365 1355 | **1800 107 715** (within Australia)

info@wildearth-travel.com | **wildearth-travel.com**

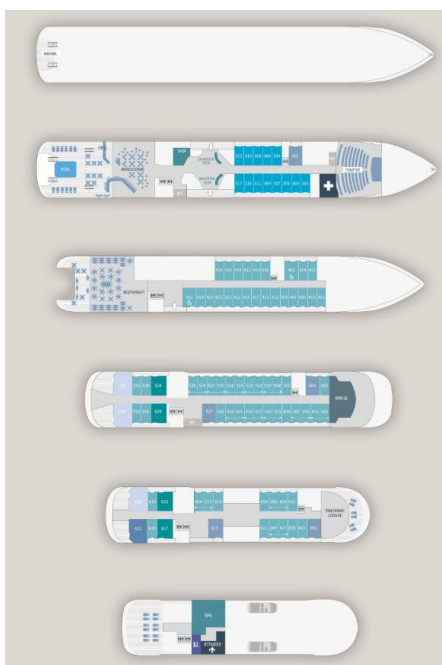
Wild Earth Travel

Small Ships, Big Adventures

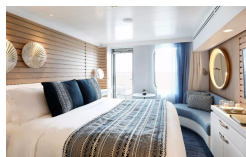
wildearth-travel.com

info@wildearth-travel.com

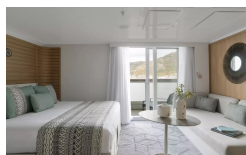
INSIDE YOUR SHIP



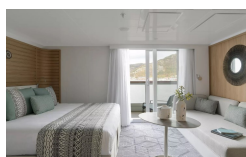
Deluxe Stateroom



Deluxe Suite Deck 4



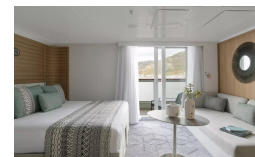
Deluxe Suite Deck 6



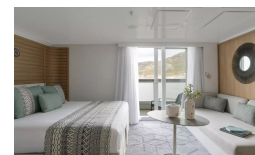
Grand Deluxe Suite Deck 6



Deluxe Suite Deck 3



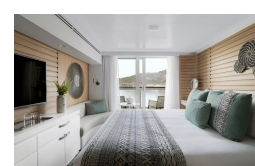
Deluxe Suite Deck 5



Grand Deluxe Suite Deck 5



Prestige Deck 4



Wild Earth Travel
Small Ships, Big Adventures

0800 945 3327 (within New Zealand) | +64 (0) 3 365 1355 | 1800 107 715 (within Australia)

info@wildearth-travel.com | wildearth-travel.com

Wild Earth Travel

Small Ships, Big Adventures

wildearth-travel.com

info@wildearth-travel.com

PRICING

06-Jul-2026 to 16-Jul-2026

| | |
|---------------------------|--------------|
| Deluxe Stateroom | 14540 AUD pp |
| Prestige Deck 4 | 16160 AUD pp |
| Prestige Deck 5 | 16970 AUD pp |
| Prestige Deck 6 | 17930 AUD pp |
| Deluxe Suite Deck 3 | 24990 AUD pp |
| Deluxe Suite Deck 6 | 24990 AUD pp |
| Deluxe Suite Deck 4 | 24990 AUD pp |
| Deluxe Suite Deck 5 | 24990 AUD pp |
| Prestige Deck 5 Suite | 33820 AUD pp |
| Prestige Deck 6 Suite | 35590 AUD pp |
| Privilege Suite Deck 5 | 37360 AUD pp |
| Privilege Suite Deck 6 | 37360 AUD pp |
| Grand Deluxe Suite Deck 6 | 41060 AUD pp |
| Grand Deluxe Suite Deck 5 | 41060 AUD pp |

| | |
|---------------------------|--------------|
| Deluxe Stateroom | 13340 AUD pp |
| Prestige Deck 4 | 14790 AUD pp |
| Prestige Deck 5 | 15520 AUD pp |
| Prestige Deck 6 | 16400 AUD pp |
| Deluxe Suite Deck 6 | 22830 AUD pp |
| Deluxe Suite Deck 5 | 22830 AUD pp |
| Deluxe Suite Deck 3 | 22830 AUD pp |
| Deluxe Suite Deck 4 | 22830 AUD pp |
| Prestige Deck 5 Suite | 30880 AUD pp |
| Prestige Deck 6 Suite | 32470 AUD pp |
| Privilege Suite Deck 5 | 34090 AUD pp |
| Privilege Suite Deck 6 | 34090 AUD pp |
| Grand Deluxe Suite Deck 6 | 37450 AUD pp |
| Grand Deluxe Suite Deck 5 | 37450 AUD pp |

26-Jul-2027 to 05-Aug-2027

Wild Earth Travel

Small Ships, Big Adventures

0800 945 3327 (within New Zealand) | +64 (0) 3 365 1355 | **1800 107 715** (within Australia)

info@wildearth-travel.com | wildearth-travel.com



Wild Earth Travel

Small Ships, Big Adventures



wildearth-travel.com

info@wildearth-travel.com

SPECIAL OFFERS

Online prices reflect the current brochure fare savings of up to 30%. Prices may change based on demand. Terms and conditions apply. This special offer is subject to availability. Please contact us for more details.



Wild Earth Travel

Small Ships, Big Adventures

0800 945 3327 (within New Zealand) | +64 (0) 3 365 1355 | **1800 107 715** (within Australia)

info@wildearth-travel.com | **wildearth-travel.com**