



# Wild Earth Travel

*Small Ships, Big Adventures*

**wildearth-travel.com**

**info@wildearth-travel.com**

## ISLAND WONDERS & THE SOUL OF ANCESTRAL JAPAN LUXURY CRUISE

From the island of Okinawa to the eastern coastline of the Seto Inland Sea, fall under the spell of an idyllic and ancestral Japan. During a brand-new 13-day cruise aboard Le Jacques Cartier, PONANT invites you to discover an enchanted side of Japan, combining preserved nature and ancestral heritage, at the intersection of Western and Japanese traditions.

From Naha, Le Jacques Cartier will sail towards some of Japan's best-preserved subtropical pearls. In the coral islands of Zamami and Kikaijima, enjoy the unspoiled beauty of these natural sanctuaries, renowned for their captivating marine biodiversity. You will then arrive at the mountainous island of Yakushima, a UNESCO World Heritage Site. Providing an unspoiled natural setting for endemic species such as the Yakushima monkey and deer, the island is home to an exceptional natural environment featuring forests of ancient cedars, bewitching waterfalls, and majestic peaks.

Your trip will continue in the Koshikijima Islands. Admire the raw and authentic beauty composed of monumental cliffs and huge rock formations dating back to the Cretaceous period nearly 80 million years ago. You will be captivated by these landscapes unlike any other.

Between the Yatsushiro and Ariake seas, off the coast of Nagasaki, succumb to the charms of the island region of Amakusa, once the refuge of Christians fleeing the ban on Catholicism in the 17th century during the Edo period. Further north, between South Korea and Fukuoka Prefecture, in the

Tsushima Strait, a little-known island called Iki will reveal itself to you in a glorious setting of rock faces with verdant summits and heavenly beaches of fine sand. Considered one of the cradles of Shinto, the island boasts no fewer than 150 shrines scattered across these sacred and unspoiled lands.

Le Jacques Cartier will sail westward to the volcanic island of Jeju in South Korea. Dominated by the majestic silhouette of the Hallasan volcano, the country's tallest peak, this nature sanctuary reveals its most beautiful treasures: steep cliffs with emerald and ashen reflections, monumental waterfalls, bewitching virgin forests, long stretches of tea plantations, and more.

Next, set off to discover picturesque Shimonoseki, the westernmost town on the island of Honshu, opposite the Kanmon Straits. You are now entering the waters of the emblematic Seto Inland Sea. Here, discover preserved islands and picturesque towns, witnesses to the passage of the mid-18th-century Japanese merchants, who would travel the Kitamae maritime route every year. Shimokamagari and Mitarai are fishing villages imbued with a timeless atmosphere, while the "shrine island" of Miyajima is classed as one of Japan's three most scenic places thanks to its floating torii and Shinto temple. Onimichi will then reveal its many emblematic temples, including Senk-ji, Saikoku-ji, and J do-ji. You will then arrive in Tomonoura, known for its gentle way of life and its craggy landscapes, which inspired the artist Hayao Miyazaki for the animated film Ponyo.

Wild Earth Travel

*Small Ships, Big Adventures*

**0800 945 3327** (within New Zealand) | +64 (0) 3 365 1355 | **1800 107 715** (within Australia)

info@wildearth-travel.com | **wildearth-travel.com**

# Wild Earth Travel

*Small Ships, Big Adventures*

[wildearth-travel.com](http://wildearth-travel.com)

[info@wildearth-travel.com](mailto:info@wildearth-travel.com)

You disembark in Kobe, a charming harbour city nestling between sea and mountains in the heart of the Japanese archipelago.



archipelago.

## ITINERARY

### Day 1 - Naha, Okinawa

Capital of Okinawa Prefecture, the town of Naha is located on the south-west of the island. You will love its lively atmosphere, particularly along Kokusai Dori, otherwise known as 'international street'. The picturesque Makishi Public Market, nicknamed 'Naha's kitchen' offers a profusion of colourful fish, Okinawan foodstuffs and local spices and you can sample delicacies cooked on the spot.

### Day 2 - ZAMAMI

Zamami is an island in the Kerama archipelago, 40 km (25 miles) west of Okinawa Island in the China Sea. Visitors to this 16 km<sup>2</sup> (6 mi<sup>2</sup>) quasi-uninhabited isle are enchanted by the many untouched natural treasures they find here. You will discover a tranquil island with lush vegetation, lined with stunning white-sand bays bathing in the glimmering 'Kerama blue' waters around the archipelago. Zamami is also renowned for the beauty of its coral reefs, where multicoloured fish engage in an endless mesmerising ballet. The observation deck on Mount Takatsuki reveals stunning views of the Kerama Islands, granted national park status in 2014. With subtle shifting shades of azure above and all around, this island truly is paradise.

### Day 3 - Kikaijima

Located between continental Japan and the main island of Okinawa, Kikaijima is a small preserved coral island where nature unfurls in all its splendour. Amidst this abundance of plants, you will be enchanted by century-old trees, majestic banyan trees and sugar cane plantations, which produce a delicious brown sugar. This island, inhabited since the 10th century and located on the trade route between China and Japan, has a turbulent history. During your exploration, perhaps you will notice some ancient coral stone walls, like an echo of the ever-present ocean. Between the white sandy beaches and the limestone coastlines, you'll also be able to enjoy a snorkelling trip and delightful possibilities for swimming.

### Day 4 - Miyanoura, Yakushima

Yakushima is a striking island in the South of Japan, covered in forest and listed as a UNESCO World Heritage Site. Hikers are very fond of this destination because of the lush vegetation, Mount Miyanoura, the waterfalls and cascades. But without a doubt, the symbol of the island remains its many age-old cedar trees which is said to have inspired some of the scenes in the

Wild Earth Travel

*Small Ships, Big Adventures*

0800 945 3327 (within New Zealand) | +64 (0) 3 365 1355 | 1800 107 715 (within Australia)

[info@wildearth-travel.com](mailto:info@wildearth-travel.com) | [wildearth-travel.com](http://wildearth-travel.com)





# Wild Earth Travel

*Small Ships, Big Adventures*

**wildearth-travel.com**

**info@wildearth-travel.com**

animated film Princess Mononoke. On this island, you will also find wildlife including the Japanese macaque, the sika deer, and green sea turtles which lay their eggs on the magnificent sandy beaches here.

Considered one of the cradles of Shintoism, the island boasts no fewer than 150 shrines scattered across these sacred and unspoiled lands.

## Day 5 - Koshiki (Kashimacho Imuta)

Off the western coastlines of Kagoshima Prefecture, the rocky and green islets called the Koshikijima Islands rise like a mirage from the East China Sea. Aboard our Zodiac dinghies, you will reach the three islands that make up the archipelago: Kamikoshikishima, Nakakoshikishima and Shimokoshikishima. You will be captivated by the raw and authentic beauty of this environment, featuring monumental cliffs and huge rock formations that date back to the Cretaceous period nearly 80 million years. During hikes, you will be lucky enough to discover these unique and striking landscapes. An interlude where time may stand still.

## Day 8 - Jeju

Jeju is an island like no other. Anchored off the South Korean coastlines, this volcanic island will provide you with a natural spectacle of magical beauty. Dominated by the majestic silhouette of the Hallasan volcano, the country's tallest peak, this nature sanctuary with its thousand and one geological riches reveals its most beautiful treasures, with volcanic cones spread all over the island, steep cliffs with emerald and ashen reflections, monumental waterfalls, bewitching virgin forests, long stretches of tea plantations and lava tubes that are some of the longest in the world.

## Day 6 - Amakusa

Facing the mythical island of Kyushu, between the Yatsushiro and Ariake seas, the island region of Amakusa both surprises and captivates. Composed of some one hundred verdant islets surrounded by stunning seabeds, the Japanese archipelago was once a refuge for many Christians fleeing the ban on Catholicism in the 17th century during the Edo period. Christian heritage can be found in every village in the region. In Sakitsu, a charming fishing port, immerse yourself in this Christian heritage, particularly when you visit the emblematic church listed as a UNESCO World Heritage Site.

## Day 9 - At sea

During your journey at sea, make the most of the many services and activities on board. Treat yourself to a moment of relaxation in the spa or stay in shape in the fitness centre. Depending on the season, let yourself be tempted by the swimming pool or a spot of sunbathing. This journey without a port of call will also be an opportunity to enjoy the conferences or shows proposed on board, depending on the activities offered, or to do some shopping in the boutique or to meet the PONANT photographers in their dedicated space. As for lovers of the open sea, they will be able to visit the ship's upper deck to admire the spectacle of the waves and perhaps be lucky enough to observe marine species. A truly enchanted interlude, combining comfort, rest and entertainment.

## Day 7 - Iki Island

A lush islet between Fukuoka Bay and the captivating island of Tsushima, Iki is a real paradise on earth. Fall under the spell of this natural and mineral beauty composed of rock faces covered with a verdant coat, small heavenly beaches and granite cliffs in hues of ochre. In addition to showing you its exceptional environment, this timeless journey will take you to discover traditional Japan.

## Day 9 - Shimonoseki

On the western tip of the island of Honshu, between the Seas of Japan and Seto, Shimonoseki stands facing the Kanmon Straits. Often considered as a crossing point to reach the island of Kyushu or the Korean coastlines, this discreet but no less historic port town has a unique heritage, a result of 700

Wild Earth Travel

*Small Ships, Big Adventures*

**0800 945 3327** (within New Zealand) | +64 (0) 3 365 1355 | **1800 107 715** (within Australia)

info@wildearth-travel.com | **wildearth-travel.com**



# Wild Earth Travel

*Small Ships, Big Adventures*

**wildearth-travel.com**

**info@wildearth-travel.com**

years of samurai rule. In this city of modern appearance, which was the theatre of many battles and legendary duels, an irresistible essence of the past prevails. Enjoy strolling the alleyways of its emblematic traditional market, famous for its stands of fugu (pufferfish).

entrance is guarded by a magnificent vermilion "Torii". Considered to be one of the most beautiful sites in the Japanese islands, you will be transported by the unique character and the serenity of this sacred site.

## Day 10 - Shimokamagari

The island of Shimokamagari stretches into the heart of the Seto Inland Sea, off the coast of the town of Kure, in the Hiroshima prefecture. A historical city during the feudal period, the island was the theatre of major diplomatic missions for the future and the Empire's trade relationships, notably with repeated visits from mainly Korean, but also Chinese and Dutch, emissaries. Registered since 2017 on the UNESCO Memory of the World Programme, documentary heritage of these encounters is conserved in the Shotoen Garden, one of the emblems of this lush islet. A magnificent Japanese garden with perfectly kept grounds, interspersed with raked pebbles and surrounded with majestic trees, it is home to a Rantokaku Museum complex, consisting of four exhibition rooms tracing the island's naval history.

## Day 12 - Onomichi

Anchored on the northern shores of the Seto Inland Sea, in the Hiroshima prefecture, the historical city of Onomichi extends from the main island of Honshu to certain neighbouring islands, linked by the bridges of the Shimanami Kaido motorway. Before becoming this peaceful town with its charming, sloping little streets, Onomichi established itself in the 7th century as a nerve centre of the rice trade for the entire Japanese archipelago. Although its activity is diminished today, the port remains at the centre of the town's culture. Onomichi now stands out for its exceptional heritage. With good reason, since it can boast over twenty temples and shrines, saved from the bombing of the Second World War. Among them are Senk -ji, offering an outstanding panoramic view over the whole town, Saikoku-ji and its three-storied pagoda, and J do-ji and its emblematic eleven-faced statue of the goddess Guanyin.

## Day 10 - Mitarai

A charming fishing village nestling in the east of Osaki Shimojima Island, on the edge of the Seto Inland Sea, Mitarai is appreciated for its traditional charm and authentic character. A trip back in time to the Edo Period, where the hustle and bustle of modern cities is replaced by the gentle sound of fishing boats. Thanks to its 19th century wooden dwellings lining the small, narrow streets, its great causeway, its centuries-old sanctuaries and its gangi stairs, a stone structure giving on to the sea, the old town was classed as a Preservation District by the Japanese state in 1994.

## Day 13 - Tomonoura

Anchored to the south-eastern end of the Nunakama Peninsula, facing the calm and clear waters of the Seto Inland Sea, Tomonoura is a destination particularly appreciated for its authentic and old-fashioned atmosphere that gives it an incomparable charm. In the past used as a port where boats would moor while waiting for a favourable wind, the charming and picturesque village now serves to inspire many filmmakers and artists. With good reason, since its craggy landscapes, its cherry trees in blossom, its gentle way of life, its traditional wooden houses and its port, preserved since the Edo era, notably enabled the artist Hayao Miyazaki to make the animated film Ponyo.

## Day 11 - Miyajima Island

At the heart of the Inland Sea, Miyajima, the "island sanctuary" will reveal its treasures. In the background you will see the Shinto Grand Sanctuary, whose

## Day 14 - Kobe

Wild Earth Travel

*Small Ships, Big Adventures*

**0800 945 3327** (within New Zealand) | +64 (0) 3 365 1355 | **1800 107 715** (within Australia)

info@wildearth-travel.com | **wildearth-travel.com**



# Wild Earth Travel

*Small Ships, Big Adventures*

**wildearth-travel.com**

**info@wildearth-travel.com**

A coastal city on the main island of Honshu, Kobe is a vital Japanese port. You will be inspired by the authenticity, way of life and heritage of the capital of Hyogo Prefecture, which is bordered by the sea. Its beef is internationally renowned, but there is much more to the city's attractions than this delicate speciality. As soon as you arrive, you will be welcomed by the Kobe Port Tower, located, along with the Maritime Museum, in the much appreciated Meriken Park. The Mount Rokko National Park is a real island of greenery in the very heart of the vibrant city. Long frequented by Shinto monks, then popular with the expatriates who flocked to Kobe during the second half of the 19th century, it is one of the symbols of the city.

Please note:

Itineraries are subject to change.

Wild Earth Travel

*Small Ships, Big Adventures*

**0800 945 3327** (within New Zealand) | +64 (0) 3 365 1355 | **1800 107 715** (within Australia)

info@wildearth-travel.com | **wildearth-travel.com**





# Wild Earth Travel

*Small Ships, Big Adventures*

**wildearth-travel.com**

**info@wildearth-travel.com**

## YOUR SHIP: LE JACQUES CARTIER

**YOUR SHIP:** Le Jacques Cartier

**VESSEL TYPE:** Luxury

**LENGTH:**

**PASSENGER CAPACITY:** 92 cabins

**BUILT/REFURBISHED:** 2018/2019

Featuring innovative and environmentally-friendly equipment, elegantly designed staterooms, spacious suites with large windows, and lounge areas that open onto the outside, this new limited-capacity yacht boasting just 92 staterooms and suites will offer you a truly unique cruising experience.

As the sixth ship in a new series that remains true to the Ponant spirit, Le Jacques Cartier will embody the unique atmosphere that is the cruise line's hallmark: a subtle blend of refinement, intimacy and comfort.

Aboard this ship that flies the French flag, you will experience the incomparable pleasure of an intimate cruise, with the possibility of exploring an ever-increasing range of destinations in an ethnic-chic ambiance with luxury service.

Experience a luxurious setting where the accent is on authenticity and passion for travel.

### RESTAURANTS

As it is an essential part of French culture, gastronomy will naturally have pride of place aboard this new ship.

To the back of Deck 4, you will find a 260 m<sup>2</sup> panoramic restaurant which can accommodate all of our passengers in a single sitting. Designed differently to that on our other ships, this

dining area, which opens onto the outside, will have a buffet of salads, desserts and cheeses at your disposal. Our discreet and attentive crew will provide table service for hot meals.

In a relaxed atmosphere, an outdoor grill on Deck 3 will serve grilled meats with a variety of salads and desserts.

### PUBLIC AREAS

Le Jacques Cartier has many common areas that are designed and equipped to meet all of your needs while preserving the intimacy of each passenger.

A 140 m<sup>2</sup> reception area includes:

A reception/concierge desk,

An excursions desk,

The ship's administrative services,

The sales office, manned by our Guest Relations Officer,

Our 50 m<sup>2</sup> boutique which sells clothing, jewellery, beauty products, postcards and various accessories,

Toilets accessible to passengers with reduced mobility.

A new hydraulic platform with adjustable height provides:

Easier boarding than on any other cruise ship,

Easier Zodiac embarkation and disembarkation for expeditions,

Easier access to the sea for swimming and practising various water sports such as kayaking or paddle-boarding.

A pool deck offering:

A pool with a panoramic view, equipped with a counter-current swimming system,

A pleasant solarium,

An outdoor bar and lounge with armchairs and sofas.

A 200 m<sup>2</sup> main lounge which can accommodate all of our passengers to share convivial moments and to host activities

Wild Earth Travel

*Small Ships, Big Adventures*

**0800 945 3327** (within New Zealand) | +64 (0) 3 365 1355 | **1800 107 715** (within Australia)

info@wildearth-travel.com | wildearth-travel.com

# Wild Earth Travel

*Small Ships, Big Adventures*

**wildearth-travel.com**

**info@wildearth-travel.com**

organised during the day or evening.

Lastly, a theatre that seats 188, equipped with:

The latest sound and lighting technology,

A LED wall as the stage backdrop, for the projection of high-resolution images and videos.



and videos.

Wild Earth Travel

*Small Ships, Big Adventures*

**0800 945 3327** (within New Zealand) | +64 (0) 3 365 1355 | **1800 107 715** (within Australia)

info@wildearth-travel.com | **wildearth-travel.com**



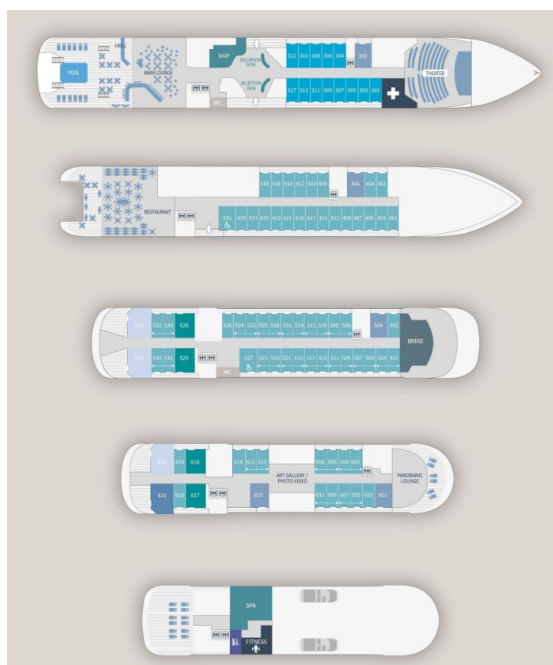
# Wild Earth Travel

*Small Ships, Big Adventures*

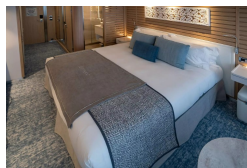
[wildearth-travel.com](http://wildearth-travel.com)

[info@wildearth-travel.com](mailto:info@wildearth-travel.com)

## INSIDE YOUR SHIP



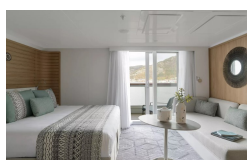
Deluxe Stateroom



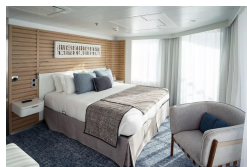
Deluxe Suite Deck 4



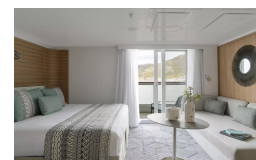
Deluxe Suite Deck 6



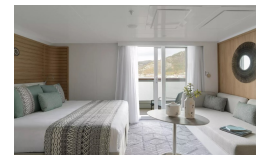
Grand Deluxe Suite Deck 6



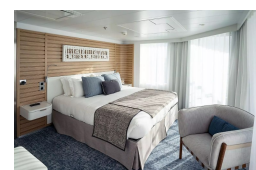
Deluxe Suite Deck 3



Deluxe Suite Deck 5



Grand Deluxe Suite Deck 5



Prestige Deck 4



Wild Earth Travel

*Small Ships, Big Adventures*

0800 945 3327 (within New Zealand) | +64 (0) 3 365 1355 | 1800 107 715 (within Australia)

[info@wildearth-travel.com](mailto:info@wildearth-travel.com) | [wildearth-travel.com](http://wildearth-travel.com)





# Wild Earth Travel

*Small Ships, Big Adventures*

**wildearth-travel.com**

**info@wildearth-travel.com**

## PRICING

06-Mar-2026 to 19-Mar-2026

Deluxe Stateroom	20480 AUD pp
Prestige Deck 4	21550 AUD pp
Prestige Deck 5	22210 AUD pp
Prestige Deck 6	23070 AUD pp
Deluxe Suite Deck 4	31070 AUD pp
Deluxe Suite Deck 6	31070 AUD pp
Deluxe Suite Deck 5	31070 AUD pp
Deluxe Suite Deck 3	31070 AUD pp
Prestige Deck 5 Suite	33460 AUD pp
Prestige Deck 6 Suite	34530 AUD pp
Privilege Suite Deck 5	35390 AUD pp
Privilege Suite Deck 6	35390 AUD pp
Grand Deluxe Suite Deck 6	36480 AUD pp
Grand Deluxe Suite Deck 5	36480 AUD pp

Wild Earth Travel  
*Small Ships, Big Adventures*

**0800 945 3327** (within New Zealand) | +64 (0) 3 365 1355 | **1800 107 715** (within Australia)

info@wildearth-travel.com | wildearth-travel.com



# Wild Earth Travel

*Small Ships, Big Adventures*

**wildearth-travel.com**

**info@wildearth-travel.com**

## SPECIAL OFFERS

Online prices reflect the current brochure fare savings of up to 30%. Prices may change based on demand. Terms and conditions apply. This special offer is subject to availability. Please contact us for more details.

Wild Earth Travel

*Small Ships, Big Adventures*

**0800 945 3327** (within New Zealand) | +64 (0) 3 365 1355 | **1800 107 715** (within Australia)

info@wildearth-travel.com | **wildearth-travel.com**