

# Wild Earth Travel

*Small Ships, Big Adventures*

[wildearth-travel.com](http://wildearth-travel.com)

[info@wildearth-travel.com](mailto:info@wildearth-travel.com)

## ISLAND TRAILS OF THE PHILIPPINES - A CRUISE FROM KEELUNG TO MANILA

Depart from Keelung to discover the small islands of the Philippines shaped by Spanish colonial heritage and World War II history. Share in traditional practices, witness ancient customs and be immersed in the natural environment of these secluded islands. On Taiwan's east coast, wander the elevated boardwalks, suspension bridges and hiking trails that wind through Taroko Gorge National Park. Encounter Japanese trading heritage at Luzon and visit the historic Cabo Engano lighthouse on Palau Island. Beachcomb on the Philippines' famously idyllic beaches snorkel and dive on the vibrant Catanduanes and Cuatro Islas. As we approach Manila, browse handicraft stores and visit the heritage churches, houses and shrines of Marinduque, home of the kalutang instrument, which is cited as one of the intangible cultural heritages of the Philippines.



### ITINERARY

#### DAY 1: KEELUNG

Board Coral Adventurer at 4:00 pm at Keelung, Taiwan. Settle into your stateroom and relax as we set sail across the Pacific Ocean. Join the Captain's welcome drinks and meet your crew and fellow guests as the sun sets.

#### HUALIEN, TAIWAN

This morning we arrive at Hualien City on the east coast of Taiwan. The central Pine Garden is a cultural centre set inside a former Japanese military office. The Hualien County Stone Sculpture Museum displays contemporary and traditional stone carvings. Tzu Chi Cultural Park is a tranquil green space, with statues and a meditation hall. On the Pacific Ocean coast, sprawling Nanbin Park features a popular night market. Explore the myriad of walking trails and suspension bridges that wind through towering marble valleys and past thundering waterfalls of Taroko Gorge National Park. Carved by the Liwu River, the spectacular Gorge is the largest marble canyon in the world and boasts a wide variety of trails, temples and landscapes.

#### CLAVERIA, LUZON

Wild Earth Travel

*Small Ships, Big Adventures*

0800 945 3327 (within New Zealand) | +64 (0) 3 365 1355 | 1800 107 715 (within Australia)

[info@wildearth-travel.com](mailto:info@wildearth-travel.com) | [wildearth-travel.com](http://wildearth-travel.com)



# Wild Earth Travel

*Small Ships, Big Adventures*

[wildearth-travel.com](http://wildearth-travel.com)

[info@wildearth-travel.com](mailto:info@wildearth-travel.com)

Located on the north coast of Luzon and directly south of Taiwan, Claveria is known as 'Paradise of the North'. On our visit here, cross the hanging bridge at Baranggay Nagsabaran and taste local food. Explore the rich biodiversity of the land, experience local catch fishing and learn about how difference species of fish are hatched at the Bureau of Fishery and Aquatic Resources. See one of the heritage houses, the grotto of the Lady of Lourdes and a 948 church bell at the Sta Maria Eco Park.

## CALAYAN ISLAND

One of five major islands belonging to the Babuyan Group located along the Luzon Strait, Calayan Island boasts pristine white sand beaches and great hiking terrains. Beach comb at Sibang Cove and hike to Nagudungan Hills for an spectacular view of the town, hills and cliffs.

## PALAU I ISLAND

Experience the natural beauty of Palaui Island National Park where wildlife encounters, both on land and in the sea are main attractions along with historic Cabo Engano lighthouse. The decommissioned 19th century Faro de Cabo Engano lighthouse on Palaui Island was built during the Spanish colonial period and is considered a National Cultural Treasure. Explore the Punta Verde falls and trek to faro de Cabo Engano at Cape Engano to be rewarded with a breathtaking view.

## POLILLO ISLAND

A relaxed tropical island, Polillo is the largest of 27 islands that make up the archipelago. With white sand beaches and clear waters, we will spend time snorkelling, swimming and kayaking around the small islets. Beachcomb and admire the rock formation resembling two chickens. Bird watching is available at close by Minasawa Island and Putting Bato has hidden caves to discover.

## CATANDUANES ISLANDS

Enjoy water activities and leisurely beach walks at some of the Philippines

famously scenic beaches with their palm-fringed white sand, aquamarine sea and coral reefs populated by vibrant coral and tropical fish. Enjoy having the island to yourself. At the UNESCO Geopark Reserve of Catanduanes Island explore its unique landscape with lagoons, caves and waterfalls and learn about the melding of Philippines and Spanish culture and history at the Museo de Cataduanes.

## BIRI & CAPUL ISLANDS

Biri Island, a marine protected reserve with opportunities to explore the underwater marine wonderland, we also learn about Biri Island's place in WWII history on our visit here. Visit the Magasang Rock formations for its view and take a dip in the water in the middle of these rocks. Those who choose to dive here have the opportunity to join the volunteer program by NGO Biri Initiative to help remove sea pests feeding on coral. Capul Island's church, Saint Ignatius of Loyola Parish Church, is a National Cultural Treasure as designated by the National Museum of the Philippines. Equally well known is the Capul Lighthouse which has been safely guiding mariners through the San Bernadino Strait since the 1890's. Visit these historic landmarks and take a walking tour leading to a natural spring once used by Spanish galleons to fetch water prior to their departure to Mexico.

## MARIPIPI

Known as the 'Isle of Gems' for its clear waters, friendly locals and dazzlingly bright white sand beach, Maripipi along with Sambawan and Camaza Island offer opportunities for snorkelling, diving, kayaking as well as bird watching in the lush forests. Visit the township of Viga and experience cultural immersion such as tasting local delicacies, watching weaving of wild vines and participating in pottery making.

## TACLOBAN, LEYTE

Learn more about Leyte's history at the MacArthur Landing Memorial National Park in Palo. The park honours General Douglas MacArthur and his return to the Philippines to help defeat the Japanese forces on the 20th of October 1944. On your visit here you will see the bronze statues of the heroic general and his comrades on a shallow pool. View artworks from around the world at Santo Nino Shrine & Heritage Museum, visit the Anibong shipwreck memorial and stroll through local markets.

Wild Earth Travel

*Small Ships, Big Adventures*

0800 945 3327 (within New Zealand) | +64 (0) 3 365 1355 | 1800 107 715 (within Australia)

[info@wildearth-travel.com](mailto:info@wildearth-travel.com) | [wildearth-travel.com](http://wildearth-travel.com)



# Wild Earth Travel

*Small Ships, Big Adventures*

[wildearth-travel.com](http://wildearth-travel.com)

[info@wildearth-travel.com](mailto:info@wildearth-travel.com)

## CUATRO ISLAS

Meaning 'four islands' in Spanish, Cuatros Islas is a group of elusive islands, three of which being inhabited and rarely visited by locals and tourists alike. They are an idyllic location for a full day of relaxing and water activities including snorkelling, diving, kayaking and cruising around the tropical paradise by Xplorer.

## BOHOL

Board a riverboat for a leisurely cruise along the picturesque Loboc River while enjoying a buffet-style lunch of local delicacies accompanied by local musicians. Enjoy passing by waterfront villages and watching local children swinging from rope swings strung from coconut palms. Moor up against a floating platform where women and children dressed in traditional costumes perform a lively song and dance performance where you are welcome to join in. Visit the Tarsiers Conservatory to see the world's smallest primate which are little bigger than a mango and are considered a near-threatened species. From the viewpoint lookout admire the cacao-coloured Chocolate Hills with their symmetrical mounds.

## MACTAN

Learn of Mactan history and visit the Lapu Lapu Monument is a majestic 20m bronze statue of the hero armed with a kampilan (a native sword) and a shield, erected to honour the bravery of the Datu on the very ground the battle was believed to have taken place. The Magellan Monument, on the other hand, is a large obelisk dedicated to the Portuguese explorer who brought Christianity to the Philippines. Learn about the art of making guitars at Alegre Guitar Factory, known for ukuleles and the bandurria, a plucked chordophone similar to a mandolin and used in Spanish folk music. Enjoy an optional traditional Mactan meal for lunch at the Sut TuKil restaurant.

## TICAO

Ticao Island is an ecological frontier for the conservation of Manta Rays and a rare subspecies of Visayan warty pig. Swim with Manta Rays and pass over wrecks of the world's biggest battleship - IJN Musashi. We may also stop in at

Matangtbig Spring for a fresh-water dip. Admire the old-style homes of San Jacinto and Monreal and enjoy watching the sunset onboard with a view of Guinlatayan Rock.

## MARINDUQUE

Go on a cultural tour by visiting heritage houses, churches and shrines. Browse traditional handicrafts stores and souvenir shops to learn more about the island province's local industries. Visit the Century-old Boac Cathedral and the Biglang Awa Shrine as well as the Marl Insects and Butterfly Garden. The area is also home of the Kalutang, a musical instrument made of two pieces of wood cited by the National Commission for Culture and the Arts as one of the intangible cultural heritages of the Philippines.

## DAY 17: MANILA

Our voyage ends in the Philippines capital of Manila. Disembark Coral Adventurer at 9:00am and bid farewell to new-found friends, the Master and crew.

### Please note:

Itineraries are subject to change.

Wild Earth Travel

*Small Ships, Big Adventures*

0800 945 3327 (within New Zealand) | +64 (0) 3 365 1355 | 1800 107 715 (within Australia)

[info@wildearth-travel.com](mailto:info@wildearth-travel.com) | [wildearth-travel.com](http://wildearth-travel.com)

# Wild Earth Travel

*Small Ships, Big Adventures*

[wildearth-travel.com](http://wildearth-travel.com)

[info@wildearth-travel.com](mailto:info@wildearth-travel.com)

## YOUR SHIP: CORAL GEOGRAPHER

**YOUR SHIP:** Coral Geographer

**VESSEL TYPE:** Expedition

**LENGTH:**

**PASSENGER CAPACITY:** 120

**BUILT/REFURBISHED:** 2020

### Expedition capabilities

- > Two trademark Xplorer tenders seat all passengers and facilitate comfortable shore excursions
- > Six zodiacs for more intrepid exploration
- > Lecture lounge for daily expedition briefings and expert presentations
- > Small onboard library featuring books on destinations and wildlife
- > Shallow draft and advanced navigation and propulsion systems allowing access to locations closed to large cruise ships

### Marine immersion

- > Navigator lounge in the bridge
- > Over 1000 square metres of open deck space including a wrap-around promenade deck with panoramic views
- > Engine room tours and a high level of crew interaction with guests

### Food and wine features

- > Single seating dining with communal table serves buffet breakfast and lunch, and multi-course table d'hote dinners
- > Showcase galley with viewing window creating fresh

small-batch cuisine featuring Australian and local produce

> Multiple indoor and outdoor bars, including our Explorer bar on the sundeck for sunset drinks

> Curated wine cellar featuring boutique wines and exceptional vintage Australian reds

Guest comfort

> All outside-facing guest cabins with en-suite bathrooms; the majority have a private balcony

> Active stabilisers to dampen sea motion

> Well-equipped gym

> Passenger elevator

> Wi-Fi available in all guest areas



guest areas

Wild Earth Travel

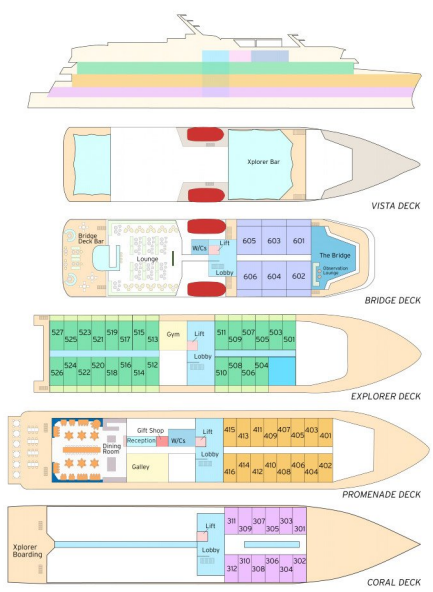
*Small Ships, Big Adventures*

0800 945 3327 (within New Zealand) | +64 (0) 3 365 1355 | 1800 107 715 (within Australia)

[info@wildearth-travel.com](mailto:info@wildearth-travel.com) | [wildearth-travel.com](http://wildearth-travel.com)



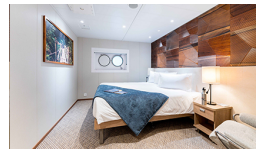
## INSIDE YOUR SHIP



Bridge Deck Balcony Suite



Coral Deck ■ Stateroom



Explorer Deck Balcony Stateroom



Promenade Deck Stateroom





# Wild Earth Travel

*Small Ships, Big Adventures*

[wildearth-travel.com](http://wildearth-travel.com)

[info@wildearth-travel.com](mailto:info@wildearth-travel.com)

## PRICING

03-Dec-2025 to 20-Dec-2025

**Coral Deck Stateroom** 14690 AUD pp

**Promenade Deck Stateroom** 17620 AUD pp

**Explorer Deck Balcony Stateroom** 23490 AUD pp

**Bridge Deck Balcony Suite** 31680 AUD pp



Wild Earth Travel

*Small Ships, Big Adventures*

0800 945 3327 (within New Zealand) | +64 (0) 3 365 1355 | 1800 107 715 (within Australia)

[info@wildearth-travel.com](mailto:info@wildearth-travel.com) | [wildearth-travel.com](http://wildearth-travel.com)