



## INUIT SPRING OF AMMASSALIK - GREENLAND LUXURY EXPEDITION

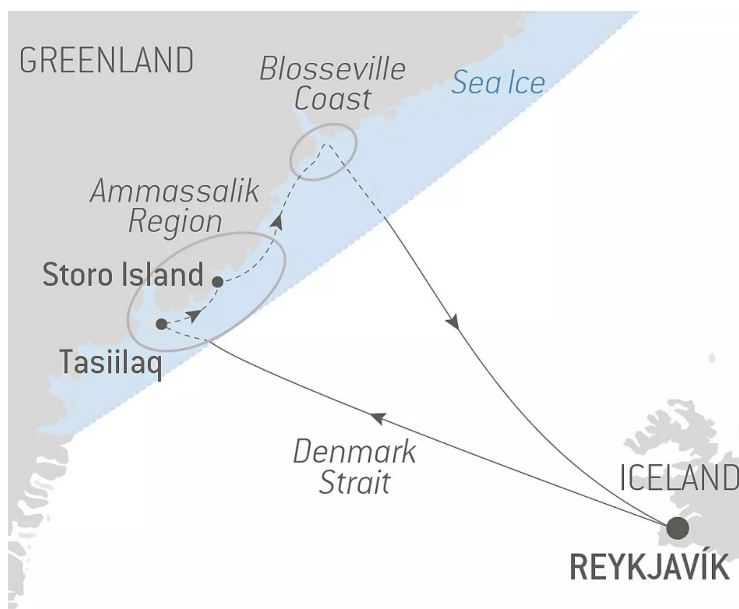
After the long winter, a thick coat of ice preserves the shores of the East coast of Greenland. These shores have long been coveted by the great explorers and approaching them means being in tune with powerful yet fragile nature; only the present matters here. Aboard *Le Commandant Charcot*, designed for polar exploration, you will explore the hypnotic and icy landscapes of the Ammassalik and Blosseville regions. You will respectfully access these exceptional lands, which are inaccessible to traditional ships during the spring. The uncertainty here offers surprises and *immaqa* (perhaps, in Inuktitut) moments frozen in time. As is taught by Inuit wisdom, life thrives on the present moment.

The colourful traditional houses make the isolated villages stand out in the surrounding whiteness. The Inuit (men, in Inuktitut) follow the rhythm of the changing seasons and the ice, as they perpetuate their traditions, such as hunting on dog sleds. An outing alongside the last hunters of the polar region will have you intoxicated by various sensations aboard this ancient means of transport. Among the first outside visitors of the season, you will be warmly welcomed by the community. During privileged exchanges mixed with joyful and authentic moments, you will learn about the village customs on the ice floe. Inuit hospitality is no myth, it is given in the warmth of a look or an exchanged smile.

As the midnight sun illuminates the white desert and the calving glaciers, you will walk through different states and forms of ice, a constantly evolving spectacle. Aboard *Le Commandant*

*Charcot* or on the ice floe, you will have opportunities for exploration among the fields of ice and the scenery of the hummocks that are as sublime as they are chaotic. You will enjoy an outing by kayak or zodiac in a polynya (area of open water surrounded by ice), or a polar hike to approach the icebergs caught in the ice floe. From the enveloping refuge of the ship, you will be able to admire a flock of eiders flying above the horizon, a majestic blue whale hugging the waves, or the great nanuk - the polar bear - and its impressive silhouette.

On the East coast of Greenland, all notions of time and distance are forgotten. The only thing that counts is the intensity of the moment spent in the heart of the ice. "Delight in what comes up", as Sylvain Tesson wrote in *The Velvet Queen*.





# Wild Earth Travel

*Small Ships, Big Adventures*

**wildearth-travel.com**

**info@wildearth-travel.com**

Ivet Queen.

## ITINERARY

### Day 1 REYKJAVÍK

Iceland's capital stretches along the edge of a vast bay in the west of the country. Perlan, the "Pearl of Reykjavik", a museum located on 'Oskjuhlíð hill, offers a panoramic view of the lush, green landscapes. A little further, one can easily spot the signpost showing the way to the evangelical Hallgrímskirkja church, and to the historical centre where one can stroll along the Skólavörðustígur and the Laugavegur, two lively streets with charming small shops. For some relaxation just outside of the city, visitors have the opportunity to visit the Reykjanes peninsula and its famous thermal lagoons of the Blue Lagoon.

### Day 2 SAILING THROUGH THE DENMARK STRAIT

Lying between Greenland and Iceland, the Denmark Strait was crossed for the first time by the Vikings in the late 10th century, during Erik the Red's expeditions. In the Second World War, its waters were the theatre of a battle between the Kriegsmarine and the Royal Navy, on 24 May 1941. In the wintertime, extremely dense pack ice forms along the Greenlandic coasts and, while the Transpolar Drift sweeps icebergs along throughout the year, the strait is generally clear of ice during the summer. In the depths of the strait lies the world's largest waterfall, an undersea cataract formed by the difference in temperature between the cold waters of the Greenland Sea and the warmer waters of the Irminger Sea. Numerous cetacean species thrive in this rich ecosystem.

### Days 3 - 8 EXPLORATION OF AMMASSALIK REGION

Still relatively unknown just a century ago, the east coast of Greenland remains the most authentic and majestic region in the Arctic. Explore this part of the world where the alpine mountains merge intimately with the sea and the fjords are adorned with high, snow-capped peaks and icebergs drifting or trapped in the pack ice. You will slowly immerse yourself in the heart of frozen landscapes of surreal beauty. The infinite variety of textures in the different types of ice creates an ever-changing scenery. Follow in the wake of the famous Pourquoi

Pas?, the ship of Captain Jean-Baptiste Charcot who set off with his crew in 1934 to land Paul-Émile Victor in Ammassalik. A small island of primitive and wild beauty, for his first ethnographic mission, during which he would study the Ammassalimiut, a little-known Inuit community. In this deceptively frozen landscape, the silence is broken only by the sounds of dogs and the grating of sled runners against the ice. You will receive a warm welcome in villages still protected by the fast ice. You will have the opportunity to discover the Inuit culture's ancestral traditions during joyous and authentic moments shared with the communities.

### Day 9 BLOSSEVILLE COAST

Aboard your ship, follow in the footsteps of Jules Poret de Blosseville, a French explorer and sailor. In 1833, aboard La Lilloise, he set off to discover this isolated and unexplored part of eastern Greenland and gave French names to various sites on the coast. The adventure probably has an unfortunate outcome, since the crew was never found. This uninhabited territory, which now bears his name, lies to the south of Scoresby Sund. Surrounded by ice, icebergs and pieces of pack ice, Blosseville Coast is one of these wild and hard-to-reach places that very few people are lucky enough to explore.

### Day 10 SAILING THROUGH THE DENMARK STRAIT

Lying between Greenland and Iceland, the Denmark Strait was crossed for the first time by the Vikings in the late 10th century, during Erik the Red's expeditions. In the Second World War, its waters were the theatre of a battle between the Kriegsmarine and the Royal Navy, on 24 May 1941. In the wintertime, extremely dense pack ice forms along the Greenlandic coasts and, while the Transpolar Drift sweeps icebergs along throughout the year, the strait is generally clear of ice during the summer. In the depths of the strait lies the world's largest waterfall, an undersea cataract formed by the difference in temperature between the cold waters of the Greenland Sea and the warmer waters of the Irminger Sea. Numerous cetacean species thrive in this rich ecosystem.

### Day 11 REYKJAVÍK

Iceland's capital stretches along the edge of a vast bay in the west of the country. Perlan, the "Pearl of Reykjavik", a museum located on 'Oskjuhlíð hill, offers a panoramic view of the lush, green landscapes. A little further, one can

Wild Earth Travel

*Small Ships, Big Adventures*

**0800 945 3327** (within New Zealand) | +64 (0) 3 365 1355 | **1800 107 715** (within Australia)

info@wildearth-travel.com | wildearth-travel.com



easily spot the signpost showing the way to the evangelical Hallgrímskirkja church, and to the historical centre where one can stroll along the Skólavordustigur and the Laugavegur, two lively streets with charming small shops. For some relaxation just outside of the city, visitors have the opportunity to visit the Reykjanes peninsula and its famous thermal lagoons of the Blue Lagoon.

#### Please Note:

Itineraries are subject to change.





## YOUR SHIP: LE COMMANDANT-CHARCOT

<b>YOUR SHIP:</b>	<b>Le Commandant-Charcot</b>
<b>VESSEL TYPE:</b>	<b>Polar Luxury Expedition</b>
<b>LENGTH:</b>	<b>149.9 meters</b>
<b>PASSENGER CAPACITY:</b>	<b>135 cabins</b>
<b>BUILT/REFURBISHED:</b>	<b>2018/2019</b>

Be the first aboard Le Commandant-Charcot, the world's luxury polar exploration vessel, and enjoy a unique sailing experience in the Arctic or Antarctic!

With its hybrid propulsion combining liquefied natural gas (LNG) and electric generators, Le Commandant-Charcot has been designed to minimise the environmental impact of travel to the furthest latitudes.

The decoration of the ship, imagined by two internationally renowned design and architecture firms - the studio of Jean-Philippe Nuel and Wilmotte & Associates - is designed to be in harmony with the environment. The approach is contemporary with the desire to create a warm and elegant setting; stone, wood and leather recall the natural environment in which the ship is sailing.

Equipped with just 135 staterooms including 31 suites with balconies and outside views, Le Commandant-Charcot welcomes you in an intimate and refined atmosphere. Outstanding gastronomy in the two restaurants, relaxation in the indoor pool surrounded by its winter garden, relaxation in the well-being area with sauna and Snow Room... Like on a private yacht, each of our guests is unique.

### PUBLIC AREAS

Le Commandant-Charcot has many common areas that are designed and equipped to meet all of your needs while preserving the intimacy of each passenger.

A 177 m<sup>2</sup> reception area includes: A reception/concierge desk, An expeditions desk, The ship's administrative services, The sales office, manned by our Hospitality & Travel Manager officer, Our boutique which sells clothing, jewellery, beauty products, postcards and various accessories, The image & photo desk.

The different lounges: A 302 m<sup>2</sup> main lounge including a 28 m<sup>2</sup> cigar lounge, a tea corner and a bar, with live music on selected evenings, A 400 m<sup>2</sup> panoramic bar and lounge, An open-air Bar.

The recreation spaces

Fitness & Beauty Corner: Fitness room: Elliptic, running machines, bicycles...

Beauty Corner: Hairdresser, Massage rooms, Sauna, Snow Room, Nail Shop.

Pool area: Indoor Pool and winter garden - Outdoor Pool

Theatre: Capacity: 270-276 - Main show room for conferences and live entertainment on selected evenings - State-of-the-art audio and video technology.

Leisure area: Public areas - Library - Medical centre.

16 Zodiac®.



16 Zodiac®.



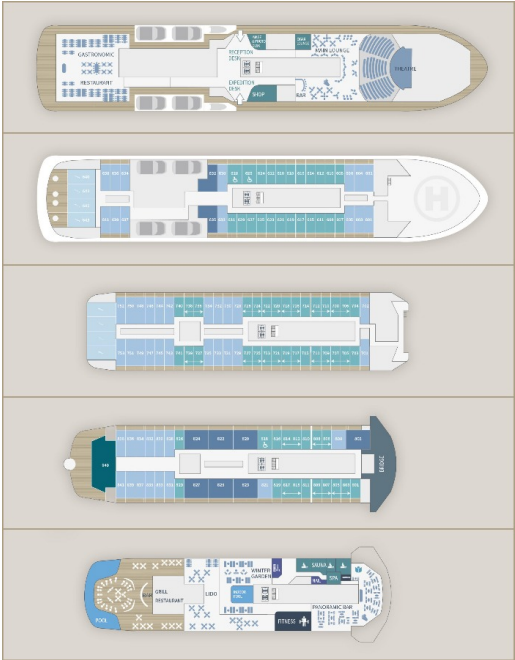


**Wild Earth Travel**  
*Small Ships, Big Adventures*

**wildearth-travel.com**

**info@wildearth-travel.com**

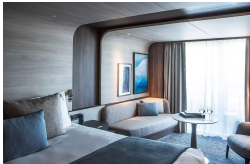
**INSIDE YOUR SHIP**



**Deluxe Suite Deck 6**



**Deluxe Suite Deck 7**



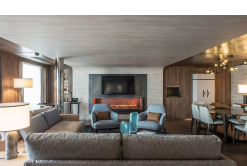
**Deluxe Suite Deck 8**



**Grand Prestige Suite**



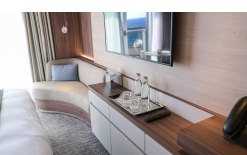
**Owner's Suite**



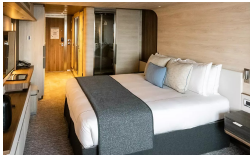
**Prestige Stateroom Deck 6**



**Prestige Stateroom Deck 7**



**Prestige Stateroom Deck 8**



**Wild Earth Travel**  
*Small Ships, Big Adventures*

**0800 945 3327** (within New Zealand) | +64 (0) 3 365 1355 | **1800 107 715** (within Australia)

info@wildearth-travel.com | wildearth-travel.com



PRICING

04-May-2025 to 14-May-2025

Prestige Stateroom Deck 6	27870 AUD pp
Prestige Stateroom Deck 7	28430 AUD pp
Prestige Stateroom Deck 8	28980 AUD pp
Deluxe Suite Deck 6	29820 AUD pp
Deluxe Suite Deck 7	31220 AUD pp
Deluxe Suite Deck 8	32330 AUD pp
Prestige Suite Deck 7	41780 AUD pp
Prestige Suite Deck 8	43150 AUD pp
Grand Prestige Suite	44550 AUD pp
Privilege Suite Deck 8	47330 AUD pp
Suite Duplex	65390 AUD pp
Owner's Suite	96430 AUD pp

14-May-2025 to 24-May-2025

Prestige Stateroom Deck 6	26180 AUD pp
Prestige Stateroom Deck 7	26700 AUD pp
Prestige Stateroom Deck 8	27220 AUD pp
Deluxe Suite Deck 6	28000 AUD pp
Deluxe Suite Deck 7	29310 AUD pp
Deluxe Suite Deck 8	30350 AUD pp
Prestige Suite Deck 7	39210 AUD pp
Prestige Suite Deck 8	40500 AUD pp
Grand Prestige Suite	41810 AUD pp
Privilege Suite Deck 8	44420 AUD pp
Suite Duplex	61350 AUD pp
Owner's Suite	96430 AUD pp

04-May-2026 to 14-May-2026

Prestige Stateroom Deck 6	33290 AUD pp
Prestige Stateroom Deck 7	33970 AUD pp
Prestige Stateroom Deck 8	34610 AUD pp
Deluxe Suite Deck 6	35620 AUD pp
Deluxe Suite Deck 7	37290 AUD pp
Deluxe Suite Deck 8	38610 AUD pp
Prestige Suite Deck 7	49950 AUD pp
Prestige Suite Deck 8	51610 AUD pp
Grand Prestige Suite	53280 AUD pp
Privilege Suite Deck 8	56610 AUD pp
Suite Duplex	78260 AUD pp
Owner's Suite	98130 AUD pp



**Wild Earth Travel**  
*Small Ships, Big Adventures*

**wildearth-travel.com**

**info@wildearth-travel.com**

**ADDITIONAL CHARGES:** Port Taxes & Fees 740 AUD pp

**Wild Earth Travel**  
*Small Ships, Big Adventures*

**0800 945 3327** (within New Zealand) | +64 (0) 3 365 1355 | **1800 107 715** (within Australia)

info@wildearth-travel.com | **wildearth-travel.com**





# Wild Earth Travel

*Small Ships, Big Adventures*



**wildearth-travel.com**

**info@wildearth-travel.com**

## UP TO 30% OFF - SPECIAL BONUS

Online prices reflect the current brochure fare savings of up to 30%. Prices may change based on demand. Terms and conditions apply. This special offer is subject to availability. Please contact us for more details.

**Wild Earth Travel**

*Small Ships, Big Adventures*

**0800 945 3327** (within New Zealand) | +64 (0) 3 365 1355 | **1800 107 715** (within Australia)

info@wildearth-travel.com | **wildearth-travel.com**