

# Wild Earth Travel

*Small Ships, Big Adventures*

**wildearth-travel.com**

**info@wildearth-travel.com**

## INFINITY GALAPAGOS 4 DAY CRUISE

Embark on an unforgettable journey to the Galapagos Islands with this itinerary. The adventure begins with an arrival at Baltra Island Airport, followed by a boat transfer to Santa Cruz. In the afternoon, explore the breathtaking Black Turtle Cove. The following day, discover the wonders of Genovesa Island, starting with El Barranco in the morning and Darwin Bay in the afternoon. On the third day, set foot on Santiago Island to explore the captivating Sullivan Bay in the morning and picturesque Rabida Island in the afternoon. The penultimate day features a visit to the Tortoise Breeding Center on Santa Cruz Island, where you can witness conservation efforts for these magnificent creatures. The trip concludes with a transfer back to Baltra Airport, leaving you with cherished memories of the Galapagos' extraordinary landscapes and wildlife encounters.



### ITINERARY

#### Day 1: Tuesday SANTA CRUZ ISLAND

In the morning: Baltra Airport Arrival Morning flight from Quito or Guayaquil to Baltra, Galapagos Islands. You will arrive at Baltra Island in the morning. After passing through immigration and baggage claim, you will be met by a Infinity staff member and transferred to the yacht. You will be shown to your cabin where you will have some time to settle in before lunch and a welcome briefing. In the afternoon: Black Turtle Cove Visit Black Turtle Cove in the northern part of Santa Cruz. This inlet is surrounded by mangroves and is only accessible by dinghy. The shallow cove is a haven for young marine life. Black-tip and white-tip reef sharks, sea turtles, and a variety of rays are often spotted here.

#### Day 2: Wednesday GENOVESA ISLAND

In the morning: El Barranco El Barranco, also known as Prince Phillip's Steps, is a steep, rocky path that leads up a high cliff rock face. A marvelous view can be appreciated from here. This site is also home to Palo Santo vegetation as well as red-footed boobies, short-eared owls, Galapagos storm petrels, and Galapagos doves. In the afternoon: Darwin Bay Visit the white-sand coral

Wild Earth Travel

*Small Ships, Big Adventures*

**0800 945 3327** (within New Zealand) | +64 (0) 3 365 1355 | **1800 107 715** (within Australia)

info@wildearth-travel.com | **wildearth-travel.com**



# Wild Earth Travel

*Small Ships, Big Adventures*

**wildearth-travel.com**

**info@wildearth-travel.com**

beach of Darwin Bay which includes a half mile trail (0,75km) that winds through mangroves filled with land birds. Nazca boobies, red-footed boobies, and swallow-tailed gulls, which can easily be spotted here. Further down the path we'll find tidal pools where sea lions swim playfully. At the end is a spectacular view of a cliff.

## Day 3: Thursday SANTIAGO AND RABIDA ISLANDS

In the morning: Sullivan Bay You will visit Sullivan Bay located on the southeast part of Santiago. This place is interesting for its geology because the area is covered by lava flows. This place has elevations in the form of small volcanoes formed by the lava flows In the afternoon: Rabida You will visit Rabida Island (or Jervis) which is one of the most colorful and volcanically varied islands in the archipelago as well as a great snorkeling site. We will start on Rabida's famous maroon/red sand beach, and after an easy hike, you will arrive to a stunning lookout to enjoy the amazing landscapes. The island is a birdwatcher's delight. Some species are abundant such as a few varieties of finches, Galapagos vermilion flycatchers, Galapagos hawks and brown pelicans.

## Day 4: Friday SANTA CRUZ ISLAND

In the morning: Fausto Llerena Breeding Center You will visit "Fausto Llerena" Giant Tortoises Creeding Center in Puerto Ayora, Santa Cruz Island, where giant tortoises are bred in captivity; this is home to tortoises ranging from 3-inches (new hatchlings) to 4-feet long adults. Subspecies of the giant tortoises interact with one another, and many of the older tortoises are accustomed to humans stretching out their heads for a photo opportunity. The babies are kept until they are about four years-old and strong enough to survive on their own. Afterwards: Baltra Airport Departure After this final visit, you will be transferred to the Baltra airport in time for your flight back to the mainland.

### Please Note:

Itineraries are subject to change.

Wild Earth Travel  
*Small Ships, Big Adventures*

**0800 945 3327** (within New Zealand) | +64 (0) 3 365 1355 | **1800 107 715** (within Australia)

info@wildearth-travel.com | **wildearth-travel.com**



# Wild Earth Travel

*Small Ships, Big Adventures*

**wildearth-travel.com**

**info@wildearth-travel.com**

## YOUR SHIP: INFINITY

<b>YOUR SHIP:</b>	<b>Infinity</b>
<b>VESSEL TYPE:</b>	<b>Luxury Motor Yacht</b>
<b>LENGTH:</b>	<b>161 feet / 49 meters</b>
<b>PASSENGER CAPACITY:</b>	<b>20</b>
<b>BUILT/REFURBISHED:</b>	<b>2018</b>

Infinity yacht, the best way to enjoy a great adventure and get to know the Galapagos Islands, surrounded by luxury and comfort. This beautiful ship was designed with families and small groups in mind. With two large suites and eight cabins, some of which are interconnected, all with panoramic windows and personal balconies, guests will feel right at home. Travelers can choose from 4, 5, and 8-day itineraries that are all full of adventure. With spacious social areas, such as an al fresco dining area, barbecue area, and living room, guests will be comfortable during their entire journey. When guests are aboard Infinity they will enjoy every second of their trip with the help of a cruise director and an attentive staff.



Wild Earth Travel

*Small Ships, Big Adventures*

**0800 945 3327** (within New Zealand) | +64 (0) 3 365 1355 | **1800 107 715** (within Australia)

info@wildearth-travel.com | **wildearth-travel.com**

# Wild Earth Travel

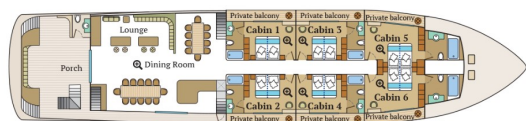
*Small Ships, Big Adventures*

[wildearth-travel.com](http://wildearth-travel.com)

[info@wildearth-travel.com](mailto:info@wildearth-travel.com)

## INSIDE YOUR SHIP

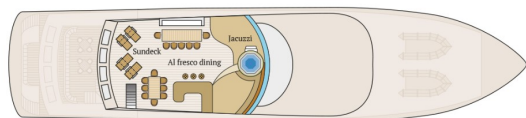
Main Deck



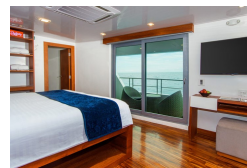
Upper Deck



Sundeck



Cabin



Wild Earth Travel

*Small Ships, Big Adventures*

0800 945 3327 (within New Zealand) | +64 (0) 3 365 1355 | 1800 107 715 (within Australia)

[info@wildearth-travel.com](mailto:info@wildearth-travel.com) | [wildearth-travel.com](http://wildearth-travel.com)

# Wild Earth Travel

*Small Ships, Big Adventures*

[wildearth-travel.com](http://wildearth-travel.com)

[info@wildearth-travel.com](mailto:info@wildearth-travel.com)

## PRICING

**17-Jun-2025 to 20-Jun-2025**

Cabin	3945 USD pp
-------	-------------

**01-Jul-2025 to 04-Jul-2025**

Cabin	3945 USD pp
-------	-------------

**15-Jul-2025 to 18-Jul-2025**

Cabin	3945 USD pp
-------	-------------

**12-Aug-2025 to 15-Aug-2025**

Cabin	3945 USD pp
-------	-------------

**13-Jan-2026 to 16-Jan-2026**

Cabin	3945 USD pp
-------	-------------

**27-Jan-2026 to 30-Jan-2026**

Cabin	3945 USD pp
-------	-------------

**10-Mar-2026 to 13-Mar-2026**

Cabin	3945 USD pp
-------	-------------

**21-Apr-2026 to 24-Apr-2026**

Cabin	3945 USD pp
-------	-------------

**05-May-2026 to 08-May-2026**

Cabin	3945 USD pp
-------	-------------

**19-May-2026 to 22-May-2026**

Cabin	3945 USD pp
-------	-------------

**02-Jun-2026 to 05-Jun-2026**

Cabin	3945 USD pp
-------	-------------

**16-Jun-2026 to 19-Jun-2026**

Cabin	3945 USD pp
-------	-------------

**30-Jun-2026 to 03-Jul-2026**

Cabin	3945 USD pp
-------	-------------

**14-Jul-2026 to 17-Jul-2026**

Cabin	3945 USD pp
-------	-------------

**28-Jul-2026 to 31-Jul-2026**

Cabin	3945 USD pp
-------	-------------

**11-Aug-2026 to 14-Aug-2026**

Cabin	3945 USD pp
-------	-------------

**06-Oct-2026 to 09-Oct-2026**

Cabin	3945 USD pp
-------	-------------

**20-Oct-2026 to 23-Oct-2026**

Cabin	3945 USD pp
-------	-------------

**03-Nov-2026 to 06-Nov-2026**

Cabin	3945 USD pp
-------	-------------

**17-Nov-2026 to 20-Nov-2026**

Cabin	3945 USD pp
-------	-------------

**01-Dec-2026 to 04-Dec-2026**

Cabin	3945 USD pp
-------	-------------

**15-Dec-2026 to 18-Dec-2026**

Cabin	3945 USD pp
-------	-------------

Wild Earth Travel  
*Small Ships, Big Adventures*

**0800 945 3327** (within New Zealand) | +64 (0) 3 365 1355 | **1800 107 715** (within Australia)

[info@wildearth-travel.com](mailto:info@wildearth-travel.com) | [wildearth-travel.com](http://wildearth-travel.com)