



# Wild Earth Travel

*Small Ships, Big Adventures*

**wildearth-travel.com**

**info@wildearth-travel.com**

## INDONESIAN TEMPLES & VOLCANOES LUXURY CRUISE

From Bali to Singapore, set sail aboard Le Soleal for a 13-day expedition cruise to the heart of fascinating Indonesia. Take a unique trip to discover the world's largest archipelagic state, featuring ancient temples and modern cities, impenetrable jungle and majestic volcanoes, historic towns and chains of idyllic islands. And of course, there will be precious encounters with a diverse population.

Your journey will begin in the mysterious Komodo, a small, wild island whose national park is listed as a UNESCO World Heritage Site. Among other things, it is home to the famous Komodo dragons, gigantic monitor lizards that can grow more than three metres long. Here you will be able to see them in their natural environment.

In Badas, on the island of Sumbawa, you will be welcomed by the inhabitants of Pamulung village, where you will be able to witness a traditional ceremony.

You will then set sail to Probolinggo, one of the access points to Mount Bromo. This active volcano in the Tengger mountains stands 2,329 metres tall in the middle of a protected nature reserve.

During your call at Semarang, a cosmopolitan city with Chinese, Indo-Arab and European influences, you will visit the incredible site of Borobudur. Listed as a UNESCO World Heritage Site, this monumental Buddhist temple compounds from the 8th and 9th centuries is an artistic marvel with over 500 Buddha statues.

Le Soleal will then set course for the south-western tip of Java. On the edge of the Sunda Strait, you will discover Ujung Kulon National Park. In addition to being a place of great natural beauty and of geological interest, notably for the study of island volcanoes, the park contains the largest remaining area of lowland rainforest on the island. It also includes the Krakatau Nature Reserve, and you will have the chance to observe the volcano during a unique sailing experience.

Your next port of call will be the Belitung islands, to the east of Sumatra. This archipelago made up of many islands, the two largest being Bangka and Belitung, will delight you with its long beaches with their giant granite rock formations, similar to those found in the Seychelles, coming out of the water.

Your journey will end in Singapore, city-State on the edges of the Orient, where you will be seduced by the unique multicultural atmosphere of this "garden city", home to wonderful botanical tropical gardens, UNESCO World Heritage Sites.

**Wild Earth Travel**

*Small Ships, Big Adventures*

**0800 945 3327** (within New Zealand) | +64 (0) 3 365 1355 | **1800 107 715** (within Australia)

info@wildearth-travel.com | **wildearth-travel.com**

# Wild Earth Travel

*Small Ships, Big Adventures*

[wildearth-travel.com](http://wildearth-travel.com)

[info@wildearth-travel.com](mailto:info@wildearth-travel.com)



During your journey at sea, make the most of the many services and activities on board. Treat yourself to a moment of relaxation in the spa or stay in shape in the fitness centre. Depending on the season, let yourself be tempted by the swimming pool or a spot of sunbathing. This journey without a port of call will also be an opportunity to enjoy the conferences or shows proposed on board, depending on the activities offered, or to do some shopping in the boutique or to meet the PONANT photographers in their dedicated space. As for lovers of the open sea, they will be able to visit the ship's upper deck to admire the spectacle of the waves and perhaps be lucky enough to observe marine species. A truly enchanted interlude, combining comfort, rest and entertainment.

## Day 3 KOMODO NATIONAL PARK

Between the islands of Sumbawa and Flores, Komodo National Park welcomes you to discover its natural wonders. At the very heart of the Indonesian archipelago, the three islands that form it - Komodo, Rinca and Padar - owe their renown to the famous eponymous dragons, enormous lizards over two metres long, which live in its grassy savannah. This jagged and hilly volcanic territory belonging to the Sunda Islands is a UNESCO World Heritage Site because of its incredible terrestrial and marine biodiversity. Admire its palette of colours, intermingling the sparkling whites of the beaches, the deep blues of the coral-filled water and the soft greens of its pastures.

## Day 4 BADAS, SUMBAWA

The port of Badas is part of the greater township of Sumbawa Besar, on the island of Sumbawa. Like most of Sumbawa the people hold their culture strong as a major part of their identity. The island has a strong influence from the Makassarese of Sulawesi, who over the centuries have introduced a lot of their culture into Sumbawa. Join your expedition team and local guides for a tour by bus to Pamulung Village where you will be welcomed by the head of the village and have the opportunity to witness first-hand the local traditions of rice pounding, weaving and also witness a wedding procession. Your visit will conclude with an exciting Sumbawa buffalo race, an event that will be held in honour of our visit.

## Day 5 PROBOLINGGO, JAVA

tage Sites.

## ITINERARY

### Day 1 BENOA, BALI

If it's a taste of exotic authenticity you're after, prepare to be spell-bound by the island of Bali, tucked away in the heart of the Indonesian archipelago. The beauty and diversity of its landscapes, the depth and richness of its cultural heritage and the plethora of activities on offer here make Bali a little slice of heaven on Earth. The island's southern coast enthral with its white sand beaches, its picturesque little fishing villages such as Benoa, and its hills patchworked with terraced rice paddies further inland. Nicknamed 'the Island of Gods' for its sumptuous temples, Bali is the beating heart of Indonesian Hinduism.

### Day 2 AT SEA

Wild Earth Travel

*Small Ships, Big Adventures*

0800 945 3327 (within New Zealand) | +64 (0) 3 365 1355 | 1800 107 715 (within Australia)

[info@wildearth-travel.com](mailto:info@wildearth-travel.com) | [wildearth-travel.com](http://wildearth-travel.com)



# Wild Earth Travel

*Small Ships, Big Adventures*

**wildearth-travel.com**

**info@wildearth-travel.com**

Nestled inside the massive Tengger caldera surrounded by a sea of sand, Mount Bromo is the epitome of desolate beauty. The volcanic complex dates back to about 820,000 years ago and consists of five overlapping stratovolcanoes, each truncated by a caldera. Lava domes, pyroclastic cones, and a maar occupy the flanks of the massif. The surreal lunar landscape has spawned countless legends and myths. Mt Bromo has particular significance for the Hindu Tengger people who believe that this was the site where a brave prince sacrificed his life for his family. After an early departure from the ship guest will travel by bus to Mount Bromo to enjoy this surreal site.

## Day 6 AT SEA

During your journey at sea, make the most of the many services and activities on board. Treat yourself to a moment of relaxation in the spa or stay in shape in the fitness centre. Depending on the season, let yourself be tempted by the swimming pool or a spot of sunbathing. This journey without a port of call will also be an opportunity to enjoy the conferences or shows proposed on board, depending on the activities offered, or to do some shopping in the boutique or to meet the PONANT photographers in their dedicated space. As for lovers of the open sea, they will be able to visit the ship's upper deck to admire the spectacle of the waves and perhaps be lucky enough to observe marine species. A truly enchanted interlude, combining comfort, rest and entertainment.

## Day 7 SEMARANG

Semarang enjoys a strategic location on the northern coast of Java, making it a cosmopolitan port town and a melting pot of Chinese, Indo-Arabic and European cultures. Before setting off to explore the region's treasures, take a tour of the old town and its smattering of old colonial buildings. Here in Indonesia's most Chinese town, don't miss a trip to the Chinatown district. If it's culture you're after, journey deeper into the green, rolling inland region, passing by volcanoes and rice paddies until you reach the royal town of Yogyakarta and one of its ancient kingdoms, the Borobudur : this Buddhist temple is a UNESCO World Heritage Site and one of the world's largest temples.

## Day 8 AT SEA

During your journey at sea, make the most of the many services and activities on board. Treat yourself to a moment of relaxation in the spa or stay in shape in the fitness centre. Depending on the season, let yourself be tempted by the swimming pool or a spot of sunbathing. This journey without a port of call will also be an opportunity to enjoy the conferences or shows proposed on board, depending on the activities offered, or to do some shopping in the boutique or to meet the PONANT photographers in their dedicated space. As for lovers of the open sea, they will be able to visit the ship's upper deck to admire the spectacle of the waves and perhaps be lucky enough to observe marine species. A truly enchanted interlude, combining comfort, rest and entertainment.

## Day 9 UJUNG KULON NATIONAL PARK, JAVA

Situated at the westernmost tip of Java, Ujung Kulon National Park includes the eponymous peninsula and the Krakatoa volcano nature reserve. A natural sanctuary for Asian wildlife, the park is home to numerous species of wild animals, including the last known population of Javan rhinoceroses, estimated at some sixty individuals. You will be enraptured by the exceptional beauty of this place, its forests, its jagged coastline and its islands.

## Day 10 SAILING ALONG KRAKATOA

Krakatoa, or Krakatau, is a name familiar to most, though few know where it is located. Lying in the Sunda Strait, between Java and Sumatra on the Pacific ring of fire, is the site of the largest volcanic eruption in modern history. The 1883 eruptions culminated with a colossal blast that literally blew Krakatau apart. The noise was heard over 4,600 km away. Eruptions since 1927 have built a new cone known as Anak Krakatau ("The child of Krakatau") that is still active, with its most recent eruptive episode having begun in 1994. Quiet periods of a few days alternate with spectacular Strombolian eruptions. Guest activities will be determined by the level of volcanic activity on the day and may involve ship based viewing or zodiac tour.

## Day 11 BELITUNG ISLANDS

## Day 12 AT SEA

Wild Earth Travel

*Small Ships, Big Adventures*

**0800 945 3327** (within New Zealand) | +64 (0) 3 365 1355 | **1800 107 715** (within Australia)

info@wildearth-travel.com | wildearth-travel.com



# Wild Earth Travel

*Small Ships, Big Adventures*

**wildearth-travel.com**

**info@wildearth-travel.com**

During your journey at sea, make the most of the many services and activities on board. Treat yourself to a moment of relaxation in the spa or stay in shape in the fitness centre. Depending on the season, let yourself be tempted by the swimming pool or a spot of sunbathing. This journey without a port of call will also be an opportunity to enjoy the conferences or shows proposed on board, depending on the activities offered, or to do some shopping in the boutique or to meet the PONANT photographers in their dedicated space. As for lovers of the open sea, they will be able to visit the ship's upper deck to admire the spectacle of the waves and perhaps be lucky enough to observe marine species. A truly enchanted interlude, combining comfort, rest and entertainment.

## Day 13 SINGAPORE

Nicknamed the Garden City, Singapore stretches across Malaysia's southern-most region. Experience the vibrant hustle and bustle of this city-state for yourself at the Marina Bay. No too far away is the historic centre, offering up a unique smorgasbord of neoclassical buildings and contemporary towers. Decked out in topiary, the pavements of Orchard Road are also home to countless shopping centres. The colourful markets in Chinatown and Little India are the perfect opportunity to quell hunger pangs in a hawker centre, one of the city's traditional snack bars. Between the two districts, get a slice of history with a trip to the Raffles dock. It was here that Englishman Sir Raffles, the founder of the city, is said to have arrived one fateful day in January 1819.

### Please note:

Itineraries are subject to change.

**Wild Earth Travel**

*Small Ships, Big Adventures*

**0800 945 3327** (within New Zealand) | +64 (0) 3 365 1355 | **1800 107 715** (within Australia)

info@wildearth-travel.com | **wildearth-travel.com**

# Wild Earth Travel

*Small Ships, Big Adventures*

**wildearth-travel.com**

**info@wildearth-travel.com**

## YOUR SHIP: LE SOLEAL

<b>YOUR SHIP:</b>	<b>Le Soleal</b>
<b>VESSEL TYPE:</b>	<b>Luxury Small Ship</b>
<b>LENGTH:</b>	<b>142 metres</b>
<b>PASSENGER CAPACITY:</b>	<b>264</b>
<b>BUILT/REFURBISHED:</b>	<b>2013</b>



Sailing under the French flag, this magnificent yacht of only 132 staterooms and suites, with balconies, joined in 2013. You will be enchanted by the contemporary decor inspired by the luxury yachting world, with fluid lines and a modern colour scheme combining natural wood with shades of grey and white.

A refined ambience is enhanced by the quality of the workmanship and materials: white Corian counters in the lobby contrast with the warmth of leather to recall a boat's hull, while the central sculpture of enamelled pieces takes its inspiration from the sea. In the loungebar, the carpet picks up a tennis stripe theme symbolising a certain idea of cruising, one synonymous with French elegance and a chic seaside spirit.

**Wild Earth Travel**

*Small Ships, Big Adventures*

**0800 945 3327** (within New Zealand) | +64 (0) 3 365 1355 | **1800 107 715** (within Australia)

info@wildearth-travel.com | **wildearth-travel.com**

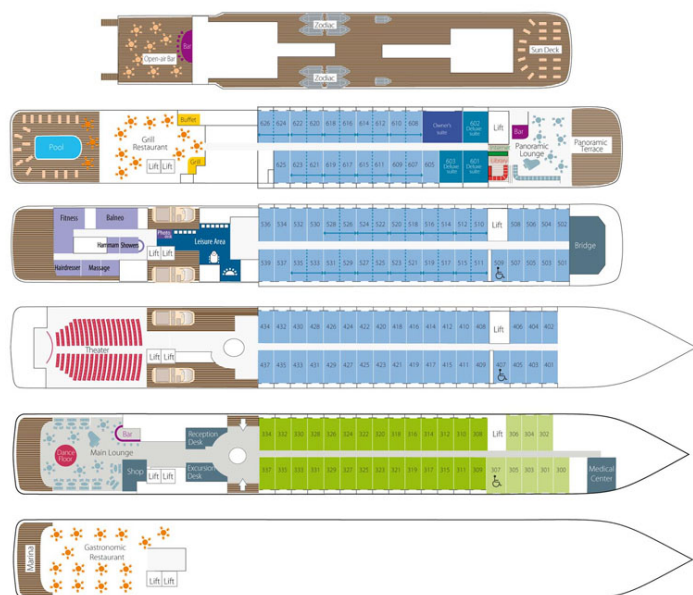
# Wild Earth Travel

*Small Ships, Big Adventures*

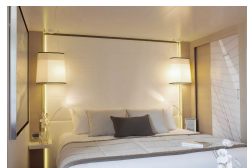
[wildearth-travel.com](http://wildearth-travel.com)

[info@wildearth-travel.com](mailto:info@wildearth-travel.com)

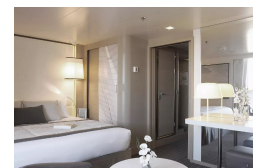
## INSIDE YOUR SHIP



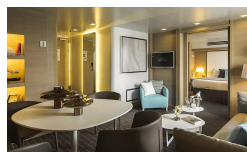
DeLuxe Stateroom



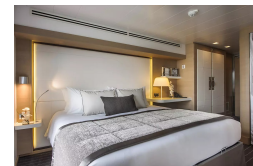
Deluxe Suite



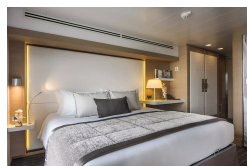
Owner's Suite



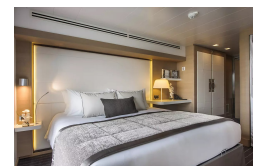
Prestige Stateroom - Deck 4



Prestige Stateroom - Deck 5



Prestige Stateroom - Deck 6



Prestige Suite - Deck 5



Prestige Suite - Deck 6



Wild Earth Travel

*Small Ships, Big Adventures*

0800 945 3327 (within New Zealand) | +64 (0) 3 365 1355 | 1800 107 715 (within Australia)

[info@wildearth-travel.com](mailto:info@wildearth-travel.com) | [wildearth-travel.com](http://wildearth-travel.com)



PRICING

22-Oct-2025 to 03-Nov-2025

Superior Stateroom	13150 AUD pp
DeLuxe Stateroom	14260 AUD pp
Prestige Stateroom - Deck 4	15860 AUD pp
Prestige Stateroom - Deck 5	16650 AUD pp
Prestige Stateroom - Deck 6	17610 AUD pp
Deluxe Suite	24580 AUD pp
Prestige Suite - Deck 5	33320 AUD pp
Prestige Suite - Deck 6	35070 AUD pp
Owner's Suite	41500 AUD pp

ADDITIONAL CHARGES: Port Taxes 890 AUD pp



# Wild Earth Travel

*Small Ships, Big Adventures*

**wildearth-travel.com**

**info@wildearth-travel.com**

## SPECIAL OFFERS

Online prices reflect the current brochure fare savings of up to 30%. Prices may change based on demand. Terms and conditions apply. This special offer is subject to availability. Please contact us for more details.

Wild Earth Travel

*Small Ships, Big Adventures*

**0800 945 3327** (within New Zealand) | +64 (0) 3 365 1355 | **1800 107 715** (within Australia)

info@wildearth-travel.com | **wildearth-travel.com**