



Wild Earth Travel

Small Ships, Big Adventures

wildearth-travel.com

info@wildearth-travel.com

INDONESIAN EXPLORER: RAJA AMPAT TO PAPUA NEW GUINEA

Discover paradise on an authentic expedition cruise through Indonesia's remote and little known tropical islands as you swim with the Whale Sharks in Triton Bay, walk with Komodo Dragons, discover Jacques Cousteau's "underwater nirvana" Wakatobi National Park and explore the turquoise waters and rainbow corals of Raja Ampat as we traverse powdery white sand beaches and untamed jungles.

During our voyage from Bali to Port Moresby, which includes a flight from Port Moresby to Cairns, Australia, we have the opportunity to see Birds-of-paradise and many more endemic species, and visit remote tribes. A true expedition voyage in every sense, our journey will explore Indonesia's rarely visited and little known biodiverse-rich jungle-capped islands scattered across pristine pellucid waters well beyond traditional tourist routes. Join us and discover a true paradise where untouched dense jungles home to some of the rarest flora and fauna on the planet meet crystalline tropical waters teeming with exotic marine life and some of the world's best coral reefs all wrapped in a land steeped in history and rich in culture and tradition. Comprised of some 18,000 islands, this Southeast Asian archipelago's fascinating human history dates back almost 2 million years. European arrival saw Portuguese spice traders chasing the fragrant bounty of nutmeg and cloves in the 16th Century, this was followed by Dutch colonisation then Japanese occupation during World War II before Indonesia regained its independence in 1949.

While still a heavy hitter on the spice trading scene, Indonesia is

now attracting attention for having one of the richest concentrations of flora and fauna on the planet. One of the world's 17 mega diverse countries, Indonesia is home to 2 of the planet's 25 biodiversity hotspots, 18 of the World Wildlife Fund's Global 200 ecoregions and 24 of BirdLife International's Endemic Bird Areas. Its dense forests, jungles, oceans and waterways we will be exploring boast more than 25,000 species of flowering plants (40 per cent of which are endemic), 1,592 bird species (430 of which are endemic and 114 considered extremely threatened), 1,051 reptile and amphibian species, 515 species of mammal and half of the world's fish species.

For botanists, birders, photographers and nature lovers alike, this expedition offers numerous opportunities to spot once-in-a-lifetime species and experience rare wildlife encounters on remote and unknown islands. Sublime wildlife, incredible underwater encounters, exceptional birding and thrilling cultural exchanges await on Indonesian Explorer. This voyage includes the option to join a sea kayaking excursion with an expert guide. Kayakers are rewarded with tranquil, tropical settings and are a source of fascination to the locals who often paddle their canoes out to join them, and invite them back to their villages.

Wild Earth Travel

Small Ships, Big Adventures

0800 945 3327 (within New Zealand) | +64 (0) 3 365 1355 | **1800 107 715** (within Australia)

info@wildearth-travel.com | **wildearth-travel.com**

Wild Earth Travel

Small Ships, Big Adventures

wildearth-travel.com

info@wildearth-travel.com



r villages.

ITINERARY

Day 1 - Bali, Indonesia

For centuries Bali has captivated the imagination of artists, writers, and travellers with its landscapes of emerald terraced rice fields back-dropped by the sacred volcano of Mount Agung. Make your way to the hotel where our group will spend the first night of the expedition. This evening meet your fellow voyagers and expedition guides over dinner at the hotel.

Day 2 - Denpasar

Enjoy breakfast followed by time to explore the cultural and historical delights of Bali's capital. This afternoon transfer to Heritage Adventurer where your Captain and Expedition Team will welcome you aboard as we set sail for

Sumbawa Island.

Day 3 - Sumbawa Island

East of its more famous sibling Lombok, mountainous Sumbawa Island blends laid back island life with spectacular volcanic ridges, terraced rice fields, tangled jungles and beautiful sandy beaches replete with stunning coral reefs and remote bays awaiting exploration. Historically divided between east (Bimanese speakers) and west (Sumbawanese speakers) this isolated island that time almost forgot juxtaposes luxurious mansions alongside old wooden huts, remote wilderness and traditional Adat law and lore. Today we will experience a number of time-honoured traditions and cultural encounters including meeting the creators of the famed intricate hand-woven ikat fabric and observing ancient tribal rites for a truly authentic immersion in the local culture.

Day 4 - Komodo National Park

A sanctuary for the giant monitor lizard, the Komodo Dragon, walk along a forested pathway to a viewing area for a closer look at these prehistoric reptiles which can grow up to more than 3 metres in length and weigh over 135 kilograms. The surrounding forest is home to Timor Deer, the favourite prey of the dragons, as well as elegant Yellow-crested Cockatoos. Enjoy snorkelling off splendid Pink Beach, a world-class experience often described as "swimming in an aquarium".

Day 5 - Wakatobi National Park

Famously described by legendary underwater explorer and conservationist Jacques Cousteau as an "underwater nirvana", Wakatobi is home to breathtaking coral walls. Today's snorkel excursions reveal an incredible array of marine reef inhabitants; underwater photographers will appreciate a bizarre macro world among the corals. Highlights include colourful Frogfish, octopus, Marbled Snake Eels, Cockatoo Waspfish, Flying Gurnards, multitudes of crab species and dazzling anemones.

Day 6 - Buru Island

Wild Earth Travel

Small Ships, Big Adventures

0800 945 3327 (within New Zealand) | +64 (0) 3 365 1355 | 1800 107 715 (within Australia)

info@wildearth-travel.com | wildearth-travel.com



Wild Earth Travel

Small Ships, Big Adventures

wildearth-travel.com

info@wildearth-travel.com

Fascinating and seldom visited, Buru Island is located at the boundary between the biogeographic zones of Australia and Asia. A high proportion of the species of birds and mammals that occur here are found nowhere else with 10 endemic bird species and 4 endemic mammals as well as a number of near-endemic species. This morning we will explore these remote shores together with our expert naturalists and guides. Enjoy opportunities to hike in the forests in search of wildlife and many of the endemic species and enjoy the hospitality of local communities during village visits.

Days 7,8 & 9 - Raja Ampat

Lapped by stunning turquoise waters, Raja Ampat's collection of 1,500 tiny, jungle-cloaked islands are among Indonesia's most beautiful. We plan to spend 3 days exploring the bounty of rainbow corals, shoals of multi-coloured fish, intriguing ocean-carved limestone formations and jungles of this tropical paradise of forgotten islands. Believed to contain the most biodiverse marine habitat on the planet, the waters surrounding Raja Ampat are home to 600 species of hard coral and 1,200 types of reef fish and make for exceptional snorkelling and Zodiac cruising. On land, spotting the brilliant Wilson's Bird-of-paradise and Red Bird-of-paradise will be high on our agenda here, with early morning visits planned ensuring the very best opportunity for all to see these remarkable birds in their natural habitat and, hopefully, witness their rarely-seen mating dance around their 'lekking' trees. Other activities could include beachcombing, visiting villages and engaging in cultural exchanges with locals and forest walks.

Day 10 - Misool Island

Part of the Sultanate of Tidore during the spice trade wars, Misool Island is the second largest island in the aquatic wonderland that is Raja Ampat (aka Four Kings Islands, named after its four main islands). Rich in heritage, it was colonised by the Dutch, however still maintains its cultural essence and traditional ways of life with indigenous constructions, folk dance and respect for nature prevailing. On land, discover caves hidden among verdant forests featuring rock art dating back more than 5,000 years, while under its protected waters, Bumphead Parrotfish, Clownfish, Manta Rays, Ghost Pipefish, Harlequin Shrimp, Pygmy Seahorse and more can be found among spectacular coral gardens and sea-cave cemeteries. Over the course of the day we aim to explore the labyrinth of caves and passages, and hike up to the viewing platforms to enjoy the spectacular vistas.

Day 11 - Bomberai Peninsula

Today we have a full day of exploration planned at the seldom visited Bomberai Peninsula, which is also often referred to as the Bird's Beak Peninsula for its location to the south of Bird's Head Peninsula. A lush tropical forest blankets the hills which rise to the remote Kumafa Mountains. The turquoise waters sculpting the karst limestone coast are renowned for the abundance and diversity of tropical fish species. Join your expedition team ashore discovering the unique plants and wildlife of the region before snorkelling among enormous colourful soft corals and a thousands strong cast from Finding Nemo attracted by the rich food source delivered via underwater channels and currents.

Day 12 - Triton Bay

Enjoy the unforgettable experience of swimming with the iconic Whale Sharks of Triton Bay. One of the best places in the world to snorkel with these gentle giants, we aim to visit the local fishermen's Bagans (handmade floating platforms) where these mega-fish (known to grow more than 12-metres in length), hopeful of catching some of the smaller fish escaping fishermen's nets, are known to congregate. This afternoon Heritage Adventurer drops anchor off Aiduma Island, one of the most remote islands in Indonesia and world-renowned underwater wonderland and dive site. Discover dazzling soft coral forests teeming colorful reef fish including dinner plate-sized Blue-ring and Six-bar Angelfish, and impressive red and white striped Lionfish, among others, on a snorkelling highlight.

Day 13 - Etna Bay

This morning we embark on an exploration of the seldom visited Etna Bay. Indenting the coastline of the Kaimana Regency and described by those who have visited as a "tropical fiord beneath mountains that rise abruptly from the sea", an authentic expedition adventure awaits. Local mythology claims that Indonesia's legendary Garuda bird and national emblem lives in these mountains. Join your expedition team as we explore this unknown terrain together.

Day 14 & 15 - Asmat Villages

Wild Earth Travel

Small Ships, Big Adventures

0800 945 3327 (within New Zealand) | +64 (0) 3 365 1355 | **1800 107 715** (within Australia)

info@wildearth-travel.com | wildearth-travel.com



Wild Earth Travel

Small Ships, Big Adventures

wildearth-travel.com

info@wildearth-travel.com

Ten thousand square miles of mangrove forest, bamboo, and sago palms have long sheltered the Asmat region from outsiders. At high tide, our ship enters the shallow channel of the Flamingo River to anchor near the village of Agats, the regional capital of the Asmat. A remote riverine world is revealed as Zodiacs carry you along narrow waterways lined with the entwined branches of thick mangrove forests, home to Torresian Imperial Pigeons, Sulphur-crested Cockatoos, and bright red lorikeets. As you make your way upstream, villagers - whooping and chanting in elaborate warrior gear and paint - paddle vigorously toward you in intricately carved canoes to escort you ashore where an enthusiastic welcome awaits. A walk along elevated wooden boardwalks leads to a cathedral with superb carvings, and museum with displays of ancestor poles, drums, body masks, shields, daggers, and skulls; a reminder that cannibalism and head-hunting was practiced by the ancestors of some villagers. Asmat woodcarvings are known for their powerful lines and coarse, expressive motifs, and are widely considered by collectors and scholars to be among the world's finest carvings and can be purchased directly from the village artisans.

Day 16 & 17 - At Sea

Relax on board after our adventures, join a lecture, update your photos/journal or watch the world go by from the Bridge with the Captain, in the Observation Lounge or from the poolside. Day 16 will see us farewelling Indonesia as we make our way to Papua New Guinea, while on Day 17 we will be navigating the maze of reefs and islands of the Torres Strait which links the Coral and Arafura Seas with the Gulf of Carpentaria with prime spots being the Observation Deck, Lounge and the Bridge.

Day 18 - Port Moresby, Papua New Guinea to Cairns, Australia

Arrive in Port Moresby, bustling gateway and capital of Papua New Guinea where village and urban life exist side-by-side. After breakfast, board your flight to Cairns, OR continue the adventure with us on Discover the Secrets of Melanesia. Note: During our voyage, circumstances may make it necessary or desirable to deviate from the proposed itinerary. This can include poor weather and opportunities for making unplanned excursions. Your Expedition Leader will keep you fully informed. This tour offers a variety of activities and excursions. Your personal interests will determine which of these you wish to join. Please note that some activities and excursions will run at similar times, and it will not be possible to participate in both. Accordingly, refunds for

excursions and missed landings are not available. Voyages are planned and scheduled pending final regulatory approval.

Please Note:

Itineraries are subject to change.

Wild Earth Travel

Small Ships, Big Adventures

0800 945 3327 (within New Zealand) | +64 (0) 3 365 1355 | **1800 107 715** (within Australia)

info@wildearth-travel.com | wildearth-travel.com



Wild Earth Travel

Small Ships, Big Adventures

wildearth-travel.com

info@wildearth-travel.com

YOUR SHIP: HERITAGE ADVENTURER

YOUR SHIP:	Heritage Adventurer
VESSEL TYPE:	Expedition Ship
LENGTH:	124 metres
PASSENGER CAPACITY:	140
BUILT/REFURBISHED:	1991

Heritage Adventurer is a true pioneering expedition vessel of exceptional pedigree. Often referred to as the 'Grande Dame of Polar Exploration' due to her celebrated history and refined design, she was purpose-built for adventure in 1991 at Finland's Rauma shipyard and specifically designed for Polar exploration. Setting a peerless standard in authentic expedition travel, Heritage Adventurer (formerly known as MS Hanseatic) combines the highest passenger ship ice-class rating (1A Super) with an impressive history of Polar exploration. Having held records for the most northern and southern Arctic and Antarctic navigations, and for traversing both the Northwest and Northeast Passages, makes Heritage Adventurer perfect for pioneering New Zealand-based Heritage Expeditions signature experiential expedition travel. Originally designed to accommodate 184 guests, Heritage Adventurer now welcomes just 140 expeditioners ensuring spacious, stylish and comfortable voyages, while a fleet of 14 Zodiacs ensures all guests are able to maximise their expedition adventure. Heritage Adventurer proudly continues our traditions of exceptional, personalised expedition experiences as Heritage Expeditions flagship.

Observation Lounge - One of the most celebrated and best-known features of Heritage Adventurer is the awe-inducing Observation Lounge, Library and Bar. Located on Deck 7 and perched directly above the Bridge, enjoy sweeping 270-degree views through floor to ceiling windows, perfect for wildlife spotting and quick access to the outer deck. Bring your binoculars to spot wildlife, observe the ever-changing landscape, write in your journal or relax with a book.

Observation Deck - Enjoy 360-degree views from the highest point on the ship. The Observation Deck sits above the Observation Lounge and provides exceptional outside viewing options. Stretching the full width of the vessel, this is the perfect spot to take in the surrounding land and seascapes. Perfect on a sunny day, recline in the comfortable sun loungers protected from the wind and elements and watch your voyage unfold.

The Bridge - No expedition is complete without visiting Heritage Adventurer's busy nerve centre. Located on Deck 6, Heritage Expeditions' Open Bridge Policy means you are welcome to observe the Captain and crew at work while enjoying some of the ship's best views. It's a fascinating place to learn about navigation and vessel operations, however please note the Bridge will be closed when departing or arriving at port.

Dining Room - Indulge in fine international cuisine from our talented chefs in the lavish surrounds of our Dining Room on Deck 4. Sensational 270-degree views provide a stunning backdrop to meals here along with an international wine list featuring many outstanding regional wines. With relaxed seating arrangements, all guests can enjoy dining in a single sitting from

Wild Earth Travel

Small Ships, Big Adventures

0800 945 3327 (within New Zealand) | +64 (0) 3 365 1355 | **1800 107 715** (within Australia)

info@wildearth-travel.com | **wildearth-travel.com**

Wild Earth Travel

Small Ships, Big Adventures

wildearth-travel.com

info@wildearth-travel.com

hearty breakfasts setting you up for the day's adventure to sumptuous lunches and multi-course evening dining.

Bistro - Simple fast and delicious meals and snacks are on offer in our relaxed Bistro on Deck 6. Perfect for early risers to enjoy tea, coffee and light breakfast options the Bistro provides great views and opens directly onto a covered and heated teak-deck outdoor dining area.

The Bar and Lounge - The social hub of Heritage Adventurer, the Bar and Lounge on Deck 5 features seating for all guests. Enjoy a beverage at the bar, sink into an armchair, relax on one of the many spacious loungers and watch the world go by through the panoramic windows or make new friends at the communal seating. This multi-tasking space also doubles as the location of daily briefings and evening recaps with the expedition team.

The Gym - Featuring spectacular ocean views, the well-equipped gym is adjacent to the pool, hot tub and sauna in Deck 7's wellbeing zone. Maintain your routine with an elliptical cross trainer, treadmill, rowing machine, stationary bikes, TRX as well as free weights, yoga mats and fitness balls. Towels are provided with change room and shower amenities nearby.

Sauna and Steam Room - True to her Nordic origins, Heritage Adventurer features a dry-heat Finnish sauna and European steam room on Deck 7. Perfect for warming up post Polar plunge or unwinding after a day's adventures, the sauna and steam room include change room facilities, showers and towels.

Swimming Pool and Hot Tub - Surrounded by relaxed teak seating including sun loungers, the open-air saltwater pool can be heated or chilled. Encased in glass the hot tub ensures all-weather use, perfect for those who like to relax with a view following a day of exploring.

Lectures and Presentations - Enjoy informative and entertaining lectures on history, biology, wildlife, and ecology in the comfort

of the Presentation Theatre. With state-of-the-art audio-visual equipment, our world-renowned expedition team will bring your adventure to life through interactive presentations and discussions.



discussions.

Wild Earth Travel

Small Ships, Big Adventures

0800 945 3327 (within New Zealand) | +64 (0) 3 365 1355 | **1800 107 715** (within Australia)

info@wildearth-travel.com | **wildearth-travel.com**

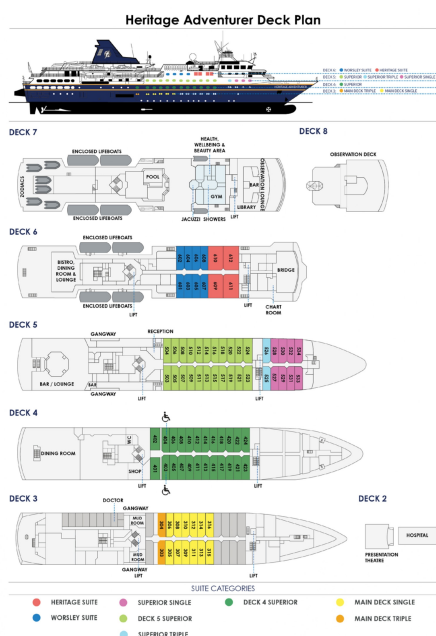
Wild Earth Travel

Small Ships, Big Adventures

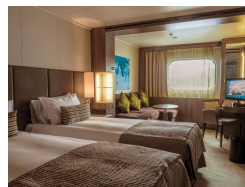
wildearth-travel.com

info@wildearth-travel.com

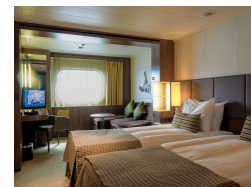
INSIDE YOUR SHIP



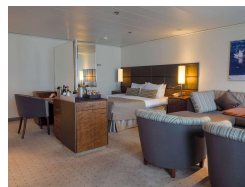
Deck 4 Superior



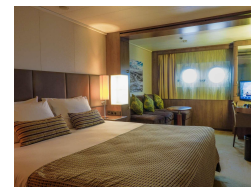
Deck 5 Superior



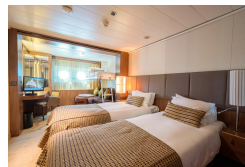
Heritage Suite



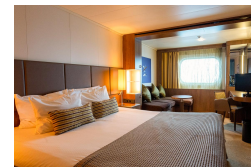
Main Deck Single



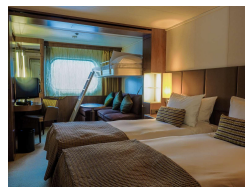
Main Deck Triple



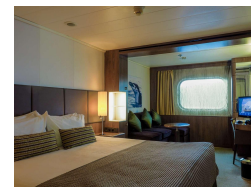
Superior Single



Superior Triple



Worsley Suite



Wild Earth Travel

Small Ships, Big Adventures

0800 945 3327 (within New Zealand) | +64 (0) 3 365 1355 | 1800 107 715 (within Australia)

info@wildearth-travel.com | wildearth-travel.com



PRICING

06-Oct-2026 to 23-Oct-2026

Main Deck Triple	18461 AUD pp
Superior Triple	18946 AUD pp
Deck 4 Superior	21024 AUD pp
Deck 5 Superior	22422 AUD pp
Main Deck Single	25457 AUD pp
Superior Single	27420 AUD pp
Worsley Suite	29069 AUD pp
Heritage Suite	33375 AUD pp



Wild Earth Travel

Small Ships, Big Adventures

wildearth-travel.com

info@wildearth-travel.com

SPECIAL OFFERS

Online prices reflect current special offers and may vary. This promotion is time - limited and subject to availability. Terms and conditions apply. For more information, please contact us.

Wild Earth Travel

Small Ships, Big Adventures

0800 945 3327 (within New Zealand) | +64 (0) 3 365 1355 | **1800 107 715** (within Australia)

info@wildearth-travel.com | **wildearth-travel.com**