

Wild Earth Travel

Small Ships, Big Adventures

wildearth-travel.com

info@wildearth-travel.com

INDONESIAN EXPLORER: DISCOVER PARADISE AMONGST INDONESIA'S LOST ISLANDS

Discover paradise on an authentic expedition through Indonesia's remote and little known tropical islands. Swim with the Whale Sharks in Kwatisore Bay, visit Komodo National Park, home to the famed Komodo Dragon, discover Jacques Cousteau's "underwater nirvana" Wakatobi National Park and explore the turquoise waters and rainbow corals of Raja Ampat as we traverse powdery white sand beaches and untamed jungles. During our voyage from Bali to Madang, including post cruise flight to Cairns, we have the opportunity to see Birds-of-paradise and many more endemic species, World War II relics and visit remote tribes and villages.

A true expedition voyage in every sense, our journey will explore Indonesia's rarely visited and little known biodiverse-rich jungle-capped islands scattered across pristine pellucid waters well beyond traditional tourist routes. Join us and discover a true paradise where untouched dense jungles home to some of the rarest flora and fauna on the planet meet crystalline tropical waters teeming with exotic marine life and some of the world's best coral reefs all wrapped in a land steeped in history and rich in culture and tradition.

Comprised of some 18,000 islands, this Southeast Asian archipelago's fascinating human history dates back almost 2 million years. European arrival saw Portuguese spice traders chasing the fragrant bounty of nutmeg and cloves in the 16th Century, this was followed by Dutch colonisation then Japanese occupation during World War II before Indonesia regained its independence in 1949.

While still a heavy hitter on the spice trading scene, Indonesia is now attracting attention for having one of the richest concentrations of flora and fauna on the planet. One of the world's 17 mega diverse countries, Indonesia is home to 2 of the planet's 25 biodiversity hotspots, 18 of the World Wildlife Fund's Global 200 ecoregions and 24 of BirdLife International's Endemic Bird Areas. Its dense forests, jungles, oceans and waterways we will be exploring boast more than 25,000 species of flowering plants (40 per cent of which are endemic), 1,592 bird species (430 of which are endemic and 114 considered extremely threatened), 1,051 reptile and amphibian species, 515 species of mammal and half of the world's fish species.

For botanists, birders and nature lovers alike, this expedition offers numerous opportunities to spot once-in-a-lifetime species and experience rare wildlife encounters on remote and unknown islands. This expedition includes the option to join a sea kayaking excursion with an expert guide. Kayakers are rewarded with tranquil, tropical settings and are a source of fascination to the locals who often paddle their canoes out to join them, and invite them back to their villages.

Wild Earth Travel

Small Ships, Big Adventures

0800 945 3327 (within New Zealand) | +64 (0) 3 365 1355 | **1800 107 715** (within Australia)

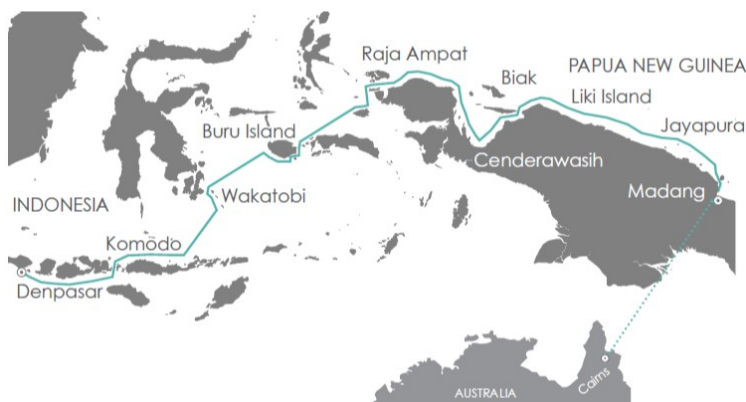
info@wildearth-travel.com | **wildearth-travel.com**

Wild Earth Travel

Small Ships, Big Adventures

wildearth-travel.com

info@wildearth-travel.com



East of its more famous sibling Lombok, mountainous Sumbawa Island blends laid back island life with spectacular volcanic ridges, terraced rice fields, tangled jungles and beautiful sandy beaches replete with stunning coral reefs and remote bays awaiting exploration. Historically divided between east (Bimanes speakers) and west (Sumbawanes speakers) this isolated island that time almost forgot juxtaposes luxurious mansions alongside old wooden huts, remote wilderness and traditional Adat law and lore. Today we will experience a number of time-honoured traditions and cultural encounters including meeting the creators of the famed intricate hand-woven ikat fabric, observing martial arts displays and ancient tribal rites for a truly authentic immersion in the local culture.

Day 4: Komodo National Park

A sanctuary for the giant monitor lizard, the Komodo Dragon, walk along a forested pathway to a viewing area for a closer look at these prehistoric reptiles which can grow up to 3 metres (10 ft) in length and weigh up to 135 kilograms (300 lbs). The surrounding forest is home to Timor Deer, the favourite prey of the dragons, as well as elegant Yellow-crested Cockatoos. Enjoy the first snorkelling excursion off splendid Pink Beach, with world-class experience often described as "swimming in an aquarium".

Day 5: Kodja Island

This morning we are welcomed by the stunning white sand beaches and turquoise waters of coral reef fringed Kodja Island. While excellent snorkelling and beachcombing are a given, hikers, photographers and birders will want to explore the dry forests home to an impressive number of birds and wildlife. Today is an authentic expedition day.

Day 6: Wakatobi National Park

r villages.

ITINERARY

Day 1: Denpasar, Bali

For centuries Bali has captivated the imagination of artists, writers, and travellers with its landscapes of emerald terraced rice fields back-dropped by the sacred volcano of Mt. Agung. Make your way to your hotel where our group will spend the first night of the expedition. This evening meet your fellow voyagers and expedition guides over dinner at the hotel.

Day 2: Denpasar

Enjoy breakfast followed by time to explore the cultural and historical delights of Bali's capital. This afternoon transfer to Heritage Adventurer where your Captain and Expedition Team will welcome you aboard as we set sail for Sumbawa Island.

Day 3: Sumbawa Island

Wild Earth Travel

Small Ships, Big Adventures

0800 945 3327 (within New Zealand) | +64 (0) 3 365 1355 | 1800 107 715 (within Australia)

info@wildearth-travel.com | wildearth-travel.com



Wild Earth Travel

Small Ships, Big Adventures

wildearth-travel.com

info@wildearth-travel.com

Day 9: Misool Island

Famously described by legendary underwater explorer and conservationist Jacques Cousteau as an "underwater nirvana", Wakatobi is a cetacean highway and home to breathtaking coral walls. Today's snorkel excursions reveal an incredible array of marine reef inhabitants; underwater photographers will appreciate a bizarre macro world among corals as shallow as 20 feet. Highlights include colourful frogfish, octopus, marbled snake eels, cockatoo wasp fish, flying gurnards, multitudes of crab species, and dazzling anemones.

Day 7: Buru Island

Fascinating and seldom visited, Buru Island is located at the boundary between the bio-geographic zones of Australia and Asia. A high proportion of the species of birds and mammals that occur here are found nowhere else with 10 endemic bird species and 4 endemic mammals as well as a number of near-endemic species. This morning we will explore these remote shores together with our expert naturalists and guides. Enjoy opportunities to explore the forests in search of wildlife and many of the endemic species and enjoy the hospitality of local communities during village visits.

Day 8: Seram Island

One of Indonesia's relatively undiscovered gems, Seram Island seamlessly blends stunning tropical island aesthetics with biologically rich and rare flora and fauna of the Wallacea region at the crossroads of Asia and Australasia. In addition to having Indonesia's deepest cave, Hatu Saka, and the world's longest underground river, Sapalewa; 6 of Seram Island's 28 mammals and 33 of its more than 213 bird species are endemic or near endemic. Our explorations here could include venturing into the jungle to look for the endemic Salmon-crested/Seram or Moluccan Cockatoo (the largest of the white cockatoos), Thrush, Oriole, Honeyeater, Myzomela and Friarbird, and visiting a stilt house village where life continues unchanged. Though headhunting is no longer practised, traditional weapons including bow and arrow are still used for hunting.

Part of the Sultanate of Tidore during the spice trade wars, Misool Island is the second largest island in the aquatic wonderland that is Raja Ampat (aka Four Kings Islands, named after its four main islands) and our introduction to this stunning marine environment. Rich in heritage, it was colonised by the Dutch, however still maintains its cultural essence and traditional ways of life with indigenous constructions, folk dance and respect for nature prevailing. On land, discover caves hidden among verdant forests featuring rock art dating back more than 5,000 years, while under its protected waters Dugong, Bumphead Parrotfish, Clownfish, Manta Rays, Ghost Pipefish, Harlequin Shrimp, Pygmy Seahorse and more can be found among spectacular coral gardens and sea-cave cemeteries. Over the course of the day we aim to explore the labyrinth of caves and passages, and hike up to the viewing platforms to enjoy the spectacular vistas Raja Ampat is rightly famous for.

Days 10-11: Raja Ampat

Lapped by stunning turquoise waters, Raja Ampat's collection of 1,500 tiny, jungle-cloaked islands are among Indonesia's most beautiful. We plan to spend 2 days exploring the bounty of rainbow corals, shoals of multi-coloured fish, intriguing ocean-carved limestone formations and jungles of this tropical paradise of forgotten islands. Believed to contain the most biodiverse marine habitat on the planet, the waters surrounding Raja Ampat are home to 600 species of hard coral and 1,200 types of reef fish and make for exceptional snorkelling and Zodiac cruising. On land, spotting the brilliant Wilson's Bird-of-paradise and Red Bird-of-paradise will be high on our agenda here, with early morning visits planned ensuring the very best opportunity for all to see these remarkable birds in their natural habitat and, hopefully, witness their rarely-seen mating dance around their 'lekking' trees. Other activities could include beachcombing, visiting villages and engaging in cultural exchanges with locals and forest walks.

Day 12: Manokwari and Arfak Mountains

Wild Earth Travel

Small Ships, Big Adventures

0800 945 3327 (within New Zealand) | +64 (0) 3 365 1355 | **1800 107 715** (within Australia)

info@wildearth-travel.com | **wildearth-travel.com**



Wild Earth Travel

Small Ships, Big Adventures

wildearth-travel.com

info@wildearth-travel.com

snorkellers and beachcombers.

Day 15: Liki Island

Enjoy a warm welcome on Liki Island, part of the Koemamba Islands in formerly Dutch New Guinea, where villagers share local customs and traditions along with some of the island's culinary delights. Explore the forest looking for wildlife on a nature walk, or snorkel along the edge of the abundant coral reef on this charming and rarely visited island.

Day 16: Jayapura

The peaceful paradise of Lake Sentani, the glittering freshwater lake reflecting the steep, verdant mountains in the Cyclops Strict Nature Reserve of Papua's capital Jayapura, is renowned for its famous artifacts, traditional motifs, pottery, woodworking and bark paintings, and is our destination following an early morning arrival. We will journey to the lake's edge before enlisting traditional longboats, passing stilt houses, as we navigate its many islands. Experience local culture in the form of dance and artists at work making bark paintings and bride money before returning to the ship for lunch and sailing towards Vanimo and Papua New Guinea for our International arrival into Papua New Guinea.

Day 17: Sepik River, Papua New Guinea

We have allowed plenty of time to fully appreciate this remarkable river, its birds, wildlife and the people who call it home. The Sepik River, the longest in Papua New Guinea, flows from the highlands to the Bismarck Sea. It is a rich arterial river that has fostered great traditional artists. We plan to explore the river by Zodiac, following tributaries and channels in search of local wildlife. Enjoy a warm welcome at Kopar Village where we will experience village life and their traditional Dragon Dance. The world-renowned artists of the region travel long distances to meet the ship and there is the opportunity to purchase unique carvings and more directly from them.

Located at the top of the Bird's Head Peninsula and surrounded by lush rolling hills and impressive spine of the Arfak Mountains, Manokwari is the capital of West Papua. Options here include an early rise travelling high into the Arfak Mountains to the Pegunungan Arfak Nature Reserve exploring the higher elevations and misty tropical montane rainforests with their exceptional suite of endemic plants, animals and birds. During our journey we will be on the lookout for the Western Parotia and Vogelkop Bowerbird, and visit the viewing hides for a once-in-a-lifetime opportunity to observe the Magnificent Bird-of-paradise, among the region's 320 bird species. Alternatively enjoy a sleep in and explore the fascinating town of Manokwari, home to more than 24 different tribal groups.

Day 13: Cenderawasih Marine Park

Enjoy the unforgettable experience of swimming with the iconic Whale Sharks of Kwatisore Bay in Cenderawasih Marine Park. One of the best places in the world to snorkel with these gentle giants, we aim to visit the local fishermen's Bagans (handmade floating platforms) where these mega-fish (known to grow more than 12-metres in length), hopeful of catching some of the smaller fish escaping fishermen's nets, are known to congregate. This spectacular 15,000-square-kilometre marine park is also home to some of the finest coral reef examples in the world and 18 tropical islands, which we will explore, where 209 species of fish and 4 species of turtle can be seen. We also plan to visit a village where the locals live by a unique mix of traditional, Dutch and modern influences.

Day 14: Biak & Rusbasbedas Islands

The seldom-visited Biak Island in the Schouten Islands archipelago of Cenderawasih Bay boasts the highest endemic biodiversity in Papua including 17 endemic birds. Among the species we may encounter are the Long-tailed Honey-buzzard, Red-capped Flowerpecker, Yellow-bibbed Fruit-dove, Geelvink Imperial-pigeon, Biak Black Flycatcher and Numfor Paradise-kingfisher and Leaf Warbler. In the afternoon we plan to sail to the pristine and isolated Rusbasbedas Island with its white sand beaches, sheer drop-offs and enormous corals teeming with brightly coloured fish make it paradise for

Wild Earth Travel

Small Ships, Big Adventures

0800 945 3327 (within New Zealand) | +64 (0) 3 365 1355 | **1800 107 715** (within Australia)

info@wildearth-travel.com | wildearth-travel.com



Wild Earth Travel

Small Ships, Big Adventures

wildearth-travel.com

info@wildearth-travel.com

Day 18: Madang - Cairns

The self appointed 'Prettiest Town in the South Pacific', Madang is bound by lush rainforest, calm blue waters studded with volcanic islands, Tupira's supreme surf break, flourishing coral gardens and rich history. For those disembarking, a flight to Cairns will conclude your voyage, OR continue the adventure with us on Discover the Secrets of Melanesia. Note: During our voyage, circumstances may make it necessary or desirable to deviate from the proposed itinerary. This can include poor weather and/or opportunities for making unplanned excursions. Your Expedition Leader will keep you fully informed.

Please note:

Itineraries are subject to change.

Wild Earth Travel

Small Ships, Big Adventures

0800 945 3327 (within New Zealand) | +64 (0) 3 365 1355 | **1800 107 715** (within Australia)

info@wildearth-travel.com | **wildearth-travel.com**



Wild Earth Travel

Small Ships, Big Adventures

wildearth-travel.com

info@wildearth-travel.com

YOUR SHIP: HERITAGE ADVENTURER

YOUR SHIP:	Heritage Adventurer
VESSEL TYPE:	Expedition Ship
LENGTH:	124 metres
PASSENGER CAPACITY:	140
BUILT/REFURBISHED:	1991

Heritage Adventurer is a true pioneering expedition vessel of exceptional pedigree. Often referred to as the 'Grande Dame of Polar Exploration' due to her celebrated history and refined design, she was purpose-built for adventure in 1991 at Finland's Rauma shipyard and specifically designed for Polar exploration. Setting a peerless standard in authentic expedition travel, Heritage Adventurer (formerly known as MS Hanseatic) combines the highest passenger ship ice-class rating (1A Super) with an impressive history of Polar exploration. Having held records for the most northern and southern Arctic and Antarctic navigations, and for traversing both the Northwest and Northeast Passages, makes Heritage Adventurer perfect for pioneering New Zealand-based Heritage Expeditions signature experiential expedition travel. Originally designed to accommodate 184 guests, Heritage Adventurer now welcomes just 140 expeditioners ensuring spacious, stylish and comfortable voyages, while a fleet of 14 Zodiacs ensures all guests are able to maximise their expedition adventure. Heritage Adventurer proudly continues our traditions of exceptional, personalised expedition experiences as Heritage Expeditions flagship.

Observation Lounge - One of the most celebrated and best-known features of Heritage Adventurer is the awe-inducing Observation Lounge, Library and Bar. Located on Deck 7 and perched directly above the Bridge, enjoy sweeping 270-degree views through floor to ceiling windows, perfect for wildlife spotting and quick access to the outer deck. Bring your binoculars to spot wildlife, observe the ever-changing landscape, write in your journal or relax with a book.

Observation Deck - Enjoy 360-degree views from the highest point on the ship. The Observation Deck sits above the Observation Lounge and provides exceptional outside viewing options. Stretching the full width of the vessel, this is the perfect spot to take in the surrounding land and seascapes. Perfect on a sunny day, recline in the comfortable sun loungers protected from the wind and elements and watch your voyage unfold.

The Bridge - No expedition is complete without visiting Heritage Adventurer's busy nerve centre. Located on Deck 6, Heritage Expeditions' Open Bridge Policy means you are welcome to observe the Captain and crew at work while enjoying some of the ship's best views. It's a fascinating place to learn about navigation and vessel operations, however please note the Bridge will be closed when departing or arriving at port.

Dining Room - Indulge in fine international cuisine from our talented chefs in the lavish surrounds of our Dining Room on Deck 4. Sensational 270-degree views provide a stunning backdrop to meals here along with an international wine list featuring many outstanding regional wines. With relaxed seating arrangements, all guests can enjoy dining in a single sitting from

Wild Earth Travel

Small Ships, Big Adventures

0800 945 3327 (within New Zealand) | +64 (0) 3 365 1355 | **1800 107 715** (within Australia)

info@wildearth-travel.com | **wildearth-travel.com**

Wild Earth Travel

Small Ships, Big Adventures

wildearth-travel.com

info@wildearth-travel.com

hearty breakfasts setting you up for the day's adventure to sumptuous lunches and multi-course evening dining.

Bistro - Simple fast and delicious meals and snacks are on offer in our relaxed Bistro on Deck 6. Perfect for early risers to enjoy tea, coffee and light breakfast options the Bistro provides great views and opens directly onto a covered and heated teak-deck outdoor dining area.

The Bar and Lounge - The social hub of Heritage Adventurer, the Bar and Lounge on Deck 5 features seating for all guests. Enjoy a beverage at the bar, sink into an armchair, relax on one of the many spacious loungers and watch the world go by through the panoramic windows or make new friends at the communal seating. This multi-tasking space also doubles as the location of daily briefings and evening recaps with the expedition team.

The Gym - Featuring spectacular ocean views, the well-equipped gym is adjacent to the pool, hot tub and sauna in Deck 7's wellbeing zone. Maintain your routine with an elliptical cross trainer, treadmill, rowing machine, stationary bikes, TRX as well as free weights, yoga mats and fitness balls. Towels are provided with change room and shower amenities nearby.

Sauna and Steam Room - True to her Nordic origins, Heritage Adventurer features a dry-heat Finnish sauna and European steam room on Deck 7. Perfect for warming up post Polar plunge or unwinding after a day's adventures, the sauna and steam room include change room facilities, showers and towels.

Swimming Pool and Hot Tub - Surrounded by relaxed teak seating including sun loungers, the open-air saltwater pool can be heated or chilled. Encased in glass the hot tub ensures all-weather use, perfect for those who like to relax with a view following a day of exploring.

Lectures and Presentations - Enjoy informative and entertaining lectures on history, biology, wildlife, and ecology in the comfort

of the Presentation Theatre. With state-of-the-art audio-visual equipment, our world-renowned expedition team will bring your adventure to life through interactive presentations and discussions.



discussions.

Wild Earth Travel

Small Ships, Big Adventures

0800 945 3327 (within New Zealand) | +64 (0) 3 365 1355 | **1800 107 715** (within Australia)

info@wildearth-travel.com | **wildearth-travel.com**

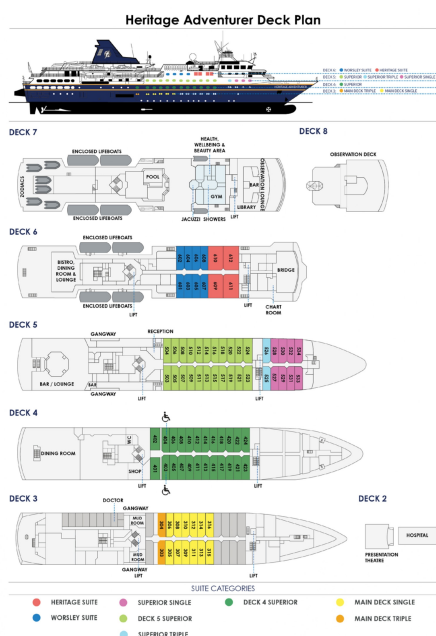
Wild Earth Travel

Small Ships, Big Adventures

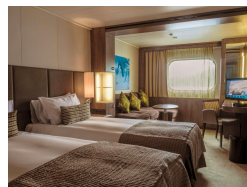
wildearth-travel.com

info@wildearth-travel.com

INSIDE YOUR SHIP



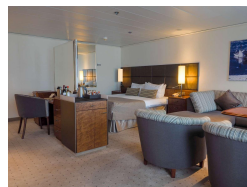
Deck 4 Superior



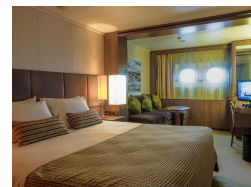
Deck 5 Superior



Heritage Suite



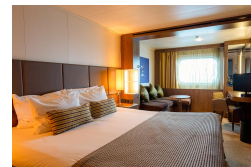
Main Deck Single



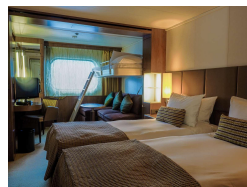
Main Deck Triple



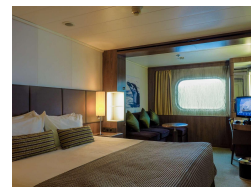
Superior Single



Superior Triple



Worsley Suite



Wild Earth Travel

Small Ships, Big Adventures

0800 945 3327 (within New Zealand) | +64 (0) 3 365 1355 | 1800 107 715 (within Australia)

info@wildearth-travel.com | wildearth-travel.com



Wild Earth Travel

Small Ships, Big Adventures

wildearth-travel.com

info@wildearth-travel.com

PRICING

29-Sep-2025 to 16-Oct-2025

Main Deck Triple	18350 AUD pp
Superior Triple	19565 AUD pp
Deck 4 Superior	21450 AUD pp
Deck 5 Superior	22735 AUD pp
Main Deck Single	28425 AUD pp
Superior Single	29350 AUD pp
Worsley Suite	29350 AUD pp
Heritage Suite	41000 AUD pp

Wild Earth Travel

Small Ships, Big Adventures

0800 945 3327 (within New Zealand) | +64 (0) 3 365 1355 | **1800 107 715** (within Australia)

info@wildearth-travel.com | **wildearth-travel.com**



Wild Earth Travel

Small Ships, Big Adventures

wildearth-travel.com

info@wildearth-travel.com

SPECIAL OFFERS

Online prices reflect current special offers and may vary. This promotion is time - limited and subject to availability. Terms and conditions apply. For more information, please contact us.

Wild Earth Travel

Small Ships, Big Adventures

0800 945 3327 (within New Zealand) | +64 (0) 3 365 1355 | **1800 107 715** (within Australia)

info@wildearth-travel.com | **wildearth-travel.com**