

Wild Earth Travel

Small Ships, Big Adventures

wildearth-travel.com

info@wildearth-travel.com

IN THE WAKE OF WALLACE: INDONESIA & BORNEO CRUISE

Welcome to Aurora Expeditions' In The Wake of Wallace: Indonesia & Borneo voyage.

Embark on an extraordinary voyage across the heart of the Indonesian Archipelago to Singapore, a region of unparalleled natural beauty and rich cultural heritage. This 16-day expedition invites you to explore a tapestry of islands, each offering unique treasures to discover. From the pristine waters of Raja Ampat to the ancient temples of Java and the orangutan of Central Kalimantan, this journey promises a fusion of adventure, culture, and wildlife experiences. Traverse the mythical Wallace Line, an invisible boundary used to mark the difference between species found in Australia and Southeast Asia. Marvel at the unique biodiversity that flourishes on either side, a testament to the archipelago's extraordinary geographical history. This expedition will immerse you in local cultures, bring you face-to-face with iconic wildlife, and reveal the raw beauty of nature. Prepare to be captivated by the diversity and charm of Indonesia, a land where every island holds a story waiting to be discovered.



ITINERARY

Day 1 Arrive in Denpasar

Having made your way to Denpasar, you will be met by a representative of Aurora Expeditions and transferred to our group hotel. Upon arrival at your included hotel, please visit the welcome desk where you can collect your luggage cabin tags and speak with our ground operations team, who may have information to share with you about pre-embarkation or to provide you with

Wild Earth Travel

Small Ships, Big Adventures

0800 945 3327 (within New Zealand) | +64 (0) 3 365 1355 | **1800 107 715** (within Australia)

info@wildearth-travel.com | wildearth-travel.com



Wild Earth Travel

Small Ships, Big Adventures

wildearth-travel.com

info@wildearth-travel.com

information about where to dine, withdraw cash or purchase last minute items from a local pharmacy or supermarket.

The remainder of your time is at leisure. All meals today are at your own expense.

Accommodation: Bali Hotel (to be confirmed)

Day 2 Fly to Sorong, embarkation

This morning, please ensure your cabin luggage is fitted with cabin tags clearly labelled with your name and cabin number. Any valuables or personal items should be kept on you throughout the day. After breakfast at the hotel, we board a morning charter flight to Sorong, where our vessel the Greg Mortimer awaits.

Transfer to the port for embarkation. You will have time to settle into your cabin before our important briefings begin. Enjoy the thrill of departure as we 'throw the lines' and set sail for Raja Ampat. Meet your Expedition Team and crew at the Captain's Welcome Dinner.

Day 3 Misool, Raja Ampat

Located in the 'Coral Triangle,' Raja Ampat archipelago has been described as a marine 'species factory,' and a Mission Blue Hope Spot. Believed to contain the most biodiverse marine habitat on the planet, the waters surrounding Raja Ampat are home to 600 species of hard coral and 1,500 types of fish - more than anywhere else in the world - which makes for exceptional diving and snorkelling experience.

Misool, a pristine corner of Raja Ampat, is renowned for its breathtaking natural beauty and extraordinary marine biodiversity. Established in 2005, the Misool Marine Reserve safeguards a vast 300,000-acre expanse, protecting it from destructive fishing practices. This pioneering conservation effort has yielded remarkable results. A scientific study between 2007 and 2013 revealed a staggering 250% increase in fish biomass within the reserve, with some areas experiencing a phenomenal 600% recovery. This extraordinary transformation underscores the power of effective marine conservation.

Beyond its ecological significance, Misool offers unparalleled opportunities for exploration and adventure. Relax in the crystal-clear waters, teeming with vibrant coral reefs and diverse marine life. Hike to the summit of Dafalen Peak for breathtaking panoramic views or discover the island's rich cultural heritage through ancient rock art sites.

Day 4 Buru Island & Fogi Island

In Buru Island, your adventure begins with a Zodiac ride to Tomahu Island, where a warm cultural welcome awaits. Explore the nearby Pasir Putih village, immersing yourself in the local way of life. Later, discover the underwater wonderland of Fogi Island. Snorkelers and divers can marvel at the vibrant coral reefs teeming with marine life, including turtles, seahorses, and a dazzling array of fish. Kayakers can paddle through picturesque waterways, surrounded by lush mangroves. For those seeking relaxation, unwind on the pristine beaches, soak up the sun, and explore the island's natural beauty. After lunch, embark on another adventure, whether it's beach time, snorkelling, or exploring a different island.

Day 5 Wakatobi National Park, Southeast Sulawesi

Wakatobi, a UNESCO-protected marine paradise, boasts an extraordinary array of marine life. Home to 750 of the world's 850 coral species and 942 fish species, this archipelago offers unparalleled diving and snorkelling experiences. Explore the vast coral reefs, teeming with vibrant colours and exotic creatures. For those who prefer land-based adventures, Hoga Island offers a serene escape. Embark on a guided nature walk to discover the island's unique flora and fauna, or simply relax on the pristine beaches. Birdwatchers can explore the island in search of resident and migratory birdlife.

Day 6 Taka Bonerate National Park, Flores Sea

Taka Bonerate National Park, located south of Sulawesi, is a marine paradise

Wild Earth Travel

Small Ships, Big Adventures

0800 945 3327 (within New Zealand) | +64 (0) 3 365 1355 | **1800 107 715** (within Australia)

info@wildearth-travel.com | wildearth-travel.com



Wild Earth Travel

Small Ships, Big Adventures

wildearth-travel.com

info@wildearth-travel.com

renowned for its exceptional biodiversity. This vast atoll system, the third largest in the world, boasts crystal-clear waters teeming with life. Explore vibrant coral reefs, home to a dazzling array of fish species. Tinabo Island, the park's heart, offers a glimpse into local life and opportunities to contribute to conservation efforts through tree planting, coral transplantation, or turtle release. For nature enthusiasts, guided walks reveal the island's unique flora and fauna, while birdwatchers can spot a variety of avian species. Beyond the island, the underwater world beckons with its diverse ecosystems, from barrier reefs to steep drop-offs.

Days 7-8 UNESCO World Heritage Komodo National Park

Komodo National Park, established in 1980, safeguards the iconic Komodo dragon and its habitat. These prehistoric creatures, among the world's largest lizards, inhabit Komodo Island and neighbouring islets. Located in Indonesia's Wallace Region, a global conservation priority, the park is a natural treasure trove.

Encounter the Komodo dragon on a guided walk through open woodland, observing these magnificent creatures in their natural environment. Alternatively, explore the ranger station or discover the island's rich birdlife. Pink Beach, renowned for its unique rosy hue, is a highlight. Composed of crushed coral, this stunning stretch of coast offers relaxation, snorkelling, and breathtaking views.

Gili Lawa Island is another gem within the park. Dive or snorkel in the underwater world, teeming with vibrant coral and marine life. Relax on pristine beaches or embark on a scenic Zodiac cruise to explore hidden coves. Join our expedition team for an unforgettable encounter at Manta Alley - the thrill of encountering majestic manta rays in their natural habitat. If sea conditions permit, we'll explore other nearby reefs, offering diverse snorkelling opportunities. Alternatively, relax on a pristine beach, soaking up the sun and enjoying the tranquil atmosphere.

Day 9 Saleh Bay, Sumbawa Besar

Saleh Bay, nestled on the island of Sumbawa, is a hidden gem that promises an opportunity of a lifetime. This expansive body of water is renowned for its

pristine marine environment and as a haven for one of the ocean's most majestic creatures: the whale shark.

Saleh Bay is characterised by its calm waters and rich biodiversity, making it an ideal habitat for a variety of marine life. The surrounding landscape is a picturesque blend of lush greenery and sandy beaches, offering a serene backdrop to your adventure.

The highlight of your visit will undoubtedly be the opportunity to snorkel with whale sharks. These gentle giants, the largest fish in the world, congregate in Saleh Bay due to the abundant food supply provided by local fishing activities. Snorkelling alongside these peaceful creatures is an experience that will leave you awe-inspired. As you glide through the water, you'll be captivated by their immense size and graceful movements.

It's crucial to remember that whale sharks are protected species. Your expedition will adhere to strict guidelines to ensure minimal disturbance to these magnificent animals. By observing these guidelines and maintaining a respectful distance, you can contribute to their conservation while enjoying an unforgettable encounter.

While sightings are never guaranteed, the chance to encounter these majestic creatures in such pristine waters is truly unforgettable. The experience of sharing the ocean with such an extraordinary creature is a privilege that will stay with you long after your journey ends.

Day 10 At Sea

Take time to unwind on the sea crossing to Semarang. Enjoy informative talks from our team of experts, get to know your fellow expeditioners, stay active in the gym or treat yourself to a massage in the wellness centre.

Day 11 Semarang for Borobudur Temple, Central Java

Semarang, a bustling port city, offers a captivating blend of Javanese, Chinese, and Dutch influences. Its colonial architecture, vibrant markets, and delectable cuisine make it a fascinating destination. However, the allure of Central Java extends beyond the city limits. Borobudur, a world-renowned Buddhist temple

Wild Earth Travel

Small Ships, Big Adventures

0800 945 3327 (within New Zealand) | +64 (0) 3 365 1355 | **1800 107 715** (within Australia)

info@wildearth-travel.com | **wildearth-travel.com**



Wild Earth Travel

Small Ships, Big Adventures

wildearth-travel.com

info@wildearth-travel.com

and a UNESCO World Heritage Site, is an awe-inspiring monument, and a testament to the architectural brilliance of the Sailendra Dynasty. Its intricate carvings and serene atmosphere offer a spiritual and historical experience like no other.

The journey from Semarang to Borobudur is a picturesque adventure. As you venture into the heart of Central Java, you'll be greeted by rolling hills, emerald rice paddies, and charming villages. This idyllic countryside provides a tranquil escape from the city's hustle and bustle. Approaching Borobudur, the landscape transforms into a lush, tropical paradise. The majestic temple emerges from the greenery, a breathtaking sight that will leave you in awe.

Spend the afternoon exploring the temple's grounds, enjoying its serene atmosphere, and gaining insights into its rich history.

Day 12 At Sea & Kumai, Central Kalimantan, Borneo

In the late afternoon we arrive at the heart of Central Kalimantan, Kumai. As your expedition vessel arrives, you'll be greeted by the lush tapestry of Borneo's rainforest. This evening, experience the magic of the night as you glide through the tranquil waters of the Sekonyer River. This enchanting nocturnal adventure offers a glimpse into the hidden world of the Borneo rainforest. Keep a watchful eye for elusive creatures as you navigate the river. The rhythmic symphony of the jungle, punctuated by the twinkling lights of fireflies among the nipa palms, creates an unforgettable ambiance.

Day 13-14 Kumai & At Sea

Embark on an unforgettable adventure through the lush rainforests of Tanjung Puting National Park. This iconic reserve is home to a diverse array of wildlife, most notably the endangered orangutan. Cruise along the meandering Sekonyer River aboard a traditional Klotok houseboat, immersing yourself in the heart of Borneo's wilderness. Encounter proboscis monkeys, gibbons, and a kaleidoscope of birdlife as you navigate through the dense vegetation.

Visit the renowned Pondok Tanggui Rehabilitation Centre, where you'll have the extraordinary opportunity to witness orangutans in their natural habitat. Learn about the park's vital conservation efforts and the dedicated work to protect

these magnificent creatures. Continue your journey to Pesalat Conservation Education Centre to deepen your understanding of the challenges faced by the park.

Conclude your time in Kumai with a morning visit to Tanjung Harapan, where you can observe orangutans during their feeding. This awe-inspiring experience will leave you with a profound appreciation for the delicate balance of nature and the importance of conservation. Say farewell to Borneo and set sail for Singapore, enjoying an afternoon onboard.

Day 15 At Sea

Enjoy the sea crossing to Singapore. Engage in informative talks from our team of experts, get to know your fellow expeditioners, stay active in the gym or treat yourself to a massage in the wellness centre.

Day 16 Disembark in Singapore

Disembark in the early morning and bid a fond farewell to fellow travellers before a transfer to the airport to continue your journey.

Please Note:

Itineraries are subject to change.

Wild Earth Travel

Small Ships, Big Adventures

0800 945 3327 (within New Zealand) | +64 (0) 3 365 1355 | **1800 107 715** (within Australia)

info@wildearth-travel.com | **wildearth-travel.com**

Wild Earth Travel

Small Ships, Big Adventures

wildearth-travel.com

info@wildearth-travel.com

YOUR SHIP: GREG MORTIMER

YOUR SHIP:	Greg Mortimer
VESSEL TYPE:	Expedition
LENGTH:	104 metres
PASSENGER CAPACITY:	132
BUILT/REFURBISHED:	2019

Purpose-built for polar expeditions, the Greg Mortimer combines over 25 years of expedition experience with cutting-edge nautical design. With a capacity of just 132 passengers, the ship offers an intimate, comfortable base for exploring the world's most remote regions while maintaining a focus on multiple landings, flexible itineraries, and a family-like atmosphere.

Designed with the revolutionary ULSTEIN X-BOW™, the ship handles rough seas with ease, offering a smoother ride and lower environmental impact. Hydraulic viewing platforms on Deck 5 provide unobstructed views of wildlife, while dedicated Zodiac launching areas make landings fast and efficient. The ship carries 15 Zodiacs for up to three daily excursions.

For adventurers, a spacious activity platform supports kayaking, climbing, diving and more, with quick gear access via the mudroom and drying areas. The ship is also Polar Code 6 compliant and features advanced safety systems, including backup propulsion and a fully equipped medical centre.

Onboard comforts include large observation decks, a 180° lounge, open bridge policy, and a well-stocked library. Enjoy family-style meals with complimentary drinks, and relax at the

Wellness Centre with a gym, spa, sauna, and massage services. Daily expert-led lectures enrich your journey with insights into nature, wildlife, and local cultures.

The Greg Mortimer offers a modern, safe, and environmentally conscious way to explore the polar regions - with all the comfort and spirit of true adventure.



adventure.

Wild Earth Travel

Small Ships, Big Adventures

0800 945 3327 (within New Zealand) | +64 (0) 3 365 1355 | **1800 107 715** (within Australia)

info@wildearth-travel.com | **wildearth-travel.com**

Wild Earth Travel

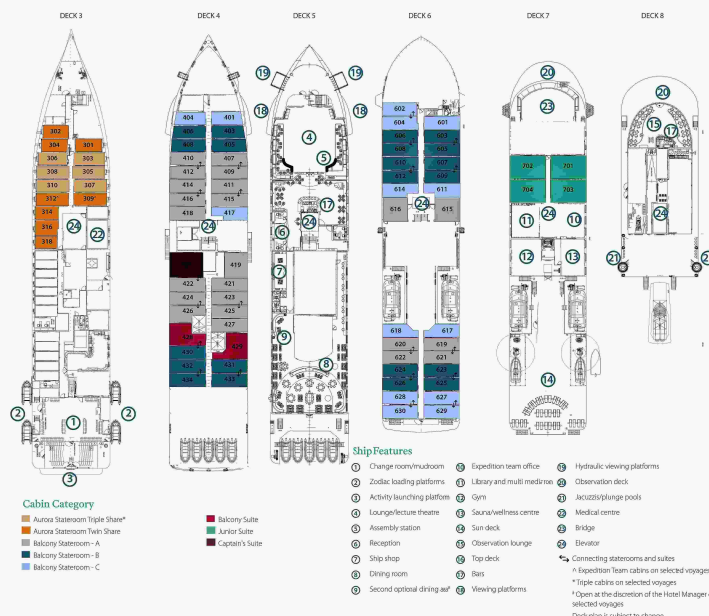
Small Ships, Big Adventures

wildearth-travel.com

info@wildearth-travel.com

INSIDE YOUR SHIP

Deck plan - Greg Mortimer



Aurora Stateroom Triple



Balcony Stateroom - A



Balcony Stateroom - B



Balcony Stateroom - C



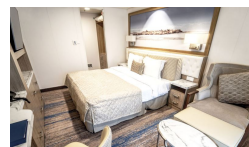
Balcony Stateroom Superior



Captain's Suite



Junior Suite



Wild Earth Travel

Small Ships, Big Adventures

0800 945 3327 (within New Zealand) | +64 (0) 3 365 1355 | 1800 107 715 (within Australia)

info@wildearth-travel.com | wildearth-travel.com

Wild Earth Travel

Small Ships, Big Adventures

wildearth-travel.com

info@wildearth-travel.com

PRICING

24-Oct-2026 to 08-Nov-2026

Aurora Stateroom Triple	25695 AUD pp
Balcony Stateroom - C	28695 AUD pp
Balcony Stateroom - B	30195 AUD pp
Balcony Stateroom - A	32495 AUD pp
Balcony Stateroom Superior	35495 AUD pp
Junior Suite	44495 AUD pp
Captain's Suite	52795 AUD pp

11-Nov-2026 to 26-Nov-2026

Aurora Stateroom Triple	25695 AUD pp
Balcony Stateroom - C	28695 AUD pp
Balcony Stateroom - B	30195 AUD pp
Balcony Stateroom - A	32495 AUD pp
Balcony Stateroom Superior	35495 AUD pp
Junior Suite	44495 AUD pp
Captain's Suite	52795 AUD pp