

Wild Earth Travel

Small Ships, Big Adventures

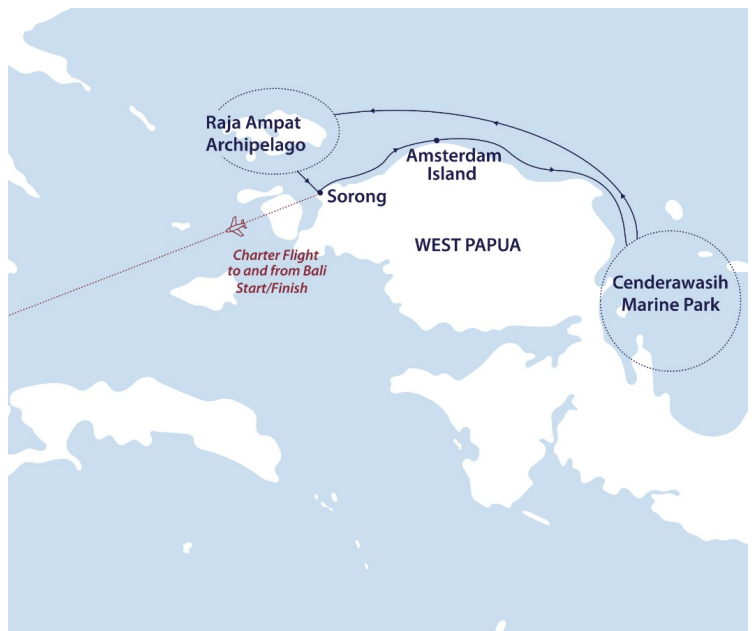
wildearth-travel.com

info@wildearth-travel.com

IDYLLIC RAJA AMPAT & CENDERAWASIH BAY EXPEDITION CRUISE

Welcome to Aurora Expeditions' Idyllic Raja Ampat & Cenderawasih Bay voyage.

Uncover a hidden world of natural wonder on this unique coastal expedition. Journey through the pristine waters of Cenderawasih Bay, a sanctuary teeming with diverse marine life, including the gentle giants of the sea. Explore the remote beauty of Raja Ampat, a breathtaking archipelago renowned for its otherworldly landscapes and unparalleled biodiversity. Immerse yourself in the rich tapestry of local cultures, from the warm hospitality of Amsterdam Island to the ancient traditions of the region. Our expert guides will lead you on unforgettable adventures, from snorkeling alongside majestic whale sharks to trekking through lush rainforests. Discover hidden coves, encounter exotic birdlife, and create lifelong memories as you explore the heart of Indonesia's last frontier. This is your chance to connect with nature and culture on a profound level.



ITINERARY

Day 1 Arrive in Denpasar

Having made your way to Denpasar, you will be met by a representative of Aurora Expeditions and transferred to our group hotel. Upon arrival at your included hotel, please visit the welcome desk where you can collect your luggage cabin tags and speak with our ground operations team, who may have information to share with you about pre-embarkation or to provide you with information about where to dine, withdraw cash or purchase last minute items from a local pharmacy or supermarket.

The remainder of your time is at leisure. All meals today are at your own expense.

Accommodation: Bali Hotel (to be confirmed)

Wild Earth Travel

Small Ships, Big Adventures

0800 945 3327 (within New Zealand) | +64 (0) 3 365 1355 | **1800 107 715** (within Australia)

info@wildearth-travel.com | **wildearth-travel.com**



Wild Earth Travel

Small Ships, Big Adventures

wildearth-travel.com

info@wildearth-travel.com

Day 2 Fly to Sorong, embarkation

This morning, please ensure your cabin luggage is fitted with cabin tags clearly labelled with your name and cabin number. Any valuables or personal items should be kept on you throughout the day. After breakfast at the hotel, we board a morning charter flight to Sorong, where our vessel the Greg Mortimer awaits.

Transfer to the port for embarkation. You will have time to settle into your cabin before our important briefings begin. Enjoy the thrill of departure as we 'throw the lines' and set sail for Cenderawasih Bay. Meet your Expedition Team and crew at the Captain's Welcome Dinner.

Day 3 Amsterdam Island

Part of the secluded Su Islands, Amsterdam Island offers a unique opportunity to immerse yourself in local culture. Discover this little-known gem as we explore its pristine environment. Friendly locals will welcome us to the village beach, providing an authentic glimpse into island life. We'll learn about their customs, traditions, and the challenges and rewards of living in this remote paradise.

Day 4 Auri Islands, Cenderawasih Bay

Cenderawasih Bay, or Bird of Paradise Bay, is a marine wonderland teeming with life. As Indonesia's largest marine park, Teluk Cenderawasih National Park safeguards over 14,500 square kilometres of pristine ocean, nurturing a vibrant ecosystem that includes whale sharks, dugongs, dolphins, and a dazzling array of fish and coral species.

Lying within Cenderawasih Bay, the Auri Islands are home to some of the most pristine coral reefs in Indonesia and an ideal place to start your water activities in West Papua. Enjoy some beachcombing, swimming, snorkelling and diving in the clear, warm tropical waters. Enjoy Zodiac cruising to explore to the small waterfall and take a stroll at the lagoon marshlands looking for resident wildlife at Maransabadi island.

In the afternoon the ship repositions to Roon island. Dive and snorkel among the colourful shallow reefs in Numamuran Strait, where the jungle meets the reef, and where we search for branching corals, boulder coral colonies, and

cushion stars. Paddlers may glimpse dugongs--relatives of manatees that graze on seagrass. At the southern end of Roon Island, divers and snorkellers might see Hawksbill and green turtles, barracuda and surgeonfish, and where a Japanese Zero fighter aircraft, a relic from World War II rests on a shallow coral slope.

Day 5 Kwatisore, Cenderawasih Bay Marine Park

Discover the magic of Cenderawasih Bay, a secluded paradise renowned for its extraordinary marine life. Here, you have an unparalleled opportunity to swim alongside gentle giant whale sharks in their natural habitat. It's crucial to remember that whale sharks are protected species. Your expedition will adhere to strict guidelines to ensure minimal disturbance to these magnificent animals. By observing these guidelines and maintaining a respectful distance, you can contribute to their conservation while enjoying an unforgettable encounter. While sightings are never guaranteed, the chance to encounter these majestic creatures in such pristine waters is truly unforgettable. The experience of sharing the ocean with such an extraordinary creature is a privilege that will stay with you long after your journey ends.

Beyond the ocean's depths, immerse yourself in the rich tapestry of West Papuan culture with a visit to Kwatisore village. Our expert team will introduce you to the unique customs, traditions, and way of life of this fascinating community. You'll be captivated by their distinct dances, adornments, and music, a stark contrast to the familiar rhythms of Raja Ampat and the Spice Islands. Experience the thrill of a once-in-a-lifetime wildlife encounter and a deep cultural immersion in this remote corner of Indonesia.

Day 6 Pulau Num & Palau Swande

Pulau Num and Palau Swande are two pristine islands nestled within Cenderawasih Bay, offering unparalleled opportunities for water activities. Here, kayakers can paddle through serene lagoons surrounded by lush mangrove forests and divers can embark on an adventure to discover vibrant coral reefs teeming with life. Encounter schools of colourful fish, graceful sea turtles, and even majestic manta rays. Discover the magic of the underwater world in Pulau Num, home to a myriad of marine creatures including clownfish, angelfish, butterflyfish, and the impressive Napoleon wrasse. For a truly unforgettable experience, keep an eye out for sharks, as several species inhabit the waters of Cenderawasih Bay. Palau Swande is a birdwatcher's paradise, boasting a diverse range of avian species. Encounter the iconic birds-of-paradise with their elaborate plumage, vibrant eclectus parrots,

Wild Earth Travel

Small Ships, Big Adventures

0800 945 3327 (within New Zealand) | +64 (0) 3 365 1355 | **1800 107 715** (within Australia)

info@wildearth-travel.com | **wildearth-travel.com**



Wild Earth Travel

Small Ships, Big Adventures

wildearth-travel.com

info@wildearth-travel.com

elusive cuscus, and the impressive cassowary.

Day 7 At Sea

Enjoy the sea crossing to Raja Ampat. Enjoy informative talks from our team of experts, get to know your fellow expeditioners, stay active in the gym or treat yourself to a massage in the wellness centre.

Days 8-9 Raja Ampat - the epicentre of the Coral Triangle

Located in the 'Coral Triangle,' Raja Ampat archipelago has been described as a marine 'species factory,' and a Mission Blue Hope Spot. Believed to contain the most biodiverse marine habitat on the planet, the waters surrounding Raja Ampat are home to 600 species of hard coral and 1,500 types of fish - more than anywhere else in the world - which makes for exceptional diving and snorkelling experience. We plan to spend two days exploring the coral reefs and shoals, limestone formations and rainforests of this hidden gem. Some of the islands we plan to explore include Wayag and Waigeo.

Waigeo, the largest island in the Raja Ampat archipelago, is a birder's dream. Its rugged coastline, framed by towering cliffs, gives way to a vast, largely unexplored interior. This dense jungle is home to an incredible array of wildlife, including the iconic Wilson's Bird-of-Paradise and the Red Bird-of-Paradise. Opossums, snakes, tortoises, and monitor lizards also thrive in this pristine environment. Our early morning birding expedition takes us through diverse habitats, from regenerating to primary forest. This rich ecosystem supports a thriving bird population, with a chance to spot a variety of species, including hornbills, parrots, and pigeons as they emerge from their roosts. We'll be on the lookout for elusive nocturnal creatures like the Papuan Boobook owl, Frogmouth, and Large-tailed Nightjar. This is an unparalleled opportunity to experience the raw beauty of Waigeo and its extraordinary avian inhabitants.

Wayag Island is a quintessential postcard image of paradise. Its iconic mushroom-shaped limestone formations, rising dramatically from emerald waters, are a photographer's dream. This World Heritage-listed island offers a multitude of activities for every adventurer. Explore the stunning Wayag Lagoon by Zodiac, surrounded by lush vegetation and exotic birdlife. Discover hidden white-sand beaches and the labyrinth of limestone karst islands, adorned with vibrant orchids and pitcher plants. For the adventurous, the challenging climb to the summit of Mount Pindito is rewarded with breathtaking panoramic views. Snorkelers and divers will be captivated by the underwater world, teeming with colourful fish and pristine coral reefs. Kayakers can paddle

through the enchanting lagoon, surrounded by the island's breathtaking beauty. Whether you prefer relaxation or adventure, Wayag Island promises an unforgettable experience.

Day 10 Disembark in Sorong

During the early morning, we cruise back into Sorong. Farewell your Expedition Team upon disembarkation and transfer to the airport for our charter flight back to Denpasar, Bali.

Note: the arrival time in Bali is contingent on the approved allocated slot for our charter flight to and from Sorong, which we expect to receive in February 2026.

Please note:

Itineraries are subject to change.

Wild Earth Travel

Small Ships, Big Adventures

0800 945 3327 (within New Zealand) | +64 (0) 3 365 1355 | **1800 107 715** (within Australia)

info@wildearth-travel.com | **wildearth-travel.com**



Wild Earth Travel

Small Ships, Big Adventures

wildearth-travel.com

info@wildearth-travel.com

YOUR SHIP: GREG MORTIMER

YOUR SHIP:	Greg Mortimer
VESSEL TYPE:	Expedition
LENGTH:	104 metres
PASSENGER CAPACITY:	132
BUILT/REFURBISHED:	2019

Capable of negotiating the strongest winds and waves, the Greg Mortimer is built to world-class polar standards - designed in close consultation with our expedition specialists, taking advantage of our more than 25 years of experience.

The Greg Mortimer redefines expedition cruising for the future, with just 132 passengers on board in the polar regions. Not only is the ship bigger to contend with adverse weather conditions, its added creature comforts make for a more enjoyable journey out on the open ocean. The Greg Mortimer remains true to our ethos and focus on multiple landings, flexible itineraries and family atmosphere - just with an improved home base!

As a modern and custom-designed ship, the Greg Mortimer is at the cutting edge of nautical technology. Robust, powerful and built with our guests in mind, this ship marks a significant investment in our fleet's capabilities. From the European Arctic to the depths of Antarctica, and other far-flung destinations in-between, the Greg Mortimer will make your journey a breeze!

Greg Mortimer ULSTEIN X-BOW™

Our expeditions face some of the worst Mother Nature can throw at us. However, this won't be a problem on the Greg Mortimer with the introduction of the patented X-BOW™, created by Norwegian

ship designer ULSTEIN. As one of the leaders in marine engineering, ULSTEIN's X-BOW™ is an inverted bow concept that's been built on over 100 vessels in the shipping industry. Excitingly, we are the first expedition cruise operator to utilise this technology for the challenging open ocean waves!

Hydraulic viewing platforms

Although there is no doubt that you'll love the aesthetics of the Greg Mortimer, we are all here to admire the spectacular landscape and spot the elusive wildlife in their natural habitat. To ensure you get the best views possible, the new ship features unique viewing platforms, custom-built for the Greg Mortimer. Accessed from Deck 5, the two platforms fold out hydraulically for unobstructed views of passing marine life and seabirds - make sure your camera is locked and loaded!

Zodiac launching platform

Zodiacs are a vital part of getting up close and personal on your adventure - sneaking into areas that the Greg Mortimer can't reach. On this new ship, there are specially designed launching platforms that enable us to load Zodiacs easily and quickly, allowing you to spend more time exploring on the two to three daily landings. There are 15 Zodiacs that are boarded from either side of Deck 3 (sea level), perfect for when there is a group of fluffy cute penguin chicks that we need a photo of!

Activity Platform

Regardless of your destination, we offer a number of additional activities to allow you to see more of the environment. From kayaking and diving to climbing and ski touring, it's these optional activities that often leave the biggest impression on your trip as a whole. Onboard the Greg Mortimer, there is a

Wild Earth Travel

Small Ships, Big Adventures

0800 945 3327 (within New Zealand) | +64 (0) 3 365 1355 | **1800 107 715** (within Australia)

info@wildearth-travel.com | **wildearth-travel.com**



Wild Earth Travel

Small Ships, Big Adventures

wildearth-travel.com

info@wildearth-travel.com

spacious prep and loading platform for these activities and more - designed in consultation with our expert activity guides.

Environmentally friendly

Climate change and carbon emissions continue to be major issues that everyone needs to be aware of and actively managing. This includes reduced emissions into the air and sea, lower energy consumption, high fuel efficiency, reduced light pollution for minimal wildlife disruption and lower on-board plastic use. It's vital to also mention the state-of-the-art virtual anchoring technology of the X-BOW™, which means the ship can float anchorless while launching Zodiacs, kayaks etc, without disturbing delicate sea floor areas.

Safety features

This starts with the return-to-port equipment - not compulsory on a ship of this size - which duplicates the propulsion system. This enables the ship to maintain operating systems and comfort in the event of engine failure. Furthermore, the Greg Mortimer is Polar Code 6 compliant, holds BV class and is fully compliant with the latest SOLAS requirements. It's also built with a Rolls Royce stabiliser system. If there's an incident or accident during your adventure, the ship has an on-board, fully-stocked medical centre - where our trained medical team can provide necessary treatment in a timely fashion. Safety continues to be an issue that our team takes very serious and the Greg Mortimer allows us to create an environment where you can concentrate on the brilliant landscape and wildlife, without worrying about your wellbeing.

Ship Life

Greg Mortimer is designed to serve your every need. It's your bedroom, bathroom, lounge, dining room and even your observatory. Make yourself at home, the Greg Mortimer is yours to enjoy!

Observation Points

Let's face it - you don't want windowless rooms when travelling around some of the most beautiful locations around the world. This is why the Greg Mortimer is designed with plenty of dedicated observation spaces - ideal for keen bird spotters, wildlife watchers and those wanting to watch the scenery go past. From the indoor 180-degree lounge and outdoor 360-degree open deck, both on deck 8, to the 270-degree open sundeck on level 7, there are plenty of observation points to share around the ship! If these are full, then you can take up a spot on one of the two hydraulic viewing platforms on deck 5. Aurora Expeditions also has an open bridge policy, which means at any point you can come up to the bridge and check out what the captain and officers are up to. From watching navigational practices to observing mapping techniques, you can get a firsthand look at the inner workings of the Greg Mortimer.

Shore excursions

Although the ship is fun, the real enjoyment comes from the many shore excursions that are available. Depending on the weather and itinerary, it's possible to take two to three landings daily, taking a look at everything from rock formations and ancient ruins to cute groups of penguins. We know time is of the essence in these wild locations, so the Greg Mortimer has been designed with 15 Zodiacs, which means you can maximise your time on shore. From four dedicated sea level launching platforms, transfers are quicker, safer and enable you to get closer to the action for a longer period of time. Just remember to charge your camera before you step onto the Zodiac!

Activity options

From kayaking and skiing to diving and climbing, these are one-in-a-lifetime opportunities that you need to take advantage

Wild Earth Travel

Small Ships, Big Adventures

0800 945 3327 (within New Zealand) | +64 (0) 3 365 1355 | **1800 107 715** (within Australia)

info@wildearth-travel.com | **wildearth-travel.com**

Wild Earth Travel

Small Ships, Big Adventures

wildearth-travel.com

info@wildearth-travel.com

of. Aboard the Greg Mortimer there is a specially designed launching platform for all activities, a concept overseen by our activity experts. This area also includes individual lockers in the expansive mudroom and rapid drying areas for wetsuits so you can quickly get warm after exploring in the elements!

Dining

From the moment you step onto the Greg Mortimer, we aim to give you the best hospitality service possible. Starting with the official Captain's welcome, as our guests, you're welcome to 24 hours complimentary coffee, tea and snack facilities in addition to the range of different menu options and courses for each meal. Meals are served in large dining room/restaurant with family style dining, perfect to swap stories with your new expedition family. Enjoy the range of house wine, beers and soft drinks included with dinner after a long day in the wild, preparing yourself for another exciting day to follow. On the last day of your trip, the team on the Greg Mortimer put on a special farewell four-course dinner and cocktails - a perfect way to reflect on your time on the ship and consolidate lifelong friendships with the people you've met on-board.

On-board entertainment

When you're relaxing during a sea day or you have a little downtime on the ship between excursions, what is there to do onboard the Greg Mortimer? Plenty! On all our expeditions, there are experts who lead presentations in the spacious lecture room so you can understand the region a little better. These often include topics as broad as history and culture to biology and climate change, these presentations aim to educate and entertain. If you're keen to just watch the surroundings and keep your eyes peeled for wildlife, you have access to two bars/lounges where the stunning floor to ceiling windows offer a special perspective on the landscape. The Greg Mortimer is also

decked out with other facilities for your enjoyment. There is a library on Deck 5 with books and maps and a Wellness Centre complete with gym equipment, sauna and spa. Feeling a little sore after walking around all day? Treat yourself to a massage at the Wellness Centre and feels the aches disappear! Keen photographers and artists will revel in the multimedia room on Deck 5.



on Deck 5.

Wild Earth Travel

Small Ships, Big Adventures

0800 945 3327 (within New Zealand) | +64 (0) 3 365 1355 | **1800 107 715** (within Australia)

info@wildearth-travel.com | **wildearth-travel.com**

Wild Earth Travel

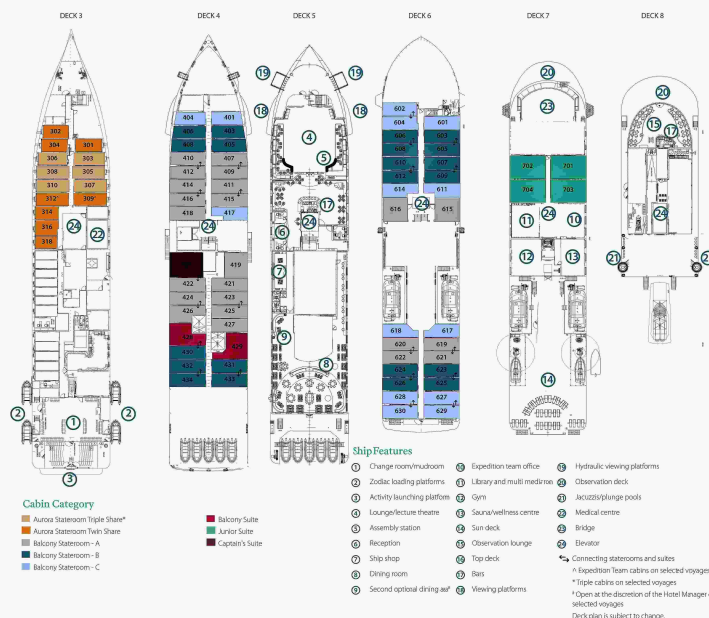
Small Ships, Big Adventures

wildearth-travel.com

info@wildearth-travel.com

INSIDE YOUR SHIP

Deck plan - Greg Mortimer



Aurora Stateroom Triple



Balcony Stateroom - A



Balcony Stateroom - B



Balcony Stateroom - C



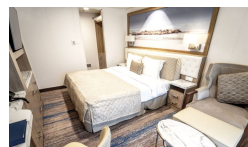
Balcony Stateroom Superior



Captain's Suite



Junior Suite



Wild Earth Travel

Small Ships, Big Adventures

0800 945 3327 (within New Zealand) | +64 (0) 3 365 1355 | 1800 107 715 (within Australia)

info@wildearth-travel.com | wildearth-travel.com



Wild Earth Travel

Small Ships, Big Adventures

wildearth-travel.com

info@wildearth-travel.com

PRICING

05-Oct-2026 to 14-Oct-2026

Aurora Stateroom Triple	17495 AUD pp
Balcony Stateroom - C	19595 AUD pp
Balcony Stateroom - B	20695 AUD pp
Balcony Stateroom - A	22095 AUD pp
Balcony Stateroom Superior	24295 AUD pp
Junior Suite	30295 AUD pp
Captain's Suite	35995 AUD pp

Wild Earth Travel

Small Ships, Big Adventures

0800 945 3327 (within New Zealand) | +64 (0) 3 365 1355 | **1800 107 715** (within Australia)

info@wildearth-travel.com | **wildearth-travel.com**