



Wild Earth Travel

Small Ships, Big Adventures

wildearth-travel.com

info@wildearth-travel.com

ICONIC CAPITALS AND TOWNS OF THE BALTIC LUXURY CRUISE

At the heart of the Baltic Sea , discover the emblematic towns and capitals of the region, a blend of History and sumptuous landscapes. During this 9-day cruise aboard *_Le Champlain_* , fall under the spell of the majestic panoramas of northern Europe.

Over the course of your trip, at every port of call each guest will be able to choose one included excursion from the selection offered by PONANT. During this cruise, enjoy a visit to Gdansk and fall under the spell of the music at a Chopin concert ; dive into the history and tunes of ABBA from Stockholm; or attend a folkloric show in Tallinn. The range of experiences on offer promises intense and varied moments (for the full list of excursions, click on the Itinerary tab).

Leaving from Copenhagen, you will set a course for the charming fishing village of Gudhjem. Located on the small Danish island of Bornholm, it is very popular among the Danes for its gentle way of life and its beautiful landscapes of rock formations.

You will set a course for the charming fishing village of Gudhjem. Located on the small Danish Island of Bornholm, it is very popular among the Danes for its gentle way of life and its beautiful landscapes of rock formations.

For the first time, PONANT will make a port of call on the Danish Island of Christiansoe , a territory measuring less than 0,5 km2 (barely 0,3 square miles) in the very heart of the Baltic Sea. The rocky shorelines of this natural and preserved sanctuary have

magnificent panoramas.

Your ship will then call at Gdansk, famous for its amber stone and its shipyards. The former Hanseatic city will reveal some of its architectural treasures, in Gothic and Baroque styles, restored or rebuilt.

Le Champlain will then sail to the Swedish island of Gotland and call at Visby , a site that was important for the Hanseatic League in the Baltic Sea around the 13th century. UNESCO Heritage Site , this once opulent city still has remarkably well-preserved ramparts, public buildings, merchant houses and warehouses.

Le Champlain will then chart a course for Stockholm. Built on water, the Swedish capital embraces nature, which is omnipresent there. Its blend of medieval architecture, colourful houses and trendy neighbourhoods makes it a particularly enjoyable city to visit.

On Saaremaa , dive into the complex history of this island, Estonia's largest. First invaded by the Vikings, it became Danish then Swedish before being taken by the Russian Empire and later occupied by the Germans. In 1991, it finally became Estonian when the country gained its independence.

You will visit Tallinn , emblematic city of the Hanseatic League, the large trading network that dominated the Baltic Sea for several centuries. Listed as UNESCO Heritage Site, this once

Wild Earth Travel

Small Ships, Big Adventures

0800 945 3327 (within New Zealand) | +64 (0) 3 365 1355 | **1800 107 715** (within Australia)

info@wildearth-travel.com | **wildearth-travel.com**

Wild Earth Travel

Small Ships, Big Adventures

wildearth-travel.com

info@wildearth-travel.com

opulent city still have remarkably well-preserved public buildings, merchant houses and warehouses.

can try out the smorrebrod, traditional danish sandwiches made with ham, cheese or smoked fish.

Your cruise will end at Helsinki. Located on a peninsula surrounded by almost 300 islands, the verdant capital of Finland will charm you with its Art Nouveau architecture.

Day 2 - Gudhjem, Bornholm

Lying in the south-west of the Baltic Sea, the medieval village of Gudhjem, on the island of Bornholm, is one of the most visited and most popular villages in Denmark. As you stroll along its picturesque streets, you will fall under the spell of its varied landscapes, its easy way of life, and the authenticity of this charming town with half-timbered houses topped with red roofs, in the Danish tradition. It is here, along these charming streets, that the first herring smokehouses were built in the mid-19th century, attracting all the region's fishermen. Tucked away in a gorgeous natural setting composed of rocky cliffs, dense forests and beaches of white sand, Gudhjem will provide an unforgettable interlude where time will seem to stand still.

Day 2 - Christiansøe

In the very heart of the Baltic Sea, in the Ertholmene archipelago, the small island of Christiansøe - less than 0,5 km² (barely 0,3 square miles) - awaits you. Thanks to its geographic form, which constitutes a natural harbour with the island of Frederiksholm, it has been used as such for more than a thousand years. Pirates and fishermen succeeded one another here before the construction of its fortress, built between the 17th and 18th centuries, in the time of the Danish-Swedish wars. Visiting Christiansøe, you see the shaping of great history, the re-emergence of the rivalries and alliances that took place in the Baltic Sea. Today, this peaceful island offers you wild and preserved nature. A natural reserve since 1926, it is home in particular to a very large population of nesting and migrating birds that find food and tranquillity here.

Day 3 - Gdansk

This ravishing city on the Baltic sea is nicknamed "the golden door of Poland", and you'll understand why when you see its beautiful Hanseatic architecture.



chitecture.

ITINERARY

Day 1 - Copenhagen

Connected to the far eastern side of Sealand island, a few kilometres away from the Swedish coasts, Copenhagen offers you the high colour of Scandinavian capitals. You can discover the city's riches that weaves through the canal networks through the historical districts of Christiansborg and Nyhavn. Many palaces provide an aperçu of Danish history. For eating, you

Wild Earth Travel

Small Ships, Big Adventures

0800 945 3327 (within New Zealand) | +64 (0) 3 365 1355 | **1800 107 715** (within Australia)

info@wildearth-travel.com | wildearth-travel.com

Wild Earth Travel

Small Ships, Big Adventures



wildearth-travel.com

info@wildearth-travel.com

You'll be charmed by the mouldings and gables that enhance the colourful façades of the houses. Along the Vistula Quays, you can take a pleasant stroll among the crafts shops. In elegant Mariacka street, the amber jewellers will most certainly tempt you into their boutiques. You can visit the church of Saint-Mary and its astronomic clock. Not far, the majestic Long Market square offers the famous Artus Court and the rich Gdansk History Museum.

Day 4 - Visby, Gotland

This old Hanseatic city lies to the west coast of Gotland, a Swedish island in the Baltic sea. Pass through the spectacular Visby fortifications and visit the old town, a UNESCO World Heritage site. You'll discover the grand Visby homes of rich merchants as well as the lovely low wooden houses in the little cobbled streets. Don't miss Saint Mary's cathedral with its octagonal steeples, as well as Powder tower along the fortifications. Make sure you stop over in one of the rose-adorned cafes; indeed roses abound in this town where you can taste one of the island's specialities, namely saffron pancakes with red fruit.

Day 5 - Stockholm

The capital of Sweden occupies an archipelago in the east of the country at the junction of Malar Lake and the Baltic sea. In Gamla stan, meaning "old town" in Swedish, you can stroll at your leisure in picturesque medieval streets until you reach the majestic Royal Palace. On the green island of Djurgården, you can visit several very different kinds of cultural centres: the Vasa museum is dedicated to a 17th century three-mast, the ecomuseum of Skansen presents traditional customs, and the ABBA museum is dedicated to the legendary pop group. For a fantastic, all-encompassing view of Stockholm, you can take a ride in SkyView, a glass-encased sphere gondola that takes you to the top of the world's largest building, the Ericsson Globe, a Stockholm landmark.

Day 6 - Stockholm

The capital of Sweden occupies an archipelago in the east of the country at the junction of Malar Lake and the Baltic sea. In Gamla stan, meaning "old town" in Swedish, you can stroll at your leisure in picturesque medieval streets until you reach the majestic Royal Palace. On the green island of Djurgården, you can visit several very different kinds of cultural centres: the Vasa museum is dedicated to a 17th century three-mast, the ecomuseum of Skansen presents traditional customs, and the ABBA museum is dedicated to the legendary pop group. For a fantastic, all-encompassing view of Stockholm, you can take a ride in SkyView, a glass-encased sphere gondola that takes you to the top of the world's largest building, the Ericsson Globe, a Stockholm landmark.

Day 7 - Saaremaa, Estonia

Welcome to Estonia's largest island, Saaremaa, with its age-old history and mysterious charm. Located in the Baltic Sea, it closes off the Gulf of Riga. The episcopal castle, a medieval fortress and preserved witness of the rich history of the Baltic States, stands proudly in the island's capital, Kuressaare. The island's soils and mild climate give it abundant and diverse nature, where forests, cliffs, dunes and beaches flourish, becoming a haven for thousands of migratory birds every year. The island offers many treasures, between wild nature, nature reserves, meteor craters and windmills.

Day 8 - Tallinn

Opening onto the Baltic sea, to the far north of Estonia, the town of Tallinn will win you over with the picturesque charm of its architecture. You can meander through its little streets in the heart of the medieval centre where its gothic town hall has been standing since 1404. The Kiek in de Kok tower, the Orthodox Alexander Nevski cathedral, or Toompea castle give visitors a taste of this town's rich past. The city was particularly active during the medieval period, as is demonstrated by the very beautiful monuments from this period that are still visible. Don't hesitate to lose yourself in the heart of Tallinn, listed as a UNESCO World Heritage Site.

Wild Earth Travel

Small Ships, Big Adventures

0800 945 3327 (within New Zealand) | +64 (0) 3 365 1355 | **1800 107 715** (within Australia)

info@wildearth-travel.com | wildearth-travel.com

Wild Earth Travel

Small Ships, Big Adventures



wildearth-travel.com

info@wildearth-travel.com

Day 9 - Helsinki

Seated in the southern peninsula of Finland, Helsinki offers the buzz of a cosmopolitan city that has opted for both elegance and beauty. Explore its historical centre where the soft hues of neoclassical buildings are juxtaposed with spectacular modern constructions. The bustling Kallio district is teeming with boutiques and restaurants where you can taste some local specialities like graavilohi - a sweet, marinated, aromatic salmon dish. Keskuspuisto park, a stone's throw from the centre, is a good place to sit and unwind.

Please note:

Itineraries are subject to change.

Wild Earth Travel

Small Ships, Big Adventures

0800 945 3327 (within New Zealand) | +64 (0) 3 365 1355 | **1800 107 715** (within Australia)

info@wildearth-travel.com | **wildearth-travel.com**

Wild Earth Travel

Small Ships, Big Adventures

wildearth-travel.com

info@wildearth-travel.com

YOUR SHIP: LE CHAMPLAIN

YOUR SHIP:	Le Champlain
VESSEL TYPE:	Luxury
LENGTH:	127 metres
PASSENGER CAPACITY:	92 cabins
BUILT/REFURBISHED:	2017/2018

Featuring innovative and environmentally-friendly equipment, elegantly designed cabins, spacious suites with large windows, and lounge areas that open onto the outside, this new limited-capacity yacht boasting just 92 cabins and suites will offer you a truly unique cruising experience.

As the first ship in a new series, Le Champlain will embody the unique atmosphere that is the cruise line's hallmark: a subtle blend of refinement, intimacy and comfort.

Aboard this ship that flies the French flag, you will experience the incomparable pleasure of an intimate cruise, with the possibility of exploring an ever-increasing range of destinations in an ethnic-chic ambiance with luxury service.

Experience a luxurious setting where the accent is on authenticity and passion for travel.

RESTAURANTS

As it is an essential part of French culture, gastronomy will naturally have pride of place aboard this new ship. Through its two restaurants, Le Champlain will invite you on a journey to elegance and epicureanism.

In a relaxed atmosphere, a first dining area located on Deck 3 and able to seat 70 will serve grilled meats daily, along with a

variety of salads and desserts.

To the back of Deck 4, you will find a 260 m² panoramic restaurant which can accommodate all of our passengers in a single sitting. Designed differently to that on our other ships, this dining area, which opens onto the outside, will have a buffet of salads, desserts and cheeses at your disposal. Our discreet and attentive crew will provide table service for hot meals.

PUBLIC AREAS

Like Le Boreal and its sisterships, Le Champlain has many common areas that are designed and equipped to meet all of your needs while preserving the intimacy of each passenger.

A 140 m² reception area includes: A reception/concierge desk, An excursions desk, The ship's administrative services, The sales office, manned by our Guest Relations Officer, Our 50 m² boutique which sells clothing, jewellery, beauty products, postcards and various accessories, Toilets accessible to passengers with reduced mobility.

A new hydraulic platform with adjustable height provides: Easier boarding than on any other cruise ship, Easier Zodiac embarkation and disembarkation for expeditions, Easier access to the sea for swimming and practising various water sports such as kayaking or paddle-boarding.

A pool deck offering: A pool with a panoramic view, equipped with a counter-current swimming system, A pleasant solarium, An outdoor bar and lounge with armchairs and sofas.

A 200 m² main lounge which can accommodate all of our passengers to share convivial moments and to host activities organised during the day or evening.

Lastly, a theatre that seats 188, equipped with: The latest

Wild Earth Travel

Small Ships, Big Adventures

0800 945 3327 (within New Zealand) | +64 (0) 3 365 1355 | **1800 107 715** (within Australia)

info@wildearth-travel.com | **wildearth-travel.com**

Wild Earth Travel

Small Ships, Big Adventures



wildearth-travel.com

info@wildearth-travel.com

sound and lighting technology, A LED wall as the stage backdrop, for the projection of high-resolution images and videos.



and videos.

Wild Earth Travel

Small Ships, Big Adventures

0800 945 3327 (within New Zealand) | +64 (0) 3 365 1355 | **1800 107 715** (within Australia)

info@wildearth-travel.com | **wildearth-travel.com**

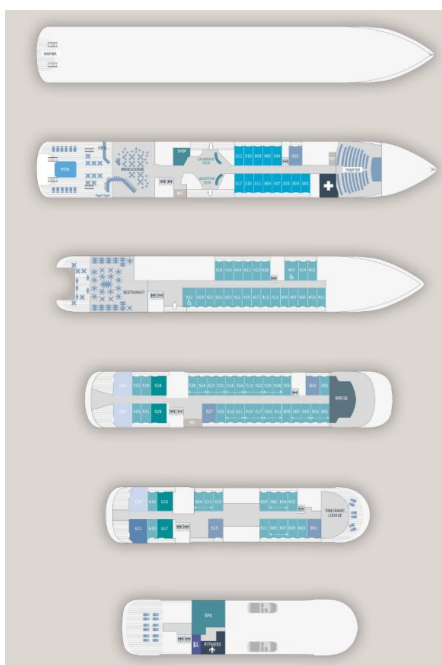
Wild Earth Travel

Small Ships, Big Adventures

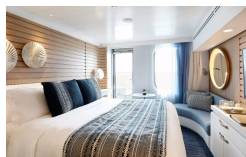
wildearth-travel.com

info@wildearth-travel.com

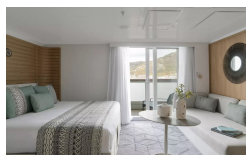
INSIDE YOUR SHIP



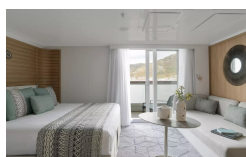
Deluxe Stateroom



Deluxe Suite Deck 4



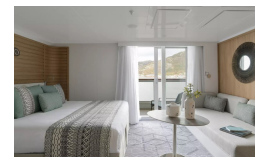
Deluxe Suite Deck 6



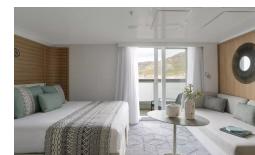
Grand Deluxe Suite Deck 6



Deluxe Suite Deck 3



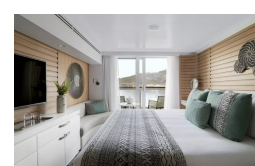
Deluxe Suite Deck 5



Grand Deluxe Suite Deck 5



Prestige Deck 4



Wild Earth Travel
Small Ships, Big Adventures

0800 945 3327 (within New Zealand) | +64 (0) 3 365 1355 | 1800 107 715 (within Australia)

info@wildearth-travel.com | wildearth-travel.com

Wild Earth Travel

Small Ships, Big Adventures

wildearth-travel.com

info@wildearth-travel.com

PRICING

16-Jul-2026 to 24-Jul-2026

Deluxe Stateroom	11640 AUD pp
Prestige Deck 4	12920 AUD pp
Prestige Deck 5	13560 AUD pp
Prestige Deck 6	14330 AUD pp
Deluxe Suite Deck 4	19990 AUD pp
Deluxe Suite Deck 3	19990 AUD pp
Deluxe Suite Deck 6	19990 AUD pp
Deluxe Suite Deck 5	19990 AUD pp
Prestige Deck 5 Suite	27060 AUD pp
Prestige Deck 6 Suite	28470 AUD pp
Privilege Suite Deck 6	29880 AUD pp
Privilege Suite Deck 5	29880 AUD pp
Grand Deluxe Suite Deck 6	32840 AUD pp
Grand Deluxe Suite Deck 5	32840 AUD pp

Deluxe Stateroom	10950 AUD pp
Prestige Deck 4	12150 AUD pp
Prestige Deck 5	12750 AUD pp
Prestige Deck 6	13470 AUD pp
Deluxe Suite Deck 4	18780 AUD pp
Deluxe Suite Deck 6	18780 AUD pp
Deluxe Suite Deck 5	18780 AUD pp
Deluxe Suite Deck 3	18780 AUD pp
Prestige Deck 5 Suite	25400 AUD pp
Prestige Deck 6 Suite	26730 AUD pp
Privilege Suite Deck 5	28050 AUD pp
Privilege Suite Deck 6	28050 AUD pp
Grand Deluxe Suite Deck 5	30830 AUD pp
Grand Deluxe Suite Deck 6	30830 AUD pp

10-Aug-2026 to 18-Aug-2026

Wild Earth Travel

Small Ships, Big Adventures

0800 945 3327 (within New Zealand) | +64 (0) 3 365 1355 | **1800 107 715** (within Australia)

info@wildearth-travel.com | wildearth-travel.com

Wild Earth Travel

Small Ships, Big Adventures

wildearth-travel.com

info@wildearth-travel.com

PRICING

18-Aug-2026 to 26-Aug-2026

Deluxe Stateroom	10950 AUD pp
Prestige Deck 4	12150 AUD pp
Prestige Deck 5	12750 AUD pp
Prestige Deck 6	13470 AUD pp
Deluxe Suite Deck 5	18780 AUD pp
Deluxe Suite Deck 3	18780 AUD pp
Deluxe Suite Deck 6	18780 AUD pp
Deluxe Suite Deck 4	18780 AUD pp
Prestige Deck 5 Suite	25400 AUD pp
Prestige Deck 6 Suite	26730 AUD pp
Privilege Suite Deck 6	28050 AUD pp
Privilege Suite Deck 5	28050 AUD pp
Grand Deluxe Suite Deck 5	30830 AUD pp
Grand Deluxe Suite Deck 6	30830 AUD pp

ADDITIONAL CHARGES:

Port Taxes 875 USD pp

Wild Earth Travel

Small Ships, Big Adventures

0800 945 3327 (within New Zealand) | +64 (0) 3 365 1355 | **1800 107 715** (within Australia)

info@wildearth-travel.com | **wildearth-travel.com**



Wild Earth Travel

Small Ships, Big Adventures



wildearth-travel.com

info@wildearth-travel.com

SPECIAL OFFERS

Online prices reflect the current brochure fare savings of up to 30%. Prices may change based on demand. Terms and conditions apply. This special offer is subject to availability. Please contact us for more details.

Wild Earth Travel
Small Ships, Big Adventures

0800 945 3327 (within New Zealand) | +64 (0) 3 365 1355 | **1800 107 715** (within Australia)

info@wildearth-travel.com | **wildearth-travel.com**