



ICELAND TO GREENLAND: IN THE WAKE OF THE VIKINGS ADVENTURE CRUISE 2025

The Norse originally set sail from Iceland in search of plentiful farmland, and their search was rewarded in the beautiful and fertile fjords of Greenland. Follow Erik the Red's original route to explore this seldom-seen coastline, visiting important archaeological sites and modern Greenlandic communities along the way.



ITINERARY

Day 1: Reykjavík, Iceland - Begin Your Adventure

Your journey begins in the late afternoon, following a day of independent exploration and arrival in the captivating city of Reykjavik. Iceland's cosmopolitan capital was established in the year 874 CE.

Powered by geothermal energy, Reykjavik is widely considered one of the cleanest, greenest cities on Earth. Food, culture, and nightlife abound.



wildearth-travel.com

info@wildearth-travel.com

The National Culture House preserves treasures like the Poetic Edda and the Norse Sagas in their original manuscripts.

Day 2: At Sea - Set Sail like the Vikings

Watch for whales and seabirds as we sail the Denmark Strait. You'll be truly in the wake of the Vikings as we journey westward from Iceland.

The on-board learning program will prepare you for the archaeology, history, culture, and wildlife that await you in Greenland!

Day 3-5: East Greenland - Witness Fjords, Icebergs, and Whales

Explore the remote reaches of east Greenland by ship, in Zodiacs, and on land.

Your first views of this seldom-visited region will reveal a stunning coastline traced with innumerable fjords and potentially dotted with pack ice.

Whether on foot, on shore, or on the ship, our expert expedition team will be by your side, sharing their extensive knowledge and insights. Join them out on deck to keep a keen eye out for iconic Arctic wildlife, including the polar bears, seals, and humpback whales. Learn from their expertise as they provide fascinating interpretation and help you gain a profound connection to the stunning landscapes we traverse.

Day 6: Ikerasassuaq (Prince Christian Sound) - Marvel at Mountains and Glaciers

Make the most of your time out on deck, as our experts scout for opportunities to go ashore along this breathtaking landscape.

Soak in the breathtaking beauty of one of the world's most majestic waterways, Ikerasassuaq (Prince Christian Sound), where the Imringer and Labrador Seas join through the islands of the Cape Farewell Archipelago.

Here, craggy mountain peaks tower over still waters fed by calving glaciers.

Day 7: South Greenland - Visit Kujataa UNESCO World Heritage Site

Pay a visit to the Kujataa UNESCO World Heritage Site, where Norse settlement history intersects with contemporary Greenlandic life.

Admire the jagged mountains that rise from beyond green pastures, with sheep farms directly bordering ice fjords.

Along its southern coast, Greenland lives up to its name; the land is fertile, agriculture thrives, and farms and vegetable husbandry contrast with the ice that covers so much of the rest of the country.

Discover Greenland's only heated outdoor spa with complete views of icebergs and mountain peaks. This hot spring has been cherished for centuries, with a notable tale about Leif Erikson who, a thousand years ago, took a refreshing swim before embarking on his journey towards uncharted lands to the west.

Unlike volcanic hot springs, this oasis gets its warmth from geothermal subsoil. As the soil layers rub against each other in the spring, the water is heated, reaching temperatures of around 38 degrees Celsius (100 degrees Fahrenheit).

Day 8: Hvalsey - Immerse Yourself in Viking Archaeology

Walk amongst the ruins of captivating history!

Learn more about the settlement at haunting Hvalsey, a major Norse centre in the early centuries of the last millennium.



Wild Earth Travel

Small Ships, Big Adventures

wildearth-travel.com

info@wildearth-travel.com

Hvalsey Church is the best-preserved Norse ruin in Greenland--the last known record from the original Norse colony is of a wedding held here in September 1408!

Day 9: Brattahlíð - Tour a Reconstructed Norse Settlement

Visit fascinating Brattahlíð, a UNESCO World Heritage Site in the most fertile region of Greenland. Walk amongst a reconstructed Norse church and Viking longhouse to fully immerse yourself in the experience.

It was once the home of Viking explorer Erik the Red and his descendants until the 1400s. Today, Greenlandic Inuit run the sheep farms originally worked by Norse settlers.

Day 10: Sermersooq - Enjoy Birdwatching and Zodiac Cruising

Explore the Sermersooq region of Greenland by Zodiac or by foot, as landing conditions permit.

Here you'll find a stunning myriad of mountain peaks, glaciers, and deep fjords, with records of human habitation that stretch back over 1,500 years.

Keep a look out for nattoralik (white-tailed eagles), seabirds, and marine mammals while you enjoy the lush vegetation of southwest Greenland.

Day 11: Nuuk - Visit Museums, Shops, and Cafés

Stop in at vibrant Nuuk, the capital of Greenland. Visit the Greenland National Museum, one of the city's many outstanding features, where the world-famous Qilakitsoq mummies rest.

The old harbour includes many buildings dating from Danish colonial days, while contemporary Nuuk is known for art, shopping, pubs, and cafes.

Day 12: Kangerlussuatsiaq Fjord (Evighedsfjorden) - Take a Zodiac Cruise at the Foot of a Glacier

Kangerlussuatsiaq means "the rather big fjord" in Greenlandic, while the Danish name Evighedsfjorden translates to "the fjord of eternity," underscoring its vastness and seemingly never-ending nature.

See why Kangerlussuatsiaq Fjord lives up to its name and marvel at this complex coastal waterway that includes calving glaciers, sheer bird cliffs, and streams cascading against a towering mountain backdrop.

Explore this sublime glacial landscape by ship and by Zodiac. The waters here are relatively warm, due to the West Greenland Current and the subarctic location.

Day 13: Kangerlussuaq, Greenland - Cross the Arctic Circle

Complete your journey up Kangerlussuaq Fjord (Søndre Strømfjord), a 190-kilometre-long fjord surrounded by mountains and glaciers, and cross the Arctic Circle on your way. Kangerlussuaq, the settlement at the head of the fjord, is a former US Air Force base.

Transfer by Zodiac to shore, then ride to the airport by bus for your charter flight to Toronto, ON.

Please Note:

Itineraries are subject to change.

Wild Earth Travel
Small Ships, Big Adventures

0800 945 3327 (within New Zealand) | +64 (0) 3 365 1355 | **1800 107 715** (within Australia)

info@wildearth-travel.com | wildearth-travel.com



Wild Earth Travel

Small Ships, Big Adventures

wildearth-travel.com

info@wildearth-travel.com

YOUR SHIP: OCEAN ENDEAVOUR

YOUR SHIP:	Ocean Endeavour
VESSEL TYPE:	Expedition
LENGTH:	137m
PASSENGER CAPACITY:	199
BUILT/REFURBISHED:	1982 - refurbished 2001, 2004, 2010, 2015, 2016, 2018

Ocean Endeavour is a comfortable, well-appointed small expedition ship expertly engineered to explore the Polar Regions. The ship has an ice-strengthened hull, Zodiacs for exploration and remote landings, and advanced navigation equipment. The newly-refurbished vessel offers a superb guest experience with an expansive choice of cabin categories, large cabins and common areas, a sundeck and observation area, plenty of deck space for polar landscape viewing, and lounges for learning and reflection. The ship's interiors have a contemporary aesthetic that provides a bright and spacious feel throughout.

Endeavour is also the only polar adventure ship in Antarctica focused on health and wellness, and offers a contemporary approach to cuisine and newly-designed health and fitness features. Facilities include a spa serviced by organic spa provider VOYA, His & Hers saunas, a salt water pool, a gym, and a juice and smoothie bar. Complimentary activities include yoga and stretching classes, an exclusive Polar Photography program, the Scientists in Residence program, and more adventure activities than any other Quark vessel. The ship also has a polar library, and a Polar Boutique for gifts and any needed gear.

Features of the Ocean Endeavour

VOYA spa treatments and beauty products, Choice of 13 cabin categories, Bright, spacious cabins and common areas, Plenty of deck space for observation, Lounge with expansive views, Quiet zone for contemplation, Newly-refurbished restaurant, Contemporary dining with complimentary wine with dinner, Juice and smoothie bar, Lecture theater, Polar library, Polar boutique, Health and Wellness, Spa treatments and beauty products by spa provider VOYA - Organic Beauty From The Sea, Spa menu for face, body, hair and nails, including the exclusive Quark Explorer's treatment, and signature VOYA hand and foot rituals, Yoga and stretching classes, His & Hers saunas, gym, and heated salt water pool

Full range of adventure activities including: kayaking, camping, mountaineering, cross-country skiing, stand-up paddleboarding, Zodiac cruising, shore landings and hiking/ walking.

Deck plan varies for the trips to Antarctica



Wild Earth Travel
Small Ships, Big Adventures

0800 945 3327 (within New Zealand) | +64 (0) 3 365 1355 | **1800 107 715** (within Australia)

info@wildearth-travel.com | wildearth-travel.com



Wild Earth Travel

Small Ships, Big Adventures

wildearth-travel.com

info@wildearth-travel.com

Antarctica



Wild Earth Travel

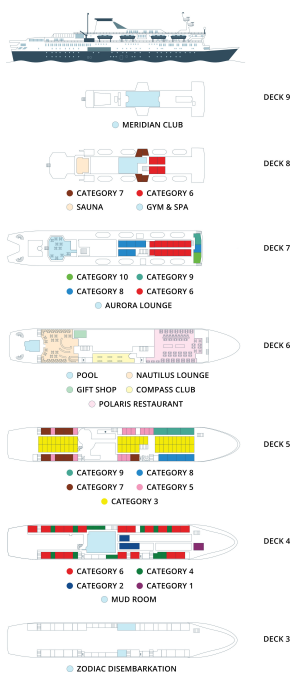
Small Ships, Big Adventures

0800 945 3327 (within New Zealand) | +64 (0) 3 365 1355 | **1800 107 715** (within Australia)

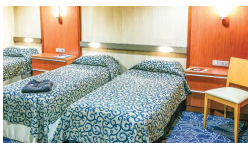
info@wildearth-travel.com | **wildearth-travel.com**



INSIDE YOUR SHIP



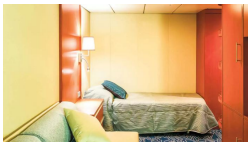
Cabin Category 1



Cabin Category 10



Cabin Category 2



Cabin Category 3



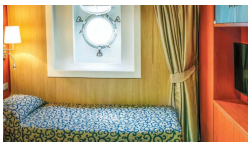
Cabin Category 4



Cabin Category 5



Cabin Category 6



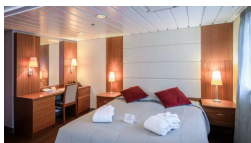
Cabin Category 7



Cabin Category 8



Cabin Category 9





Wild Earth Travel

Small Ships, Big Adventures

wildearth-travel.com

info@wildearth-travel.com

PRICING

12-Jul-2025 to 24-Jul-2025

Cabin Category 1	5395 USD pp
Cabin Category 2	6395 USD pp
Cabin Category 3	7695 USD pp
Cabin Category 4	8995 USD pp
Cabin Category 5	9695 USD pp
Cabin Category 6	10395 USD pp
Cabin Category 7	11195 USD pp
Cabin Category 8	11695 USD pp
Cabin Category 9	12695 USD pp
Cabin Category 10	13695 USD pp

Optional extras & upgrades

Southbound Charter Flight 1450 USD

Kangerlussuaq, Greenland to Toronto, ON, Canada. Evening arrival.



Wild Earth Travel

Small Ships, Big Adventures

0800 945 3327 (within New Zealand) | +64 (0) 3 365 1355 | **1800 107 715** (within Australia)

info@wildearth-travel.com | **wildearth-travel.com**