



# Wild Earth Travel

*Small Ships, Big Adventures*

[wildearth-travel.com](http://wildearth-travel.com)

[info@wildearth-travel.com](mailto:info@wildearth-travel.com)

## ICELAND TO GREENLAND CRUISE

Embark on the Iceland to Greenland luxury cruise, a captivating trip that blends raw Arctic beauty with rich cultural history. The journey commences in Reykjavik, Iceland's vibrant capital, and takes you across the icy North Atlantic to the breathtaking landscapes of Greenland. As you navigate from Reykjavik, you'll conclude your adventure in Greenland's lively capital, Nuuk. Throughout the Iceland to Greenland luxury cruise, you will visit numerous remarkable sites. Explore Reykjavik's iconic Hallgrímskirkja church and Harpa Concert Hall, marvel at Greenland's majestic fjords, and wander through the historic streets of Nuuk. Experience the otherworldly beauty of Skjoldungen's ice-filled fjord and the vibrant Inuit village of Aappilattoq. In Disko Bay, witness the stunning glaciers and wildlife at the UNESCO-listed Ilulissat Icefjord. This extraordinary Iceland to Greenland luxury cruise offers a variety of immersive activities for every traveler. Participate in onboard lectures and refine your photography skills with expert guidance. Discover the thrill of observing marine life in their natural habitat or enjoy an optional kayaking experience with the expedition team. Each stop presents an opportunity to engage deeply with the region's stunning landscapes and vibrant cultures.



### ITINERARY

#### Days 0 - 1 Pre Cruise & Reykjavik

Make sure there is sufficient time to explore this diminutive but dramatic capital city. Despite its small size, you won't be short of things to see and do. To get your bearings, take the elevator to the top of Hallgrímskirkja. This church, designed by famed Icelandic architect Guðjón Samuelsson is one of the most distinctive buildings in town. When you return to earth, visit the city's other renowned building Harpa Concert Hall, located at the heart of Reykjavik's regenerated harbour - also the home of the Maritime Museum. Speaking of

Wild Earth Travel

*Small Ships, Big Adventures*

0800 945 3327 (within New Zealand) | +64 (0) 3 365 1355 | 1800 107 715 (within Australia)

[info@wildearth-travel.com](mailto:info@wildearth-travel.com) | [wildearth-travel.com](http://wildearth-travel.com)



# Wild Earth Travel

*Small Ships, Big Adventures*

**wildearth-travel.com**

**info@wildearth-travel.com**

cultural spaces, tour the National Museum to learn the story of Iceland from past to present. The Reykjavik Art Museum houses an impressive contemporary collection including eye-catching pieces by Erro. And, of course, just 50 kilometres outside the city lies Thingvellir National Park, the site of Iceland's original Viking parliament.

## Day 2 Day at sea

Sea days are rarely dull. Take the time to sit back and let the world go by. The ship's observation decks provide stunning views of the passing ocean. A day at sea gives you the opportunity to mingle with other passengers and share your experiences of this incredible trip or head to our library which is stocked full of reference books. Get an expert's view in one of our on-board lectures or perhaps perfect your photography skills with invaluable advice from our onboard professional photographers.

## Day 3 Skjoldungen

On the craggy east coast of Greenland, the stunningly scenic, U-shaped Skjoldungen Fjord is surrounded by lofty snow-capped mountains, dwarf birch, Arctic wildflowers and willow forests ending with the Thrym Glacier. High rock walls, serpentine rivers and large crevasses of ice pillars known as seracs give way to carved icebergs in the fjord that gleam in a white to blue spectrum. You might also have the opportunity to see whales.

## Day 4 Cruise Prins Christian Sund

The remote and beautiful Prins Christian Sund fjord carves a dramatic path between magnificent granite cliffs and glaciers, offering a stunning panorama of icebergs, rugged peaks and crystal-clear waters. Stretching 100 km at the southernmost tip of Greenland, this long and winding passage separates the mainland from Sammisog and the Cape Farewell Archipelago, creating a breathtaking waterway that captivates adventurers and nature lovers alike.

## Day 4 Aappilattoq

Colourful Nordic houses stand against dramatic mountain ridges encircling Aappilattoq, a remote Inuit village in Greenland's Prins Christian Sund. Accessible only by boat or helicopter, Aappilattoq is home to around 100 rugged individuals who make a living through fishing and hunting. Often called the southernmost inhabited area in Greenland, Aappilattoq is in fact at the midpoint of the east and west coasts.

## Day 5 Gronnedal

Kangilinnuit, formerly Grønnedal, is a historic spot in southwest Greenland and an area of exceptional natural beauty. Once a key U.S. WWII naval base, it lies near Ivigtut and the cryolite mine in scenic Arsuk Fjord. Ships navigate a narrow channel past the Kajartalik lighthouse, Arsuk village and Kungnat Bay, where dramatic landscapes unfold, including the towering 4,600-ft Mt. Kungnat and the breathtaking Arsuk Glacier at the fjord's head.

## Day 5 Ivittut

The deserted mining town of Ivittut (formerly Ivigtut) was once vital for WWII aircraft production with the world's largest reserve of cryolite, a mineral used in aluminium production. Abandoned houses, the enormous mine pit and above-ground cemetery reveal the history of this settlement. Scattered cryolite chunks on the rocky shore mix with relics like old engines from when Inuit used cryolite for snuff. Now only muskoxen roam this eerie place.

## Day 6 Nigerdlikasik Fjord & Glacier

Nigerdlikasik, at the end of Kvanefjord, is a remote and relatively untouched wilderness offering solitude and stunning views of steep cliffs, mountains and the Nigerdlikasik Brae, a small glacier ice field. The glacial ice creates dramatic scenery with ice formations, meltwater streams, steep cliffs and valleys. Carved by ancient ice, the fjord's volcanic geology and rare-earth mineral deposits make it visually and geologically significant.

Wild Earth Travel  
*Small Ships, Big Adventures*

**0800 945 3327** (within New Zealand) | +64 (0) 3 365 1355 | **1800 107 715** (within Australia)

info@wildearth-travel.com | **wildearth-travel.com**





# Wild Earth Travel

*Small Ships, Big Adventures*

**wildearth-travel.com**

**info@wildearth-travel.com**

## Day 7 Maniitsoq

Picturesque Maniitsoq, Greenland's sixth-largest town, is nestled among jagged peaks on Maniitsoq Island. Cliffs teem with birdlife and whales visit the waters seasonally. The small museum, housed in four old colonial buildings, displays Maniitsoq's history and intricately beaded collars from West Greenlandic women's national dress. Staircases offer panoramic views, including the 470-step climb up the "Eiffel Tower" or Sakkortusaavik.

## Day 7 Semilinnuaq Fjord

Sailing through Semilinnuaq Fjord reveals the raw, untamed beauty of the Arctic. Sheer granite walls rise dramatically from deep waters, their reflections shimmering in mirror-like stillness. Whales occasionally breach or glide below the surface, adding life to the scene, while the calls of seabirds echo through the serene landscape. This journey offers a glimpse of some of the planet's most untouched and awe-inspiring scenery.

## Day 8 Evigheds Glacier

The Evigheds Glacier, a majestic outflow from the Greenland Ice Sheet, carves through the dramatic Kangerlussuaq Fjord, also known as Eternity Fjord. This 75-km-long waterway is a haven for wildlife, with white-tailed eagles and black-legged kittiwakes soaring above. Calving icebergs showcase Greenland's raw beauty, but sadly like many glaciers, it is slowly retreating due to global warming's impact on this fragile Arctic ecosystem.

## Day 9 Qeqertarsuaq

Qeqertarsuaq is the largest town on Disko Island, Greenland's largest island, on its west coast, part of Disko Bay, a UNESCO-listed site for its icebergs. The Lyngemark Glacier rises above the town. The area's hills, basalt columns and black sand beaches reflect its volcanic origin. The area is fertile and home to species not found elsewhere in Greenland. Keep an eye out for its hot springs

as we move through floating icebergs.

## Day 10 Ekip Sermia Glacier

Ekip Glacier, or Ekip Sermia in Greenlandic, is one of Greenland's largest and most active calving glaciers, spanning nearly 4 km wide and towering over 200 m. Visitors can almost always witness calving, where pieces of ice break off the glacier's face, creating deafening bangs and giant splashes that send waves across the bay. The contrast between thunderous calving and the ensuing silence provides a glimpse of Greenland's dynamic icy landscape.

## Day 10 Disko Bay

Known for its Inuit culture, whales and icebergs, Disko Bay is a UNESCO World Heritage Site located in Western Greenland. The bay is also home to the Ilulissat Icefjord, one of the fastest-moving glaciers in the world. First visited by Europeans in 1596, in search of a Northwest Passage to Asia, it has been an Inuit home for millennia. The village of Qeqertarsuaq embodies thriving Inuit traditions, preserving the cultural legacy.

## Days 10-11 Ilulissat, Disko Bay

Sailing through the iceberg capital of the world to Disko Bay, the Ilulissat Icefjord is one of the cruise highlights. Given UNESCO World Heritage Site status, the Ilulissat Icefjord is a popular tourist destination, and thanks to the productive Sermeq Kujalleq glacier, thousands of gargantuan icebergs calve from the Greenland ice cap into the sea. The city of Ilulissat is home to many sled-dogs.

## Day 12 Sisimiut

The northernmost city in Greenland, just above the Arctic Circle, Sisimiut remains remarkably ice free in winter and is known as an adventure sports hub all year round. Inhabited for more than 4,500 years by the Dorset, Thule and

Wild Earth Travel  
*Small Ships, Big Adventures*

**0800 945 3327** (within New Zealand) | +64 (0) 3 365 1355 | **1800 107 715** (within Australia)

info@wildearth-travel.com | **wildearth-travel.com**



eventually the Inuit people, dog sledding remains a vital form of transportation. The area is home to humpback whales and Arctic foxes in their summer coat.

### Day 13 Nuuk

Home to more than a third of Greenlanders, the capital of Nuuk has a thriving cultural scene including the Greenland National Museum, home to the world-renowned Qilakitsoq mummies. Also known by its Danish name of Godthab (Good Hope), Nuuk's bustling harbour features Nuuk Cathedral and colourful wooden houses, alongside modern architecture. Nuuk also serves as a gateway to Inuit experiences and adventures in the surrounding fjords and mountains.

### Please note:

Itineraries are subject to change.

# Wild Earth Travel

*Small Ships, Big Adventures*

**wildearth-travel.com**

**info@wildearth-travel.com**

## YOUR SHIP: VEGA

<b>YOUR SHIP:</b>	<b>Vega</b>
<b>VESSEL TYPE:</b>	<b>Luxury Expedition / Cruise Ship</b>
<b>LENGTH:</b>	<b>115 metres</b>
<b>PASSENGER CAPACITY:</b>	<b>152</b>
<b>BUILT/REFURBISHED:</b>	<b>2020-2021-2022</b>



Our brand new ship has been designed to journey to off the beaten path destinations and remote polar regions in style and comfort. The ship incorporates a PC5 ice-strengthened hull combined with extra-large stabilisers to make your journey as smooth as possible.

Sophisticated Elegance. We know how important outdoor space is, so our spacious, relaxing public spaces provide wide open, unobstructed views throughout the ship. The destination will always be in view.

Your Wellbeing. The safety & happiness of our guests is paramount to our 120-strong crew on board as well as our passionate expedition team who'll be serving up thrilling shore excursions and lasting memories.

Cabin Types. Our 76 cabins including 6 suites have all the amenities you will need to feel comfortable including dressing gowns, hairdryers, personal safes and minibars. Our stylish cabins all have desks, a dressing area and comfy seating. En suite bathrooms all feature glass-enclosed rain showers.

Wild Earth Travel

*Small Ships, Big Adventures*

**0800 945 3327** (within New Zealand) | +64 (0) 3 365 1355 | **1800 107 715** (within Australia)

info@wildearth-travel.com | **wildearth-travel.com**



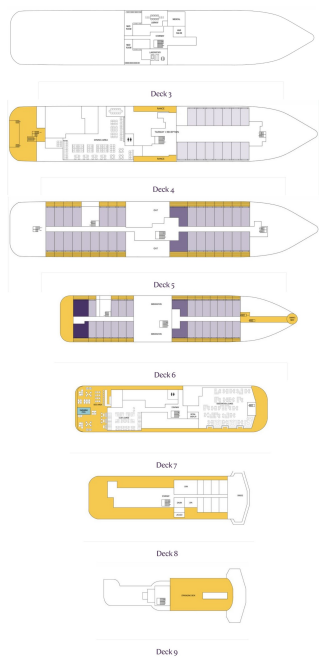


**Wild Earth Travel**  
*Small Ships, Big Adventures*

**wildearth-travel.com**

**info@wildearth-travel.com**

**INSIDE YOUR SHIP**



Balcony D5



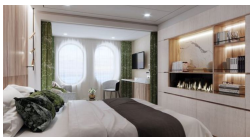
Balcony M5



Oceanview D4



Oceanview M4



Premium Suite



Suite





# Wild Earth Travel

*Small Ships, Big Adventures*

**wildearth-travel.com**

**info@wildearth-travel.com**

## PRICING

14-Aug-2026 to 27-Aug-2026

Oceanview D4	24680 AUD pp
Oceanview M4	25880 AUD pp
Balcony D5	29580 AUD pp
Balcony M5	30880 AUD pp
Suite	43180 AUD pp
Premium Suite	49380 AUD pp