



# Wild Earth Travel

*Small Ships, Big Adventures*

**wildearth-travel.com**

**info@wildearth-travel.com**

## ICELAND CIRCUMNAVIGATION - ADVENTURE CRUISE 2026

Embark on an extraordinary journey through Iceland and East Greenland, where natural wonders and rich cultural experiences await. Begin in Reykjavik, Iceland's vibrant capital, before exploring the dramatic landscapes of the Snaefellsnes Peninsula, often called "Iceland in Miniature." Venture to the remote Westfjords, home to jagged cliffs and secluded beaches, and marvel at North Iceland's volcanic terrains, cascading waterfalls, and steaming geothermal vents. Along the way, encounter iconic wildlife such as whales, seals, and seabirds, with opportunities to visit renowned sites like Husavik, the whale-watching capital, and the picturesque town of Seyðisfjörður, nestled in a tranquil fjord.

Your adventure also extends to the untouched beauty of East Greenland, with its breathtaking fjords, towering icebergs, and a pristine Arctic ecosystem. Cruise along South Iceland's glacial rivers, black sand beaches, and moss-covered lava fields, all shaped by the interplay of fire and ice. The volcanic landscapes of Heimaey in the Westman Islands showcase nature's raw power and resilience. Throughout your voyage, expert guides provide insights into the region's geology, wildlife, and history, making every moment an opportunity for discovery.



### ITINERARY

#### Day 1: Reykjavík, Iceland

##### Begin Your Adventure

After a day of independent exploration in Reykjavik, you'll embark for an evening departure.

Iceland's cosmopolitan capital, Reykjavik was established in the year 874 CE. Powered by geothermal energy, Reykjavik is widely considered one of the cleanest, greenest cities on Earth.

**Wild Earth Travel**  
*Small Ships, Big Adventures*

**0800 945 3327** (within New Zealand) | +64 (0) 3 365 1355 | **1800 107 715** (within Australia)

info@wildearth-travel.com | **wildearth-travel.com**



**wildearth-travel.com**

**info@wildearth-travel.com**

## Day 2: Snæfellsnes Peninsula

### Meander Dramatic Landscapes

Discover one of Iceland's most amazing coastlines, the Snæfellsnes Peninsula, a region known for its dramatic beauty and fascinating geological history.

The Snæfellsnes Peninsula is often referred to as "Iceland in Miniature" due to its diverse range of natural wonders. From black sand beaches to a volcano, a glacier, lava fields, mountains, waterfalls, caves, and craters, the peninsula encapsulates many of Iceland's unique landscapes in one area.

Delight in the many opportunities to observe seabirds and marine life as you explore this spectacular destination.

## Day 3: The Westfjords

### Explore Remote Coastlines

Be among the lucky few to explore the Westfjords, a region known for its jagged bird cliffs and multi-hued beaches--only about ten per cent of the rest of Iceland's visitors ever make it here!

Soak up the breathtaking beauty of the coastal fjords and marvel at the immense mountains that loom overhead. Here, nature's splendour awaits at every turn.

## Day 4-5: East Greenland

### Witness Fjords, Icebergs, and Whales

Explore the remote reaches of east Greenland by ship, in Zodiacs, and on land.

Your first views of this seldom-visited region will reveal a stunning coastline traced with innumerable fjords and potentially dotted with pack ice.

Whether on foot, on shore, or on the ship, our expert expedition team will be by your side, sharing their extensive knowledge and insights. Join them out on deck to keep a keen eye out for iconic Arctic wildlife, including the polar bears, seals, and humpback whales. Learn from their expertise as they provide fascinating interpretation and help you gain a profound connection to the

stunning landscapes we traverse.

## Day 6: North Iceland

### Experience Iceland's Geological Masterpieces

Iceland's north offers a landscape sculpted by volcanic forces, where nature's raw power is on full display. Traverse fields of jagged lava, sculpted by millennia of eruptions, and witness the contrast of snowcapped peaks and fertile valleys. Cascading waterfalls, some with thunderous might and others with delicate beauty, punctuate the region's dramatic scenery.

This region sits atop the Mid-Atlantic Ridge, where the Eurasian and North American tectonic plates slowly drift apart. Keep an eye out for steam rising from geothermal vents--a reminder that Iceland's fiery heart still pulses beneath the surface.

Whether hiking through otherworldly terrain or scanning the seas for marine life, North Iceland's landscapes invite you to witness the Earth's continuous evolution.

## Day 7: Húsavík

### Go Whale Watching

Tour Husavik's Skjalfandi Bay, known as the whale capital of Iceland.

Be sure to bring your binoculars to spot the fifteen different whale species that frequent the area, as well as dolphins and dozens of varieties of birds.

Take advantage of Husavik's diverse museum offerings, including the Whale Museum, the Husavik Museum, and the Exploration Museum, which houses artefacts from Apollo astronaut training in the area.

## Day 8: Seyðisfjörður

### Wander a Picturesque Community and Visit the Skalanes Nature Reserve

Enjoy the chance to explore Seyðisfjörður, nestled at the tip of its namesake fjord.

Stroll the picturesque town of 700, known for its flourishing art scene, cobbled rainbow road, and excellent handicrafts, or take one of the numerous



opportunities for hiking, including a walk up to Tvisongur sound sculpture on a nearby hill.

Visit nearby Skalanes Nature Reserve, which is family-owned and operated. Learn about the centre's research and interpretation of Iceland's environment and cultural history that's a model for sustainable tourism.

Opt to enhance your journey with an optional excursion to Vallanes Organic Farm, where Eymundur Magnússon and Eygla Björk Ólafsdóttir have been organic farming since 1985. Explore their premises with a guided tour, learn about their focus on developing Icelandic grains and vegetables, and savour local products during a tasting.

#### Day 9: South Iceland

Discover a Realm of Fire and Ice

South Iceland is a region of stunning contrasts and extremes. Here, glaciers spill down from volcanic peaks, their icy tongues carving the land below. Jet-black sand beaches stretch along the coast, shaped by the interaction of fire and water. The region's windswept plains are dotted with moss-covered lava fields, remnants of ancient eruptions now blanketed in vibrant green.

This dynamic area is a testament to Iceland's ever-changing geology. Glacial rivers braid across the landscape, and cliffs rise steeply from the plains, offering nesting sites for thousands of seabirds. The interplay of volcanic heat and glacial ice gives rise to incredible natural wonders, making every turn in the landscape a moment of discovery.

#### Day 10: Heimaey, Vestmannaeyjar (Westman Islands)

Marvel at Volcanic Landscapes

Learn about the compelling history of this volcanically active area that has experienced two major eruptions in recent times.

1963 saw the formation of the island of Surtsey and the Eldfell eruption ten years later destroyed much of Heimaey, the largest of the Vestmannaeyjars and the only island here that is inhabited.

Enjoy a beautiful Zodiac cruise searching for the numerous species of seabirds, including the famous puffin, that nest in the steep rock faces along the ocean cliffs here.

#### Day 11: Reykjavík, Iceland

Wave a Fond Farewell

Complete your journey back in Reykjavik, disembarking in the morning.

Take one last chance to explore this special city where food, culture, and nightlife abound.

If you have the time, be sure to visit the National Culture House, which preserves treasures like the Poetic Edda and the Norse Sagas in their original manuscripts.

#### Please note:

Itineraries are subject to change.





# Wild Earth Travel

*Small Ships, Big Adventures*

**wildearth-travel.com**

**info@wildearth-travel.com**

## YOUR SHIP: EXPLORIS ONE

<b>YOUR SHIP:</b>	<b>Exploris One</b>
<b>VESSEL TYPE:</b>	<b>Expedition Cruise</b>
<b>LENGTH:</b>	<b>108 metres / 354 feet</b>
<b>PASSENGER CAPACITY:</b>	<b>144</b>
<b>BUILT/REFURBISHED:</b>	<b>1989/2018/2023</b>

Capacity for 144 passengers

Purpose-built for expedition travel

Design combines bold exploration with relaxed comfort and elegance

Well-suited for polar, temperate, and tropical environments

Life on Board

Food and Drink

Aboard the Exploris One, dining is an adventure! Top chefs craft dishes blending local flavours with international favourites, served in cozy open-seating spaces--indoors or al fresco. Start your day with hearty breakfasts and lunches to fuel your explorations. At dinner, savour globally inspired a la carte meals catering to seafood lovers, vegetarians, and everyone in between--don't forget the freshly made desserts! Dietary needs? Our team's got you covered with advance notice. With 24/7 beverages, from specialty coffee to fine wine, from beer to cocktails, every bite and sip celebrates your journey. Bon appetit!

Life on Board

Wake up aboard the Exploris One, where breathtaking ocean views from your cabin spark your inner poet. This intimate ship,

with space for 144 adventurers is designed to take you to the planet's most remote corners in style. Blending cozy comforts with epic exploration, it's perfect for you thrill-seekers that don't want to leave your barista behind. Learn from our expert expedition team, known for their deep knowledge and quirky charm. Spot seabirds from panoramic decks, enjoy inspiring talks, hands-on workshops, live music, or simply unwind in the ship's welcoming spaces.

From Ship to Shore

Heading ashore on the Exploris One is part of the adventure! With a fleet of trusty Zodiacs, you'll easily reach remote beaches, wildlife hotspots, and stunning coastlines. Designed for exploration, these versatile crafts get you right into the action. Our expert team ensures smooth, safe transfers, so you can focus on the thrill of discovery. Whether stepping onto untouched shores or cruising past playful seals, the journey is as exciting as the destination. On the Exploris One, every shore excursion is an adventure waiting to unfold!

Facilities

The Explorer's Table - Grand Restaurant

Enjoy exceptional dining in a spacious setting where gourmet meals and regional specialties are served with care and creativity.

The Outside Grill

Savour fresh-grilled favourites while taking in stunning views and the invigorating sea breeze on this open-air deck dining space.

Learning Lounge

Engage with experts and fellow travellers in this comfortable venue designed for insightful presentations and enriching talks.

Wild Earth Travel  
*Small Ships, Big Adventures*

**0800 945 3327** (within New Zealand) | +64 (0) 3 365 1355 | **1800 107 715** (within Australia)

info@wildearth-travel.com | wildearth-travel.com

# Wild Earth Travel

*Small Ships, Big Adventures*

**wildearth-travel.com**

**info@wildearth-travel.com**

## Main Lounge

Relax and socialize in this welcoming hub, perfect for unwinding, sharing stories, or enjoying evening entertainment.

## Observation Lounge

Take in sweeping views and quiet contemplation in this serene space.

## Fitness Centre

Stay active in the fully equipped fitness area, featuring modern equipment and ample space to maintain your workout routine while at sea.

## Sauna

Recharge and unwind in the soothing warmth of our on-board sauna, perfect after a day of exploration.

## Massage Room

Massages offered to provide relaxation and comfort, with appointments available throughout each journey.

## Two Outdoor Jacuzzis

Soak in warm, bubbling waters while enjoying expansive views and refreshing ocean breezes.

## Gift Shop

Browse a selection of unique items and essentials, perfect for souvenirs or travel needs.

## \_Additional Facilities\_

Panoramic bridge

Bridge deck

Elevators to all decks

Steam Room

Complimentary launderette

Reception

Ready room

Medical centre



ical centre

**Wild Earth Travel**

*Small Ships, Big Adventures*

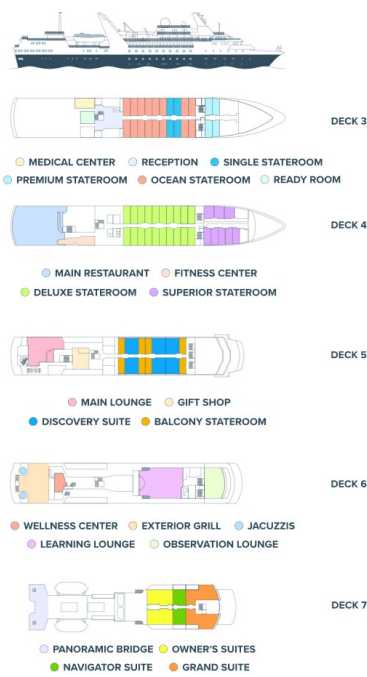
**0800 945 3327** (within New Zealand) | +64 (0) 3 365 1355 | **1800 107 715** (within Australia)

info@wildearth-travel.com | **wildearth-travel.com**





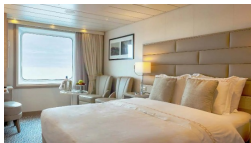
INSIDE YOUR SHIP



Cabin Category 1



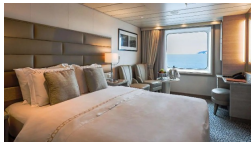
Cabin Category 2



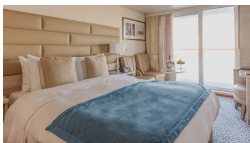
Cabin Category 3



Cabin Category 4



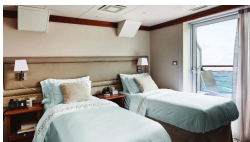
Cabin Category 5



Cabin Category 6



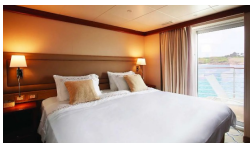
Cabin Category 7



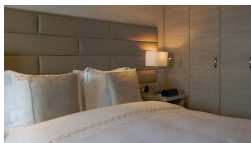
Cabin Category 8



Cabin Category 9



Cabin Category A





## PRICING

03-Jul-2026 to 13-Jul-2026

Cabin Category 1	12995 USD pp
Cabin Category 2	13495 USD pp
Cabin Category 3	13995 USD pp
Cabin Category 4	14895 USD pp
Cabin Category 5	15895 USD pp
Cabin Category 6	17395 USD pp
Cabin Category 7	17895 USD pp
Cabin Category 8	19395 USD pp
Cabin Category A	19995 USD pp
Cabin Category 9	21195 USD pp