

# Wild Earth Travel

*Small Ships, Big Adventures*

**wildearth-travel.com**

**info@wildearth-travel.com**

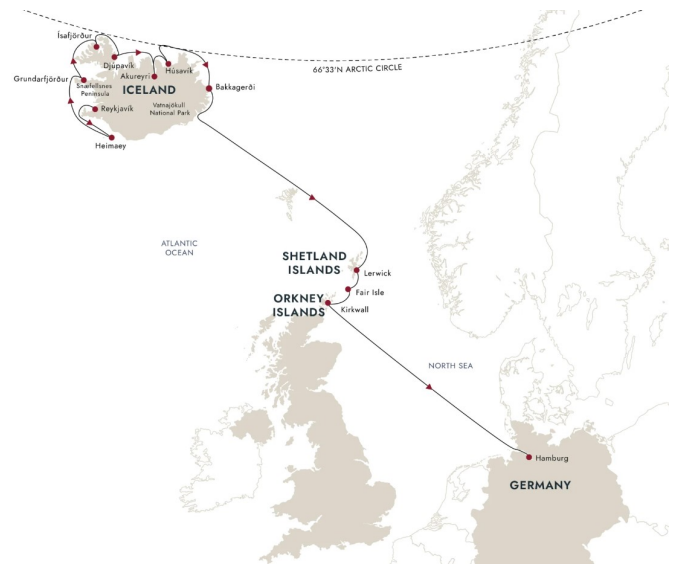
## ICELAND AND BEYOND - REYKJAVIK TO HAMBURG VIA SCOTLAND'S NORTHERN ISLES

### Iceland's raw natural beauty

In stylish Reykjavik, you'll get a taste of modern Iceland, before setting sail for a half circumnavigation of the land of fire and ice. Discover the country's starkly beautiful scenery - with active volcanoes, geysers, glaciers, mountains and waterfalls, and encounter iconic wildlife.

### Remote Scottish isles

In the Shetland Islands and Orkney, you'll experience windswept beauty, rich island culture and deep-rooted history. Visit Iron Age villages, Viking-influenced towns, and islands where birdlife thrives. Your adventure ends in Hamburg, Germany's great port city.



### ITINERARY

#### DAY 1 Cosmopolitan Reykjavik

Discover Iceland's modern capital

Your expedition cruise starts in Reykjavik - a laid-back city of art, culture and history. It's well worth spending some time getting to know this delightful capital.

Take a stroll along Laugavegur with its boutiques and outdoor shops, gaze in awe at the striking Hallgrímskirkja

Church, and drop in on the fascinating Reykjavik Art Museum.

Your expedition ship awaits you in Reykjavik Harbour. After being welcomed aboard and collecting your complimentary expedition jacket, it's time to settle

Wild Earth Travel

*Small Ships, Big Adventures*

**0800 945 3327** (within New Zealand) | +64 (0) 3 365 1355 | **1800 107 715** (within Australia)

info@wildearth-travel.com | **wildearth-travel.com**

# Wild Earth Travel

*Small Ships, Big Adventures*

**wildearth-travel.com**

**info@wildearth-travel.com**

into your cabin before enjoying your first dinner aboard.

If you have the time, we recommend booking a Pre-Programme with us and discovering some of Iceland's natural highlights before your cruise begins.

## DAY 2 Heimaey's explosive past

Discover the town that defied a volcano

Heimaey is the only inhabited island in the Westman Islands, found off the south coast of Iceland. It has a fascinating history, and still bears the scars of a powerful volcanic eruption that nearly destroyed the island.

Visit Eldheimar, a museum that features an excavated home frozen in time, and learn more about the eruption and its aftermath. Don't miss climbing Mount Eldfell - at the volcano's summit, you'll have incredible views of the town below.

## DAY 3 Charming Grundarfjörður

Gateway to spectacular Snæfellsnes

The majestic Kirkjufell mountain, one of the best-known landmarks of Iceland, rises just two miles west of the small harbour of Grundarfjörður, a quaint fishing town in Breiðafjörður bay.

Nearby lies Snæfellsnes Peninsula National Park, with the striking, ice-capped Snæfellsjökull volcano at the peninsula's western tip. It's nicknamed 'Little Iceland' for the array of landscapes.

At the national park, you can visit Djupalónssandur's black sand beach and the Saxhóll crater, or take a guided underground tour along a gigantic lava tube.

## DAY 4 Picturesque Ísafjörður

Explore Westfjords' beautiful harbourside town

Flanked by towering mountains on all sides, Ísafjörður is a nearly perfect natural harbour and an excellent gateway to the Westfjords region. Stroll around to see the architecture, shop for a variety of local handicrafts and view some of the oldest houses in Iceland.

One of these historic 18th century buildings is home to Westfjords Heritage Museum, where you can learn about the maritime past of this fascinating port. Or if you prefer something more energetic, you could take the steep hike up to Naustahvílf - the Troll's Throne. You'll be rewarded for your efforts at the top by the stunning panoramic view.

## DAY 5 Djúpavík's old factory

Explore a ghostly factory and hike in magical surroundings

The remote village of Djúpavík, at the edge of the Westfjords, has an eerie charm. A vast abandoned herring factory contrasts with a stunning rural setting. A guided tour of the old herring factory should not be missed. Inside its cavernous interior, huge machines rust away quietly, and the everyday objects of the workers sit on desks untouched.

Explore the magical surroundings here on foot and take a short, invigorating hike to the waterfall just above the old factory. Looking down onto the shore, you may spot the old rusting ship from a previous era - this really is a place of contrasts.

## DAY 6 Akureyri and Goðafoss

See dramatic moonscapes and waterfalls

Gaze at snowcapped peaks as we cruise into Eyjafjörður, Iceland's longest fjord. Together with neighbouring Skjalfandi bay, it's one of the best places in Europe to spot whales.

Wild Earth Travel

*Small Ships, Big Adventures*

**0800 945 3327** (within New Zealand) | +64 (0) 3 365 1355 | **1800 107 715** (within Australia)

info@wildearth-travel.com | **wildearth-travel.com**



# Wild Earth Travel

*Small Ships, Big Adventures*



**wildearth-travel.com**

**info@wildearth-travel.com**

Iceland's so-called 'Northern Capital', Akureyri sits at the fjord head. Here, you can enjoy the oasis of a botanical garden and visit local eateries and museums.

A little further afield, witness the picturesque Goðafoss waterfall, where turquoise waters pound against black rocks. You'll witness geology come to life around Lake Mývatn, an active volcanic area and one of the few places to see the Mid-Atlantic Ridge up close.

## DAY 7 Húsavík and the Arctic Circle

Cross the Arctic Circle and go whale watching

Húsavík is a pleasant small town famous for its whale-watching opportunities, and we'll be calling here in the morning. The town looks out over Skjalfandi bay, which enjoys visits from humpback and minke whales, white-beaked dolphins, harbour porpoises and occasionally blue whales. If you're lucky, you might see one or more of these giants at sea, and you can learn more about them at Húsavík's Whale Museum.

Húsavík is also regarded as the gateway to many of the highlights of the north, including Jökulsárgljúfur National Park, the waterfall of Dettifoss, and the horseshoe-shaped valley of Ásbyrgi, which according to Icelandic myth, was made by the eight-legged horse of Odin. Later, we'll sail along the coast of Grimsey island without landing, passing across the Arctic Circle as we do so, before continuing to our next destination.

## DAY 8 Tiny Bakkagerði

Explore a place beloved of puffins and elves

Your Iceland expedition cruise continues to Bakkagerði, a tiny, remote settlement. According to folklore, Bakkagerði is inhabited by a large population of local land spirits or elves, known as huldufolk, meaning 'hidden people'. Walk around town to explore this magical place.

A popular hiking area, here you can walk through lush, green valleys and gorgeous scenery among colourful rhyolite rocks. In season, the coastal cliffs are home to fulmars, kittiwakes, eiders and puffins.

## DAY 9 Vatnajökull cruising

See the second-largest ice cap in Europe

Leaving the land of ice and fire and heading towards the British Isles, if conditions allow, we hope to cruise by and admire Vatnajökull, the second-largest ice cap in Europe.

Set in Vatnajökull National Park, the ice cap is the largest in Europe by volume and area. Given its unique natural characteristics, it was declared a UNESCO World Heritage Site in 2019.

As you explore, your Expedition Team will help you understand more about how climate change impacts glaciers in Iceland and beyond.

## DAY 10 At sea

Relax and recharge with a day at sea

Relax and enjoy a day at sea as we sail towards Lerwick in the Shetlands Islands.

Socialise with your fellow travellers in the Explorer Lounge & Bar, and swap stories of your adventures so far. Keep your eyes peeled while on deck for marine life and seabirds - you can even chill out in the hot tub as you do so.

Or why not listen to some lectures from the Expedition Team and find out more about what lies ahead in the British Isles.

## DAY 11 Lerwick's past and present

Wild Earth Travel

*Small Ships, Big Adventures*

**0800 945 3327** (within New Zealand) | +64 (0) 3 365 1355 | **1800 107 715** (within Australia)

info@wildearth-travel.com | wildearth-travel.com

# Wild Earth Travel

*Small Ships, Big Adventures*



**wildearth-travel.com**

**info@wildearth-travel.com**

Discover Scotland's most northerly inhabited isles

Today we'll dock alongside Lerwick, the capital of the Shetland Islands. Set in stunning scenery, we'll spend the day exploring this friendly, Victorian-influenced fishing town.

Navigate the narrow lanes on foot to discover little shops selling local whiskies, woollen sweaters and fudge. By the old waterfront, you'll find the Shetland Museum, charting the area's rich history. Nearby you can see Fort Charlotte and the regal Town Hall.

The wider island is home to remarkable Iron Age villages and the Shetland Croft House Museum, where you'll learn about the hard life of the local crofters.

## DAY 12 Far-flung Fair Isle

A scenic stop for bird lovers

Your cruise continues to the remote Fair Isle, known for its birds and knitwear.

A magnet for birders and wildlife photographers, the island is home to 27 bird species. It's a vital stop for migrating seabirds, drawn to the red sandstone cliffs, green fields and moors.

We'll attempt to land so you can join a clifftop hike to a spectacularly sited lighthouse with the Expedition Team. Gain fascinating insights into the life and history of the 65-strong island community at the local museum. You can support Fair Islanders by buying genuine Fair Isle knitwear direct from local makers.

If landing isn't possible, the scenic cruising is just as spectacular.

## DAY 13 Highlights of Orkney

Learn about Kirkwall's Norse heritage

Today we cruise to the Orkney Islands' largest town. You'll explore Kirkwall, the vibrant, Viking-influenced capital of the Orkneys that's still compact enough to cover on foot.

Visit the regal St Magnus Cathedral, made from distinctive local red sandstone, and the adjacent Earl's Palace to see the stone ruins of this once-grand Renaissance building. The Neolithic settlement of Scara Brae is also only a bus ride away.

Whisky aficionados will enjoy Kirkwall's Highland Park and Scapa distilleries for their sublime single malts. If you fancy something different, Orkney Distillery produces gin made from local Orcadian botanicals.

## DAY 14 A final day at sea

Reflect as you head towards Germany

Enjoy a final day at sea as you cruise from Scotland to Germany.

If you haven't already, today is a great day to make the most of the ship's facilities. Relax and enjoy the panoramic sauna or on-deck hot tubs. Work out in the fitness room or drink in the views from the observation decks. You can also enjoy the company of fellow explorers over drinks in the Explorer Lounge & Bar and reflect on the wonderful voyage you've had.

## DAY 15 Germany's Hanseatic treasure

End your cruise in Germany's second city

Your expedition cruise comes to an end as we arrive in Hamburg, the second-largest city in Germany and one of the greenest urban areas in Europe.

There's much to see and do in Hamburg. If you have time, you'll find many attractions in the Altstadt district, including the St Nikolai Memorial and the historic street of Deichstraße.

Wild Earth Travel

*Small Ships, Big Adventures*

**0800 945 3327** (within New Zealand) | +64 (0) 3 365 1355 | **1800 107 715** (within Australia)

info@wildearth-travel.com | wildearth-travel.com





# Wild Earth Travel

*Small Ships, Big Adventures*

**wildearth-travel.com**

**info@wildearth-travel.com**

Hamburg is also home to UNESCO World Heritage Sites, including Chilehaus, and the world's largest historic warehouse complex in Speicherstadt. Art lovers should head to Kunsthalle, the nation's foremost art museum.

#### Please Note:

Itineraries are subject to change.

**Wild Earth Travel**

*Small Ships, Big Adventures*

**0800 945 3327** (within New Zealand) | +64 (0) 3 365 1355 | **1800 107 715** (within Australia)

info@wildearth-travel.com | **wildearth-travel.com**

# Wild Earth Travel

*Small Ships, Big Adventures*

**wildearth-travel.com**

**info@wildearth-travel.com**

## YOUR SHIP: SPITSBERGEN

<b>YOUR SHIP:</b>	<b>Spitsbergen</b>
<b>VESSEL TYPE:</b>	<b>Expedition</b>
<b>LENGTH:</b>	<b>100 metres</b>
<b>PASSENGER CAPACITY:</b>	<b>335</b>
<b>BUILT/REFURBISHED:</b>	<b>2009 / 2016</b>

MS Spitsbergen is named after the crown jewel of Arctic Norway - the Svalbard archipelago and its biggest island, Spitsbergen. After complete reconstruction, MS Spitsbergen joined the Hurtigruten fleet in 2016. The ship features high technical standards as well as comfortable, modern public areas and cabins. The vessel's fresh Scandinavian design reflects a colour palette derived from the sea. She is modern and environmentally progressive, and we plan further improvements that will reduce emissions and fuel consumption even more. The new ship's maneuverability and optimal size make her quite suitable for exploring polar waters.

### Expedition team on board

MS Spitsbergen has its own on-board Expedition Team and serves as a university at sea. Interesting lectures inside the ship as well as out on the sun deck make this an exciting and educational journey. Topics depend on the season and the waters we sail in. The Expedition Team host a lecture programme and evening gatherings daily. Out on deck you can participate in live points of interest to learn more about the nature, culture and other phenomena we encounter along the coast. In addition, the Expedition Team will introduce you to the

uniquely Norwegian notion of `friluftsliv` (outdoor life), and encourage you take part in `friluftsliv` hikes and activities during the journey.

Our dedicated Expedition Teams have one mission: to enhance your experience by engaging you and interpreting the nature, wildlife, and culture you encounter during the voyage. Read more about our Expedition Teams here.

### Ship facilities

Expedition Team - Explorer bar - Panoramic lounge - Explorer lounge - Compass Service Centre - Brygga bistro - Shop - Torget main dining - Wi-Fi - Sauna - Fitness room - Lift - Hot tub - Guest launderette - Panoramic deck 8 - Outside bar for events, decks 7 & 8



decks 7 & 8

Wild Earth Travel

*Small Ships, Big Adventures*

**0800 945 3327** (within New Zealand) | +64 (0) 3 365 1355 | **1800 107 715** (within Australia)

info@wildearth-travel.com | wildearth-travel.com



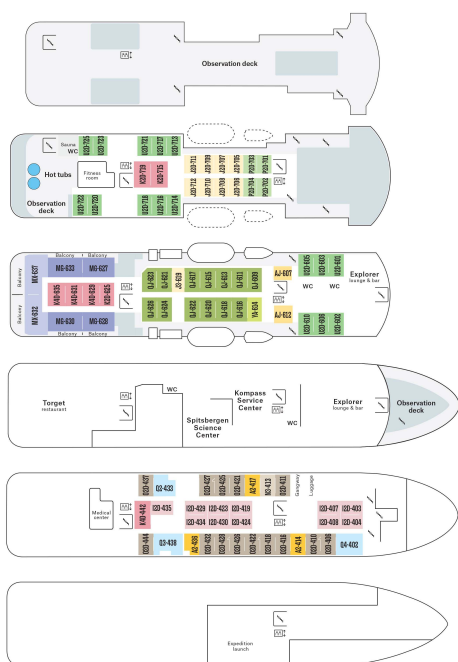
# Wild Earth Travel

*Small Ships, Big Adventures*

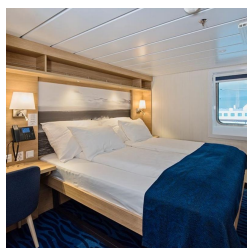
[wildearth-travel.com](http://wildearth-travel.com)

[info@wildearth-travel.com](mailto:info@wildearth-travel.com)

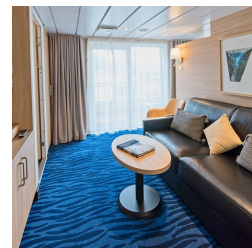
## INSIDE YOUR SHIP



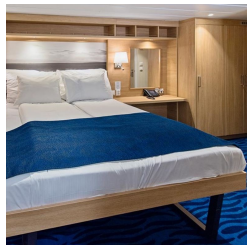
Arctic Superior. From



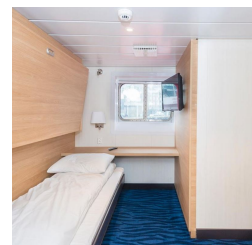
Expedition Suite. From



Polar Inside. From



Polar Outside. From



Wild Earth Travel  
*Small Ships, Big Adventures*

0800 945 3327 (within New Zealand) | +64 (0) 3 365 1355 | 1800 107 715 (within Australia)

[info@wildearth-travel.com](mailto:info@wildearth-travel.com) | [wildearth-travel.com](http://wildearth-travel.com)

# Wild Earth Travel

*Small Ships, Big Adventures*

**wildearth-travel.com**

**info@wildearth-travel.com**

## PRICING

### 22-Sep-2025 to 06-Oct-2025

Polar Inside. From	9750 AUD pp
Polar Outside. From	11407 AUD pp
Arctic Superior. From	12674 AUD pp
Expedition Suite. From	16574 AUD pp

### 21-Sep-2026 to 05-Oct-2026

Polar Inside. From	12379 AUD pp
Polar Outside. From	14484 AUD pp
Arctic Superior. From	16093 AUD pp
Expedition Suite. From	21045 AUD pp

Wild Earth Travel

*Small Ships, Big Adventures*

**0800 945 3327** (within New Zealand) | +64 (0) 3 365 1355 | **1800 107 715** (within Australia)

info@wildearth-travel.com | **wildearth-travel.com**