



# Wild Earth Travel

*Small Ships, Big Adventures*



**wildearth-travel.com**

**info@wildearth-travel.com**

## IN THE ICE OF THE ARCTIC, FROM GREENLAND TO SVALBARD LUXURY EXPEDITION

To sail to the lands beyond the Arctic Circle is to push the boundaries of exploration in the wake of those who made discovering the polar regions their life's mission. With humility, you will set a course for the north-east of Greenland, inaccessible to traditional ships in early summer, before cruising to Svalbard and its untouched landscapes. Aboard Le Commandant Charcot, a marvel of technology, you will be amazed by the opportunities for guided exploration in these remote parts. You will progress through one of the hardest to reach areas in the Far North.

On your journey, the Ammassalik, Blosseville and Ittoqqortoormiit regions reveal mythical places associated with the history of the discovery of the Arctic - places where the names Paul-Emile Victor, Jules de Blosseville and Jean-Baptiste Charcot still resound.

To the north-east of Greenland, you will sail through the drifting ice floes of the North Pole and continue your exploration in the heart of immaculate scenery. The sea ice reveals itself in all its forms. Marvel at the subtle light changes on the ice.

Your route then leads eastward, towards Svalbard. As you progress through this polar landscape, Nordaustlandet (North East Land) will display Europe's largest ice cap and some of its most majestic fjords. You will cross the frozen expanses of the Hinlopen Strait, where the contours of the glaciers shape the horizon, and you will get up close to monumental basalt cliffs. In the Sørøst-Svalbard Nature Reserve, classed as an Important

Bird Area, the ice-cloaked arid spaces are also home to cetaceans and Svalbard reindeer.

Whether from the exterior decks of your ship, during an outing in an inflatable dinghy or a kayak, or during a hike near blue-tinged icebergs, you will have multiples opportunities to get to know this wild and stunning world a little better.

In extreme conditions, at the end of spring when ice dots the barren landscapes, these remote parts reveal themselves to travellers. Despite the harsh climate and environment, the wildlife thrives here, offering the humble and patient observer the most wonderful of rewards.

Find out more about the world of Le Commandant Charcot here!



Wild Earth Travel  
*Small Ships, Big Adventures*

**0800 945 3327** (within New Zealand) | +64 (0) 3 365 1355 | **1800 107 715** (within Australia)

info@wildearth-travel.com | **wildearth-travel.com**



**Wild Earth Travel**  
*Small Ships, Big Adventures*

**wildearth-travel.com**      **info@wildearth-travel.com**



arcot here!

## ITINERARY

### Day 1 REYKJAVÍK

Iceland's capital stretches along the edge of a vast bay in the west of the country. Perlan, the "Pearl of Reykjavik", a museum located on 'Oskjuhlíð hill, offers a panoramic view of the lush, green landscapes. A little further, one can easily spot the signpost showing the way to the evangelical Hallgrímskirkja church, and to the historical centre where one can stroll along the Skólavörðustígur and the Laugavegur, two lively streets with charming small shops. For some relaxation just outside of the city, visitors have the opportunity to visit the Reykjanes peninsula and its famous thermal lagoons of the Blue Lagoon.

### Day 2 SAILING THROUGH THE DENMARK STRAIT

Lying between Greenland and Iceland, the Denmark Strait was crossed for the

first time by the Vikings in the late 10th century, during Erik the Red's expeditions. In the Second World War, its waters were the theatre of a battle between the Kriegsmarine and the Royal Navy, on 24 May 1941. In the wintertime, extremely dense pack ice forms along the Greenlandic coasts and, while the Transpolar Drift sweeps icebergs along throughout the year, the strait is generally clear of ice during the summer. In the depths of the strait lies the world's largest waterfall, an undersea cataract formed by the difference in temperature between the cold waters of the Greenland Sea and the warmer waters of the Irminger Sea. Numerous cetacean species thrive in this rich ecosystem.

### Day 3 AMMASSALIK REGION

Still almost unknown just a century ago, the east coast of Greenland remains the most authentic and majestic region. Here, the alpine mountains merge intimately with the sea, while the fjords are adorned with high snow-capped peaks and drifting icebergs. Follow in the wake of Captain Jean-Baptiste Charcot's famous ship, the *Pourquoi Pas?*, which set off with its crew to discover Ammassalik, a small island of primitive and wild beauty where the Inuit people chose to live. The name of this island is a reference to the capelin, a small flamboyant silver coloured fish, whose presence in the thousands announces to inhabitants the return of spring. A surprising discovery in a spectacular setting.

### Day 4 BLOSSEVILLE COAST

Aboard your ship, follow in the footsteps of Jules Poret de Blosseville, a French explorer and sailor. In 1833, aboard *La Lilloise*, he set off to discover this isolated and unexplored part of eastern Greenland and gave French names to various sites on the coast. The adventure probably has an unfortunate outcome, since the crew was never found. This uninhabited territory, which now bears his name, lies to the south of Scoresby Sund. Surrounded by ice, icebergs and pieces of pack ice, Blosseville Coast is one of these wild and hard-to-reach places that very few people are lucky enough to explore.

### Day 5 ITTOQQORTOORMIIT REGION

On the East coast of Greenland, in the Ittoqqortoormiit region, you will have the rare opportunity of immersing yourself in the heart of isolated scenery and exploring the beauty of its landscapes. The high alpine mountains stand out in





the sky, revealing dark rock edges. The region is home to the longest fjord system in the world, Scoresby Sound. On the edge of the fjord, the eponymous village is considered one of the most remote inhabited places in the world. The colourful houses, so typical of Greenland, dot the landscape with small red, yellow and blue patches that stand out against the surrounding arid landscape. Immersing yourself in this region will allow you to discover the ancestral way of life of the last hunters of the polar region. This will be a veritable deep-dive into the lives of the Arctic's inhabitants.

#### Days 6 - 9 EXPLORATION OF NORTH-EAST GREENLAND

Set sail for North-East Greenland to immerse yourself further and up higher in the Arctic region to explore the unexpected riches of the sea ice, where traditional ships cannot travel at this time of the year. As the light shifts and the moods of the sky change, the different states of the ice and the infinite diversity of its textures create an exceptionally stunning tableau. With patience and humility, you will sail amid the pearl-white floating cathedrals and the ice carried by the Transpolar Drift. En route, icebergs have their journey halted by ice and pressure ridges reveal their sharp edges. In the midst of this icy vastness, beauty is found in the detail and the magic of the moment. In the realm of polar bears, Le Commandant Charcot is a reassuring cocoon built for polar exploration and offers you wonderful opportunities to observe these lords of the ice when you happen upon them. You may even get the chance to admire the moving sight of a mother and her cub travelling across the immaculate icy expanse.

#### Days 10 - 11 AT SEA ABOARD LE COMMANDANT CHARCOT

Spend exceptional moments sailing aboard Le Commandant Charcot, the world's first luxury polar exploration vessel and the first PC2-class polar cruise ship capable of sailing into the very heart of the ice, on seas and oceans which the frozen conditions render inaccessible to ordinary ships. Le Commandant Charcot is fitted with oceanographic and scientific equipment selected by a committee of experts. Take advantage of the on-board lectures and opportunities for discussion with these specialists to learn more about the poles. Participate in furthering scientific research with PONANT and let us discover together what these fascinating destinations have yet to reveal to us.

#### Days 12 - 13 NORDAUST-SVALBARD NATURE RESERVE

The Nordaust-Svalbard Nature Reserve has been protecting the northernmost and coldest part of the archipelago, Nordaustlandet (North East Land), since 1973. This vast polar desert covered by two ice caps is the second largest island in the Svalbard archipelago. Protected by the Gulf Stream, the fjords and cliffs in the west and north are home to large colonies of birds and walrus. The landscapes in the colder east and south are dominated by imposing glaciers that calve majestic icebergs in the vast Hinlopen Strait. Large colonies of thick-billed murre have taken up residence on the sheer cliffs. You may even get the chance to see a bear or an Arctic fox roaming in the vicinity.

#### Day 14 SAILING IN THE HINLOPEN STRAIT

Sailing in the Hinlopen Strait, in the heart of the Arctic Ocean, between the Norwegian islands of Spitsbergen and Nordaustlandet promises an unforgettable experience. This territory of the Nordaust-Svalbard Nature Reserve offers breathtaking panoramas, with magnificent basalt formations and the ice cap stretching as far as the eye can see, diving into the sea. The shore line cut by the fjords moving inland composes a magical landscape in which icebergs float here and there, the result of the calving of the surrounding glaciers. This place, today a popular spot to observe the seabirds nesting in the enormous cliffs, polar bears and walrus, was once intrinsically linked to the history of the whalers who frequented the region from the 17th century. Indeed, it was one of them, Thijmen Jacobsz Hinlopen, then director of a Dutch whaling company, who gave the strait its name. Later on, Russian trappers, European explorers, scientists and even mountaineers roamed this region, as hostile as it is sublime.

#### Day 15 SØRAUST-SVALBARD NATURE RESERVE

The Sørøst-Svalbard Nature Reserve is the second largest protected area in Norway. Established in 1973, this nature conservation area stretching over more than 21,000 km<sup>2</sup> will offer you stunning panoramas including coastal landscapes, rocky islets, mountain plateaux, vast tundra plains, and ice floes. With a little luck, you will be able to observe a wide variety of seabirds, given the site is listed as an Important Bird Area, as well as cetaceans, Svalbard reindeer, or even Arctic foxes. Among other things, Edgeoya Island is renowned for providing shelter to a number of polar bears during the breeding season.

#### Day 16 HORNSUND



# Wild Earth Travel

*Small Ships, Big Adventures*

**wildearth-travel.com**

**info@wildearth-travel.com**

Nestling between millennial glaciers and carved mountains, and considered to be "the crown of Arctic Norway", Spitsbergen is a place that never sees the night. Your ship will take you closer to this fascinating archipelago and, more particularly, the Hornsund fjord. Considered to be Svalbard's southernmost fjord, it is especially reputed to be its most stunning: at the end of its vast bay, 8 great glaciers slowly make their way down to the sea before giving way to the many icebergs elegantly drifting along its cold and mysterious waters.

## Day 17 LONGYEARBYEN, SPITSBERGEN

Longyearbyen is the capital of the Norwegian Svalbard archipelago, located on Svalbard's main island, and is the northernmost territorial capital on the planet. With winter temperatures dropping to below 40°C, the landscapes of this mining town are simply breathtaking. The glaciers, the mountains stretching as far as the eye can see and the untouched nature, make you feel like you're in completely unexplored territory.

### Please Note:

We are privileged guests in these extreme lands where we are at the mercy of weather and ice conditions. Our navigation, mainly in the fjords, will be determined by the type of ice we come across; as the fast ice must be preserved, we will take this factor into account from day to day in our itineraries. The sailing programme, outings, activities and observation of fauna cannot be guaranteed and are subject to weather and ice conditions. The experiences are unique and vary from day to day and for each departure. The Captain and the Expedition Leader will make every effort to ensure that your experience is as rich as possible, while respecting safety instructions and regulations imposed by the AECO.

Wild Earth Travel  
*Small Ships, Big Adventures*

**0800 945 3327** (within New Zealand) | +64 (0) 3 365 1355 | **1800 107 715** (within Australia)

info@wildearth-travel.com | **wildearth-travel.com**



## YOUR SHIP: LE COMMANDANT-CHARCOT

<b>YOUR SHIP:</b>	<b>Le Commandant-Charcot</b>
<b>VESSEL TYPE:</b>	<b>Polar Luxury Expedition</b>
<b>LENGTH:</b>	<b>149.9 meters</b>
<b>PASSENGER CAPACITY:</b>	<b>135 cabins</b>
<b>BUILT/REFURBISHED:</b>	<b>2018/2019</b>

Be the first aboard Le Commandant-Charcot, the world's luxury polar exploration vessel, and enjoy a unique sailing experience in the Arctic or Antarctic!

With its hybrid propulsion combining liquefied natural gas (LNG) and electric generators, Le Commandant-Charcot has been designed to minimise the environmental impact of travel to the furthest latitudes.

The decoration of the ship, imagined by two internationally renowned design and architecture firms - the studio of Jean-Philippe Nuel and Wilmotte & Associates - is designed to be in harmony with the environment. The approach is contemporary with the desire to create a warm and elegant setting; stone, wood and leather recall the natural environment in which the ship is sailing.

Equipped with just 135 staterooms including 31 suites with balconies and outside views, Le Commandant-Charcot welcomes you in an intimate and refined atmosphere. Outstanding gastronomy in the two restaurants, relaxation in the indoor pool surrounded by its winter garden, relaxation in the well-being area with sauna and Snow Room... Like on a private yacht, each of our guests is unique.

### PUBLIC AREAS

Le Commandant-Charcot has many common areas that are designed and equipped to meet all of your needs while preserving the intimacy of each passenger.

A 177 m<sup>2</sup> reception area includes: A reception/concierge desk, An expeditions desk, The ship's administrative services, The sales office, manned by our Hospitality & Travel Manager officer, Our boutique which sells clothing, jewellery, beauty products, postcards and various accessories, The image & photo desk.

The different lounges: A 302 m<sup>2</sup> main lounge including a 28 m<sup>2</sup> cigar lounge, a tea corner and a bar, with live music on selected evenings, A 400 m<sup>2</sup> panoramic bar and lounge, An open-air Bar.

The recreation spaces

Fitness & Beauty Corner: Fitness room: Elliptic, running machines, bicycles...

Beauty Corner: Hairdresser, Massage rooms, Sauna, Snow Room, Nail Shop.

Pool area: Indoor Pool and winter garden - Outdoor Pool

Theatre: Capacity: 270-276 - Main show room for conferences and live entertainment on selected evenings - State-of-the-art audio and video technology.

Leisure area: Public areas - Library - Medical centre.

16 Zodiac®.





Wild Earth Travel

*Small Ships, Big Adventures*

[wildearth-travel.com](http://wildearth-travel.com)

[info@wildearth-travel.com](mailto:info@wildearth-travel.com)



16 Zodiac®.

Wild Earth Travel  
*Small Ships, Big Adventures*

0800 945 3327 (within New Zealand) | +64 (0) 3 365 1355 | 1800 107 715 (within Australia)

[info@wildearth-travel.com](mailto:info@wildearth-travel.com) | [wildearth-travel.com](http://wildearth-travel.com)

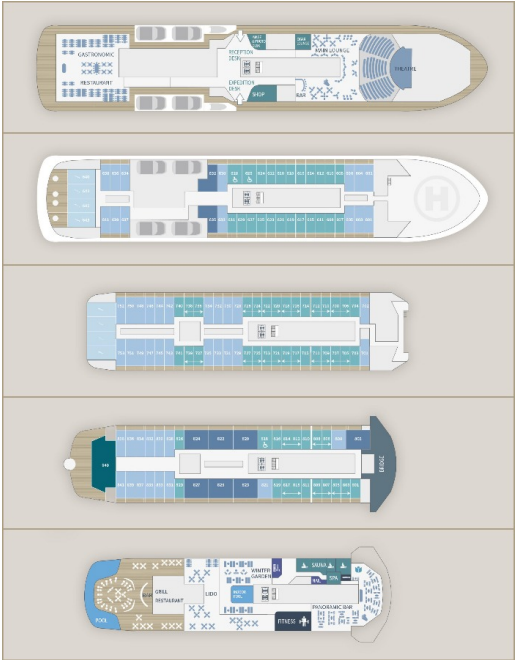


**Wild Earth Travel**  
*Small Ships, Big Adventures*

**wildearth-travel.com**

**info@wildearth-travel.com**

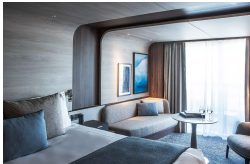
**INSIDE YOUR SHIP**



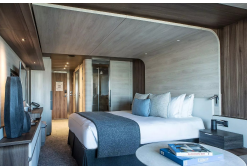
**Deluxe Suite Deck 6**



**Deluxe Suite Deck 7**



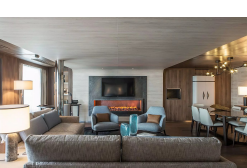
**Deluxe Suite Deck 8**



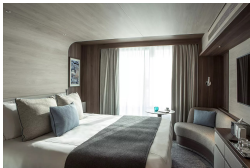
**Grand Prestige Suite**



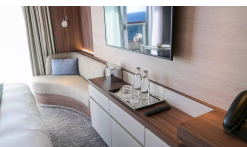
**Owner's Suite**



**Prestige Stateroom Deck 6**



**Prestige Stateroom Deck 7**



**Prestige Stateroom Deck 8**



**Wild Earth Travel**  
*Small Ships, Big Adventures*

**0800 945 3327** (within New Zealand) | +64 (0) 3 365 1355 | **1800 107 715** (within Australia)

info@wildearth-travel.com | wildearth-travel.com



PRICING

28-May-2026 to 13-Jun-2026

Prestige Stateroom Deck 6	49370 AUD pp
Prestige Stateroom Deck 7	50320 AUD pp
Prestige Stateroom Deck 8	51270 AUD pp
Deluxe Suite Deck 6	52700 AUD pp
Deluxe Suite Deck 7	55100 AUD pp
Deluxe Suite Deck 8	57000 AUD pp
Prestige Suite Deck 7	73210 AUD pp
Prestige Suite Deck 8	75590 AUD pp
Grand Prestige Suite	77990 AUD pp
Privilege Suite Deck 8	82750 AUD pp
Suite Duplex	113760 AUD pp
Owner's Suite	157410 AUD pp

13-Jun-2026 to 29-Jun-2026

Prestige Stateroom Deck 6	49370 AUD pp
Prestige Stateroom Deck 7	50320 AUD pp
Prestige Stateroom Deck 8	51270 AUD pp
Deluxe Suite Deck 6	52700 AUD pp
Deluxe Suite Deck 7	55100 AUD pp
Deluxe Suite Deck 8	57000 AUD pp
Prestige Suite Deck 7	73210 AUD pp
Prestige Suite Deck 8	75590 AUD pp
Grand Prestige Suite	77990 AUD pp
Privilege Suite Deck 8	82750 AUD pp
Suite Duplex	113760 AUD pp
Owner's Suite	157410 AUD pp

ADDITIONAL CHARGES:

Port Taxes & Fees 1180 AUD pp





# Wild Earth Travel

*Small Ships, Big Adventures*



**wildearth-travel.com**

**info@wildearth-travel.com**

## UP TO 30% OFF - SPECIAL BONUS

Online prices reflect the current brochure fare savings of up to 30%. Prices may change based on demand. Terms and conditions apply. This special offer is subject to availability. Please contact us for more details.

Wild Earth Travel

*Small Ships, Big Adventures*

**0800 945 3327** (within New Zealand) | +64 (0) 3 365 1355 | **1800 107 715** (within Australia)

info@wildearth-travel.com | **wildearth-travel.com**