



Wild Earth Travel

Small Ships, Big Adventures

wildearth-travel.com

info@wildearth-travel.com

IBERIAN PENINSULA & SICILY - SPAIN, SICILY & MALTA LUXURY CRUISE

Sail along the Mediterranean shorelines and explore centuries of history during this exceptional journey between the eastern Spanish coast, and Sicily. During this 8-day cruise aboard *_Le Bougainville_*, you will be amazed by the Mediterranean and its civilisations, a crossroads of exchange, the cradle of a unique way of life weaved together from fascinating cultures.

Throughout your journey, you will benefit from an excursion included per person per port of call, to choose from a selection offered by PONANT. During this cruise, attend a cavalcade at a finca in Cartagena, visit the Miro Foundation in Palma, or explore the history-laden streets of the Casbah, the jewel of Algiers' heritage. The diversity of experiences on offer promises you intense and varied moments (to discover the full range of excursions, go to the itinerary tab).

Malaga, a sun-kissed city on the *_Costa del Sol_* and the birthplace of famous painter Pablo Picasso, marks the start of your Mediterranean musical odyssey.

Andalusia soon makes way for Murcia. You will arrive in Cartagena, a former Roman colony where there is still a majestic amphitheatre. As you roam the city, you will discover the many monuments reflecting its numerous influences and rich history.

After a call at Valencia, with its remarkable architectural splendours, you will sail to Palma de Mallorca, one of the jewels of the Balearic Archipelago, known for its four main

islands that are charming, picturesque and discreet, sitting atop the clear waters of the Mediterranean like grains of sand

You will continue your visit to the Balearic Islands with the discovery of the well-preserved Menorca. Mahon, the island's capital, will charm you with its age-old history and its exceptional port, which, at 6 kilometres (3.7 miles) long, is the biggest in the Mediterranean!

You will head for Sicily and Trapani. 750 metres (2,460 feet) up, perched on a high triangular plateau sloping down to the sea, this medieval city is a labyrinth of polished, paved narrow streets and alleyways with superb views over the Aegadian Islands and the valley.

Your cruise will come to an end in Valletta, capital of the island of Malta and former stronghold of the Knights of the Order of Malta.

Wild Earth Travel

Small Ships, Big Adventures

0800 945 3327 (within New Zealand) | +64 (0) 3 365 1355 | **1800 107 715** (within Australia)

info@wildearth-travel.com | **wildearth-travel.com**

Wild Earth Travel

Small Ships, Big Adventures

wildearth-travel.com

info@wildearth-travel.com



r of Malta.

ITINERARY

Day 1 - Malaga

A historical and festive town, Malaga is located in Andalusia, on the Costa del Sol. Between the marina and the beaches, the seaside promenade of La Farola offers an ideal setting for strolling and relaxing. Set slightly further back, the Malagueta bullring is one of the emblematic sites of the city. From the hill overlooking the old town, one can see Gibralfaro castle and the Alcazaba, two fortified ensembles rising out from the cypresses and maritime pines. To visit Pablo Picasso's birthplace, you will go first to the courtly plaza de la Merced. A few streets back from here, you can explore the museum dedicated to the artist, in the Buenavista palace.

Day 2 - Cartagena

Surrounded by hills, the natural site of the Bay of Cartagena presided over the fate of this former fortress which has been home to the greatest European civilisations. Today, these Phoenician, Roman, Carthaginian, Moorish and Christian influences form a rich architectural heritage. Its Roman theatre is one of the most significant and best conserved in Spain. You will also be able to cross the landscapes of vines and citrus groves stretching endlessly towards Murcia, to visit this dynamic regional capital.

Day 3 - Valencia

Valencia - the city of Art and Sciences. Two hearts beat in this Spanish city: one is modern, avantgarde and almost futuristic; the other is more provincial, more traditional and nostalgic. Valencia has the temperament of a great Mediterranean city whose wide avenues form a border around the old town. The city has an abundance of architectural styles that coexist harmoniously, but above all it resolutely embraces the 21st Century with the futuristic structures of its Agora congress centre and City of Arts and Sciences, emerging from a crystal blue pool.

Day 4 - Palma de Mallorca, Balearic Islands

Palma de Mallorca will reveal its many treasures: idyllic coves, majestic limestone cliffs that plunge into the clear sapphire- and turquoise-coloured waters of the Mediterranean, and vast plains planted with almond trees, olive trees and vineyards. When your ship calls at the capital of the Balearic Islands, take a walk to discover its emblematic monuments, such as its famous cathedral, and amble through its old streets. Here, like a painting, the island's historical heritage forms a backdrop to the lively and warm cosmopolitan atmosphere of the Mediterranean.

Day 5 - Mahon, Balearic Islands

Wild Earth Travel

Small Ships, Big Adventures

0800 945 3327 (within New Zealand) | +64 (0) 3 365 1355 | 1800 107 715 (within Australia)

info@wildearth-travel.com | wildearth-travel.com



Wild Earth Travel

Small Ships, Big Adventures

wildearth-travel.com

info@wildearth-travel.com

You will be welcomed by the colourful houses of Mahon, its narrow streets and pretty squares that appear as you stroll around this richly contrasting city. Mahon reveals its different neighbourhoods, alternating between monuments, villas and white buildings. Discover the Santa Maria church, a building of neo-gothic inspiration, rebuilt in the 18th Century. It is worth a visit to see its monumental organ with more than 3,000 pipes and four keyboards. Around the Carmen church you will find a local market, full of stands selling avarcas, typical Menorcan sandals originally made by peasants. Let yourself fall under the spell of this Mediterranean treasure.

Day 6 - At sea

During your journey at sea, make the most of the many services and activities on board. Treat yourself to a moment of relaxation in the spa or stay in shape in the fitness centre. Depending on the season, let yourself be tempted by the swimming pool or a spot of sunbathing. This journey without a port of call will also be an opportunity to enjoy the conferences or shows proposed on board, depending on the activities offered, or to do some shopping in the boutique or to meet the PONANT photographers in their dedicated space. As for lovers of the open sea, they will be able to visit the ship's upper deck to admire the spectacle of the waves and perhaps be lucky enough to observe marine species. A truly enchanted interlude, combining comfort, rest and entertainment.

Day 7 - Trapani, Sicily

Bathed in the cobalt waters of the Tyrrhenian sea, Trapani is the former port of the Greek city of Erice, boasting a privileged natural position in western Sicily. As you wander through its little streets, you will discover a secular cultural heritage, bearing witness to the many influences of civilisations that came here: San Lorenzo Cathedral, Maria Santissima Annunziata sanctuary, the fountain of Triton. On the shaded restaurant terraces, savour some fresh fish from the morning's catch. Or else you can opt for a seafood couscous, a culinary legacy from their Arab neighbours.

Day 8 - Valletta

The whole of the Maltese capital Valletta is UNESCO World Heritage listed and occupies a peninsula in the north-east of the island. From the fountain of Tritons to Saint-Elme fort, there are as many majestic streets as there are narrow staircase vennels to explore. The painted loggia and carved corbels on the tall houses will accompany you in your explorations, and you'll rarely be bothered by traffic. You can visit the Grandmasters palace decorated with coats of arms and frescoes. Saint-John's cathedral and the ramparts which have guarded the city since the 16th century are also among the most emblematic sites of the city. Arranged in terraces, the Barrakka Gardens will punctuate your promenade with a green and floral experience.

Please note:

Itineraries are subject to change.

Wild Earth Travel

Small Ships, Big Adventures

0800 945 3327 (within New Zealand) | +64 (0) 3 365 1355 | **1800 107 715** (within Australia)

info@wildearth-travel.com | **wildearth-travel.com**



Wild Earth Travel

Small Ships, Big Adventures

wildearth-travel.com

info@wildearth-travel.com

YOUR SHIP: LE BOUGAINVILLE

YOUR SHIP: Le Bougainville

VESSEL TYPE: Luxury

LENGTH:

PASSENGER CAPACITY: 92 cabins

BUILT/REFURBISHED: 2017/2018

Featuring innovative and environmentally-friendly equipment, elegantly designed cabins, spacious suites with large windows, and lounge areas that open onto the outside, this new limited-capacity yacht boasting just 92 cabins and suites will offer you a truly unique cruising experience.

As the first ship in a new series that remains true to the Ponant spirit, Le Bougainville will embody the unique atmosphere that is the cruise line's hallmark: a subtle blend of refinement, intimacy and comfort.

Aboard this ship that flies the French flag, you will experience the incomparable pleasure of an intimate cruise, with the possibility of exploring an ever-increasing range of destinations in an ethnic-chic ambiance with luxury service.

Experience a luxurious setting where the accent is on authenticity and passion for travel.

RESTAURANTS

As it is an essential part of French culture, gastronomy will naturally have pride of place aboard this new ship. Through its two restaurants, Le Bougainville will invite you on a journey to elegance and epicureanism.

In a relaxed atmosphere, a first dining area located on Deck 3

and able to seat 70 will serve grilled meats daily, along with a variety of salads and desserts.

To the back of Deck 4, you will find a 260 m² panoramic restaurant which can accommodate all of our passengers in a single sitting. Designed differently to that on our other ships, this dining area, which opens onto the outside, will have a buffet of salads, desserts and cheeses at your disposal. Our discreet and attentive crew will provide table service for hot meals.

PUBLIC AREAS

Like Le Boreal and its sisterships, Le Bougainville has many common areas that are designed and equipped to meet all of your needs while preserving the intimacy of each passenger.

A 140 m² reception area includes:

A reception/concierge desk, An excursions desk, The ship's administrative services, The sales office, manned by our Guest Relations Officer, Our 50 m² boutique which sells clothing, jewellery, beauty products, postcards and various accessories, Toilets accessible to passengers with reduced mobility.

A new hydraulic platform with adjustable height provides: Easier boarding than on any other cruise ship, Easier Zodiac embarkation and disembarkation for expeditions, Easier access to the sea for swimming and practising various water sports such as kayaking or paddle-boarding.

A pool deck offering: A pool with a panoramic view, equipped with a counter-current swimming system, A pleasant solarium, An outdoor bar and lounge with armchairs and sofas.

A 200 m² main lounge which can accommodate all of our passengers to share convivial moments and to host activities organised during the day or evening.

Wild Earth Travel

Small Ships, Big Adventures

0800 945 3327 (within New Zealand) | +64 (0) 3 365 1355 | **1800 107 715** (within Australia)

info@wildearth-travel.com | wildearth-travel.com

Wild Earth Travel

Small Ships, Big Adventures

wildearth-travel.com

info@wildearth-travel.com

Lastly, a theatre that seats 188, equipped with: The latest sound and lighting technology, A LED wall as the stage backdrop, for the projection of high-resolution images and videos.



and videos.

Wild Earth Travel

Small Ships, Big Adventures

0800 945 3327 (within New Zealand) | +64 (0) 3 365 1355 | **1800 107 715** (within Australia)

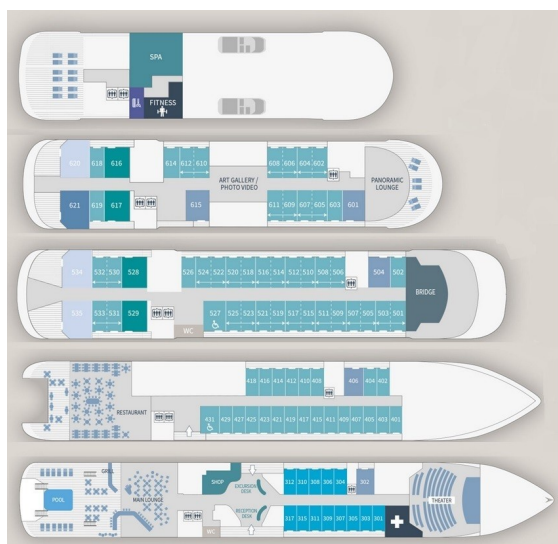
info@wildearth-travel.com | **wildearth-travel.com**



wildearth-travel.com

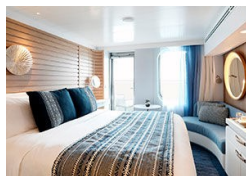
info@wildearth-travel.com

INSIDE YOUR SHIP

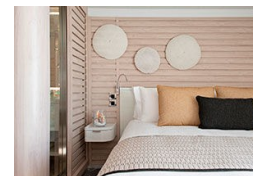


- Owner's Suite Deck 6
- Privilege Suites Deck 5-6
- Grand Deluxe Suites Deck 5-6
- Prestige Suites Deck 5-6
- Deluxe Suites Deck 5-6
- Prestige Cabins Deck 4-5-6
- Deluxe Cabins Deck 3

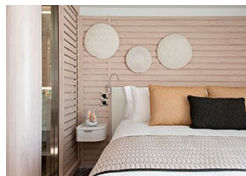
Deluxe Stateroom



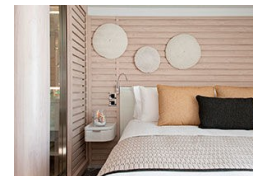
Deluxe Suite Deck 3



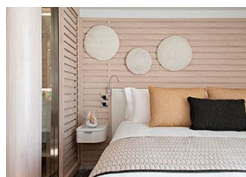
Deluxe Suite Deck 4



Deluxe Suite Deck 5



Deluxe Suite Deck 6



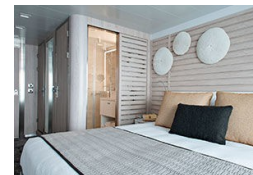
Grand Deluxe Suite Deck 5



Grand Deluxe Suite Deck 6



Prestige Deck 4





Wild Earth Travel

Small Ships, Big Adventures

wildearth-travel.com

info@wildearth-travel.com

PRICING

28-Apr-2026 to 05-May-2026

Deluxe Stateroom	6790 AUD pp
Prestige Deck 4	7140 AUD pp
Prestige Deck 5	7490 AUD pp
Prestige Deck 6	7920 AUD pp
Deluxe Suite Deck 3	12760 AUD pp
Deluxe Suite Deck 4	12760 AUD pp
Deluxe Suite Deck 5	12760 AUD pp
Deluxe Suite Deck 6	12760 AUD pp
Prestige Deck 5 Suite	14170 AUD pp
Prestige Deck 6 Suite	14520 AUD pp
Privilege Suite Deck 5	15220 AUD pp
Privilege Suite Deck 6	15220 AUD pp
Grand Deluxe Suite Deck 6	18380 AUD pp
Grand Deluxe Suite Deck 5	18380 AUD pp



Wild Earth Travel
Small Ships, Big Adventures

0800 945 3327 (within New Zealand) | +64 (0) 3 365 1355 | **1800 107 715** (within Australia)

info@wildearth-travel.com | **wildearth-travel.com**



Wild Earth Travel

Small Ships, Big Adventures

wildearth-travel.com

info@wildearth-travel.com

SPECIAL OFFERS

Up to 30% OFF! Prices online do not show the discounted rates. Terms and Conditions apply, special offer is subject to availability, please contact us for more details.

Wild Earth Travel

Small Ships, Big Adventures

0800 945 3327 (within New Zealand) | +64 (0) 3 365 1355 | **1800 107 715** (within Australia)

info@wildearth-travel.com | **wildearth-travel.com**