



# Wild Earth Travel

*Small Ships, Big Adventures*

**wildearth-travel.com**

**info@wildearth-travel.com**

## HOKKAIDO, ALEUTIAN ISLANDS AND ALASKA - A REAL EXPLORER'S TRILOGY FROM ASIA TO ALASKA

---

This cruise takes you beyond your wildest dreams along an extraordinary Pacific Ring of Fire route, igniting a pioneering spirit as it breathes life into terra incognita. Highlights include immersing in nature's diversity--home to cranes, whales, bears, and sea eagles--while volcanic landscapes showcase creation's raw power in stunning variety. From Hokkaido's rugged shores to the Aleutian Islands and Alaska's wild frontier, the journey offers authentic, inspiring glimpses into local life, with standout moments like cruising Katmai National Park and marveling at Aialik Glacier, blending untouched wilderness with captivating cultural insights.



Wild Earth Travel

*Small Ships, Big Adventures*

**0800 945 3327** (within New Zealand) | +64 (0) 3 365 1355 | **1800 107 715** (within Australia)

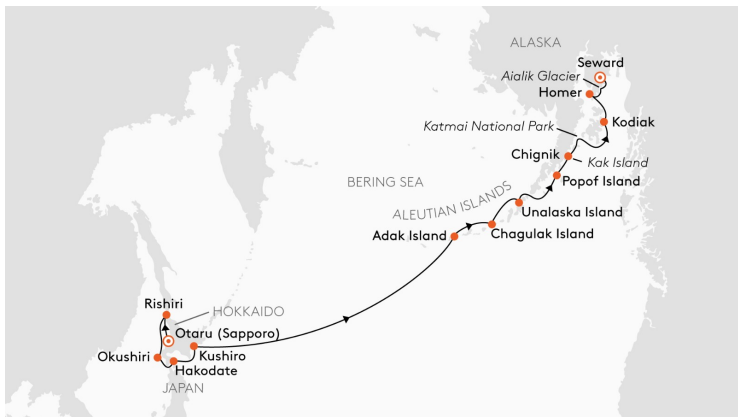
info@wildearth-travel.com | **wildearth-travel.com**

# Wild Earth Travel

*Small Ships, Big Adventures*

[wildearth-travel.com](http://wildearth-travel.com)

[info@wildearth-travel.com](mailto:info@wildearth-travel.com)



## ITINERARY

Sun, 21.06.2026 Otaru

(Sapporo)/Japan, departure 22.00 hrs

Mon, 22.06.2026 - Thu, 25.06.2026 Hokkaido/Japan

(Rishiri, Okushiri, Hakodate, Kushiro)

Fri, 26.06.2026 - Mon, 29.06.2026 Relaxation at sea

(crossing the International Date Line, 29.06 counts twice)

Tue, 30.06.2026 - Fri, 03.07.2026 Aleutian Islands/Alaska/USA

(Adak Island, cruising off Chagulak Island, Unalaska Island, Popof Island)

Sat, 04.07.2026 Alaska Peninsula

(Chignik, cruising off Kak Island)

In 1906, Roald Amundsen achieved the first complete passage of the Northwest Passage. Now, you too can take on this pioneering endeavour with the HANSEATIC inspiration. The first chapters of your expedition weeks lie along the coast of the Alaskan Peninsula. Cruising by Kak Island, the bird rock ignites your anticipation for upcoming adventures. "Strong wind" is the meaning of Chignik in the Alutiiq language. Gain insights into life in this small fishing village with its roughly 80 inhabitants. The volcanic island chain of the Aleutians stretches in a wide arc into the Pacific. Here, on Popof Island, you will visit the home of bison. Bald eagles, however, reign supreme in the skies. Their distinctive call over Unalaska Island invariably draws your gaze upward.

Sun, 05.07.2026 Cruising in Katmai National Park/Relaxation at sea

Mon, 06.07.2026 Kodiak

From 7.00 to 18.00 hrs

Tue, 07.07.2026 Homer

From 6.00 to 22.00 hrs

Wed, 08.07.2026 Cruising at Aialik Glacier

Thu, 09.07.2026 Seward/Alaska/USA

Arrival 6.00 hrs

Please note:

Itineraries are subject to change.

Wild Earth Travel

*Small Ships, Big Adventures*

0800 945 3327 (within New Zealand) | +64 (0) 3 365 1355 | 1800 107 715 (within Australia)

[info@wildearth-travel.com](mailto:info@wildearth-travel.com) | [wildearth-travel.com](http://wildearth-travel.com)



# Wild Earth Travel

*Small Ships, Big Adventures*

**wildearth-travel.com**

**info@wildearth-travel.com**

## YOUR SHIP: HANSEATIC INSPIRATION/NATURE/SPIRIT

|                            |                                  |
|----------------------------|----------------------------------|
| <b>YOUR SHIP:</b>          | <b>Hanseatic</b>                 |
|                            | <b>Inspiration/Nature/Spirit</b> |
| <b>VESSEL TYPE:</b>        | <b>Expedition</b>                |
| <b>LENGTH:</b>             | <b>138 m</b>                     |
| <b>PASSENGER CAPACITY:</b> | <b>230</b>                       |
| <b>BUILT/REFURBISHED:</b>  | <b>2021</b>                      |

The HANSEATIC inspiration, a small, state-of-the-art expedition ship with a maximum of 230 guests, offers a perfect blend of adventure and comfort for explorers seeking to uncover the world's wonders. As an international vessel conducting cruises in both English and German, it brings over 30 years of expertise from a market leader in German-speaking countries to every journey. Each expedition is a masterpiece, passionately crafted to reveal far-flung worlds--be it icy realms, tropical paradises, wildlife havens, or cultural gems--making every voyage a unique discovery aboard this exceptional ship.

Features of all cabins and suites

An ocean view with even more: exclusively outside cabins and suites, almost all with balconies or French balconies

Spaciously designed - enjoy a relaxing stay in rooms from 21 m<sup>2</sup>/226 ft<sup>2</sup> up to 71 m<sup>2</sup>/764 ft<sup>2</sup> in size

Exceptionally equipped - for example, with binoculars, Nordic Walking poles, air conditioning, coffee machine and mini bar (free of charge) and 24-hour cabin service

Separable beds

Rain shower and heated wall in bathroom (e.g. for towels and

wet parkas)

Extensive infotainment with live broadcast and recordings of expert presentations, forwardview camera, navigation chart, films and much more

Restaurants

Aboard the HANSEATIC inspiration, a new kind of freedom blends adventure and pleasure with a culinary journey across three exceptional restaurants. The spacious HANSEATIC Restaurant offers flexible mealtimes and a free choice of seating, serving a daily-changing menu of global flavors inspired by local specialties, paired with fine wines and supported by attentive 24-hour cabin service. At the Lido Restaurant, guests can savor breakfast under the open sky or enjoy a perfectly grilled steak from the outdoor barbecue, complete with panoramic views and an open show kitchen. The specialty restaurant Nikkei fuses fine Japanese creations with modern Peruvian cuisine, delivering a unique dining experience that elevates exploration to new heights--all while bars in the Observation Lounge and HanseAtrium offer favorite drinks against stunning backdrops, from Nordic fjords to icy Antarctic vistas.

Fitness and Wellness

On the HANSEATIC inspiration, an extraordinary time out awaits after thrilling Zodiac rides, challenging hikes, or Arctic adventures. Unwind in the Ocean Spa, where a Finnish sauna with stunning ocean views, a gentle steam sauna, an ice fountain, and a relaxation room rejuvenate your senses, complemented by professional massages, cosmetic treatments, and eco-friendly products made from natural, vegan ingredients.

Wild Earth Travel

*Small Ships, Big Adventures*

**0800 945 3327** (within New Zealand) | +64 (0) 3 365 1355 | **1800 107 715** (within Australia)

info@wildearth-travel.com | **wildearth-travel.com**





Stay active in the 100 m<sup>2</sup> fitness room or separate course room--both with ocean vistas--guided by a fitness coach offering personalized advice and a variety of courses, either indoors or on deck. The pool area, with its flexible canopy, invites relaxation year-round, featuring water loungers, a whirlpool, and a bar, ensuring a perfect blend of indulgence and revitalization against the backdrop of the open sea.

#### Knowledge

Shore excursions and Zodiac rides come alive with deeper context through fascinating presentations in the HanseAtrium, a high-tech lounge where experts share daily precaps and recaps, doubling as an atmospheric evening bar for films and discussions. The Ocean Academy enhances the journey with a Study Wall and interactive poster of scientific insights, microscopes for exploring hidden wonders alongside experts, and Study Seats--with swivel touchscreens--for personal dives into science. Supported by travel diaries and destination videos, this immersive experience broadens horizons with cutting-edge tools and expertise.



expertise.

# Wild Earth Travel

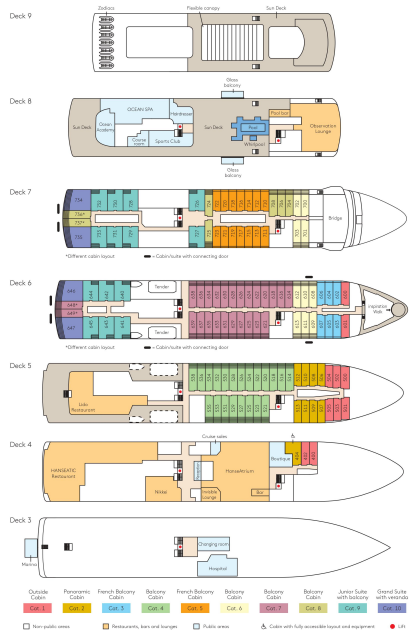
*Small Ships, Big Adventures*

[wildearth-travel.com](http://wildearth-travel.com)

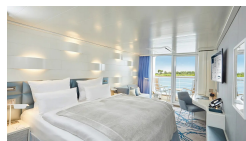
[info@wildearth-travel.com](mailto:info@wildearth-travel.com)

## INSIDE YOUR SHIP

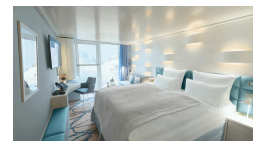
Deck plan HANSEATIC Inspiration



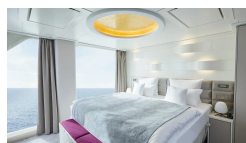
Balcony Cabin



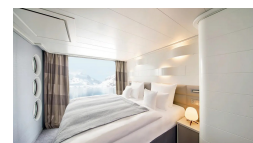
French Balcony Cabin



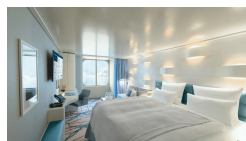
Grand Suite



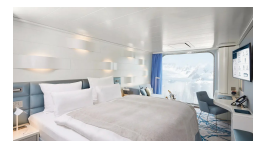
Junior Suite



Outside Cabin



Panoramic Cabin



Wild Earth Travel

*Small Ships, Big Adventures*

0800 945 3327 (within New Zealand) | +64 (0) 3 365 1355 | 1800 107 715 (within Australia)

[info@wildearth-travel.com](mailto:info@wildearth-travel.com) | [wildearth-travel.com](http://wildearth-travel.com)



# Wild Earth Travel

*Small Ships, Big Adventures*

**wildearth-travel.com**

**info@wildearth-travel.com**

## PRICING

**21-Jun-2026 to 10-Jul-2026**

|                             |                     |
|-----------------------------|---------------------|
| <b>Outside Cabin</b>        | <b>10849 EUR pp</b> |
| <b>Panoramic Cabin</b>      | <b>11427 EUR pp</b> |
| <b>French Balcony Cabin</b> | <b>11973 EUR pp</b> |
| <b>Balcony Cabin</b>        | <b>12734 EUR pp</b> |
| <b>Junior Suite</b>         | <b>16861 EUR pp</b> |
| <b>Grand Suite</b>          | <b>35970 EUR pp</b> |

**Wild Earth Travel**

*Small Ships, Big Adventures*

**0800 945 3327** (within New Zealand) | +64 (0) 3 365 1355 | **1800 107 715** (within Australia)

info@wildearth-travel.com | **wildearth-travel.com**